



## **Firmware update**

### **Firmware Version 1.0.89**

#### **AMBEO Soundbar Plus SB02M**

Sonova Consumer Hearing recommends to always install the latest firmware version to ensure the best performance of your product.

#### **We have implemented the following:**

- Added AMBEO Demo Experience content – MPEG-H trailer
- Improved HDMI stability for various TV models
- Improved Alexa built-in mic performance and response time
- Improved input logic and stability for the optical Input
- Improved general system stability
- Bugfix - Fixed distortion sound on eARC/ARC when starting audio for certain TV models
- New AMBEO Sub Firmware v46
  - Improved limiter behavior for wired connection
  - Bugfix – Fixed problem which has led to failing calibrations



# AMBEO Soundbar Plus firmware update

## Frequently asked questions

### Automatic firmware update (Soundbar connected to the Internet):

To update the firmware automatically (normally during early morning time), the Soundbar must be connected to the Internet via WiFi or Ethernet.

Download the Sennheiser Smart Control app to your smartphone and follow the instructions to connect your Soundbar to the WiFi. The Soundbar automatically installs the latest firmware update during the setup procedure.

If your AMBEO Soundbar is connected to the Sennheiser Smart Control app and if an update is available, you will be offered the update via the app. The current firmware release status is displayed under Device Settings in the app.

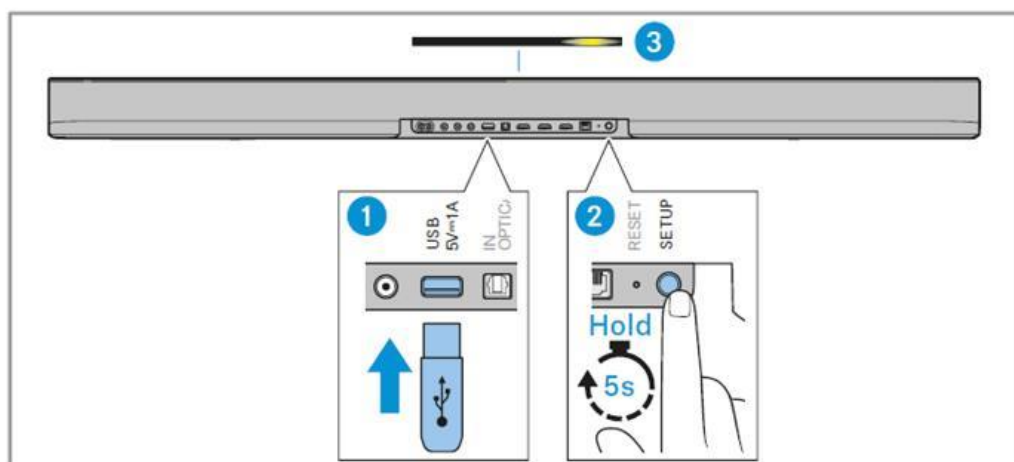
### How do I manually update the Soundbar if my Soundbar is not connected to the internet so that I can use the App?

Required USB flash drive:

- \* Memory size: minimum 1 GB recommended
- \* File system: FAT or NTFS

Download the update file with the file name "image.swu" from the product website [www.sennheiser-hearing.com/download](http://www.sennheiser-hearing.com/download) (search for "AMBEO Soundbar Plus") and save it on a USB flash drive.

- \* Do not change the file name!
- \* Turn on the Soundbar
- \* Connect the USB flash drive to the USB socket on the Soundbar.
- \* Press the SETUP button for 5 seconds.
- \* The update will install





# AMBEO Soundbar Plus firmware update

## History

### 1.0.73

- Increased speed of volume changes via HDMI CEC
- Increased max. volume for Dolby encoded content
- Fixes for Amazon Alexa built-in – Ensured smoother operation
- Improved compatibility on ARC and eARC interface
  - Bugfix for Multichannel PCM content on eARC
  - Bugfix for missing audio on ARC/eARC
  - Bugfix for failing automatic input change on certain connected devices
- New AMBEO Sub Firmware v42
  - Bugfix on Subwoofer calibration mechanism which might have led to boost on low frequencies
  - Improved limiter which solves drop outs on high volume levels
- Added “Phase 180°” Subwoofer function to invert phase of Subwoofer to adapt Bass performance in different room environments
- Auto-Start in Spotify source once input is selected via remote/app (Can be disabled via Spotify service settings in app)
- Additional minor bugfixes for app and system behavior

### v0.0.62

- Improved HDMI compatibility for eARC interface
- Optimized crossover frequency of external sub
- Optimized sound profile of external sub