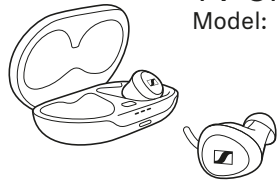




TV Clear Earbuds 2

Model: TVC2-EBC
TVC2-EB
TVC2-C



- EN Quick Guide
- DE Kurzanleitung
- FR Guide rapide
- ES Instrucciones resumidas
- PT Guia rápidos
- NL Beknopte handleiding
- IT Guida rapida
- DA Snabbguide
- SV Bruksanvisning

SENNHEISER

Instruction manuals and product support
 Bedienungsanleitungen und Produktbetreuung
 Manuels d'utilisation et assistance produit
 Instrucciones de uso y soporte del producto
 Manuali d'istruzioni e supporto prodotto
 Bedieningsinstructies en productondersteuning
 Manuais de instruções e assistência ao produto
 Instrukcje obsługi i wsparcie produktowe
 Bruksanvisninger og produkthjælp

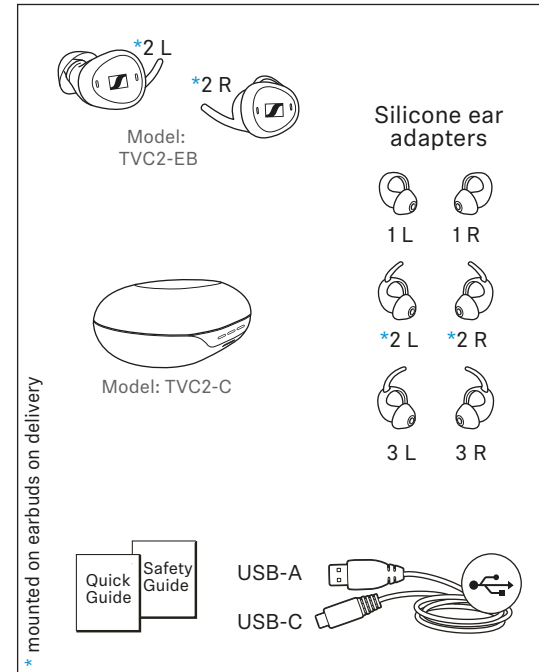
www.sennheiser-hearing.com/tvclearearbuds2



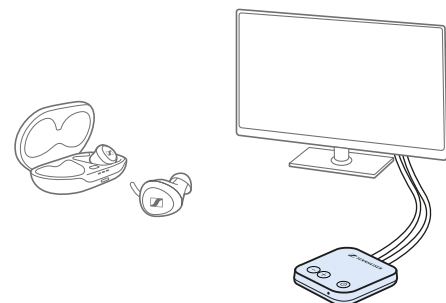
Sonova Consumer Hearing GmbH
 Am Labor 1, 30900 Wedemark, Germany

029-1283-72/V1.0/2023 01

Package contents | Inhalt | Contenu | Índice |
 índice | Inhoud | Contenuto | Indhold | Innehåll



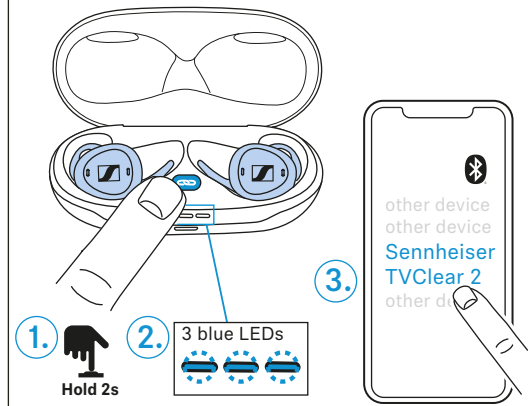
Best TV results | Beste TV-Ergebnisse |
 Meilleurs résultats télévisuels | Los mejores resultados de TV |
 Melhores resultados de TV | Beste TV-resultaten | I migliori risultati TV |
 Bedste tv-resultater | Optimala TV-resultat



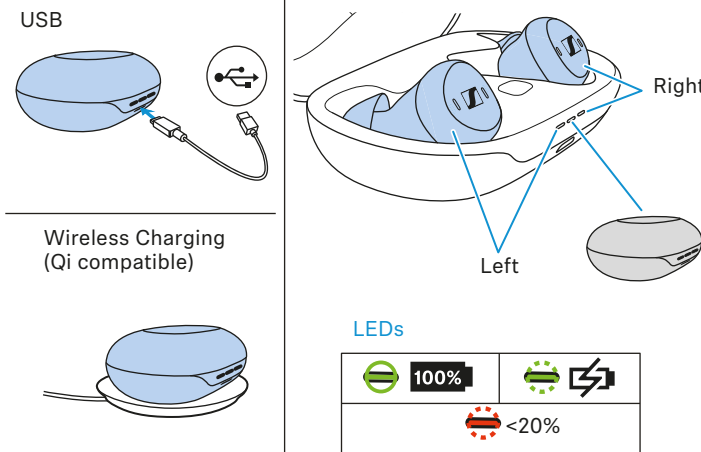
TV Clear Transmitter 2

www.sennheiser-hearing.com/tvcleartransmitter2

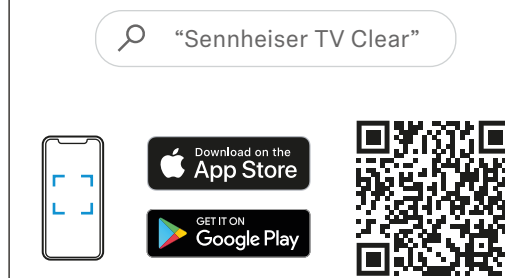
1 Pairing | Koppeln | Appairer | Sincronizar |
 Emparelhar | Koppelen | Accoppiare |
 Parring | Parkoppla



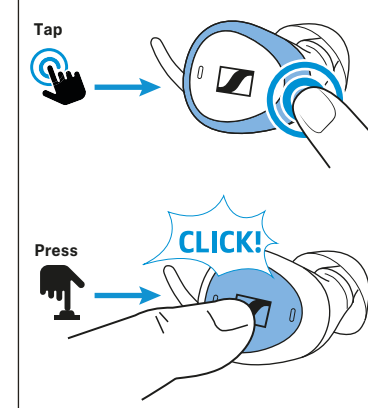
4 Charging the earbuds and the charging case | Ohrhörer und
 Ladebox laden | Charger les écouteurs et le boîtier de charge-
 ment | Cargar auriculares y caja de carga | Carregar os auriculares
 e a caixa de carregamento | Oortelefoon en laadbox laden | Carica-
 re le microcuffie e la stazione di carica | Opladning af øretelefoner
 og ladeboks | Ladda hörlurar och laddare



2 Installing the app | App installieren | Installer
 l'appli | Instalar aplicación | Instalar a
 aplicação | App installeren | Installare l'app |
 Installation af app | Installera app

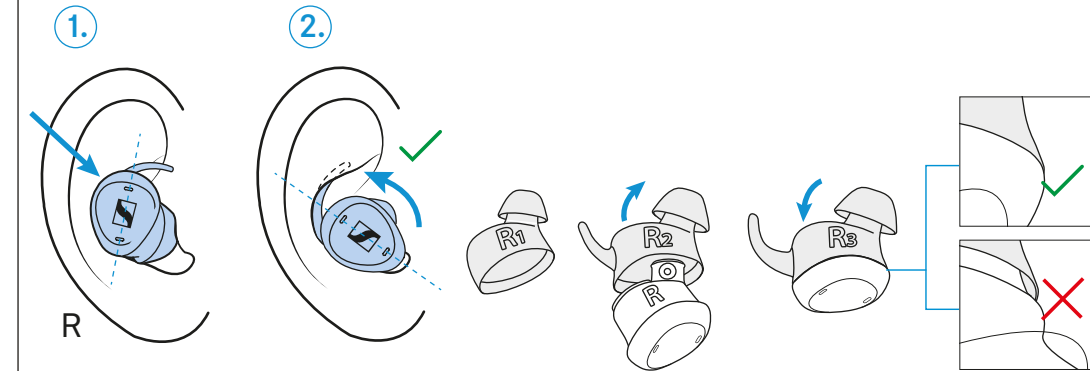


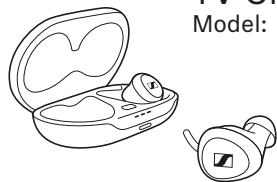
5 Operation | Bedienung | Utilisation | Manejo | Operação | Bediening | Utilizzo | Betjening | Användning



| Volume | | TV+ Speech Clarity | | Pause | Ambient Awareness | ringing |
|----------------|----------------|-------------------------------|-------------------------------|--------|-------------------|----------------|
| Left | Right | Left | Right | Left | Right | Left or Right |
| | | | | | | |
| Short Press 1x | Short Press 1x | Hold 2s | Hold 2s | Tap 2x | Tap 2x | Short Press 1x |
| - | + | 5 max 4 3 2 1 off | 5 max 4 3 2 1 off | ▶ | ON OFF | |
| | | | | | | |

3 Inserting the earbuds or selecting the ear adapters | Einsetzen oder Ohradapter wählen |
 Insérer les écouteurs ou sélectionner les embouts d'oreille | Insertar o seleccionar
 adaptadores para los oídos | Colocar ou selecionar os adaptadores auriculares | Plaatsen of
 ooradapter selecteren | Inserire o scegliere i cuscinetti auricolari | Isætning eller valg af øreadapter |
 Sätta in eller välja öronadapter





TV Clear Earbuds 2

Model: TVC2-EBC
TVC2-EB
TVC2-C

- FI Pikaohje
- EL Συνοπτικές οδηγίες
- PL Krótka instrukcja obsługi
- TR Hızlı Kılavuz
- RU Краткая инструкция
- JA 簡易説明書
- ZH-HANS 快速指南
- ZH-HANT 快速使用指南
- KO 빠른 안내서
- ID Panduan Ringkas

SENNHEISER

Käyttöohjeet ja tuoteneuvonta
Οδηγίες λειτουργίας και υποστήριξη προϊόντος
Instrukcje obsługi i pomoc produktowa
Kullanım kılavuzu ve ürün desteği
Инструкции по эксплуатации и поддержка продукта
取扱説明書と製品サポート
操作说明与产品支持
操作說明與產品支援
사용 설명서 및 제품 지원
Petunjuk penggunaan dan dukungan produk

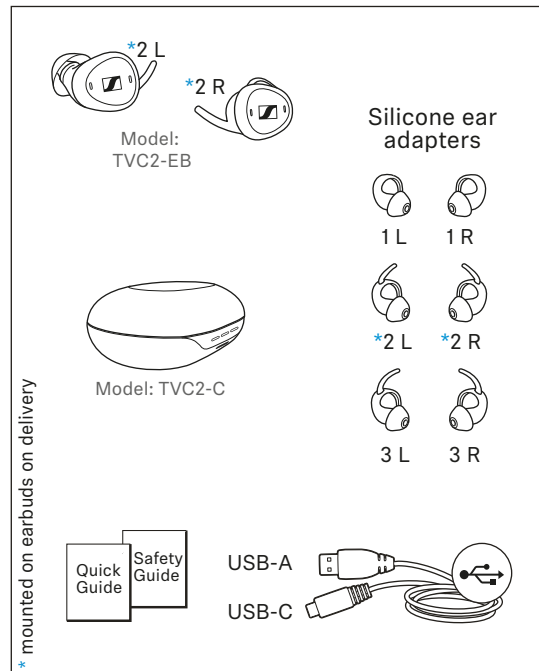
www.sennheiser-hearing.com/tvcleararbuds2



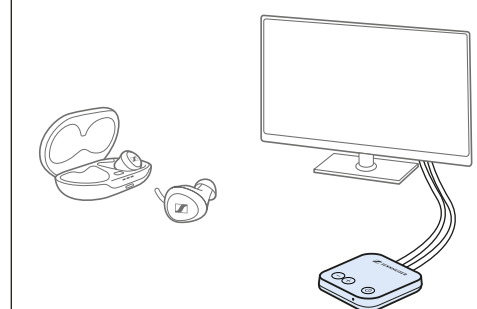
Sonova Consumer Hearing GmbH
Am Labor 1, 30900 Wedemark, Germany

029-1283-72/V1.0/2023 01

Sisältö | Περιεχόμενα | Zawartość | İçindekiler |
Оглавление | 目次 | 目录 | 目錄 | 구성품 |
Daftar Isi



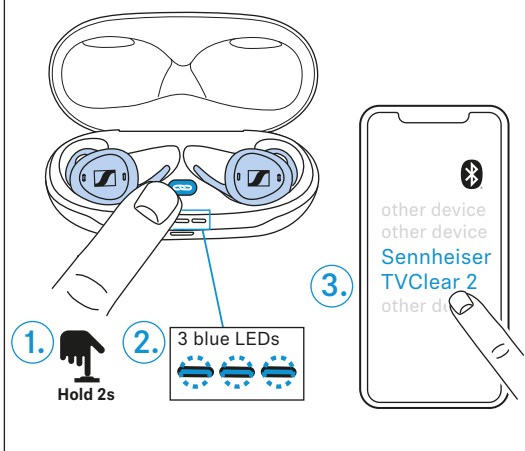
Parhaat TV-tulokset | Βέλτιστα αποτελέσματα
στην τηλεόραση | Najlepsze efekty w przypadku
połączenia z TV | En iyi TV sonuçları | Лучшее
качество ТВ | 最佳电视效果 | 最佳電視效果 |
最佳電視效果 | 최상의 TV 결과 | Hasil TV terbaik



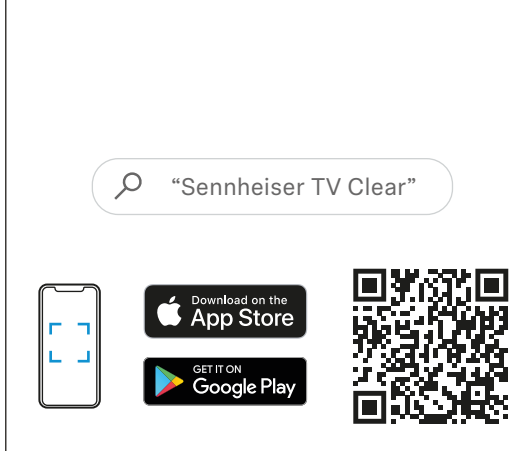
TV Clear Transmitter 2

www.sennheiser-hearing.com/tvcleartransmitter2

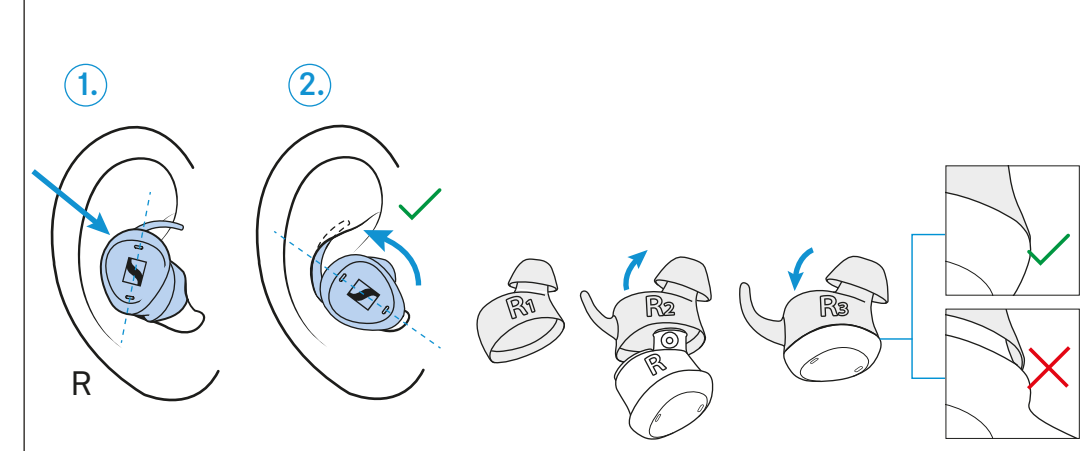
1 Pariliitoksen muodostaminen | Σύζευξη |
Parowanie | Eşleştirme | Сопряжение |
ペアリング | 配对 | 配對 | 페어링하기 |
Menyandingkan



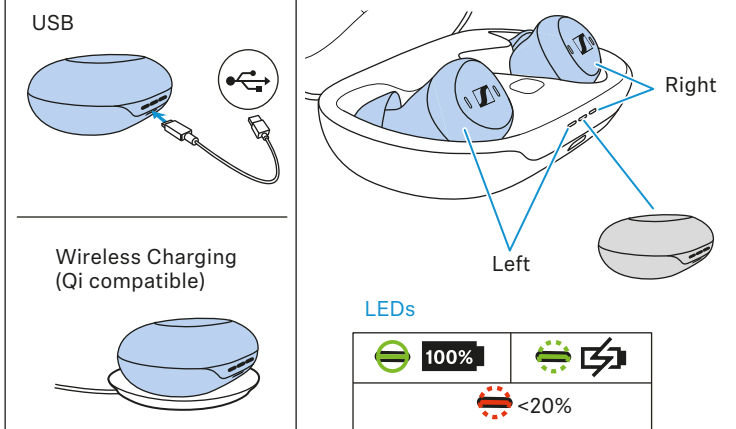
2 Sovelluksen asennus | Εγκατάσταση
εφαρμογής | Instalacja aplikacji |
Uygulamanın kurulması | Установка
приложения | アプリをインストール |
安装应用程序 | 安裝應用程式 | 앱설치하기 |
Menginstal aplikasi



3 Korvaan asettaminen tai korva-adapterin valitseminen | Τοποθέτηση ή επιλογή
μαξιλαριών αυτιού | Włożenie do ucha lub wybranie wkładek dousznych | Kulaklık
adaptörü takın veya seçin | Надевание или выбор переходника наушников | セットす
るイヤードアプターを選択します | 插入或选择耳塞套 | 插入或選擇耳塞 | 귀에 이어폰 삽입
또는 이어어댑터선택하기 | Masukkan atau pilih adaptor telinga



4 Nappikuulokkeiden ja latausrasian lataaminen |
Φόρτιση ακουστικών και θήκης φόρτισης | Ładowanie
słuchawek i ładowarki | Kulaklıkları ve şarj kutusunu şarj edin |
Зарядка наушников и бокса для зарядки |
イヤフォンと充電ボックスを充電する | 耳机和充电盒充电 | 耳機和充
電盒充電 | 이어폰과 충전 상자 충전하기 | Isi daya earphone dan
kotak pengisi daya



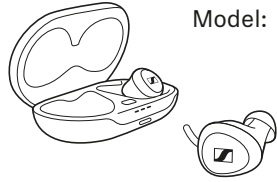
5 Käyttö | Χειρισμός | Obsługa | Kullanım | Управление | 操作 | 操作 | 操作 | 조작 | Kontrol

| Volume | | TV+ Speech Clarity | | Pause | Ambient Awareness | ringing |
|------------------|----------------|-------------------------------|-------------------------------|--------|-------------------|----------------|
| Left | Right | Left | Right | Left | Right | Left or Right |
| Short Press 1x | Short Press 1x | Hold 2s | Hold 2s | Tap 2x | Tap 2x | Short Press 1x |
| - | + | 5 max 4 3 2 1 off | 5 max 4 3 2 1 off | ▶ | ON OFF | 📞 |
| ⚙️ TV Clear App | | | | | | |



TV Clear Earbuds 2

Model: TVC2-EBC
TVC2-EB
TVC2-C



- ET Lühijuhend
- LV Īsā instrukcija
- LT Trumpoji naudojimo instrukcija
- CS Stručný návod k použití
- SK Stručný návod
- HU Rövid útmutató
- RO Instrucțiuni succinte
- BG Кратко ръководство
- SL Kratka navodila
- HR Kratke upute

SENNHEISER

Návod k obsluze a produktová podpora
Lietošanas instrukcijas un produktu atbalsts
Naudojimo instrukcija ir gamin palaikymas
Návod k obsluze a produktová podpora
Návody na obsluhu a starostlivosť o výrobok
Kezelési útmutatók és termékondozás

Instrucțiuni de utilizare și asistență privind produsul
Ръководства за експлоатация и поддръжка на продукта
Navodila za uporabo in podpora glede izdelkov
Upute za upotrebu i podrška za proizvode

www.sennheiser-hearing.com/tvcleararbuds2



Sonova Consumer Hearing GmbH
Am Labor 1, 30900 Wedemark, Germany

029-1283-72/V1.0/2023 01

Sisukord | Saturs | Turinys | Obsah | Obsah |
A csomag tartalma | Cuprins | Съдържание |
Vsebina | Sadržaj

Model: TVC2-EB

*2 L *2 R

Silicone ear adapters

1 L 1 R

*2 L *2 R

3 L 3 R

Model: TVC2-C

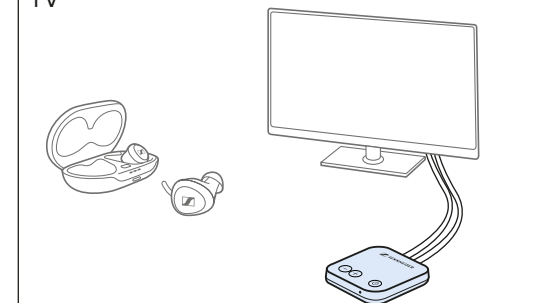
Quick Guide Safety Guide

USB-A

USB-C

* mounted on earbuds on delivery

Parimad TV-tulemused | Labākie TV rezultāti |
Geriausi TV rezultatai | Nejlepší výsledky TV |
Najlepšie TV výsledky | A legjobb TV-s eredmények |
Cele mai bune rezultate TV | Най-добри
резултати от телевизор | Najboljši rezultati
TV



TV Clear Transmitter 2

www.sennheiser-hearing.com/tvcleartransmitter2

1 Sidumine | Savienojuma izveide |
Susiejimas | Párování | Spárovanie |
Párosítás | Cuplarea | Сдвояване |
Seznanjanje | Uparivanje

1 Hold 2s

2 3 blue LEDs

3 other device
other device
Sennheiser
TVClear 2
other device

2 Rakenduse installimine | Lietotnes
instalēšana | Programēlēs ģdiegimas |
Instalace aplikace | Instalovať aplikáciu | App
telepitése | Instalarea aplicației |
Инсталиране на приложение | Namestitev
aplikacije | Instalirajte aplikaciju

“Sennheiser TV Clear”

Download on the App Store

GET IT ON Google Play

3 Kasutamine või kõrvaadapteri valimine | Ilevietošana vai austiņu adaptera izvēle | Įstatymas
arba ausinių adapterių parinkimas | Nasazení nebo výběr ušní vložky | Vloženie alebo výber
ušného nadstavca | Behelyezés vagy füladapter kiválasztása | Montarea sau selectarea
adaptoarelor pentru urechi | Поставете или изберете адаптер за ухо | Vstavljanje ali izbor
ušnega adapterja | Umetnite ili odaberite ušni adapter

1.

2.

R

R1 R2 R3

4 Kõrvaklappide ja laadimiskarbi laadimine | Austiņu un
uzlādes futlāra uzlāde | Ausinių ir įkrovimo dėžutės įkrovimas |
Nabíjení sluchátek a nabíjecího pouzdra | Nabít slúchadlá a
nabíjací box | Fülhallgató és töltődoboz töltése | Încărcarea căștilor
auriculare și a casetei de încărcare | Зарядете слушалките и
кутията за зареждане | Polnjenje slušalk in etuija za polnjenje |
Napunite slušalice i kutiju za slušalice

USB

Right

Left

LEDs

100%

<20%

5 Kasutamine | Lietošana | Valdymas | Ovládání | Obsluha | Kezelés | Operarea | Управление | Upravljanje | Rukovanje

Tap

Press

CLICK!

| Volume | | TV+ Speech Clarity | | Pause | Ambient Awareness | ringing |
|-------------------|----------------|-------------------------------|-------------------------------|--------|-------------------|----------------|
| Left | Right | Left | Right | Left | Right | Left or Right |
| Short Press 1x | Short Press 1x | Hold 2s | Hold 2s | Tap 2x | Tap 2x | Short Press 1x |
| - | + | 5 max 4 3 2 1 off | 5 max 4 3 2 1 off | ▶ | ON OFF | 📞 |
| ⚙️ 📱 TV Clear App | | | | | | |