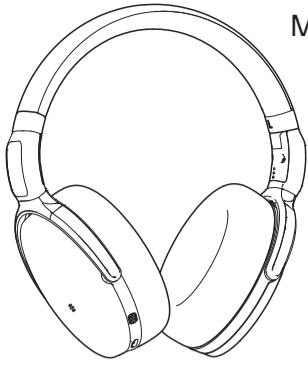




HD 450SE

Model: SEBT4



- EN Quick Guide
- DE Kurzanleitung
- FR Guide rapide
- ES Instrucciones resumidas
- PT Guia rápidos
- NL Beknopte handleiding
- IT Guida rapida
- DA Snabbguide
- SV Bruksanvisning

SENNHEISER

Instruction manuals and product support
 Bedienungsanleitungen und Produktbetreuung
 Manuels d'utilisation et assistance produit
 Instrucciones de manejo y soporte técnico de productos
 Manuais de instruções e assistência ao produto
 Gebruiksaanwijzingen en product-support
 Istruzioni per l'uso e assistenza sul prodotto
 Betjeningsvejledninger og produktrådgivning
 Bruksanvisningar och produktsupport

www.sennheiser.com
www.sennheiser.com/download

Smart Control
www.sennheiser.com/smartcontrol



Sennheiser is a trademark of Sennheiser electronic GmbH & Co. KG, registered in the U.S. and other countries. Use of the Made for Apple badge means that an accessory has been designed to connect specifically to the Apple product(s) identified in the badge, and has been certified by the developer to meet Apple performance standards. Apple is not responsible for the operation of this device or its compliance with safety and regulatory standards. Apple, iPad, iPhone, the Apple logo and Siri are trademarks of Apple Inc., registered in the U.S. and other countries. App Store is a service mark of Apple Inc. The trademark "iPhone" is used in Japan with a license from iPhone K.K. Android and Google play are registered trademarks of Google Inc. The Bluetooth® word mark and logos are registered trademarks owned by Bluetooth SIG, Inc. and any use of such marks by Sennheiser electronic GmbH & Co. KG is under license. Amazon, Alexa and all related logos are trademarks of Amazon.com, Inc. or its affiliates. Other company and product names mentioned herein are trademarks of their respective owners.

Sennheiser electronic GmbH & Co. KG
 Am Labor 1, 30900 Wedemark, Germany
www.sennheiser.com Publ. 07/21, 591128/A02

Use the app to configure the headphones and additional functions. | Verwenden Sie die App für die Einrichtung und weitere Funktionen des Hörers. | Utilisez l'application pour configurer le casque et les fonctions supplémentaires. | Utilice la aplicación para la configuración y para otras funciones de los auriculares. | Utilize a aplicação para configurar os auscultadores e usufruir de outras funções. | Gebruik de app voor het instellen van de hoofdtelefoon en al zijn functies. | Utilizzare l'app per la configurazione e per altre funzioni della cuffia. | Benyt appen forbindelse med indstilling og andre funktioner for øretelefonerne. | Använd appen för installationen och för övriga hörlursfunktioner.

Smart Control

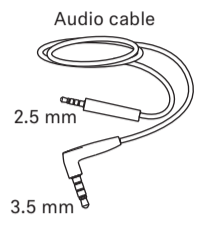
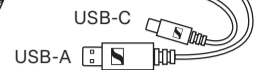
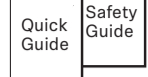
▷ Download the free Sennheiser Smart Control app.



- ▷ Download the free Amazon Alexa app.
- ▷ Pair the HD 450SE via Bluetooth with your smartphone.
- ▷ Open the app and add the "HD 450SE" to "Devices".
- ▷ Smart Control app: activate "Alexa" in the headphone settings.

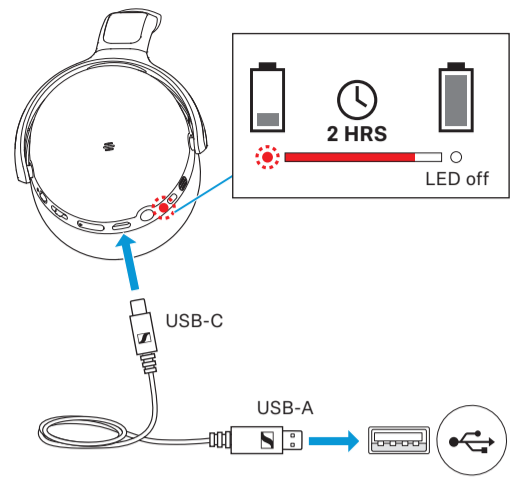


Package includes | Lieferumfang | Contenu de la livraison | Contenido del paquete | O pacote inclui | Inhoud van de verpakking | Contenuto della confezione | Pakken indeholder | Paketinnehåller



www.sennheiser.com/download
 Detailed instruction manual

Charging the headphones | Kopfhörer laden | Chargement du casque | Cargar los auriculares | Carregar os auscultadores | De hoofdtelefoon opladen | Carica delle cuffie | Opladning af hovedtelefoner | Ladda dina hörlurar



Instruction manuals and product support
 Bedienungsanleitungen und Produktbetreuung
 Manuels d'utilisation et assistance produit
 Instrucciones de manejo y soporte técnico de productos
 Manuais de instruções e assistência ao produto
 Gebruiksaanwijzingen en product-support
 Istruzioni per l'uso e assistenza sul prodotto
 Betjeningsvejledninger og produktrådgivning
 Bruksanvisningar och produktsupport

www.sennheiser.com
www.sennheiser.com/download

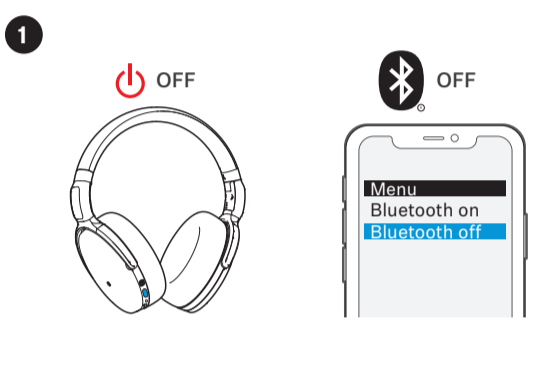
Smart Control
www.sennheiser.com/smartcontrol



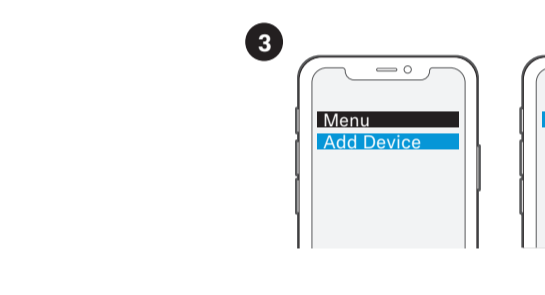
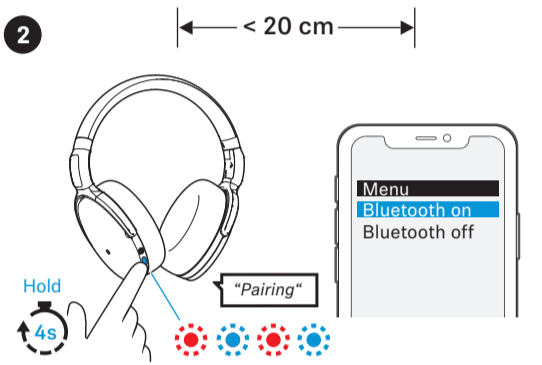
Sennheiser is a trademark of Sennheiser electronic GmbH & Co. KG, registered in the U.S. and other countries. Use of the Made for Apple badge means that an accessory has been designed to connect specifically to the Apple product(s) identified in the badge, and has been certified by the developer to meet Apple performance standards. Apple is not responsible for the operation of this device or its compliance with safety and regulatory standards. Apple, iPad, iPhone, the Apple logo and Siri are trademarks of Apple Inc., registered in the U.S. and other countries. App Store is a service mark of Apple Inc. The trademark "iPhone" is used in Japan with a license from iPhone K.K. Android and Google play are registered trademarks of Google Inc. The Bluetooth® word mark and logos are registered trademarks owned by Bluetooth SIG, Inc. and any use of such marks by Sennheiser electronic GmbH & Co. KG is under license. Amazon, Alexa and all related logos are trademarks of Amazon.com, Inc. or its affiliates. Other company and product names mentioned herein are trademarks of their respective owners.

Sennheiser electronic GmbH & Co. KG
 Am Labor 1, 30900 Wedemark, Germany
www.sennheiser.com Publ. 07/21, 591128/A02

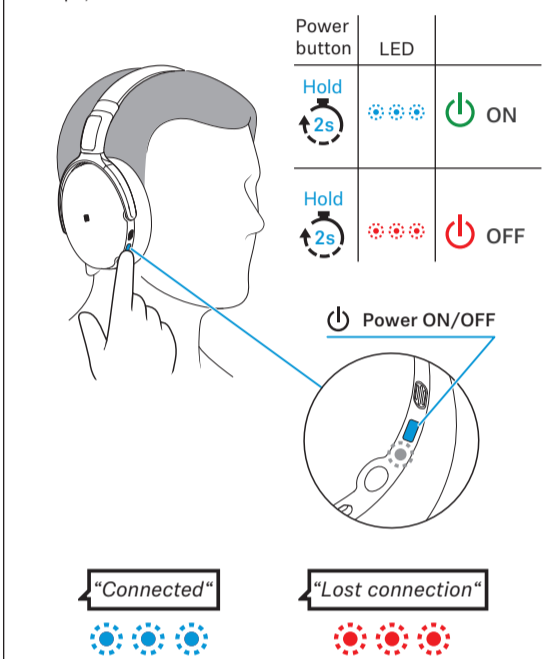
Pairing and connecting to a Bluetooth device | Mit einem Bluetooth-Gerät koppeln (Pairing) und verbinden | Appairer et connecter le casque à un appareil compatible Bluetooth | Sincronizar y conectar con un dispositivo Bluetooth |



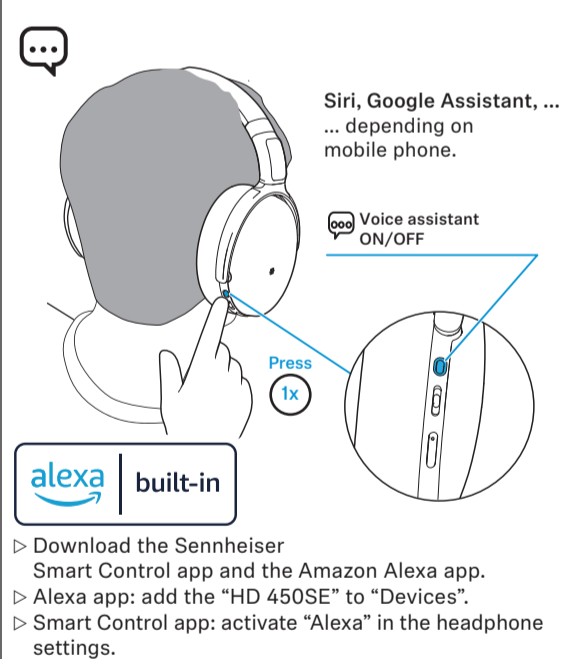
Emparelhar e ligar a um dispositivo Bluetooth | Met een Bluetoothapparaat pairen en verbinden | Abbinamento e collegamento a un dispositivo Bluetooth | Parring og tilslutning til en Bluetooth-enhed | Anslut till en Bluetooth-enhet



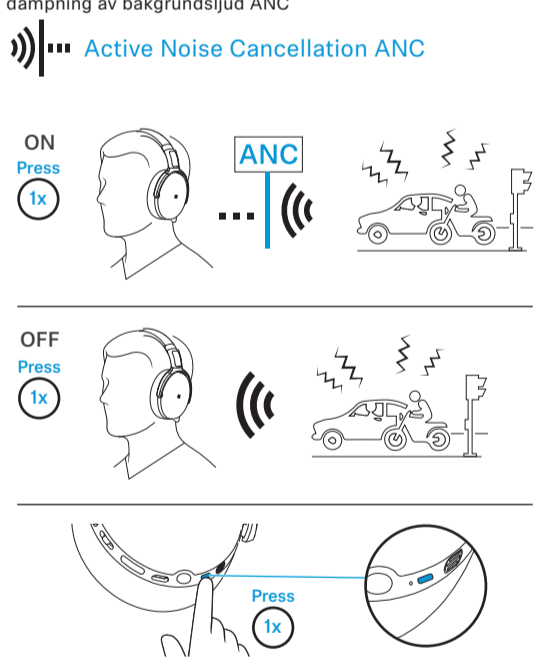
Switching the headphones on/off | Kopfhörer ein-/ausschalten | Allumer/éteindre le casque | Encender/apagar los auriculares | Li-gar/desligar os auscultadores | De hoofdtelefoon in-/uitschakelen | Accensione/spengimento delle cuffie | Sådan tændes og slukkes hovedtelefonerne | Hörlurar slås på/av



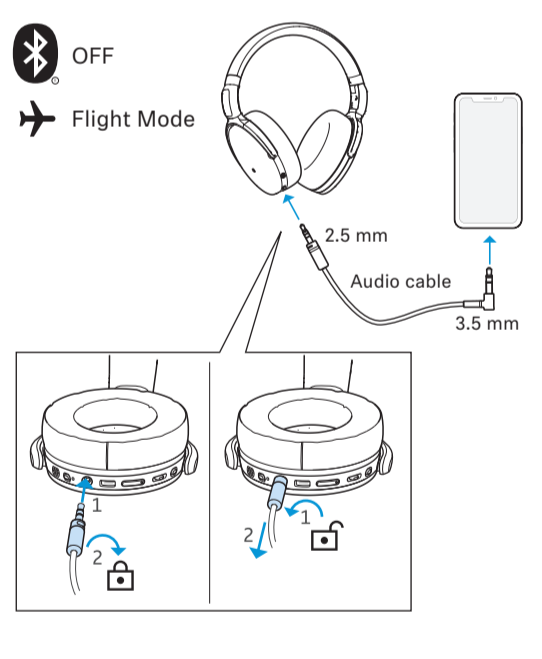
Activating/deactivating the voice assistant | Sprachassistent aktivieren/deaktivieren | Activer/désactiver l'assistant vocal | Activar/desactivar el asistente personal | Ativar/desativar assistente de voz | Spraakassistent activeren/deactiveren | Attivare/disattivare l'assistente vocale | Aktivierung/deaktivierung af taleassistenten | Aktivera/avaktivera talassistent



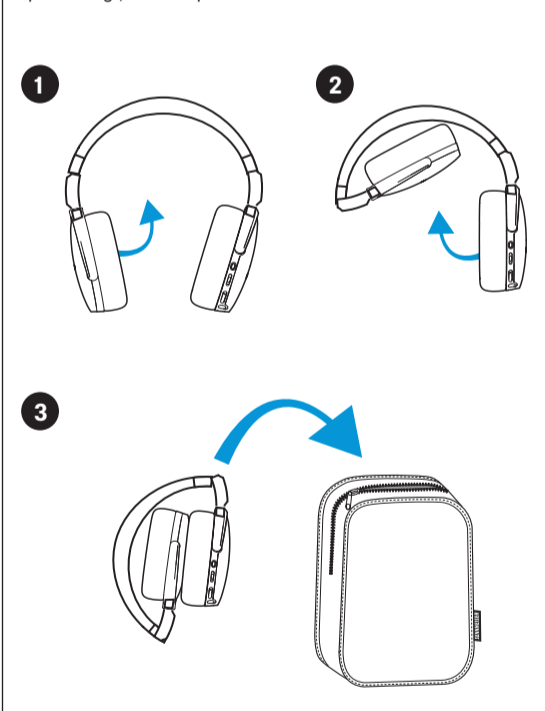
Using the active noise cancellation ANC | Aktive Geräuschunterdrückung ANC verwenden | Utiliser la réduction active de bruit ANC | Utilizar la atenuación activa del ruido ANC | Utilizar o controlo ativo de ruído ANC | Actieve ruisonderdrukking ANC toepassen | Utilizzare la soppressione attiva dei rumori ANC | Anvendelse af støjundertrykkelse ANC | Använda aktiv dämpning av bakgrunds ljud ANC



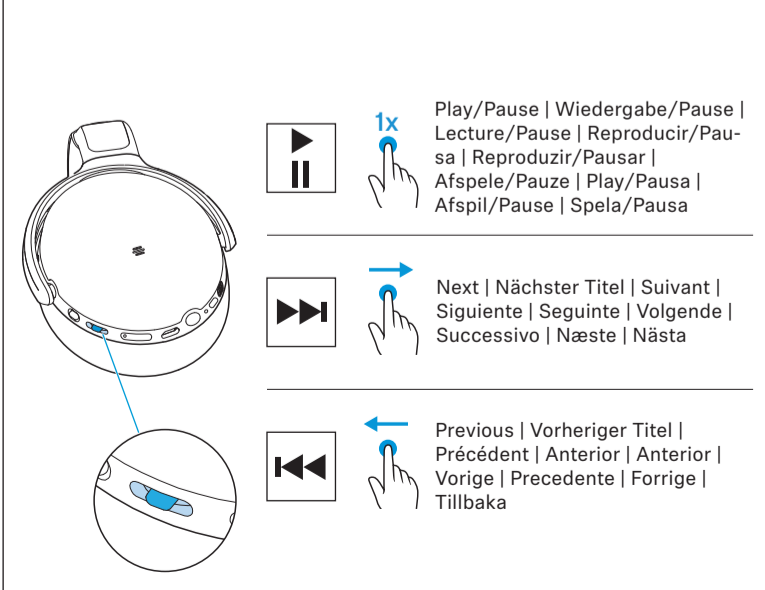
Using the audio cable (flight mode) | Audiokabel benutzen (Flugmodus) | Utilisation du câble audio (mode Avion) | Usar el cable de audio (modo de avión) | Utilizzo del cavo audio (modalità aereo) | De audiokabel gebruiken (vliegtuigmodus) | Utilizar o cabo áudio (modo de voo) | Używanie przewodu audio (tryb samolotowy) | Sådan bruges lydskabel (flymodus)



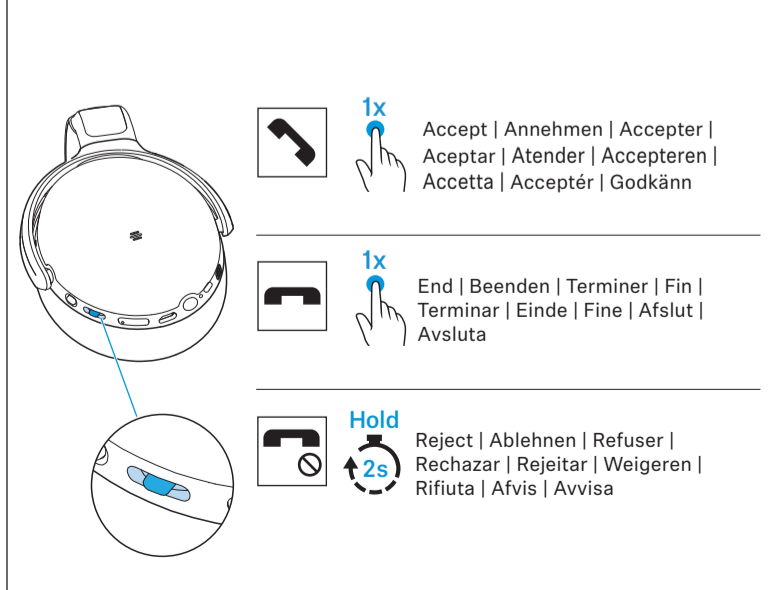
Folding and storing | Falten und aufbewahren | Plier et stocker | Plegar y conservar | Dobrar e guardar | Vouwen en opbergen | Piegare e conservare | Foldning og opbevaring | Vika ihop och förvara



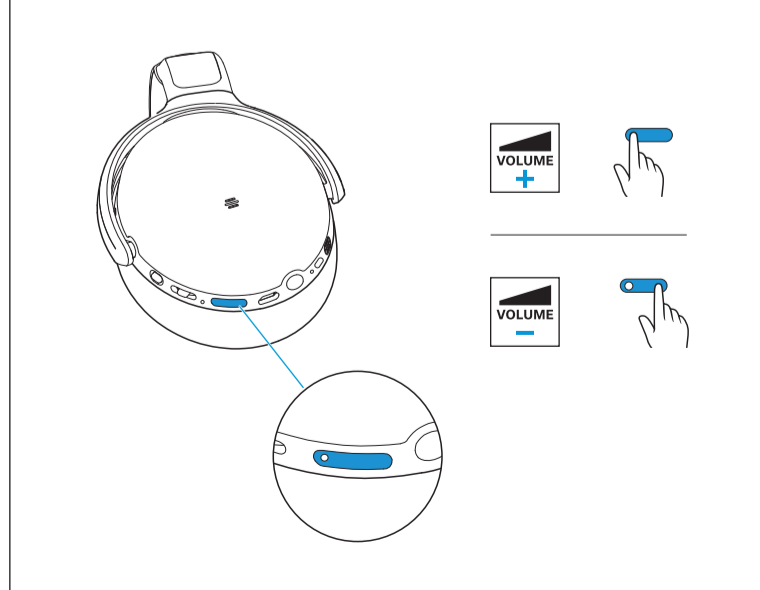
*Music functions | Musikfunktionen | Fonctions musicales | Funciones de música | Funções de música | Muziek-functies | Funzioni musicali | Musikfunktioner | Musik-funktioner



*Call functions | Anruffunktionen | Fonctions d'appel | Funciones de llamada | Funções de chamadas | Telefoon-functies | Funzioni di chiamata | Opkalds-funktioner | Ring-funktioner



VOLUME Adjusting the volume | Lautstärke einstellen | Régler le volume | Ajustar el volumen | Ajustar o volume | Volume instellen | Impostazione del volume | Indstilling af lydstyrke | Ställ in volymen

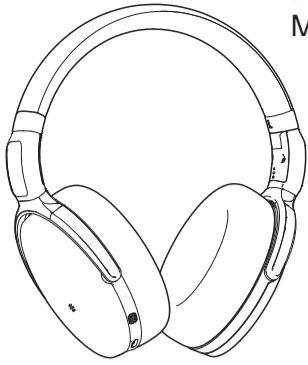


*Refer to the user manual for the complete functions list. | Die vollständige Liste der Funktionen finden Sie in der Bedienungsanleitung. | Reportez-vous au manuel utilisateur pour obtenir la liste complète des fonctions. | Consulte el manual del usuario para la lista completa de funciones. | Per l'elenco completo delle funzioni, consultare il manuale utente. | Raadpleeg de gebruiksaanwijzing voor de complete lijst met functies. | Consulte o manual do utilizador para obter a lista completa de funções. | Kompletna lista funkcji – patrz instrukcja obsługi. | Se brugervejledningen for en liste over alle funktioner. www.sennheiser.com/download



HD 450SE

Model: SEBT4



- FI Pikaohje
- EL Συνοπτικές οδηγίες
- PL Krótka instrukcja obsługi
- TR Hızlı Kılavuz
- RU Краткая инструкция
- JA 簡易説明書
- ZH 快速指南
- TW 快速使用指南
- KO 빠른 안내서
- ID Panduan Ringkas

SENNHEISER

Käytätävällistä kuulokkeiden käyttöönnottoa ja muita toimintoja varten. | Χρησιμοποιήστε την εφαρμογή για τη ρύθμιση και τις πρόσθετες λειτουργίες των ακουστικών. | Aplikację można wykorzystać do konfiguracji i ustawień dalszych funkcji słuchawek. | Uygulamayı kulaklığın kurulumu ve diğer işlevleri için kullanınız. | Используйте приложение для настройки и доступа к другим функциям наушников. | アプリを使用し、イヤホンのさらなる機能を設定してください。 | 請透過應用程式設置耳機或使用耳機的其他功能。 | 請透過應用程式設定耳機或使用耳機的其他功能。 | 헤드셋의 또 다른 기능 설정을 실행하려면 앱을 사용하십시오. | Gunakan aplikasi untuk peralatan dan fungsi lain earphone.

Smart Control

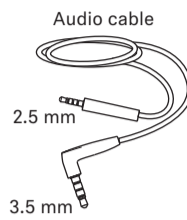
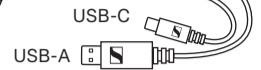
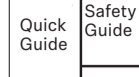
▷ Download the free Sennheiser Smart Control app.



▷ Download the free Amazon Alexa app.
▷ Pair the HD 450SE via Bluetooth with your smartphone.
▷ Open the app and add the "HD 450SE" to "Devices".
▷ Smart Control app: activate "Alexa" in the headphone settings.

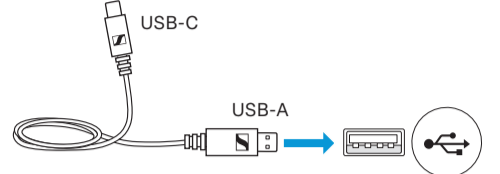
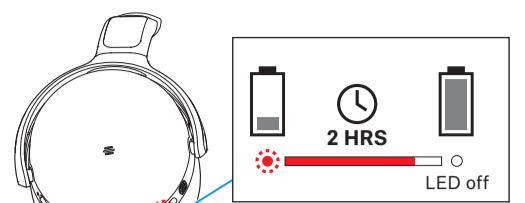


Pakkauksisältö | Περιεχόμενα πακέτου | Zestaw obejmuje | Ambalaj içeriği | Комплект поставки | パッケージに同梱されている品目 | 套裝包括 | 包裝內容 | 포장 내용물 | Paket termasuk



www.sennheiser.com/download
Detailed instruction manual

Kuulokkeiden lataaminen | Φόρτιση των ακουστικών | Ładowanie słuchawek | Kulaklık setini şarj etme | Зарядка аккумулятора наушников | ヘッドフォンを充電する | 給耳机充电 | 為耳机充电 | 헤드폰 충전하기 | Mengisi baterai headphone



Käyttöohjeet ja tuoteneuvonta
Οδηγίες λειτουργίας και υποστήριξη προϊόντος
Instrukcje obsługi i pomoc produktowa
Kullanım kılavuzu ve ürün desteği
Инструкции по эксплуатации и поддержка продукта
取扱説明書と製品サポート
操作説明と产品支持
操作說明與產品支援
사용 설명서 및 제품 지원
Petunjuk penggunaan dan dukungan produk

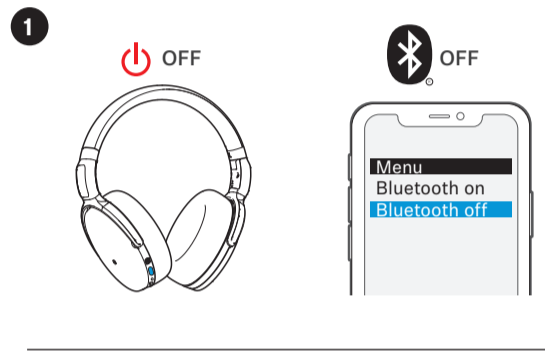
www.sennheiser.com
www.sennheiser.com/download
Smart Control
www.sennheiser.com/smartcontrol



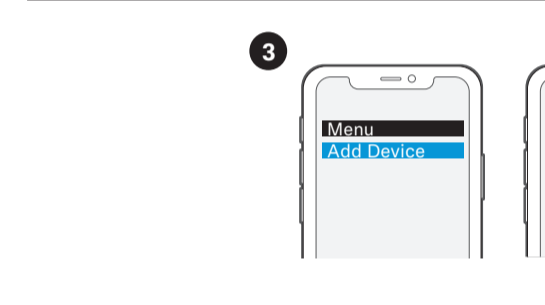
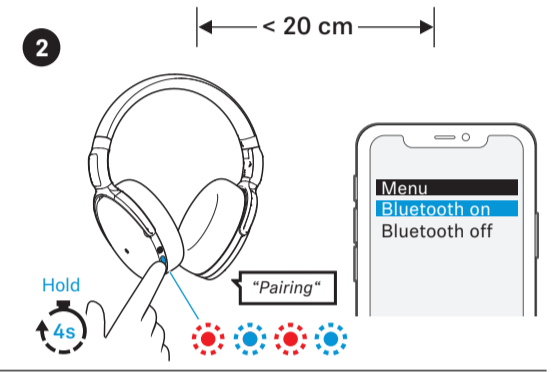
Sennheiser is a trademark of Sennheiser electronic GmbH & Co. KG, registered in the U.S. and other countries. Use of the Made for Apple badge means that an accessory has been designed to connect specifically to the Apple product(s) identified in the badge, and has been certified by the developer to meet Apple performance standards. Apple is not responsible for the operation of this device or its compliance with safety and regulatory standards. Apple, iPad, iPhone, the Apple logo and Siri are trademarks of Apple Inc., registered in the U.S. and other countries. App Store is a service mark of Apple Inc. The trademark "iPhone" is used in Japan with a license from iPhone K.K. Android and Google play are registered trademarks of Google Inc. The Bluetooth word mark and logos are registered trademarks owned by Bluetooth SIG, Inc. and any use of such marks by Sennheiser electronic GmbH & Co. KG is under license. Amazon, Alexa and all related logos are trademarks of Amazon.com, Inc. or its affiliates. Other company and product names mentioned herein are trademarks of their respective owners.

Sennheiser electronic GmbH & Co. KG
Am Labor 1, 30900 Wedemark, Germany
www.sennheiser.com Publ. 07/21, 591128/A02

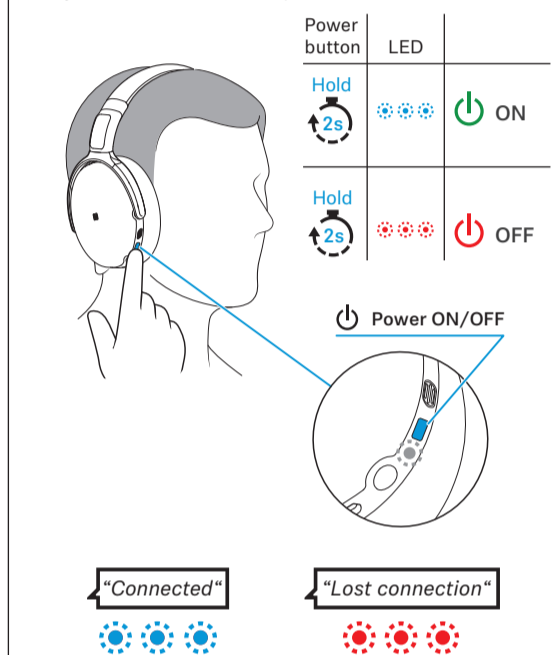
Pariliitoksen ja yhteyden muodostaminen kuulokkeiden ja Bluetooth-laitteen välillä | Ζεύξη και σύνδεση των ακουστικών με μια συσκευή Bluetooth | Sprzężenie i łączenie słuchawek z urządzeniem Bluetooth. | Kulaklığı Bluetooth cihazıyla eşleştir ve bağla | Сопряжение наушников с устройством с поддержкой Bluetooth и установка соединения



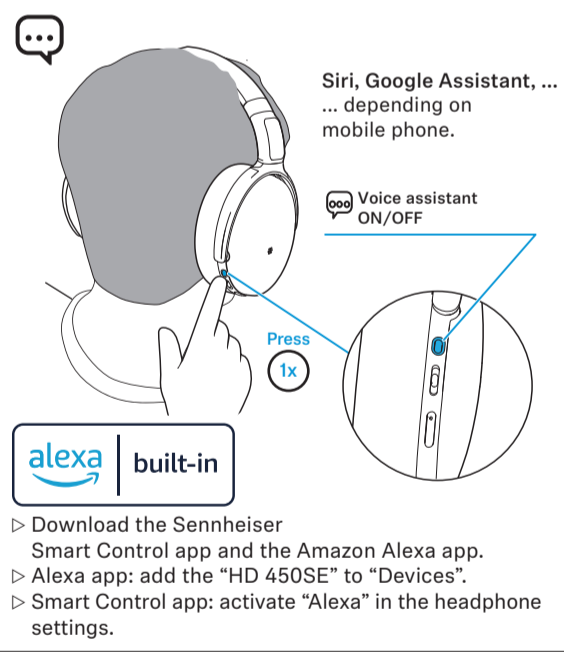
| ヘッドフォンをBluetooth機器とペアリングし接続する | 将耳机与蓝牙设备配对并连接 | 將耳機與藍牙設備配對並連接 | 헤드폰을 블루투스 장치에 페어링하고 연결하십시오. | Menyandingkan dan menghubungkan dengan perangkat Bluetooth



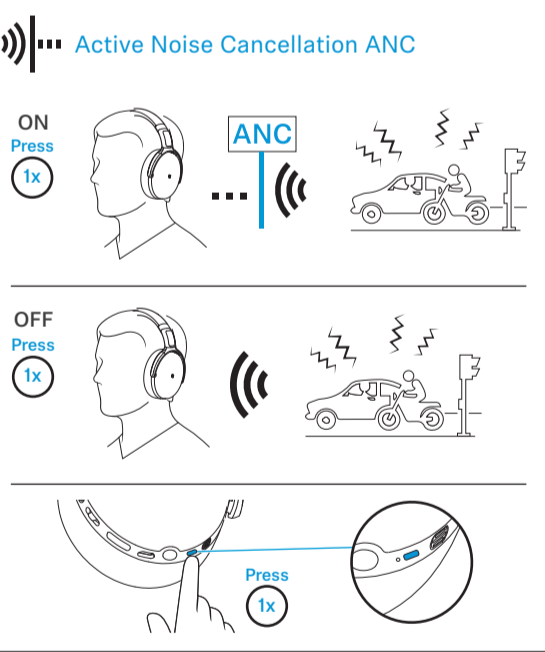
Kuulokkeiden kytkeminen päälle ja pois päältä | Ενεργοποίηση/ απενεργοποίηση των ακουστικών | Włączenie / wyłączenie słuchawek | Kulaklıkları açma/kapatma | Включение/ выключение наушников | ヘッドフォンのオン/オフの切り替え | 打开/关闭耳机电源 | 開/關頭戴式耳機 | 헤드폰 켜기/끄기 전환 | Menyalakan/mematikan headphone



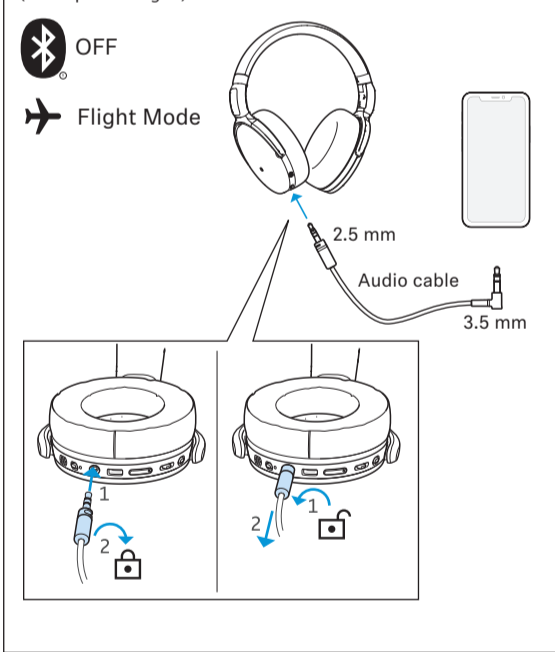
Puheavustajan ottaminen käyttöön / poistaminen käytöstä | Ενεργοποίηση/ απενεργοποίηση βοηθού γλώσσας | Włączenie / wyłączenie asystenta głosowego | Dil asistanını etkinleştir/kapat | Активация и деактивация голосового помощника | 音声アシスタントを有効/無効にする | 启用/禁用语音助手 | 啟用/停用語音助理 | 음성 도우미 활성화 / 비활성화 | Mengaktifkan/menonaktifkan bantuan bahasa



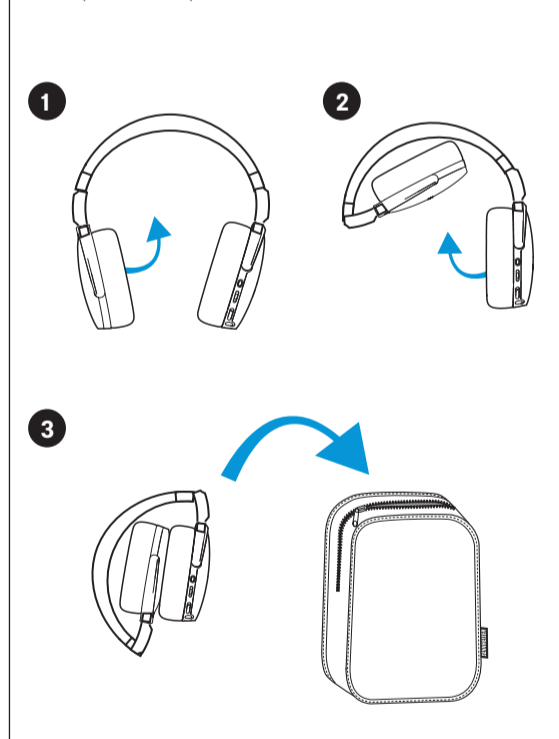
Aktiivisen melunvaimennuksen ANC käyttö | Χρήση ενεργής καταστολής θορύβου ANC | Zastosowanie aktywnego tłumienia hałasu ANC | Etkin ANC gücülü bastırmasını kullanma | Использование активного шумоподавления ANC | アクティブノイズキャンセリング(ANC)を使用する | 使用已激活的噪音抑制系統ANC | 使用已啟動的噪音抑制系統ANC | 액티브 소음억제 ANC 사용 | Mengaktifkan Peredaman Kebisingan Aktif (ANC)



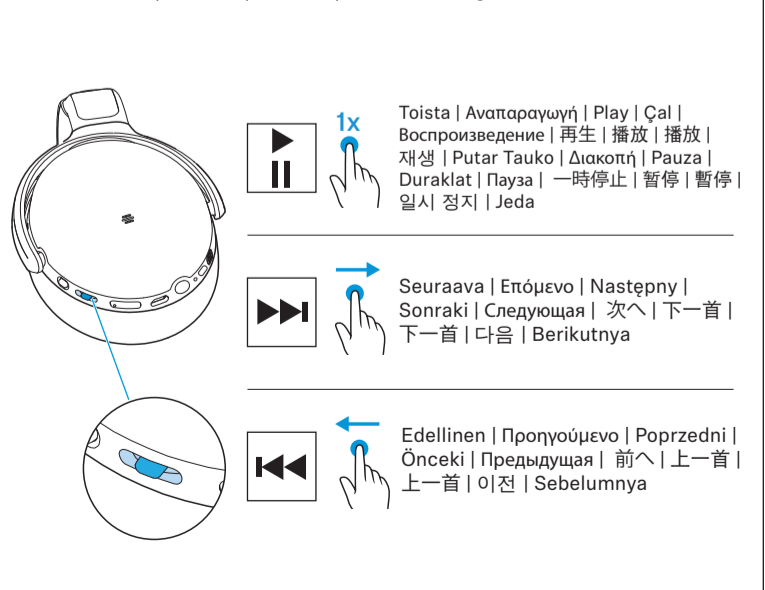
Audiokaapelin käyttö (lentotila) | Χρήση καλωδίου ήχου (λειτουργία πτήσης) | Använd ljudkabeln (flygplansläge) | Ses kablosunu kullanma (uçak modu) | 오디오케이블의 사용 (フラ이트 모드) | 使用音频线 (飞行模式) | 使用音訊連接線 (飛行模式) | 오디오 케이블 사용 (비행 모드) | Menggunakan kabel audio (mode penerbangan)



Taita ja säilytä | Ανοίξιμη και φύλαξη | Złożyć i zachować | Katla ve sakla | Складывание и хранение | 折り畳みと保管 | 折叠并保存 | 折叠並存放 | 접기 및 보관 | Melipat dan menyimpan



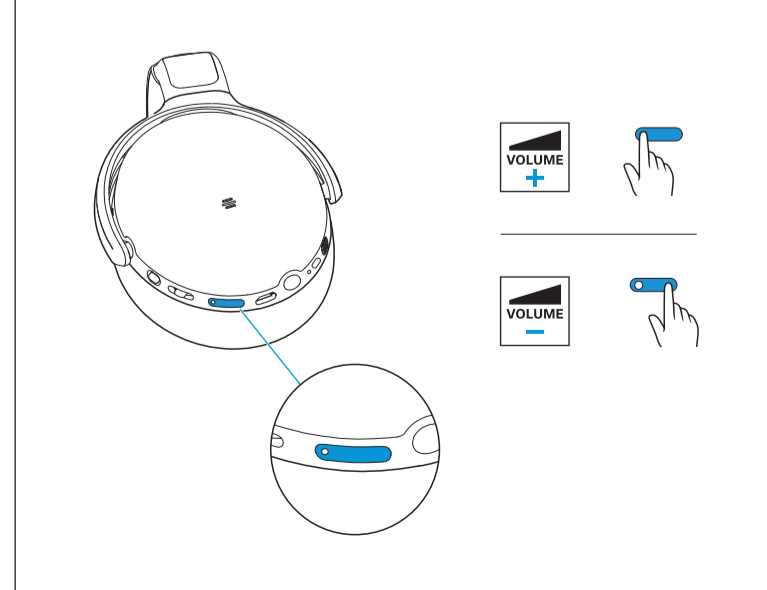
* Musiikkitoiminnot | Λειτουργίες μουσικής | Funkcje odtwarzania muzyki | Müzik işlevleri | Функции прослушивания музыки | ミュージック機能 | 音乐功能 | 音樂功能 | 음악 기능 | Fungsi musik



* Puhelutoiminnot | Λειτουργίες κλήσης | Funkcje połączeń telefonicznych | Çağrı işlevleri | Функции телефона | 通話機能 | 呼叫功能 | 通話功能 | 통화 기능 | Fungsi panggilan



Äänenvoimakkuuden säätäminen | Ρύθμιση της έντασης | Regulacja głośności | es šiddetinin ayarlanması | Регулировка громкости звука | 音量を設定する | 调节音量 | 調整音量 | 볼륨 조절하기 | Mengatur Volume Suara

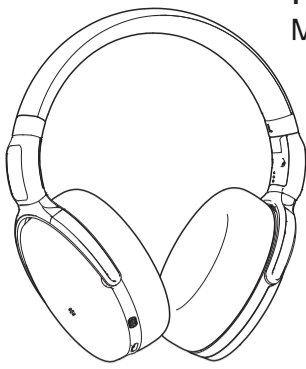


*Täydellinen toimintojen luettelo sisältyy käyttöohjeeseen. | Για την πλήρη λίστα λειτουργιών ανατρέξτε στο εγχειρίδιο χρήστη. | Kompletna lista funkcji - patrz instrukcja obsługi. | İşlevlerin tam listesi için kullanma kılavuzuna başvurun. | Подробнее смотрите инструкцию по эксплуатации. | 完全な機能のリストについては、ユーザーマニュアルを参照してください。 | 参阅用户手册查看完整的功能列表。 | 參考用戶手冊查看完整的功能列表。 | 전체 기능 목록은 사용자 설명서를 참조하십시오. | Merujuk kepada manual pengguna untuk daftar fungsi lengkap. www.sennheiser.com/download



HD 450SE

Model: SEBT4



- EE Lühijuhend
- LV Īsā instrukcija
- LT Trumpoji naudojimo instrukcija
- CS Stručný návod k použití
- SK Stručný návod
- HU Rövid útmutató
- RO Instrucțiuni succinte
- BG Кратко ръководство
- SL Kratka navodila
- HR Kratke upute

Pro nastavení a další funkce sluchátek použijte aplikaci. | Izmantojiet lietotni, lai veiktu klausules iestatīšanu un pārējo funkciju konfigurēšanu. | Norėdami valdyti kitas ausinių ir įrangos funkcijas, naudokite taikomąją programą. | Pro nastavení a další funkce sluchátek použijte aplikaci. | Použite aplikáciu na nastavenie a ďalšie funkcie slúchadla. | A fűhallgató beállításához és egyéb funkcióihoz használja az alkalmazást. | Utilizați aplicația pentru configurarea și pentru funcțiile adiționale ale căștilor. | За настройка и други функции на слушалката използвайте приложението. | Aplikaciju uporabite za nastavev in druge funkcije slušalk. | Upotrijebite aplikaciju za podešavanje i daljnje funkcije slušalice.

Smart Control

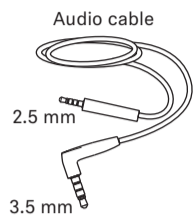
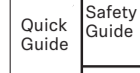
Download the free Sennheiser Smart Control app.



Download the free Amazon Alexa app.
Pair the HD 450SE via Bluetooth with your smartphone.
Open the app and add the "HD 450SE" to "Devices".
Smart Control app: activate "Alexa" in the headphone settings.

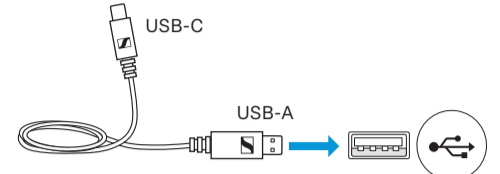
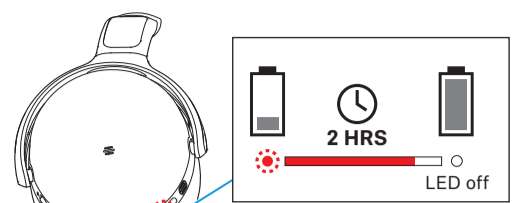


Tarnekomplekt | Komplektācija | Komplekte | Obsah balení | Rozsah dodávky | Szállított tartozékok | Conținutul pachetului de livrare | Съдържание на опаковката | Obseg dobave | Opseg isporuke



www.sennheiser.com/download
Detailed instruction manual

Kõrvklappide laadimine | Austiņu uzlāde | Ausinių krovimas | Nabijeni sluchátek | Nabijanie slúchadiel | A fejhallgató töltése | Încărcarea căștilor audio | Заряджана на слушалките | Polnjenje slušalk | Punjenje slušalice



SENNHEISER

Návod k obsluze a produktová podpora
Lietošanas instrukcijas un produktu atbalsts
Naudojimo instrukcija ir gamin palikimas
Návod k obsluze a produktová podpora
Návod na obsluhu a starostlivosť o výrobok
Kezelési útmutatók és termékgondozás
Instrucțiuni de utilizare și asistență privind produsul
Ръководства за експлоатация и поддръжка на продукта
Navodila za uporabo in podpora glede izdelkov
Upute za upotrebu i podrška za proizvode

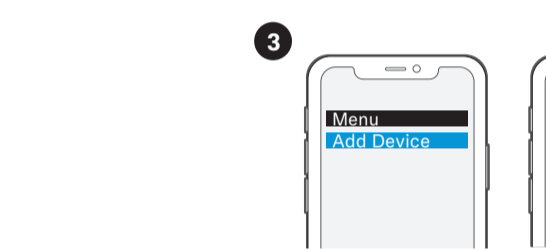
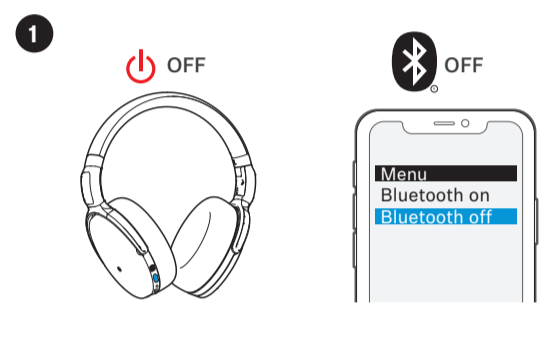
www.sennheiser.com
www.sennheiser.com/download
Smart Control
www.sennheiser.com/smartcontrol



Sennheiser is a trademark of Sennheiser electronic GmbH & Co. KG, registered in the U.S. and other countries. Use of the Made for Apple badge means that an accessory has been designed to connect specifically to the Apple product(s) identified in the badge, and has been certified by the developer to meet Apple performance standards. Apple is not responsible for the operation of this device or its compliance with safety and regulatory standards. Apple, iPad, iPhone, the Apple logo and Siri are trademarks of Apple Inc., registered in the U.S. and other countries. App Store is a service mark of Apple Inc. The trademark "iPhone" is used in Japan with a license from iPhone K.K. Android and Google play are registered trademarks of Google Inc. The Bluetooth word mark and logos are registered trademarks owned by Bluetooth SIG, Inc. and any use of such marks by Sennheiser electronic GmbH & Co. KG is under license. Amazon, Alexa and all related logos are trademarks of Amazon.com, Inc. or its affiliates. Other company and product names mentioned herein are trademarks of their respective owners.

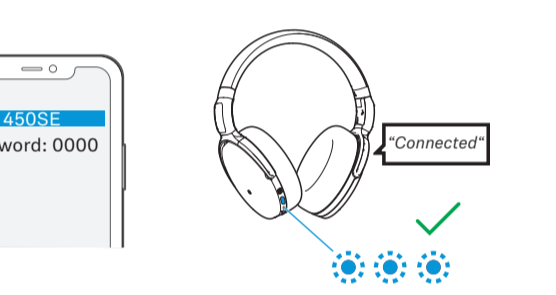
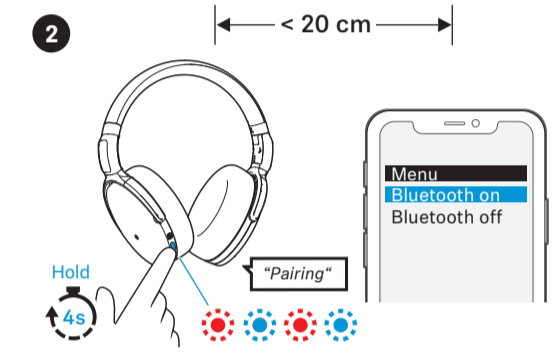
Sennheiser electronic GmbH & Co. KG
Am Labor 1, 30900 Wedemark, Germany
www.sennheiser.com
Publ. 07/21, 591129/A02

Kõrvklappide Bluetooth-seadmega sidumine ja ühendamine | Austiņu saslēgšana un savienošana ar Bluetooth iekārtu | Ausinių susiejimas su „Bluetooth“ įrenginiu ir prijungimas | Spojeni sluchátek s přístrojem pomocí Bluetooth | Spáovanie a spojenie sluchátek s prístrojom pomocou Bluetooth | Spoločovanie a spojenie náhlavného slúchadla so zariadením Bluetooth |

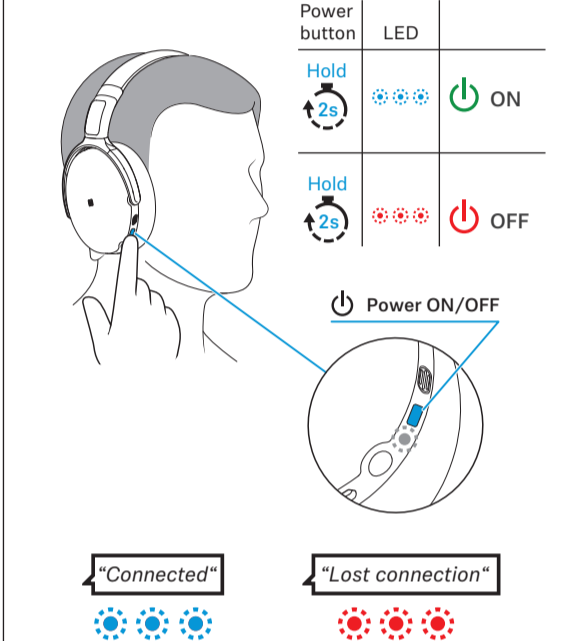


3
Menu
Add Device
HD 450SE
Keyword: 0000
Connected

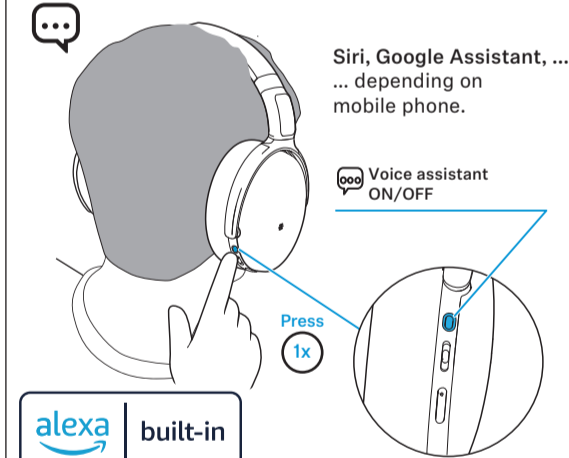
Fejhallgató összekapcsolása Bluetooth-készülékkel | Asociați și conectați căștile la dispozitivul Bluetooth | Сдвояване и свързване на слушалките с Bluetooth устройство | Priklop in povezava ušesnih slušalk z napravo Bluetooth | Uparivanje i spajanje slušalice s Bluetoothom



Kõrvklappide sisse-/väljalülitamine | Austiņu ieslēgšana un izslēgšana | Ausinių įjungimas / išjungimas | Zapnutí/vypnutí sluchátek | Zapnutie/vypnutie náhlavného slúchadla | Fejhallgató be-/kikapcsolása | Pornirea/Oprirea căștilor | Включване/изключване на слушалките | Vkllop/izklop slušalk | Uključivanje/isključivanje slušalice

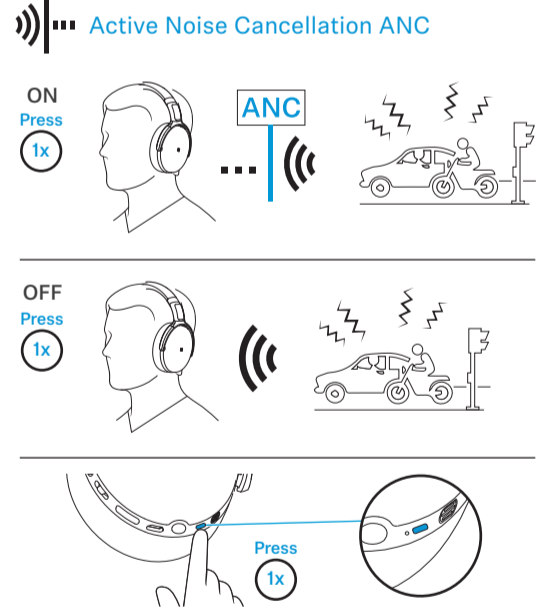


Häälassistenti aktiveerimine/inaktiveerimine | Balss asistenta aktivēšana un deaktivēšana | Kalbos asistento suaktyvinimas / deaktyvinimas | Aktivování / deaktivování jazykového asistenta | Aktivácia/deaktivácia hlasového asistenta | Beszédasszisztens aktiválása / deaktiválása | Activare/dezactivare asistent vocal | Активирание/деактивирание на гласовия асистент | Aktiviranje/deaktiviranje govornoga pomoćnik | Aktivacija/deaktivacija govornog asistenta

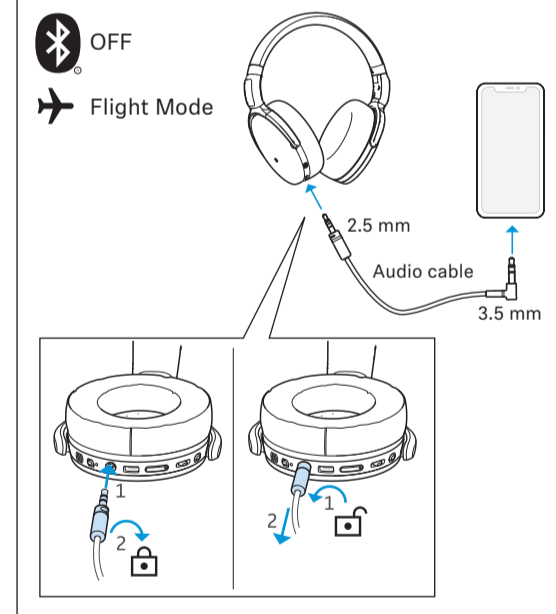


Download the Sennheiser Smart Control app and the Amazon Alexa app.
Alexa app: add the "HD 450SE" to "Devices".
Smart Control app: activate "Alexa" in the headphone settings.

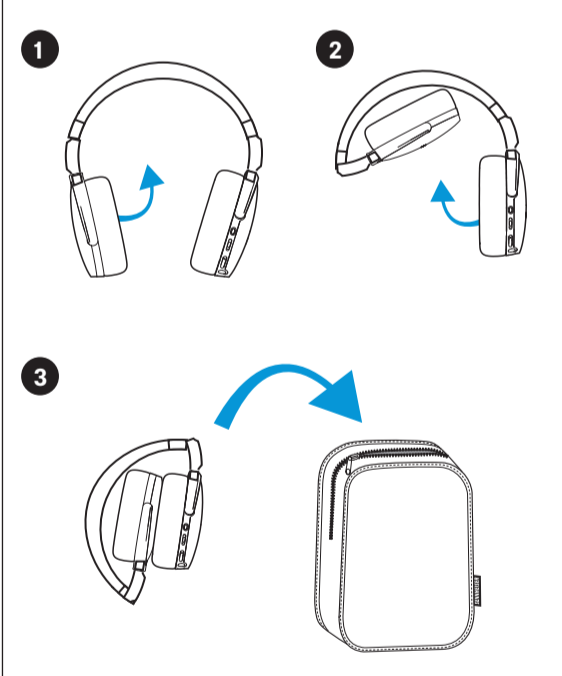
Aktīvie mūrasummutuse ANC kasutamine | Aktivās trokšņu slāpēšanas funkcijas ANC izmantošana | Naudokite aktyvintą triukšmo slopintuvą „ANC“. | Použití aktivního potlačení šumu ANC | Použitie aktívneho potlačenia zvuku ANC | ANC aktív zadržés alkalmazása | Utilizarea anulaării active a zgomotului ANC | Използване на функцията за активно потискане на шума ANC | Упорabi aktivno preprečevanje hrupa ANC | Upotreba aktivnog prigušenja zvukova ANC



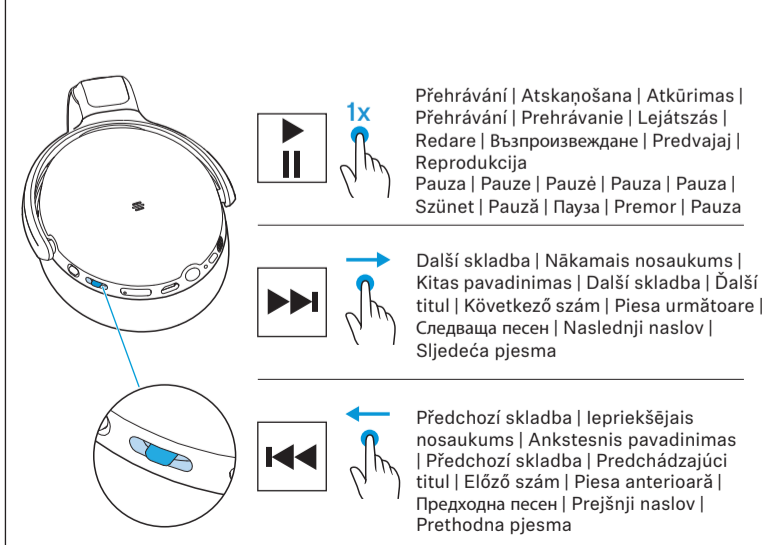
Audiokaabli kasutamine (lennerežiim) | Audiokabeļa izmantošana (lidmašīnas režīms) | Garso laido naudojimas (skrydžio režimas) | Použití audio kabelu (režim v letadle) | Používání audio kábla (letový režim) | Az audiokábel használata (repülőgép üzemmód) | Utilizarea cablului audio (mod zbor) | Използване на аудио кабел (режим полет) | Uporaba avdio kabla (letalski način) | Uporaba zvučnog kabla (zrakoplovni način)



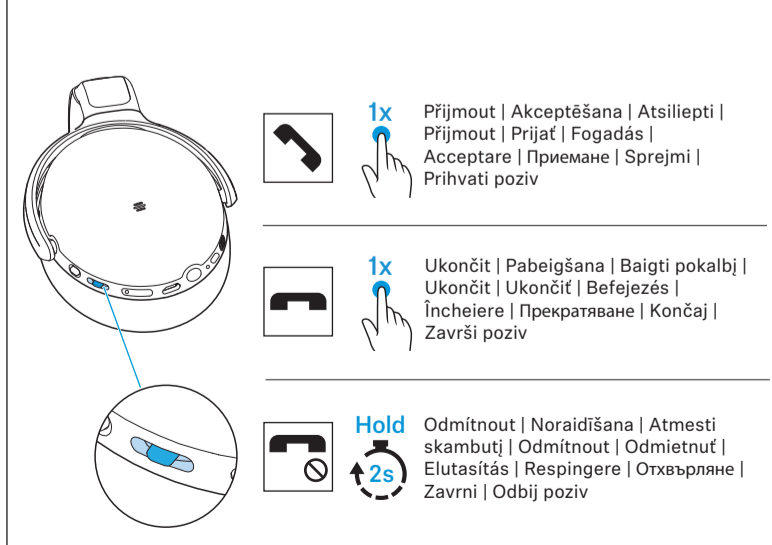
Hoiustamine ja käsitsemine | Glabāšana un apiešanās | Laikymas ir naudojimas | Uklādānā a manipulece | Skladovanie a manipulácia | Tárolás és kezelés | Depozitarea și manipularea | Съхранение и работа | Shranjevanje in rokovanje | Spremanje i rukovanje



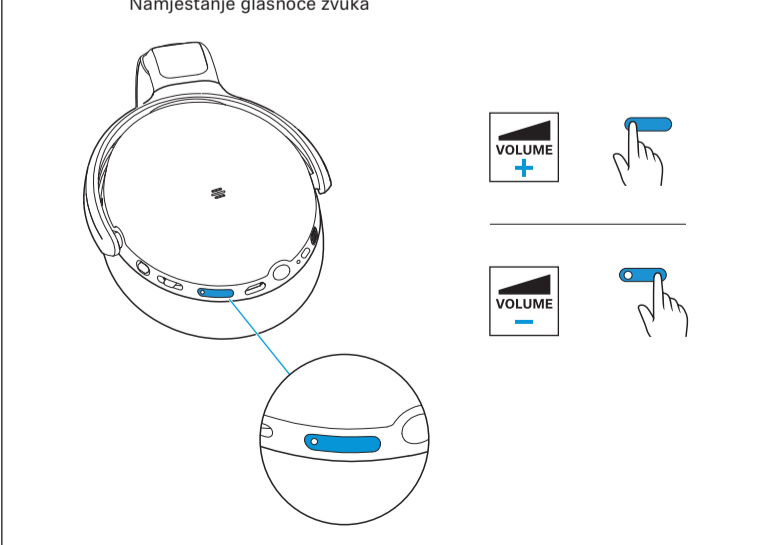
Muusika funktsioonid | Mūzikas funkcijas | Muzikos funkcijos | Funckce přehrávání hudby | Funkcie hudby | Zenei funkciók | Functii muzică | Функции за слушане на музика | Glasbene funkcije | Funkcije glazbe



Kõnefunktsioonid | Zvana funkcijas | Telefono funkcijos | Funckcie hovoru | Hívási funkciók | Functii apelare | Функции за повикване | Funkcije klica | Funkcije poziva



Helitugevuse seadmine | Skaļuma iestatīšana | Garsumo nustatymas | Nastavení hlasitosti | Nastavenie hlasitosti | Hangerő beállítás | Reglarea volumului | Настройка на силата на звука | Nastavev glasnosti | Namještanje glasnoće zvuka



* Komplettní seznam funkcí naleznete v návodu k obsluze. | Pilnu funkciju sarakstu var atrast lietotāja rokasgrāmatā. | Visų funkcijų sąrašą rasite naudojimo instrukcijoje. | Komplettní seznam funkcí naleznete v návodu k obsluze. | Úplný zoznam funkcií nájdete v návode na obsluhu. | A funkciók teljes listjára megtalálható a kezelési útmutatóban. | Găsiți lista completă a funcțiilor în instrucțiunile de utilizare. | Полный список на функциите ще намерите в ръководството за експлоатация. | Popoln seznam funkcij najdete v navodilih za uporabo. | Popis svih funkcija nalazi se u uputama za upotrebu.
www.sennheiser.com/download