

Windows 10 and Nextthink

Streamline your Windows 10 rollout and ensure an employee-centric lifecycle

ADDRESSING THE INEVITABLE

By 2020 and 2023, Microsoft will end its support of Windows 7 and 8 respectively. Already a complex and demanding process, companies now have the added pressure to migrate to Windows 10 as soon as possible. For large organizations, failing to do so efficiently is not only cost-intensive and time-consuming, but also puts their infrastructure at risk to security breaches and network failures. Windows 10 has also been released with Microsoft's new OS delivery philosophy, "Windows as a Service" (WaaS). Rather than release a new and complete version every couple of years, Microsoft will now continuously nurture Windows 10 with bi-annual feature updates and monthly quality updates. For unprepared IT teams, keeping up with these accelerated releases presents significant challenges as resources are strained to keep up with new updates, employee productivity is impaired due to irregular support, and systems are left vulnerable from version inconsistencies.

Ultimately, with Windows 10 and WaaS, IT teams need to adapt their Windows service management from project to process-oriented, and shift their production cycle to manage the associated risks, all while ensuring a productive digital workplace for their employees.

A NEW APPROACH WITH BETTER VISIBILITY AND CONTROL

To adapt to this climate of continuous change, IT needs the tools to safely and securely control their Windows service management. With Nextthink, enterprise IT can easily navigate through such periods of change with an unparalleled visibility over their Digital Employee Experience.

The Nextthink Windows 10 initiative not only allows IT to rapidly migrate to Windows 10 without production problems, but it also streamlines the monitoring, testing and deployment of continuous releases associated with WaaS. Through advanced automation, real-time metrics and employee sentiment insight, Nextthink enables IT teams to remain agile and proactively detect and fix performance deviations from a desired state. Support desks can then engage with employees and inform them about potential problems or remediate issues remotely without employees ever knowing. In the end, IT gains control over the entire Windows 10 lifecycle, allowing them to reduce migration length, costs and risks, and still keep up with accelerated releases to ensure WaaS stability.

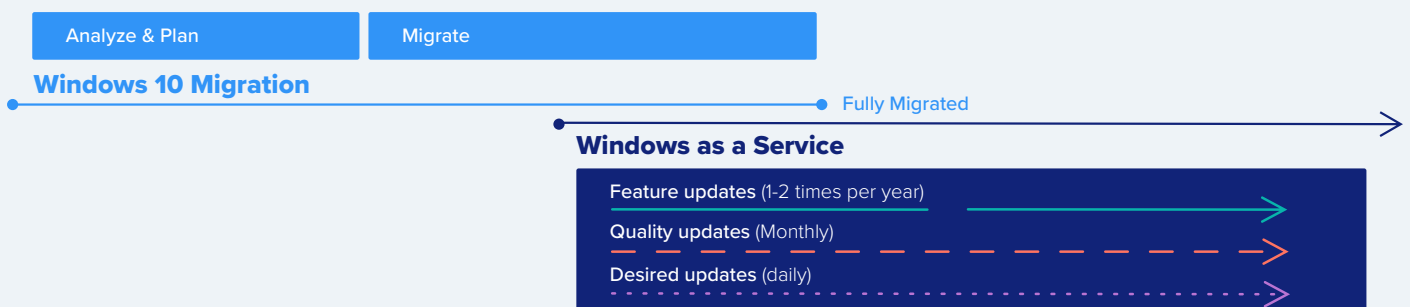
BUSINESS BENEFITS

- Reduce migration time, costs and risks
- Streamline update management
- Ensure service compliance
- Improve employee productivity and satisfaction
- Gain visibility over the Windows 10 lifecycle



For complex workplace projects such as a Windows 10 migration, Nextthink provides an excellent tool for the IT provider, project manager and customer representative to check the existing infrastructure for compatibility, and at the same time show the progress of the project.

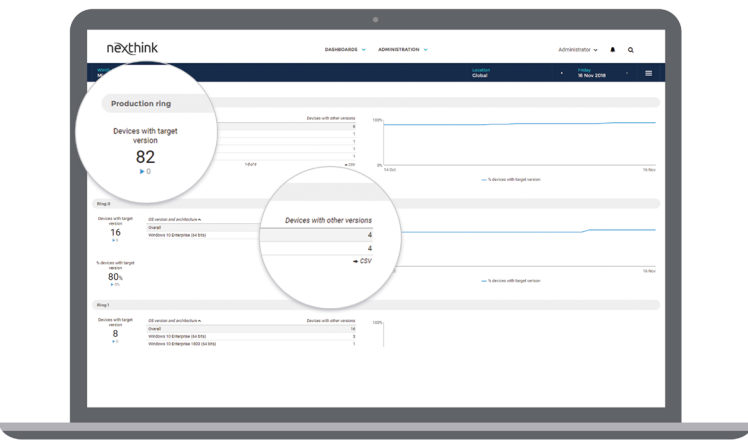
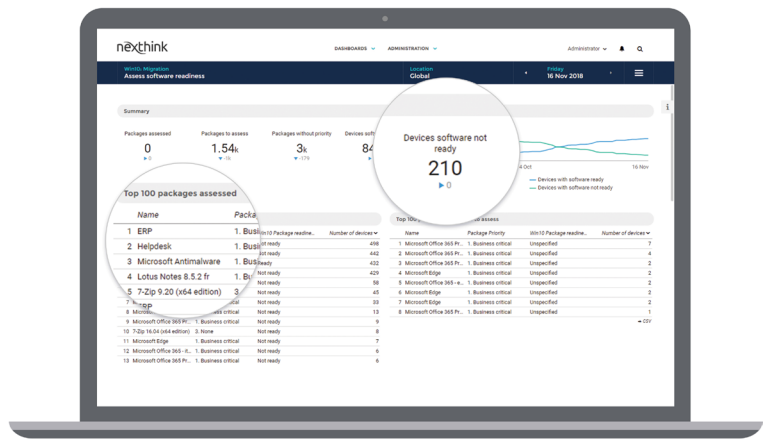
Daniel Fritz,
Head of End-User Services, Avectris AG



Migrate in control

Plan and migrate securely to Windows 10 to reduce deployment time, risks and resources.

- Document and analyze the IT landscape to ensure pre-migration readiness and plan for hardware replacement costs
- Consider each devices in the infrastructure and migrate them regardless of location, department or business group
- Monitor progress using a range of data, metrics and insights to optimize rollout and detect issues along the way
- Engage with employees during deployment to keep them aware of project details and prevent experience seclusion



Sustain Windows as a Service with confidence

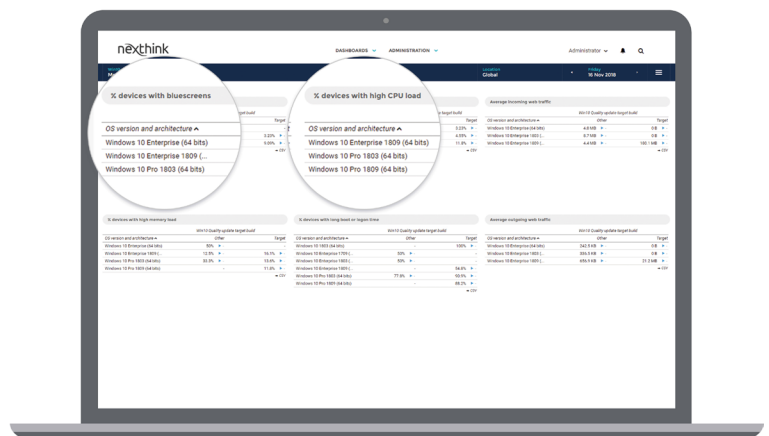
Streamline deployment processes to increase IT Teams' agility and keep up with WaaS accelerated release updates.

- Assign representative production rings to prepare and test each update rollout before mass deployment
- Ensure devices are updated and reduce the deployment length of new version releases
- Take action using metrics based on device performance, employee satisfaction and network consumption
- Continuously engage with employees to monitor their digital experiences and maintain a strong user experience

Maintain a desired state of compliance

Ensure compliance, monitor performance and remediate deviations from a desired IT environment.

- Monitor device compliance based on a desired state and easily detect security and performance deviations
- Proactively resolve desired state deviations in real time with remote actions and automatic remediations
- Track performance degradations and drill-down to impacted users and devices to diagnose root problems
- Synchronize with Microsoft SCCM and support modern device management initiatives



LEARN MORE

The Nexthink platform enables enterprise IT to measure, monitor and improve Digital Employee Experience. It drives the collection and aggregation of real-time data from all of your endpoints, facilitates automated remediation and provides high-level metrics for instant visibility and continuous improvement. Learn more and schedule a demo at www.nexthink.com.