



SENNHEISER



AMBEO Soundbar | Mini

Model: SB02S

- EN Quick Guide
- DE Kurzanleitung
- FR Guide rapide
- ES Instrucciones resumidas
- PT Guia rápidos
- NL Beknopte handleiding
- IT Guida rapida
- DA Kort vejledning
- SV Snabbguide



Sonova Consumer Hearing GmbH
Am Labor 1, 30900 Wedemark, Germany
www.sennheiser-hearing.com
Publ. 11/22, 591148/A01

Package contents | Lieferumfang | Contenu | Volumen de suministro | Material fornecido | Omvang levering | Dotazione | Leveringsomfang | Medföljande delar

AMBEO Soundbar | Mini
Model: SB02S

Premium High Speed HDMI cable | Power cable, country-specific | Remote control Model: SB02-RC incl. battery CR 2032 | Quick guide Safety guide

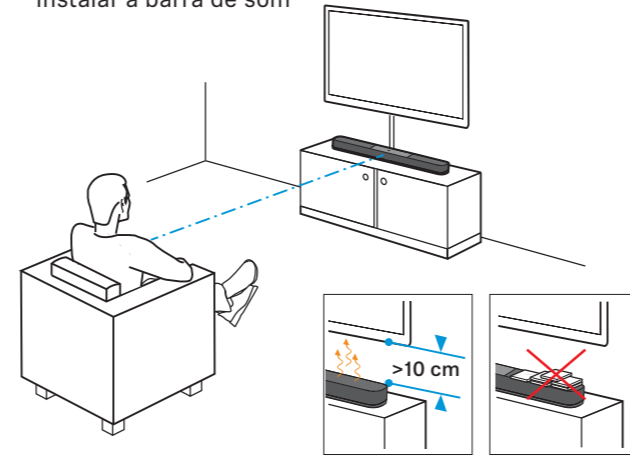
www.sennheiser-hearing.com

Smart Control Sennheiser Smart Control app | Manual and support

Amazon, Alexa and all related marks are trademarks of Amazon.com, Inc. or its affiliates. Alexa is not available in all languages and countries. Alexa features and functionality may vary by location.
Android, Google play, Google play logo, Google Chromecast built-in and Google Home are trademarks of Google LLC.
App Store is a service mark of Apple Inc. Use of the Works with Apple badge means that an accessory has been designed to work specifically with the technology identified in the badge and has been certified by the developer to meet Apple performance standards. To control this AirPlay 2-enabled speaker, iOS 11.4 or later is required.
The Spotify Software is subject to third party licenses found here: <https://www.spotify.com/connect/3rd-party-licenses>. Use your phone, tablet or computer as a remote control for Spotify. Go to [spotify.com/connect](https://www.spotify.com/connect) to learn how.

1 Installing the Soundbar
Soundbar aufstellen
Installer la Soundbar
Colocar la barra de sonido
Instalar a barra de som

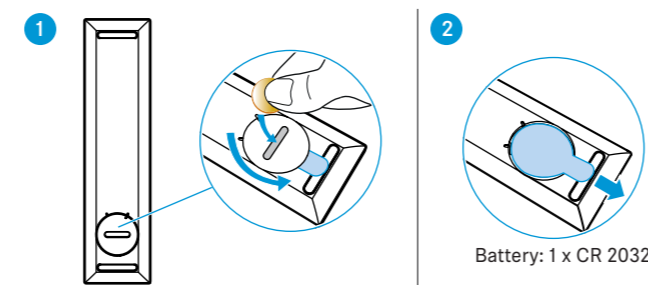
De soundbar installeren
Installazione della Soundbar
Installation of soundbar
Installera Soundbar



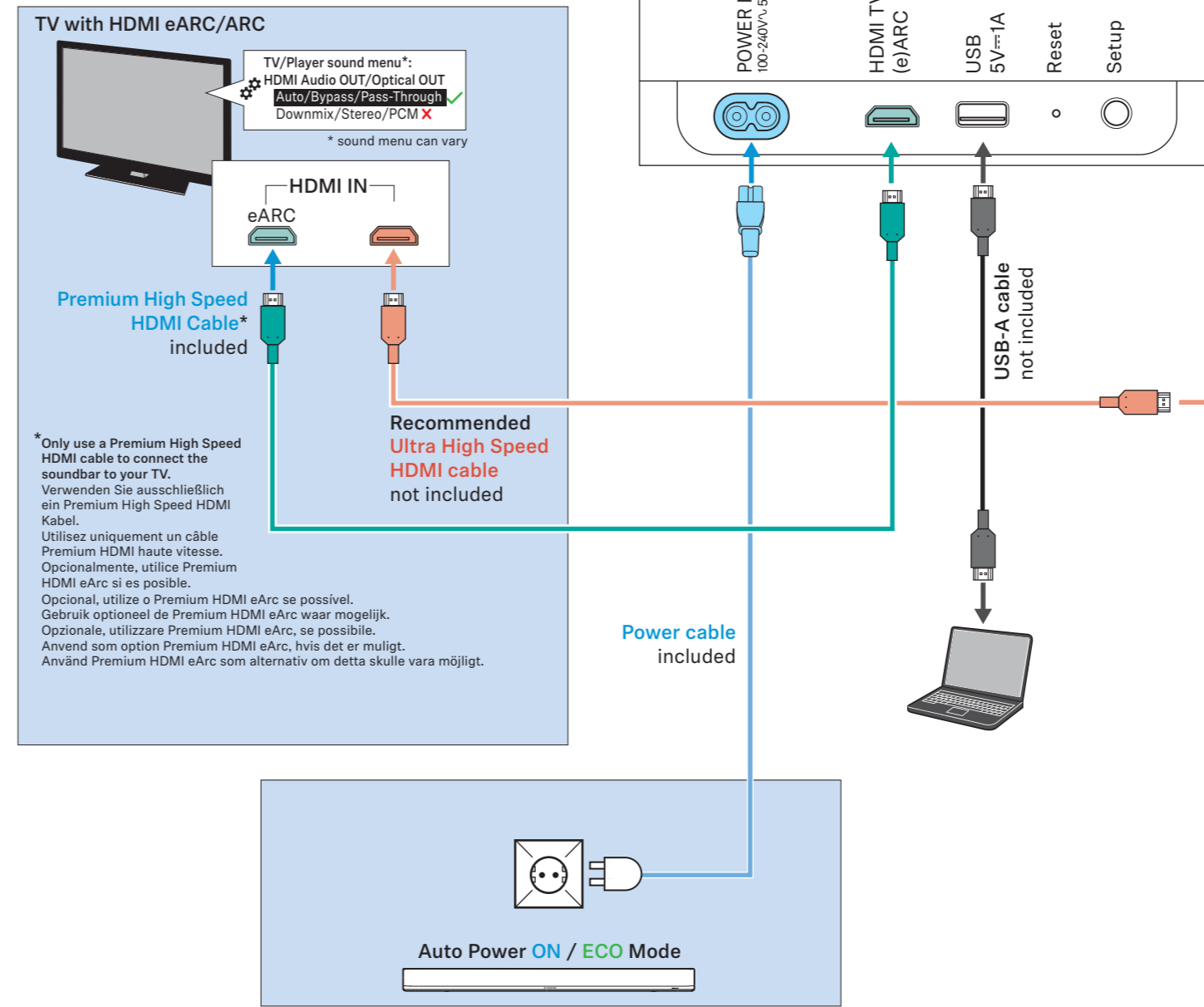
Wall mount SB02-WM
Wall mount (optional accessory)
Wandhalterung (optionales Zubehör)
Support mural (accessoire optionnel)
Soporte mural (accessorio opcional)
Suporte de parede (acessório opcional)
Wandhouder (optioneel accessoire)
Supporto a parete (accessorio opzionale)
Væggholder (ekstra tilbehør)
Väggfäste (separat tillbehör)

Manual SB02-WM

Remote control SB02-RC
Remote control | Control remoto | Telecomando | Fernbedienung | Contrôle remoto | Afstandsbediening | Fjärrkontroll



2 Connecting the Soundbar to a TV and other audio sources
Soundbar an ein Fernsehgerät und andere Audioquellen anschließen
Raccorder la Soundbar à une télé et à d'autres sources audio
Conectar la barra de sonido a un televisor y a otras fuentes de audio



Ligar a barra de som a um televisor ou a outras fontes áudio
De soundbar aansluiten op een tv en andere bronnen
Collegamento della Soundbar a un televisore e ad altre sorgenti audio
Tilslut soundbaren til et fjernsyn og andre lydtkilder
Anslut Soundbar till en tv-apparat och andra ljudkällor

3 Smart Control

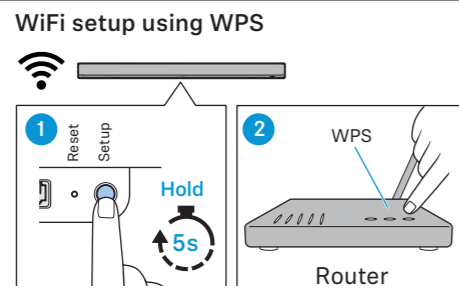


Installing the Smart Control app for your smartphone
Smart Control App für Ihr Smartphone installieren
Installer l'appli Smart Control pour votre smartphone
Instalar la app Smart Control para su smartphone
Instalar a/o aplicação (aplicativo) Smart Control para o seu smartphone
Smart Control-app voor uw smartphone installeren
Installazione dell'app Smart Control per lo smartphone
Installér Smart Control-appen til din smartphone

3.1 WiFi

Setting up the WiFi settings
WLAN-Einstellungen einrichten.
Configurer les réglages Wi-Fi.
Configurar los ajustes de WLAN
Configurar as definições WLAN
WLAN-instellingen instellen
Configurazione delle impostazioni WLAN
Indstilt WLAN-indstillingerne
Upprätta Wi-Fi-inställningarna

Optional | Optional | En option | Opcional | Opcional | Optie | Opzionale | Option | Valfritt



3.2 Smart Control

Starting room calibration in the Smart Control app
Raumkalibrierung in der Smart Control App starten
Démarrer le calibrage de la pièce dans l'appli Smart Control
Iniciar la calibración de sala en la app Smart Control
Iniciar a calibração espacial na/no aplicação/ aplicativo Smart Control
Kalibratie van de ruimte in de Smart Control-app starten
Avvio della calibrazione ambientale nell'app Smart Control
Start af rumkalibrering i Smart Control-appen
Starta rumskalibrering i appen Smart Control



4

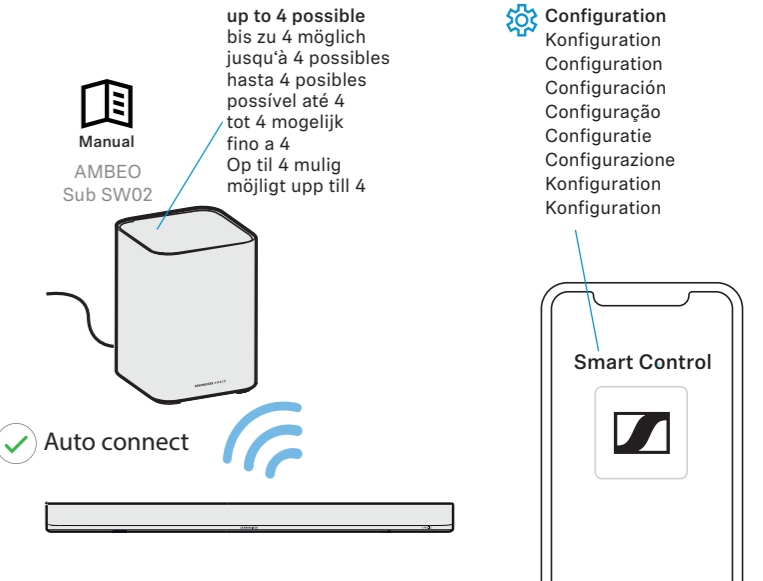
To voice control the soundbar, use:
Nutzen Sie zur Steuerung der Soundbar:
Pour le contrôle vocal de la Soundbar, utilisez :
Utilice para el control por voz de la barra de sonido:
Para o comando por voz da barra de som, use:
Gebraukt u voor de spraakbesturing van de soundbar:
Per il comando vocale della Soundbar utilizzare:
Anvend følgende til sprogtstyring af soundbaren:
Använd Soundbar för röststyrning:



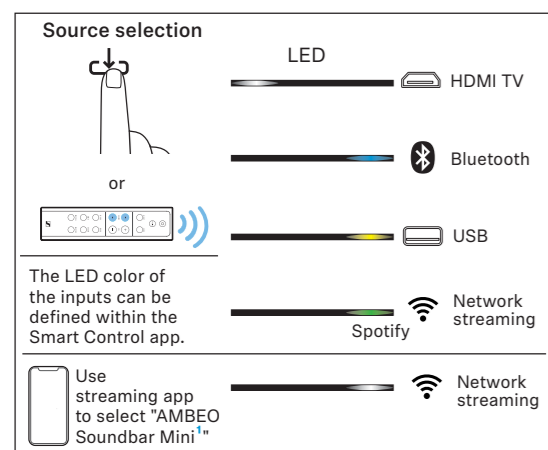
Internet connection and user account required. The availability of Amazon Alexa and Alexa Cast and Google Home and Chromecast depends on region.

Optional | Optional | En option | Opcional | Opcional | Optie | Opzionale | Option | Valfritt

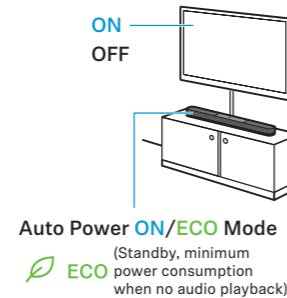
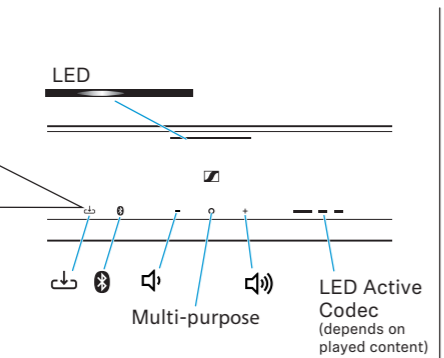
Wirelessly connecting the AMBEO subwoofer SW02 to the soundbar
AMBEO Subwoofer SW02 drahtlos mit Soundbar verbinden
Connecter sans fil l'AMBEO subwoofer SW02 avec la Soundbar
Conectar el AMBEO subwoofer SW02 con la barra de sonido de forma inalámbrica
Ligar o subwoofer SW02 AMBEO à barra de som sem fios
AMBEO Subwoofer SW02 draadloos met de soundbar verbinden
Collegare AMBEO Subwoofer SW02 senza fili con la Soundbar
Trådløs forbindelse af AMBEO-subwoofer SW02 med soundbar
Anslut AMBEO Subwoofer SW02 trådlöst till Soundbar
Connecting the soundbar to the AMBEO subwoofer SW02 via Bluetooth



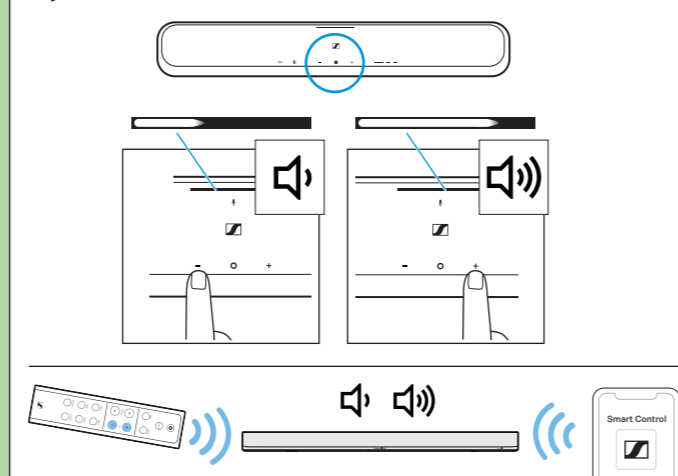
Operating elements of the soundbar



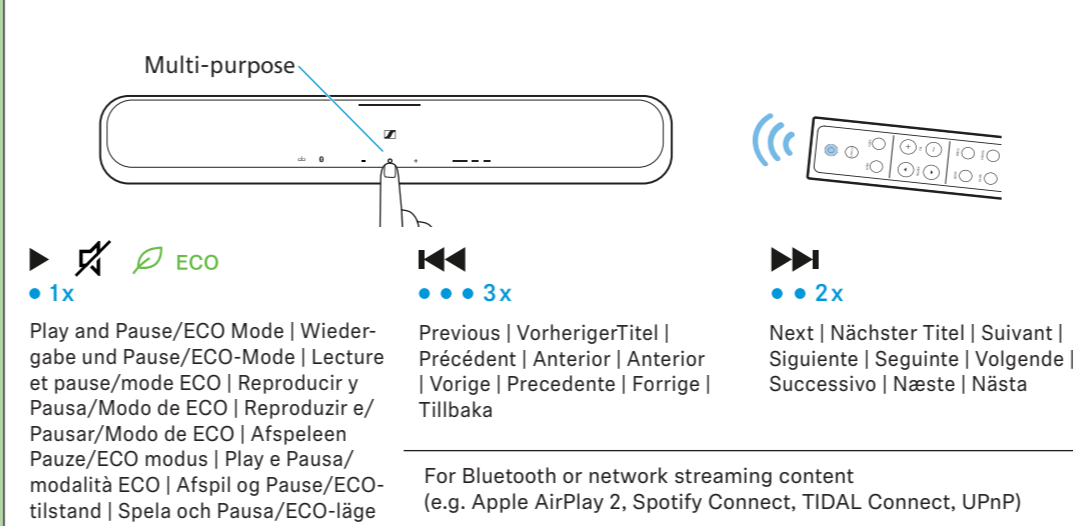
Elementos de operação da barra de som



Adjusting the volume

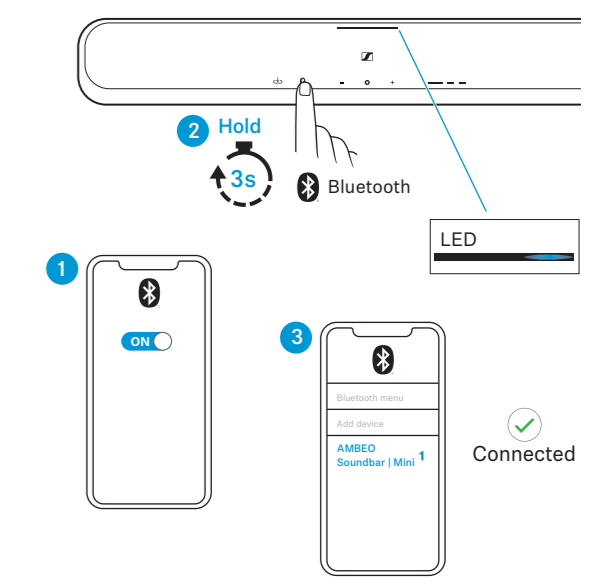


Playback control



Pairing the Soundbar to a mobile device using Bluetooth

Soundbar über Bluetooth mit einem Mobilgerät koppeln
Connecter la Soundbar à un appareil mobile via Bluetooth
Conectar la barra de sonido con un dispositivo móvil via Bluetooth
Ligar a barra de som a um dispositivo móvel por Bluetooth
De soundbar via Bluetooth met een mobiel toestel verbinden
Collegamento della Soundbar via Bluetooth con un dispositivo mobile
Forbindelse af soundbar med et mobilt apparat via Bluetooth
Ansluta Soundbar till en mobil enhet via Bluetooth



* if Alexa is activated the Multi-purpose button on the soundbar will turn to Alexa action button to trigger Alexa. See instruction manual or Smart Control app for details.

1 the Bluetooth/network name can be defined within the Smart Control app



SENNHEISER



AMBEO Soundbar | Mini Model: SB02S

- FI Pikaohje
EL Σύντομες οδηγίες
PL Krótka instrukcja obsługi
TR Kısa Kılavuz
RU Краткая инструкция
JA クイックガイド
KO 빠른 안내서
ID Panduan ringkas
ZH-HANS 快速指南
ZH-HANT 快速指南



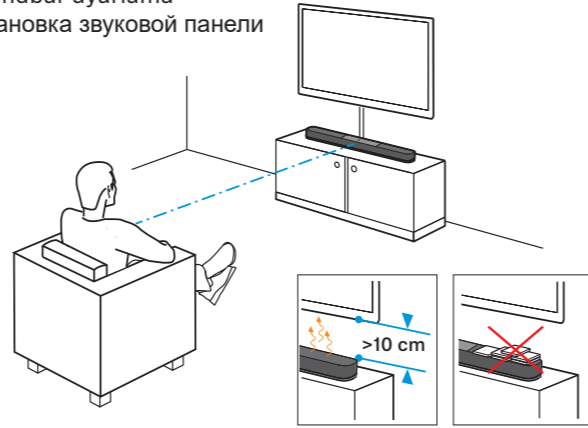
Sonova Consumer Hearing GmbH Am Labor 1, 30900 Wedemark, Germany www.sennheiser-hearing.com

Publ. 11/22, 591148/A01

Product specifications and accessories list including Premium High Speed HDMI cable, Power cable, Remote control, and Quick guide.

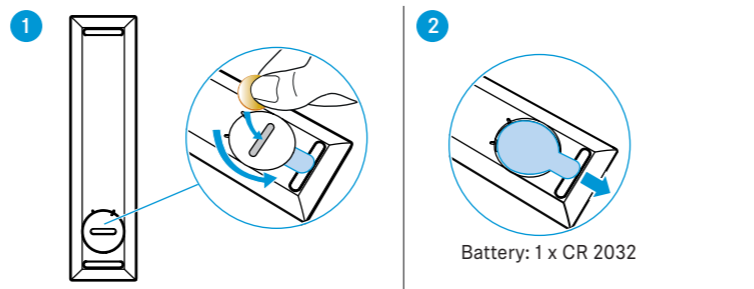
Amazon, Alexa and all related marks are trademarks of Amazon.com, Inc. or its affiliates. Alexa is not available in all languages and countries.

1 Soundbar-kaiittimensijoitusspaikan valinta
Eγκτάσταση Soundbar
Ustawianie zestawu soundbar
Soundbar ayarlama
Установка звуковой панели



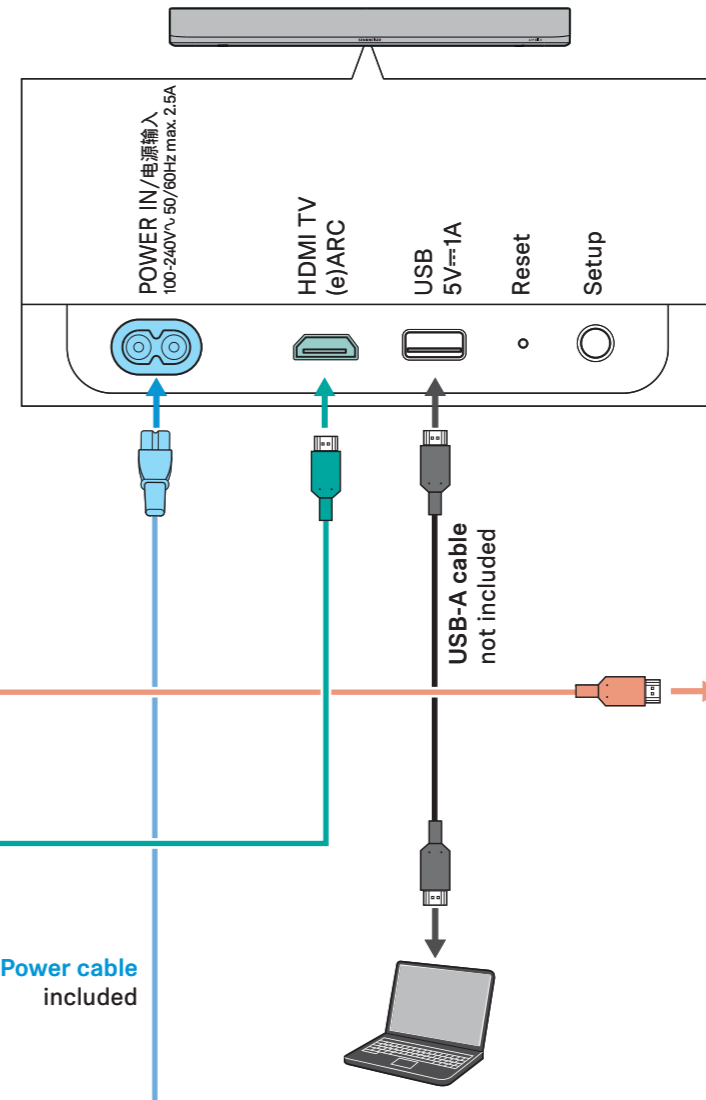
Wall mount SB02-WM Seinäpidike (valinnainen varuste)
Επιτοίχιο στήριγμα (προαιρετικό παρελκόμενο)
Uchwyt ścienny (opcjonalny)
Duvar askısı (opsiyonel aksesuar)
Настенное крепление (опциональный аксессуар)
ウォールブラケット (オプションアクセサリ)
벽면 부착용 브래킷 (옵션 액세서리)
Braket dinding (aksesori opsional)
壁掛式支架 (可選附件)
雙掛式支架 (可選附件)

Remote control SB02-RC
Kauko-ohjaus
Τηλεχειριστήριο
Zdalna obsługa
Uzaktan kumanda
Дистанционное управление
리모콘
Pengendali jarak jauh
远程控制
遠程控制



2 Soundbar-kaiittimen yhdistäminen televisiovastaanottiin ja muihin audiolähteisiin
Σύνδεση του Soundbar με μια τηλεόραση και άλλες ηχητικές πηγές
Podłączenie zestawu soundbar do telewizora i innych źródeł dźwięku
Soundbar'ın televizyona ve diğer ses kaynaklarına bağlanması

Diagram showing TV connection options: Premium High Speed HDMI Cable, Recommended Ultra High Speed HDMI cable, and USB-A cable.



Подключение звуковой панели к телевизору и другим источникам аудиосигнала
Сאונדבאר-טעלעוויזאר און אנדערע אודיוקוואלן
Menyambungkan soundbar ke TV atau sumber audio lain
將音箱连接到电视和其他音频源
將條形音箱連接到電視和其他音訊源

3 Smart Control
GET IT ON Google Play
Download on the App Store
www.sennheiser-hearing.com/smartcontrol
Asenna älypuhelimieesi sopiva Smart Control -sovellus.

3.1 WiFi setup using WPS
Määrittele WLAN-asetukset
Ορίστε τις ρυθμίσεις WLAN
Wprowadź ustawienia WLAN
Wprowadzić ustawienia WLAN
WLAN ayarlarını yapılmış
Настройте Wi-Fi
Wi-Fi設定を行います。
WLAN 설정을 구성합니다。
Menetapkan pengaturan WLAN
調整WLAN設置。
調整WLAN設定。

3.2 Smart Control
Huonekalibroinnin käynnistäminen Smart Control -sovelluksessa
Έναρξη βαθμονόμησης στην εφαρμογή Smart Control
Rozpoczęcie kalibracji pomieszczenia w aplikacji Smart Control
Smart Control uygulamasında ortam kalibrasyonunun başlatılması
Запуск калибровки помещения в приложении Smart Control
Smart Controlアプリで部屋のキャリブレーションを開始します
Smart Control App에서 톤 보정 시작하기
Memulai kalibrasi ruang pada aplikasi Smart Control
在Smart Control App中启动室内校准
在Smart Control App中啟動室內校準

4 Käytä Soundbar-kaiittimen puheohjaukseen:
Για φωνητικό έλεγχο του Soundbar χρησιμοποιήστε:
Do sterowania głosowego należy wykorzystać zestaw soundbar:
Soundbar'in sesli araması için kullanınız:
Для голосового управления звуковой панелью используйте:
Σαουνδבאר'ן אודיו קאנטראל צו ניצוטן די קלאנג-קאנטראל סעט.
Gunakan Soundbar untuk kontrol suara:
使用音箱进行语音控制:
使用音箱進行語音控制:

Valinnainen | Προαιρετικά | Opcjonalnie | İsteğe bağlı | Опция | オプション | 옵션 | Opsional | 可选 | 可選
AMBEO Subwoofer SW02 -kaiittimen yhdistäminen langattomasti Soundbar-kaiittimeen
Δυνατότητα σύνδεσης του AMBEO Subwoofer SW02 με το Soundbar
Bezprzewodowe połączenie subwoofera AMBEO SW02 z zestawem soundbar
AMBEO Subwoofer SW02'nin kablosuz Soundbar'a bağlanması
Беспроводное соединение сабвуфера AMBEO SW02 со звуковой панелью
AMBEO Subwoofer SW02를 사운드바에 무선 연결하기
Menghubungkan AMBEO Subwoofer SW02 nirkabel dengan Soundbar
將AMBEO超低音音箱SW02與音箱無線連接
將AMBEO超低音音箱SW02與音箱無線連接

Soundbar-kaiittimen painikkeet
Στοιχεία χειρισμού του Soundbar
Elementy obsługi zestawu soundbar
Soundbar'in kumanda elemanları

Элементы управления звуковой панели
Σαουνδבאר'ן אודיו קאנטראל
Elementy obsługi zestawu soundbar
Elemen pengoperasian Soundbar

音箱的操作元件
音箱的操作元件
ON OFF
Auto Power ON/ECO Mode
ECO power consumption when no audio playback

Äänenvoimakkuuden säätäminen
Ρύθμιση έντασης
Regulacja głośności
Ses düzeyini ayarlama
Регулировка громкости звука
音量を調節する
볼륨 조절
Mengatur volume suara
調節音量
調節音量

Toiston ohjaus
Στοιχεία ελέγχου αναπαραγωγής
Sterowanie odtwarzaniem
再生制御
Oynatım kontrolü
Управление воспроизведением
再生制御
Kontrol pemutaran
播放控制
播放控制

Bluetooth-pariliitoksen muodostaminen
Soundbar-kaiittimen ja mobiililaitteen välillä
Ζεύξη του Soundbar με μια κινητή συσκευή μέσω Bluetooth
Łączenie zestawu soundbar przez Bluetooth z urządzeniem mobilnym
Soundbar'ı Bluetooth üzerinden bir mobil cihazla eşleştirme
Сопряжение звуковой панели с мобильным устройством через Bluetooth
Σαουνδבאר-טעלעוויזאר און און אנדערע אודיוקוואלן
Menyandingkan Soundbar ke perangkat seluler melalui Bluetooth
將音箱通过蓝牙与移动设备配对
將音箱透過藍牙與行動設備配對

if Alexa is activated the Multi-purpose button on the soundbar will turn to Alexa action button to trigger Alexa. See instruction manual or Smart Control app for details.

the Bluetooth/network name can be defined within the Smart Control app



SENNHEISER



AMBEO Soundbar | Mini

Model: SB02S

- EE Lühijuhend
- LV Īsā instrukcija
- LT Trumpoji naudojimo instrukcija
- CS Stručný návod k použití
- SK Stručný návod
- HU Rövid útmutató
- RO Instrucțiuni succinte
- BG Кратко ръководство
- SL Kratko navodila
- HR Kratke upute



Sonova Consumer Hearing GmbH
Am Labor 1, 30900 Wedemark, Germany
www.sennheiser-hearing.com
Publ. 11/22, 591148/A01

Tarnekomplekt | Komplektacija | Kompletas | Obsah balení | Rozsah dodávky | Szállított tartozékok | Conținutul pachetului de livrare | Обем на доставката | Obseg dobave | Opseg isporuke

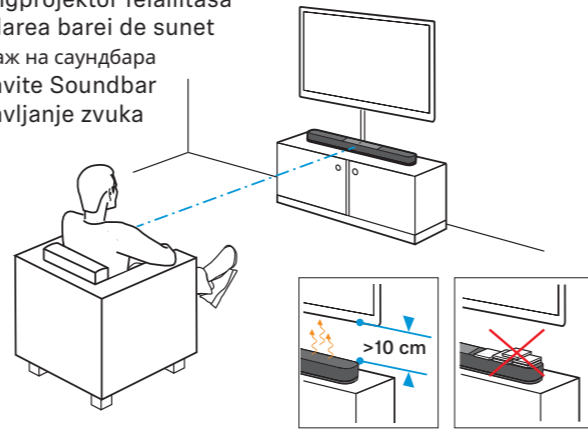
www.sennheiser-hearing.com

Smart Control Sennheiser hearing app

Manual and support

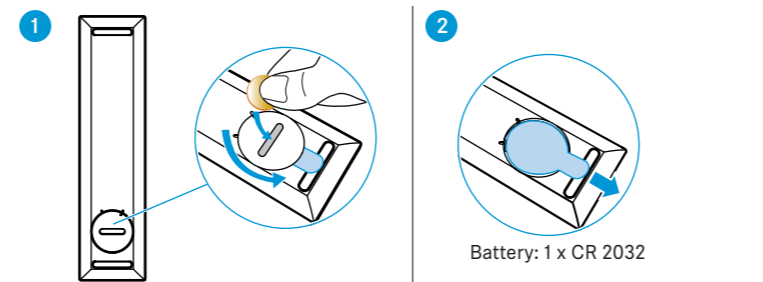
Amazon, Alexa and all related marks are trademarks of Amazon.com, Inc. or its affiliates. Alexa is not available in all languages and countries. Alexa features and functionality may vary by location. Android, Google play, Google play logo, Google Chromecast built-in and Google Home are trademarks of Google LLC. App Store is a service mark of Apple Inc. Use of the Works with Apple badge means that an accessory has been designed to work specifically with the technology identified in the badge and has been certified by the developer to meet Apple performance standards. To control this AirPlay 2-enabled speaker, iOS 11.4 or later is required. The Spotify Software is subject to third party licenses found here: https://www.spotify.com/connect/3rd-party-licenses. Use your phone, tablet or computer as a remote control for Spotify. Go to spotify.com/connect to learn how.

- Soundbar-kõlari paigaldamine
Uzstādiēt Soundbar
Garso sistemos pastatymas
Instalace soundbaru
Instalácia Soundbaru
A hangprojektor felállítása
Instalarea barei de sunet
Монтаж на саундбара
Postavite Soundbar
Postavljanje zvuka

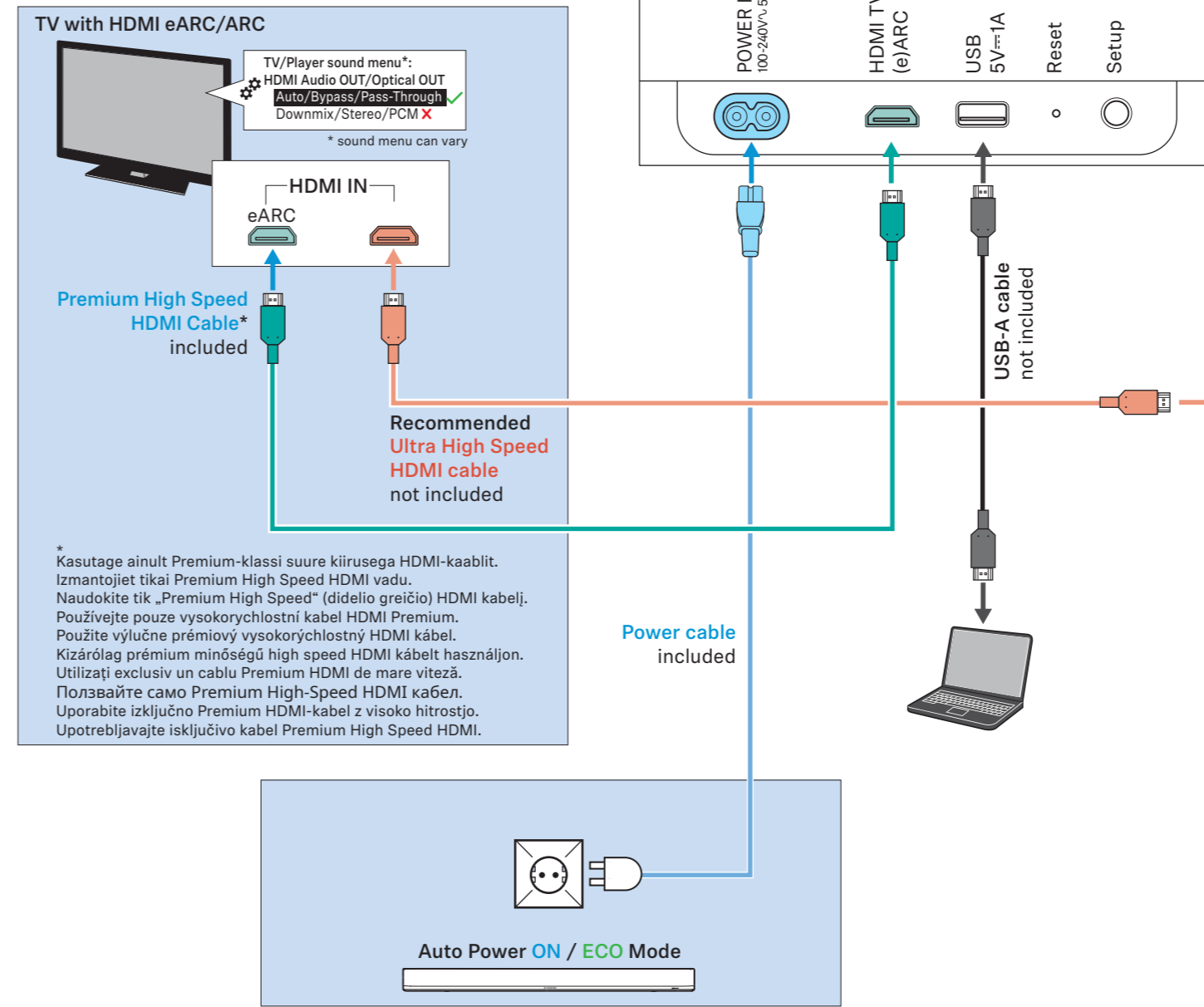


- Wall mount SB02-WM
- Seinahoidik (valikuline tarvik)
Sienas stiprinājums (papildpiederums)
Sieninis laikiklis (papildomi priedai)
Nástěnný držák (volitelné příslušenství)
Nástěnný držiak (voliteľné príslušenstvo)
Fali tartó (opcionális tartozék)
Support de perete (accessorii optionale)
Стенен монтаж (опционален аксесоар)
Stenski nosilec (izbirna dodatna oprema)
Zidni nosač (dodatna oprema)

- Remote control SB02-RC
- Кaugjuhtimispuult
Tälvadiba
Nuotolinis valdiklis
- Далковэ овлáдáни
Dialkové ovládanie
Távírányítás
- Telecomandă
Дистанционно управление
Daljinski upravljalnik
Daljinski upravljač



- Ühendage Soundbar-kõlar televiisori ja muude heliallikatega
Pieslēdziet Soundbar pie televizora un citiem audio avotiem
Garso sistemos prijungimas prie televizoriaus ir kitų vaizdo šaltinių
Pripojte soundbar k televizoru a ďalším zdrojům zvuku
Pripojenie Soundbaru na televízor alebo iné zdroje zvuku
Csatlakoztassa a hangprojektor t a televíziókészülékhez vagy más hangforrásokhoz



Conectarea barei de sunet la un aparat TV și la alte surse audio
Свързване на саундбара към телевизор или други аудио източници
Soundbar priključite na televiziju ali drugi vir zvoka
Priključite zvučnik na televizor i druge izvore zvuka

3 Smart Control

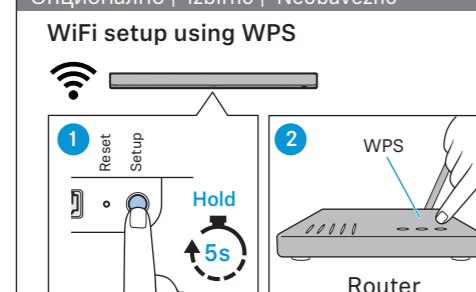


Installige nutitelefoni rakendus Smart Control
Instalējiet savā viedtālrunī SmartControl lietotni „Smart Control App” taikomosios programos
jdiegimas jūsu išmaniajam telefonui
Nainstalujte si do chytrého telefonu aplikaci Smart Control
Nainštalujte aplikáciu Smart Control pre smartfón
Smart Control App teipitėšė okostelefonara
Instalarea aplicației Smart Control pentru smart-phone
Инсталирайте Smart Control App за Вашия смартфон
Namestite aplikaciju Smart Control za vaš pametni telefon
Instalirajte aplikaciju Smart Control na vašem pametnom telefonu

3.1 WLAN

WLAN-seadistuste tegemine.
Ievadiet WLAN iestatījumus.
WLAN nusstatumų įrengimas.
Upravte nastaveni WLAN.
Vykonaite nastavenia WLAN.
Vykonajte nastavenia WLAN.
WLAN beállítások.
Configurati setările WLAN.
Исполните WLAN-настройкки.
Izbira nastavitve WLAN.
Podesite postavke WLAN-a.

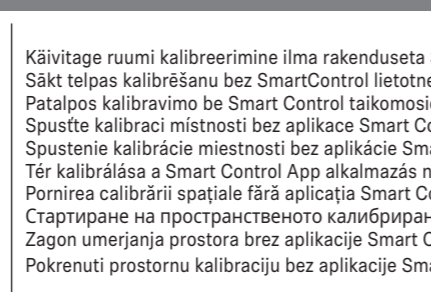
WiFi setup using WPS



3.2 Smart Control

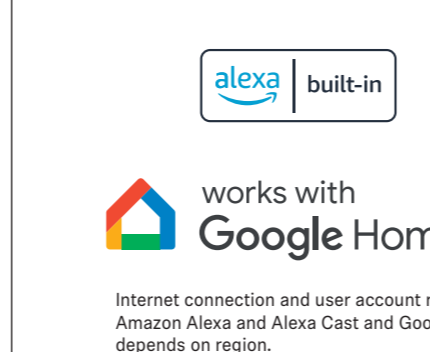
Kāivitage rakendusēs Smart Control ruumi kalibrērimine
Sākt telpas kalibrēšanu ar SmartControl lietotni
Patalpos kalibravimo Smart Control taikomajama programa pradžia
Spustite kalibraci miestnosti v aplikacij Smart Control
Spustenie kalibrácie miestnosti v aplikácii Smart Control
Tér kalibrálása a Smart Control App alkalmazásában
Porridgea calibrării spațiiale în aplicația Smart Control
Стартиране на пространството калибриране в Smart Control App
Zagon umerjanja prostora v aplikaciji Smart Control
Pokrenuti prostornu kalibraciju u aplikaciji Smart Control

WiFi setup using WPS



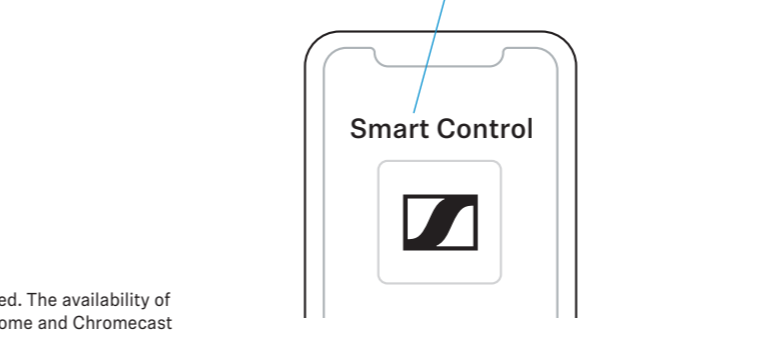
4 Soundbar-kõlari häälujuhtimise kasutamine:

Soundbar vadibai izmantojiet:
Garso sistemos valdikiui naudokite:
K ovládání soundbaru použijte:
Na ovládanie Soundbaru použijte:
Használja a hangprojektor vezérléséhez:
Pentru comanda barei de sunet utilizați:
За контрол на саундбара, ползвайте:
За krmiljenje Soundbara uporabite:
За glasovno upravljanje zvučnika upotrebljavajte:



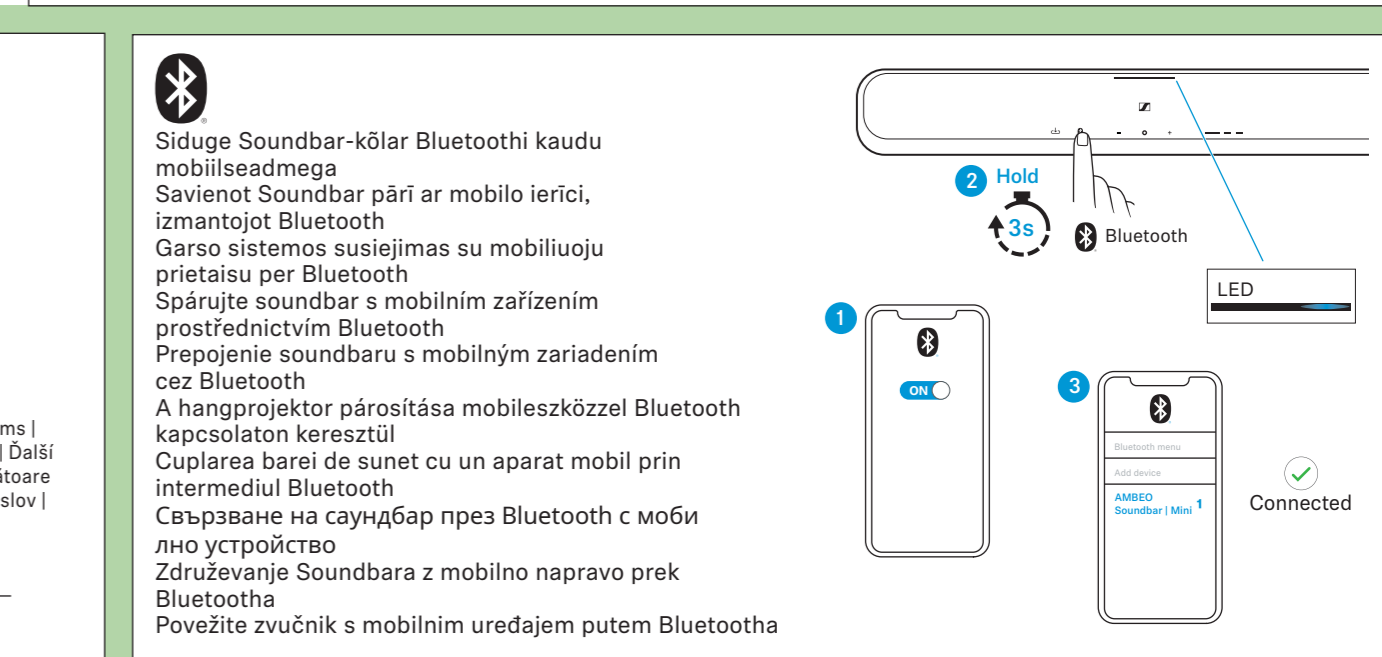
4 Smart Control

Konfiguratsioon
Konfiguracija
Konfigurace
Konfiguracia
Konfiguració
Konfigurare
Конфигурация
Konfiguracja
Konfiguracija

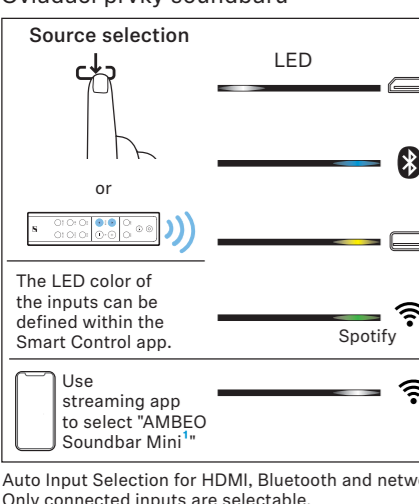


Valikvarustus | Papildaprīkojums | Pasirinktinai | Volitelně | Voliteľne | Opcionális | Opțional | Оpcionально | Izbirno | Neobavezno

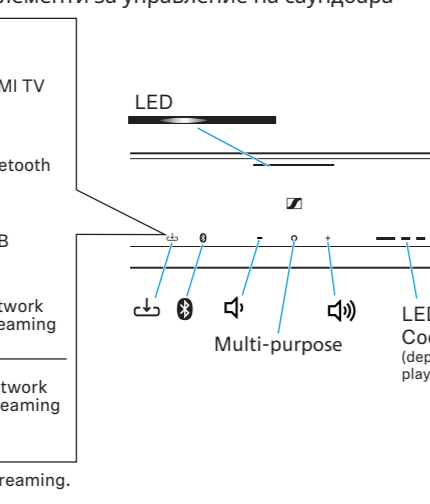
AMBEO bassikõlari mudeli SW02 juhtmevaba ühendamise Soundbar-kõlariga
AMBEO Sub Model SW02 bezvadu savienošana ar Soundbar „AMBEO Sub” modelis SW02 beļaidis su garso sistēma
Pripoite subwoofer AMBEO model SW02 bezdrátové k soundbaru
Bezdrtové pripojenie AMBEO Sub Model SW02 so Soundbarom
Az AMBEO Sub Model SW02 vezeték nélküli csatlakoztatása a hangprojektorhoz
Conectarea modelului AMBEO Sub SW02 wireless la bara de sunet
Бежично свързване на AMBEO, под модел SW02 към саундбар
AMBEO Sub Model SW02 brezžično povežite s Soundbarom
Bežično povežite AMBEO Sub Model SW02 sa zvučnikom



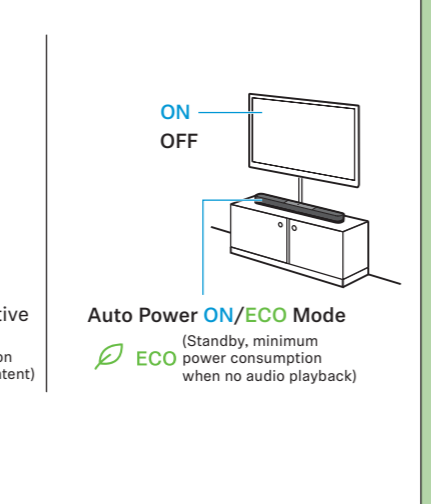
Soundbar-kõlari juhtelemendid



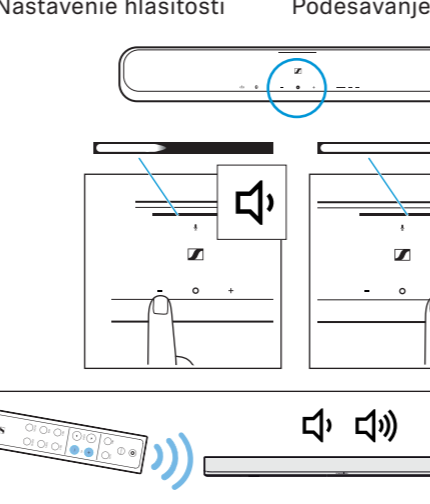
Ovládacie prvky soundbaru



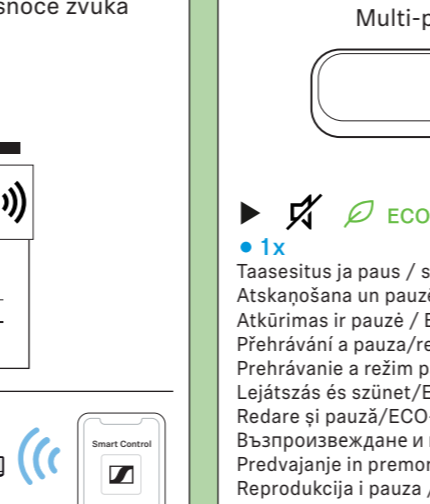
Upravljalni elementi Soundbara



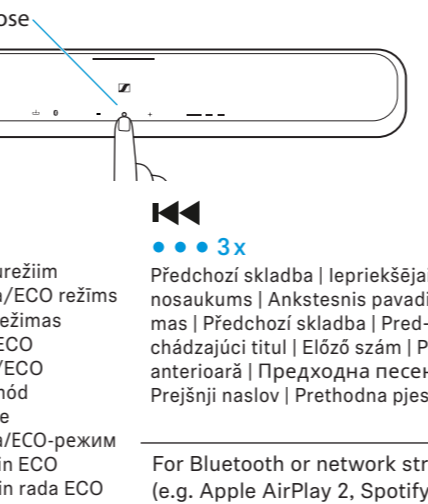
Helitugevuse seadmine



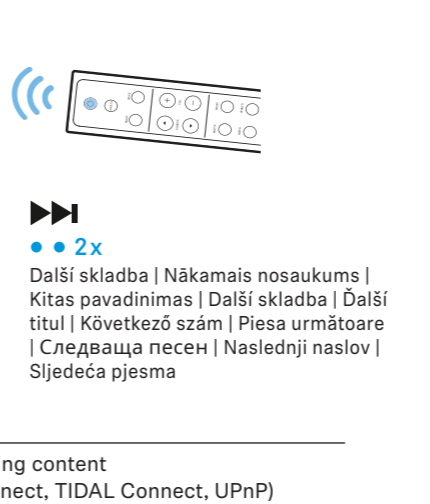
A hangerõ beállítása



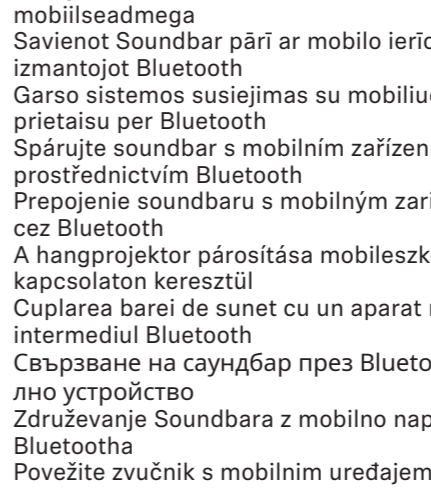
Taasesituse reguleerimine



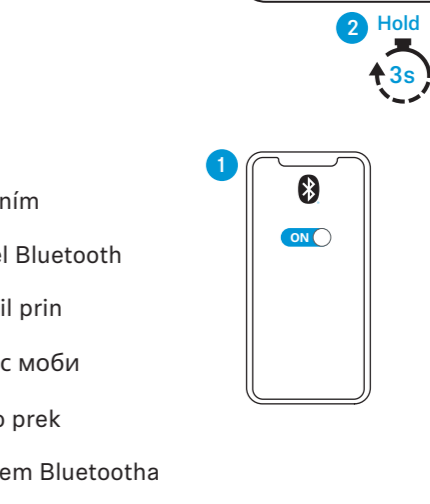
Ovládání přehrávání



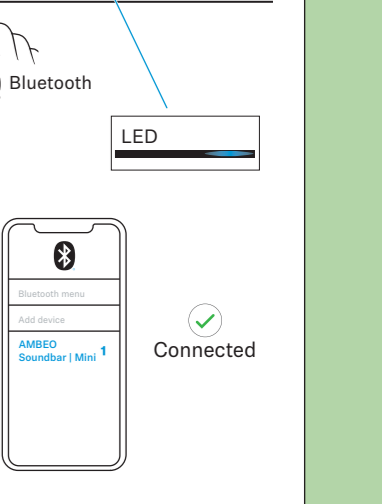
Comandă redare



Свързване на саундбара



Bluetooth connection



* if Alexa is activated the Multi-purpose button on the soundbar will turn to Alexa action button to trigger Alexa. See instruction manual or Smart Control app for details. † the Bluetooth/network name can be defined within the Smart Control app