

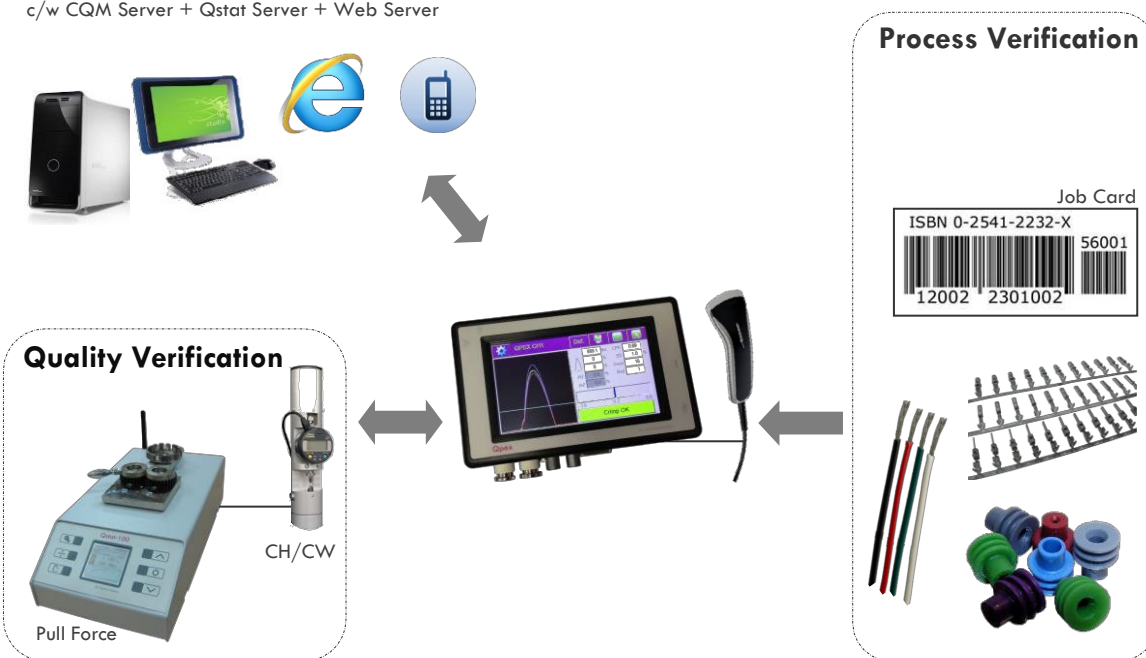


Qpex – in short for **Quality & Process expert**, was designed using our proven SL series CFM technology that was endorsed by Automotive Manufacturer worldwide to guarantee 100% quality monitoring. We have expanded the connectivity to allow real-time process monitoring to assure setup was done according to Engineering requirements and the Quality Data for every production crimp is recorded for traceability purpose.

...not just a CFM but a **Quality and Process Verification Expert**

QpNet

c/w CQM Server + Qstat Server + Web Server



QUALITY & PROCESS EXPERT – Qpex
QUALITY CONTROL AT YOUR FINGERTIPS

QpNet

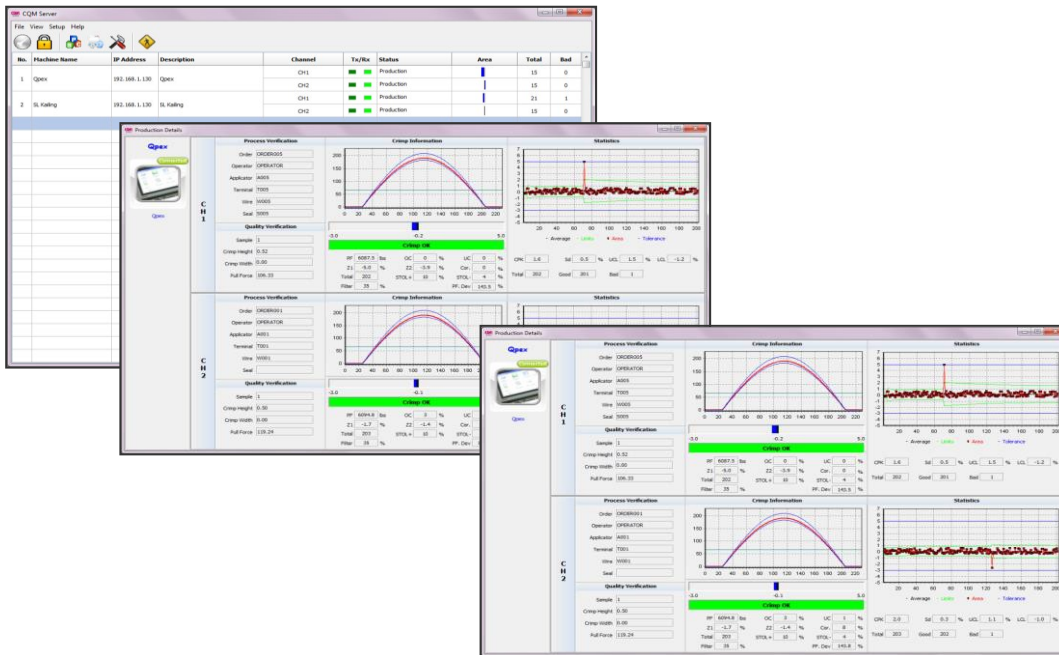
- In short for Quality & Process Network.
- Engineering data are converted to simple csv file as database stored in the server. This database will be synchronized with Qpex once the network is up. During production, the system will compare for a valid Wire-End against the database to prevent erroneous setup.
- Thereafter, the system will compare the setup crimp specifications against Engineering requirements in terms of Crimp Height / Crimp Width / Pull Force before Qpex releases the machine for production.
- All production crimps are recorded according to users' definition on how they would like to store these data.



QUALITY & PROCESS EXPERT – Qpex
QUALITY CONTROL AT YOUR FINGERTIPS

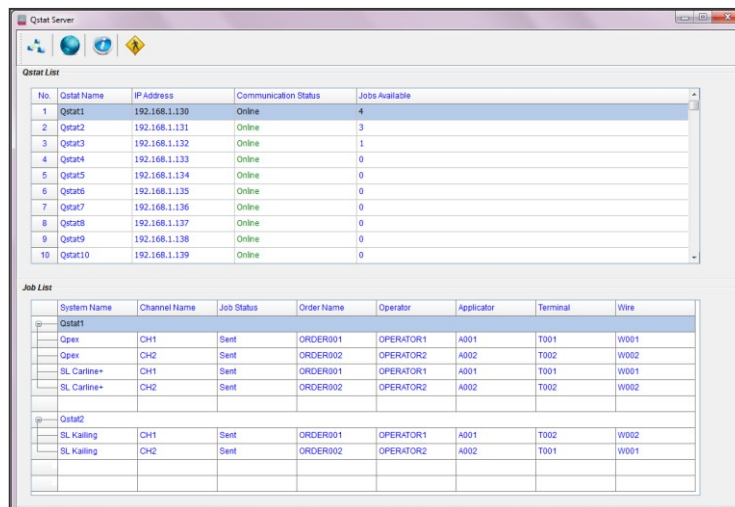
CQM Server

- Supports up to 32x Crimp Force Monitors.
- Quick overview of CFM systems on production floor and zoom in for details information.
- Selectable Quality Data storage, ALL BAD crimps, ALL GOOD & BAD crimps, Partial GOOD and ALL BAD crimps, etc. for maximizing storage capacity.
- Built-in SPC viewer allows completed order capability to be reviewed quickly.
- Individualized tolerances setting for CFM based on engineering optimization.
- Process Verification handling to support older systems such as SL Carline+ and SL Starlite.



Qstat Server

- Supports up to 10x Qstat-100 “Quality Station”.
- Queue up to 20x jobs per Qstat, allowing random job pick.
- Fully integrated with QpNet for Quality verification via Qstat-100 to ensure both Crimp Height and Pull Force specifications are met.
- Supports multiple clients like CQM Server, Qpex, SL Vision 3 & Qstat PC Software.

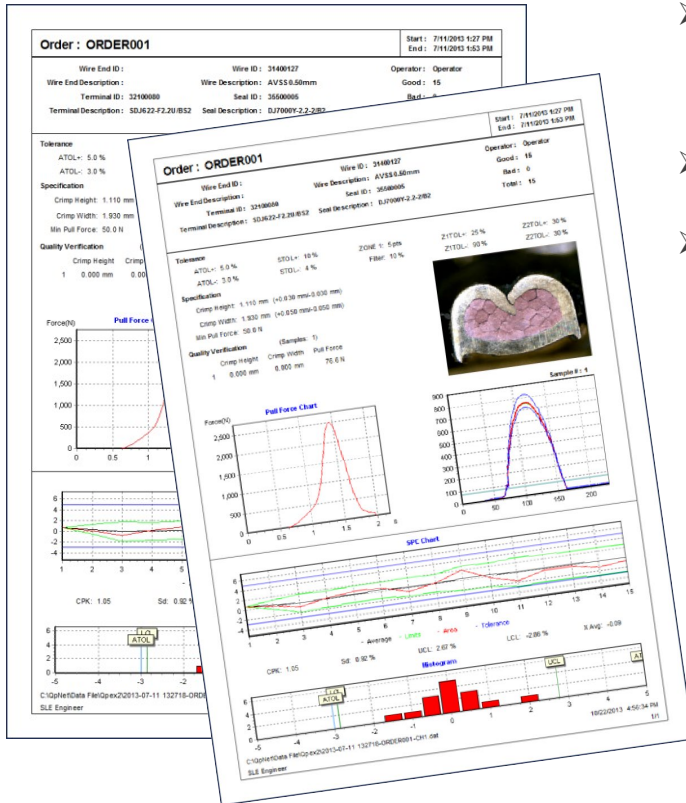


**QUALITY & PROCESS EXPERT – Qpex
QUALITY CONTROL AT YOUR FINGERTIPS**



Web Server

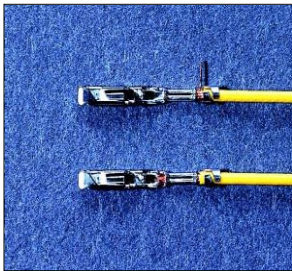
- Embedded web-server that allows remote accessibility of Production Status & Quality Data information through web browser.
- Access and monitors the production status ANYTIME, ANYWHERE using Explorer/Safari via your Notebook, Tablet and Smartphone device.



Report Generation

- With the vast Quality Data recorded on the QpNet system, analysis can be done easily to optimize processes.
- Easy generation of Force Profile and SPC reports.
- All reports can be exported to PDF file and many other types of file format.

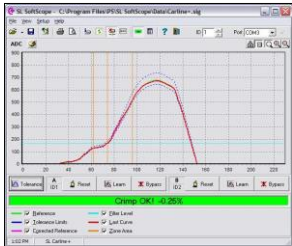
QUALITY & PROCESS EXPERT - Qpex
QUALITY CONTROL AT YOUR FINGERTIPS



Monitoring Functions

Individual crimping process is monitored for the following defects:

- Missing strands
- Wire not completely in the wire crimp
- Incorrect crimp height
- Strands outside terminal
- Incorrect wire gauge
- Missing terminal



Enhanced Analysis

In addition to the Area and Signature analysis, the following evaluations are included:

- Zone 1
- Zone 2
- Peak Force



HEADROOMwizard

- Headroom analysis has never been so easy, simply run the HEADROOMwizard and produce good and bad crimps. The wizard will calculate the headroom and relative dispersion automatically. A quick tool to determine whether the process can be monitored or not.

Technical Specifications:

- Channels: Single or double
- Trigger (Optional): Proximity
- Tolerance sets: 8
- Outputs: stop, clock, good & bad
- Inputs: learn & reset etc.
- Interface: USB for Barcode Scanner. Ethernet for connecting to QpNet
- Display: Colour LCD with Touchscreen
- Power supply: 12VDC, 15Watts
- Size (LxWxH): 140mm x 105mm x 50mm
- Weight: 600g

■ Specifications are subject to change without notice