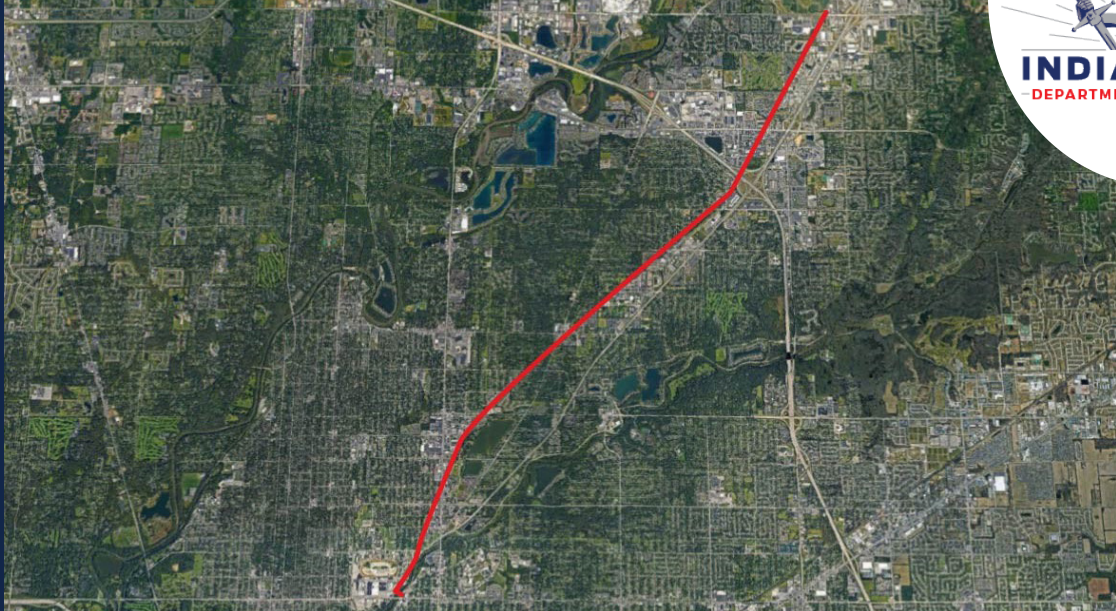


GT-06-001 NICKEL PLATE TRAIL



PROJECT DETAILS

The Nickel Plate Trail will convert the Nickel Plate Railroad bed to a Multi-Use Trail from 42nd & the Monon Trail, east to the existing Nickel Plate, north to 96th Street. The project includes multi-use spur connections at 62nd Street east to Eastwood Middle School and on 86th west to Sahm Park. Learn more at indy.gov/dpw.

PROJECT NUMBER: GT-06-001

PROJECT STATUS: In Design

ANTICIPATED CONSTRUCTION: Fall 2023 - Spring 2025

EST. CONSTRUCTION COST: Approx. \$14.9 Million

NEIGHBORHOODS: Millersville, Eastwood, Mayflower Meadows, Castleton, Vertland

FOR MORE INFORMATION

DPWEngineering@indy.gov

317-327-2656 • indy.gov/dpw

The Indianapolis Department of Public Works (DPW) continues to transform Indianapolis neighborhoods through the restoration of deteriorating thoroughfares, residential streets, sidewalks and bridges, as well as addressing neighborhood drainage and flooding issues. This investment continues to transform neighborhoods throughout Indianapolis.

These projects create local jobs and increase public safety for neighborhoods and residents, which supports DPW's commitment to make Indianapolis a more livable city.



Keep the Stormwater Clean and Flowing!

HOMEOWNER RESPONSIBILITIES

