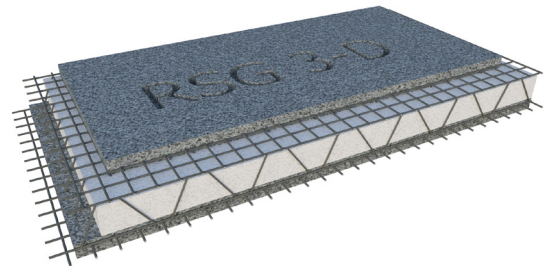




RSG 3-D Panel and Advanced Building System

Hutter-Pioneer has long sought advanced building materials to address common construction issues. We are excited to announce our "preferred partner" relationship with RSG 3-D, the manufacturer of the RSG 3-D Panel and Building System.

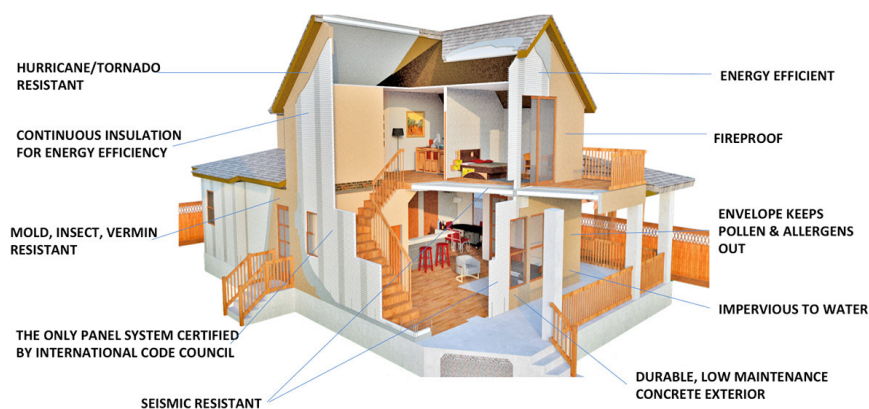
- Simpler, faster construction
- Lower cost versus inferior materials
- Reduces risks and contingencies
- Exceeds all codes



RSG 3-D Panel is globally known as the most sustainable and resilient building envelope. With recent cost increases to materials and labor, RSG 3-D is now, not just a better/stronger building, but a more affordable building solution - bringing profitability to projects that are not financially attractive with conventional wood-framing.

We believe RSG 3-D is the most advanced framing and building envelope we can offer our clients, ensuring the resilience, energy efficiency, durability and the healthfulness of their projects.

We also believe that a small crew can execute the construction of the Panel system very efficiently, saving days or weeks or your project.

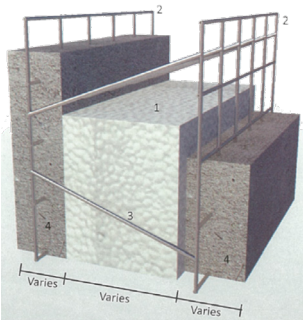


The RSG 3-D Panel & Building System is the only ICC Evaluated and Certified panel system (ICC ESR-2435).

Used in thousands of residential units (single and multifamily), commercial centers, offices and buildings for the US Department of Defense, University of California the 3-D Panel system has successfully built structures across a variety of climates, styles, functions and costs. Poplar Network named the RSG system "the new frontier of green, sustainable building materials."

MONOLITHIC BUILDING ENVELOPE – "Futureproof" protection for your family and community

RSG 3-D Panel and Advanced Building System



RSG 3-D Panel is a lightweight Panel consisting of continuous EPS insulation, incorporating a proprietary steel truss-system and welded wire fabric. The Panels are easily and rapidly framed. EMP roughs-in quickly and accurately. Then the Panels receive a field-applied concrete finish.

The Panel provides impressive strength and creates a “monolithic” building envelope. It accepts standard trusses and roof designs.

DEVELOPERS CAN EXPECT THE FOLLOWING BENEFITS:

- Reduced project risk
- Reduced labor time & cost
- Simplified framing
- Waste elimination
- Superior long-lasting results
- Greater ROI

INTERESTED IN LEARNING MORE ABOUT RSG 3-D PANELS?

Please feel free to contact Kevin Schumacher at 508-277-4863 to set a time to discuss how this process could be incorporated into your project and the additional advantages that the system offers.

KEVIN SCHUMACHER - PRESIDENT

kevin@hutter-pioneer.com

508.277.4863

