

WELCOME!

GRASSY CREEK REGIONAL PARK Phase 1 North

October 18, 2022



GRASSY CREEK PARK AGENDA

Welcome

Project Overview

‘What We Heard’

Proposed Design

- Concept Plan
- Phase I
- Environmental Community Center

Next Steps

Feedback and Engagement



AGENDA

Grassy Creek Regional Park | Indianapolis, IN | October 18, 2022



GRASSY CREEK PARK - PROJECT SCHEDULE

Working since January 2022

Public Meeting - February 16, 2022

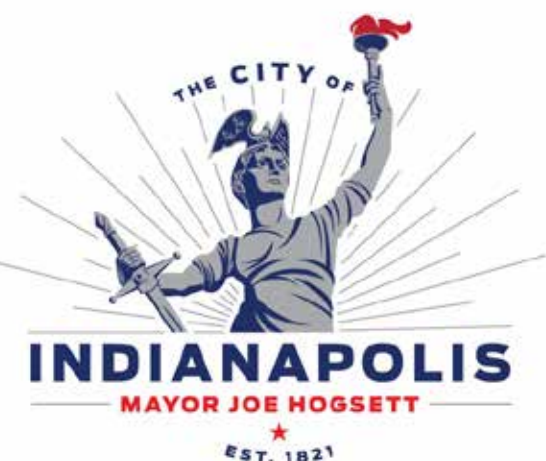
50% Design Documents Currently

Construction Documents | December

Bidding | January 2023

Construction Beginning 2023

Anticipated Opening Spring 2024



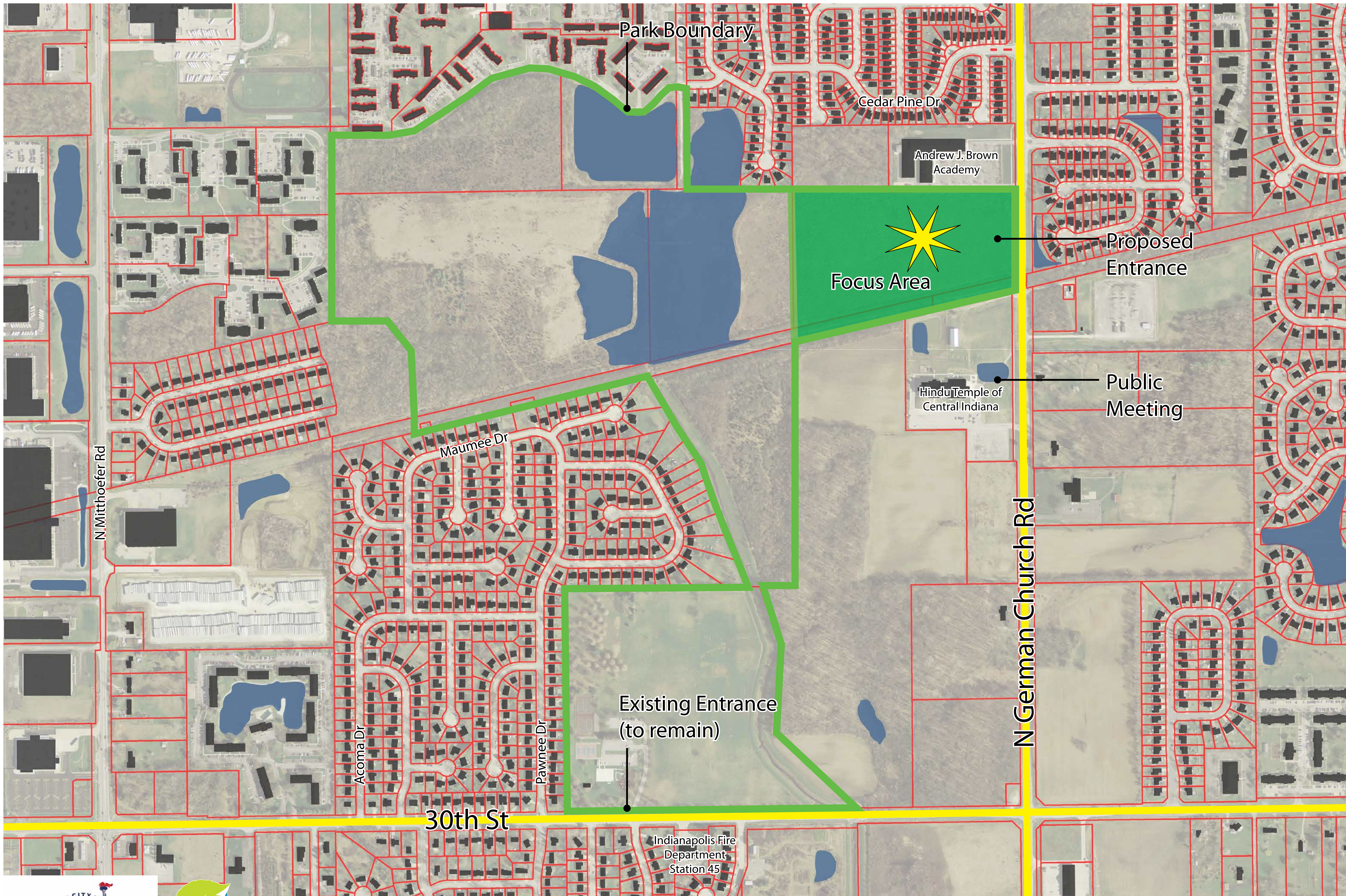
PROJECT SCHEDULE

Grassy Creek Regional Park | Indianapolis, IN | October 18, 2022

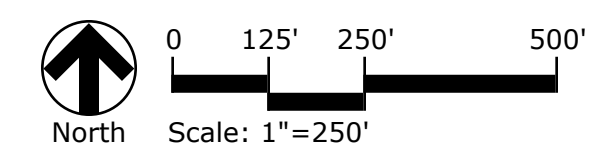


PROJECT OVERVIEW





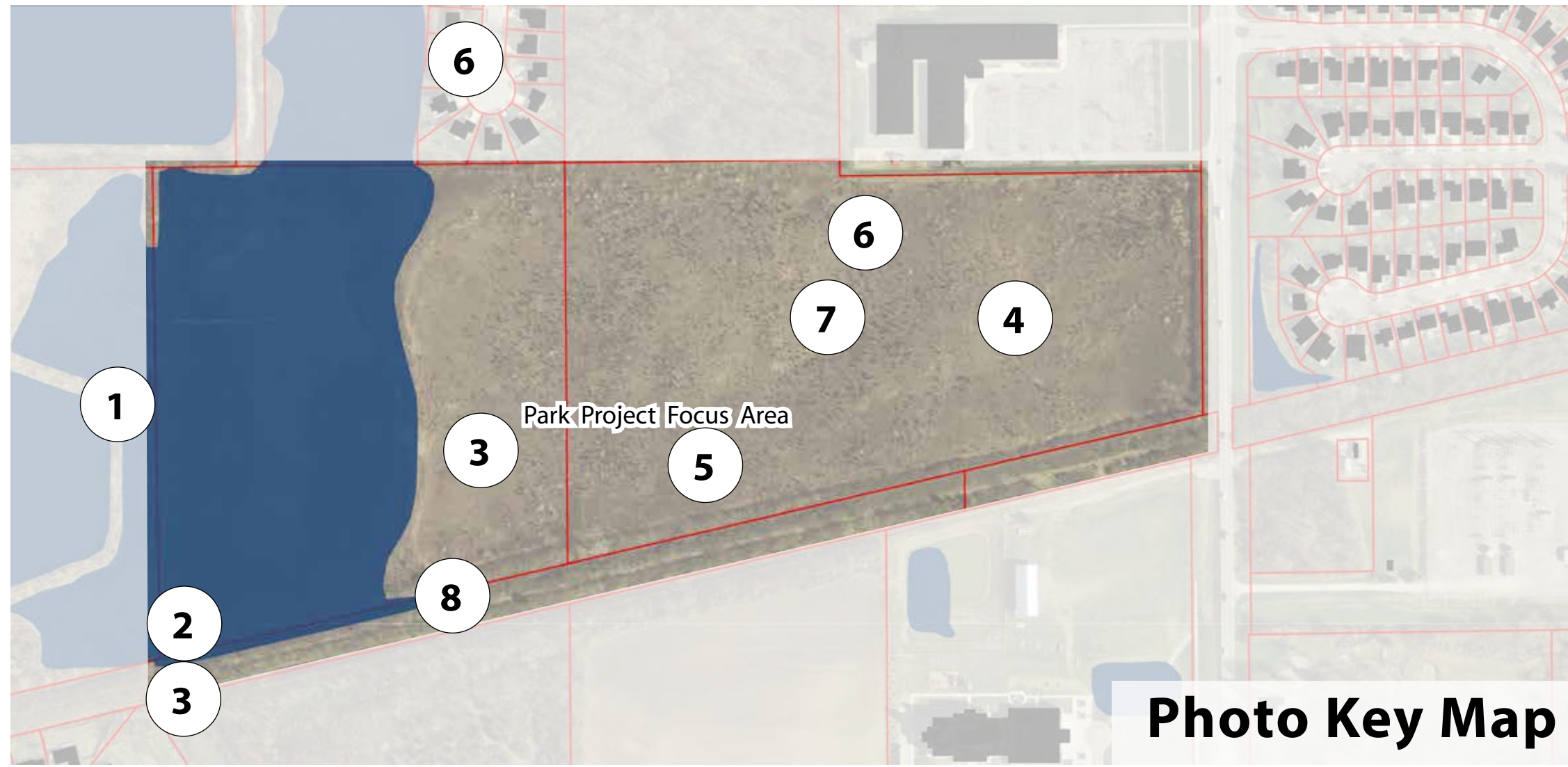
- LEGEND:**
- Parcels
 - Pond
 - Park Outline



GRASSY CREEK - NORTH PHASE 1

Grassy Creek Regional Park | Indianapolis, IN | October 18, 2022

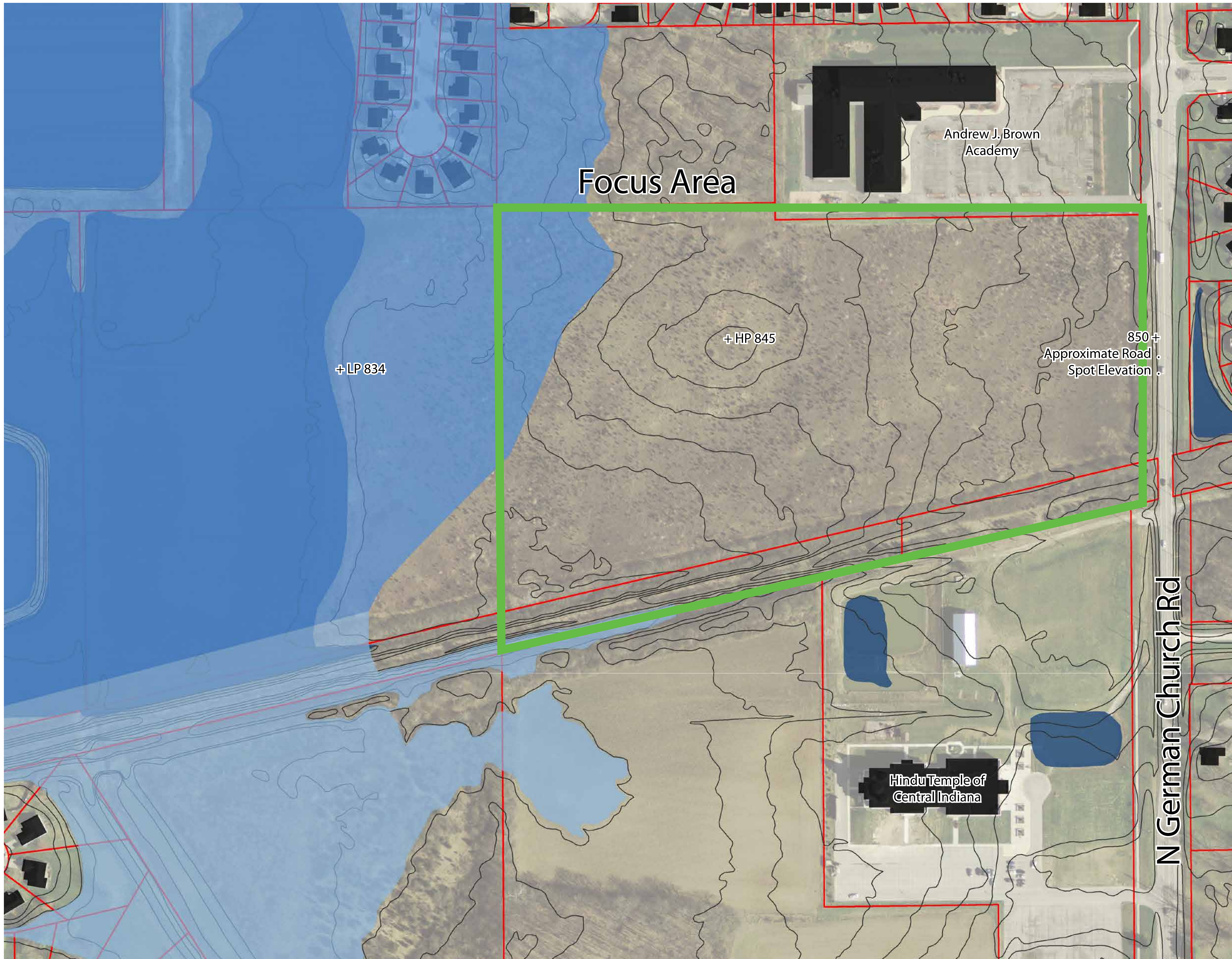




SITE PHOTOGRAPHY

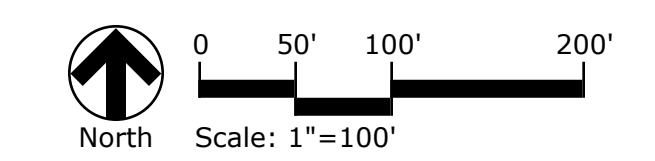
Grassy Creek Regional Park | Indianapolis, IN | October 18, 2022





LEGEND:

- Parcels
- Pond
- 1% Annual Chance Flood



NORTH PHASE 1 - FLOODING

Grassy Creek Regional Park | Indianapolis, IN | October 18, 2022



WHAT WE HEARD



WHAT WE HEARD

February 16, 2022

- Safety and Security
- On going maintenance and operations
- Zip Line for the Playground
- Minimize impact to wildlife
- Keep people from driving off road
- An open, airy building and structure that lets light through
- Sustainable design should be considered
- Provide flexible space sizes
- Building should connect to the park (visually and physically)
- The architectural should use the light and openness
- Bathroom access for weekends/after work hours
- Large and clearstory windows
- Make sure the glass is bird-safe!
- Be inspired by the site with textures and use



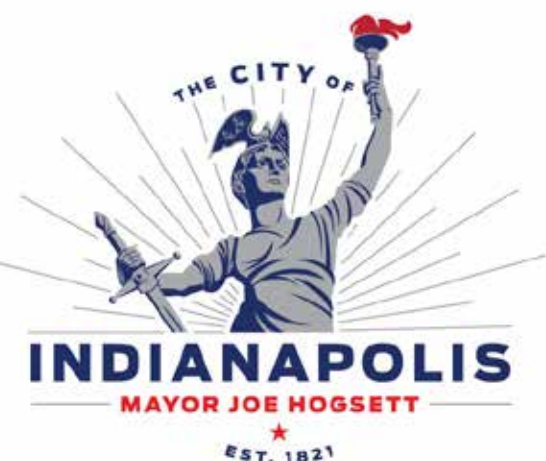
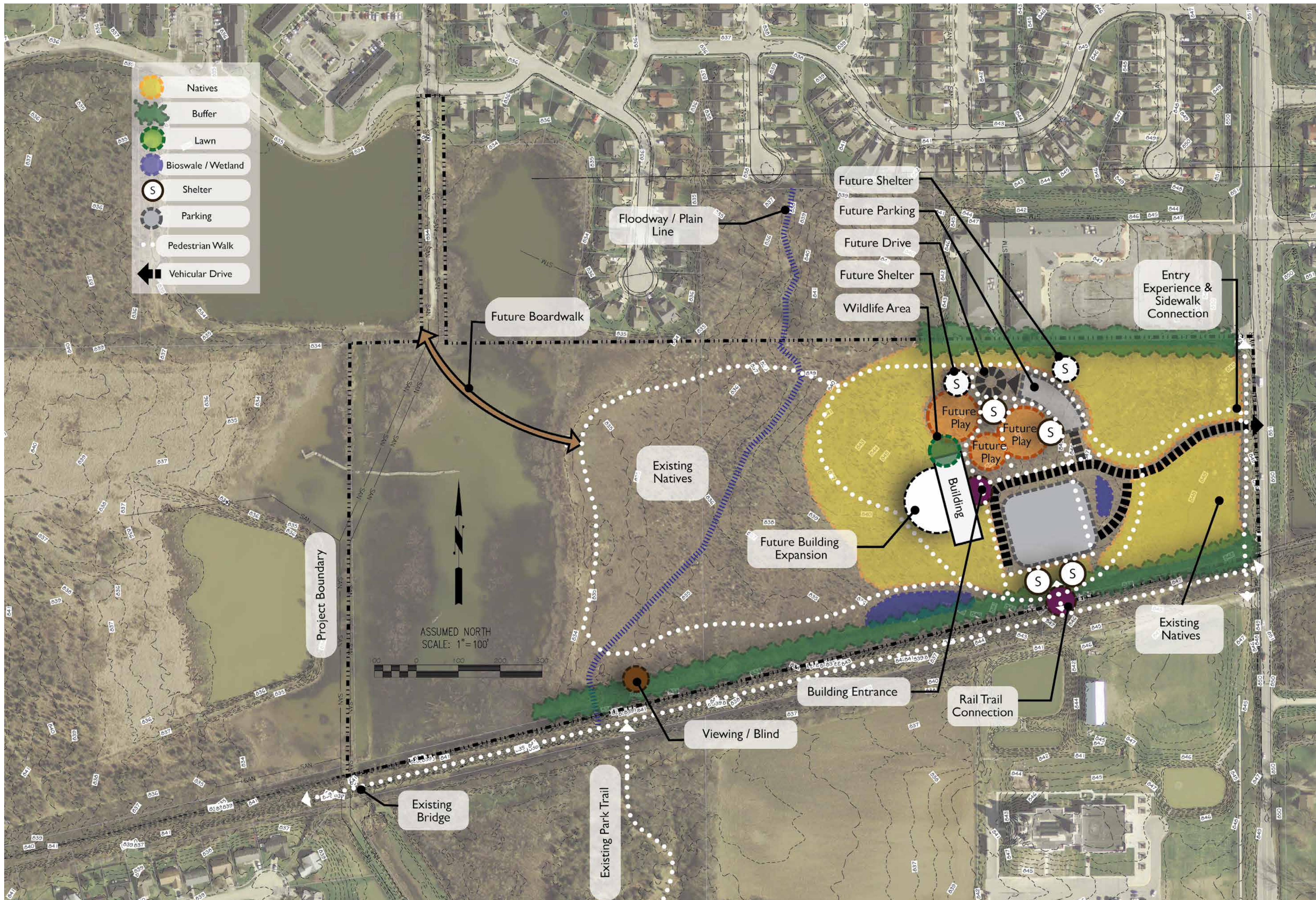
WHAT WE HEARD

Grassy Creek Regional Park | Indianapolis, IN | October 18, 2022



CURRENT PROGRESS





OVERALL CONCEPT PLAN

Grassy Creek Regional Park | Indianapolis, IN | October 18, 2022





Legend

- ① Environmental Community Center
- ② Service and Volunteers
- ③ Wildlife Viewing Area
- ④ Parking
- ⑤ Protect Existing Vegetation
- ⑥ Bioswales
- ⑦ Trail
- ⑧ Connection to the Rail-Trail
- ⑨ Arrival
- ⑩ Future Park Expansion
- ⑪ New Park Entrance



PHASE ONE

Grassy Creek Regional Park | Indianapolis, IN | October 18, 2022

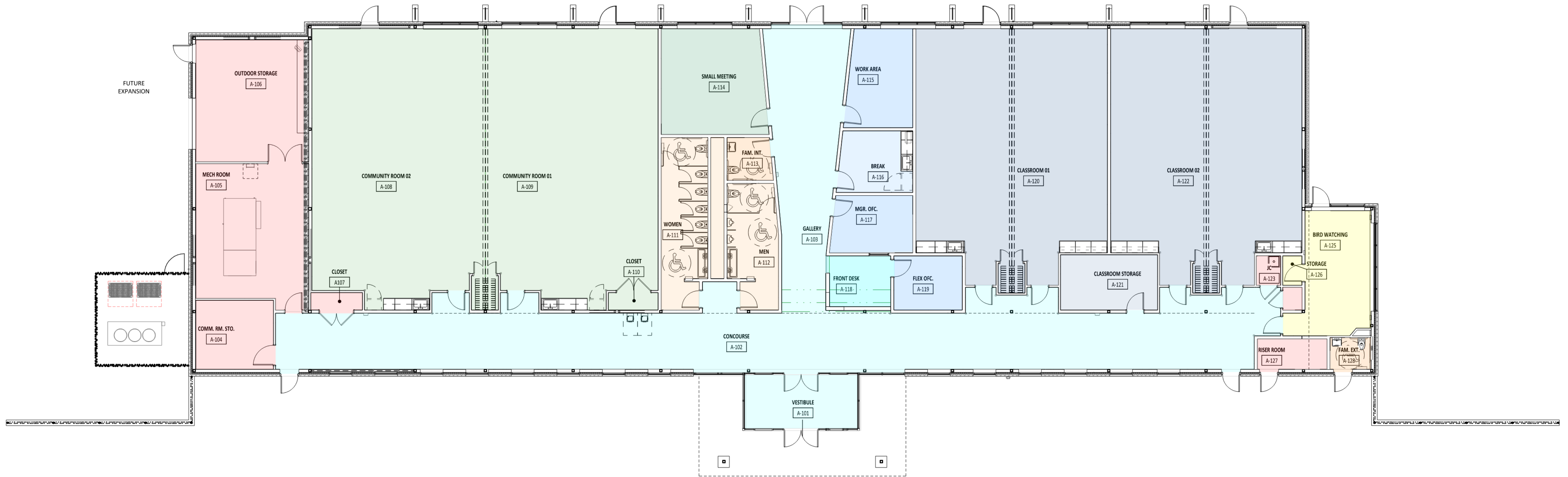




ENVIRONMENTAL COMMUNITY CENTER

Grassy Creek Regional Park | Indianapolis, IN | October 18, 2022





ENVIRONMENTAL COMMUNITY CENTER - PLAN

Grassy Creek Regional Park | Indianapolis, IN | October 18, 2022





ENVIRONMENTAL COMMUNITY CENTER

Grassy Creek Regional Park | Indianapolis, IN | October 18, 2022





INTERIOR VIEW - GALLERY

Grassy Creek Regional Park | Indianapolis, IN | October 18, 2022





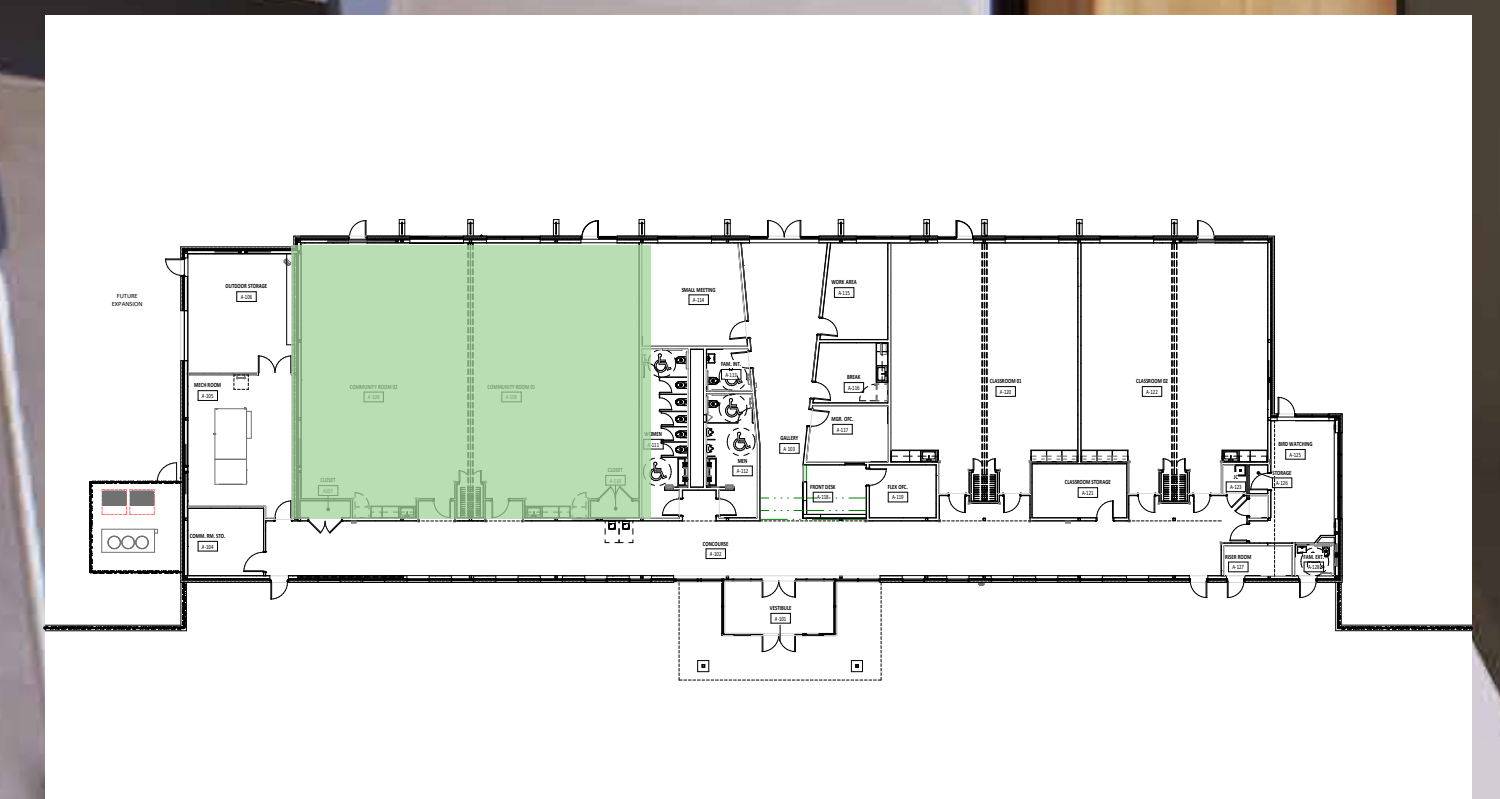
INTERIOR VIEW - MAIN CONCOURSE

Grassy Creek Regional Park | Indianapolis, IN | October 18, 2022





LOCATION



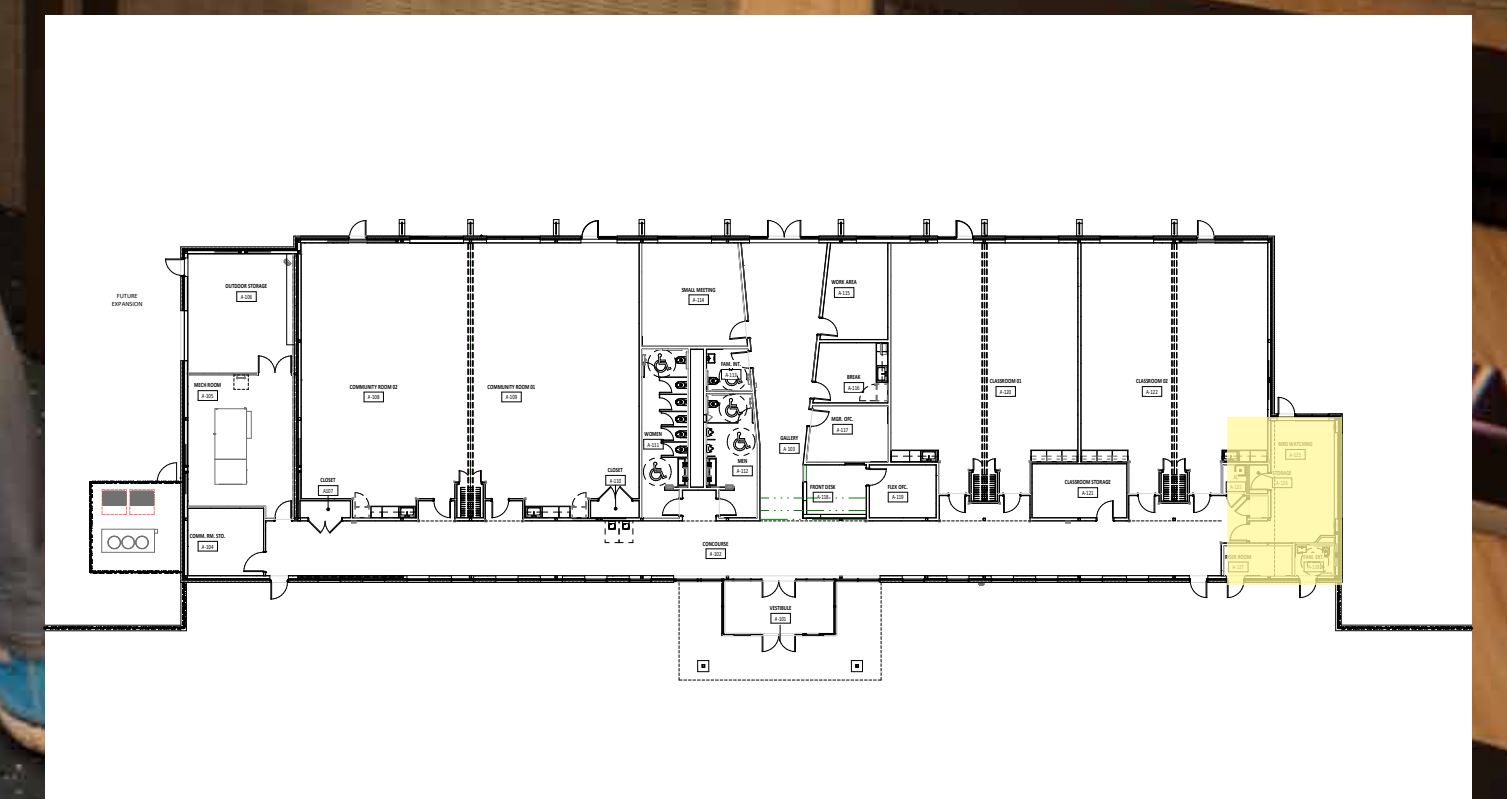
INTERIOR VIEW - COMMUNITY ROOM

Grassy Creek Regional Park | Indianapolis, IN | October 18, 2022





LOCATION



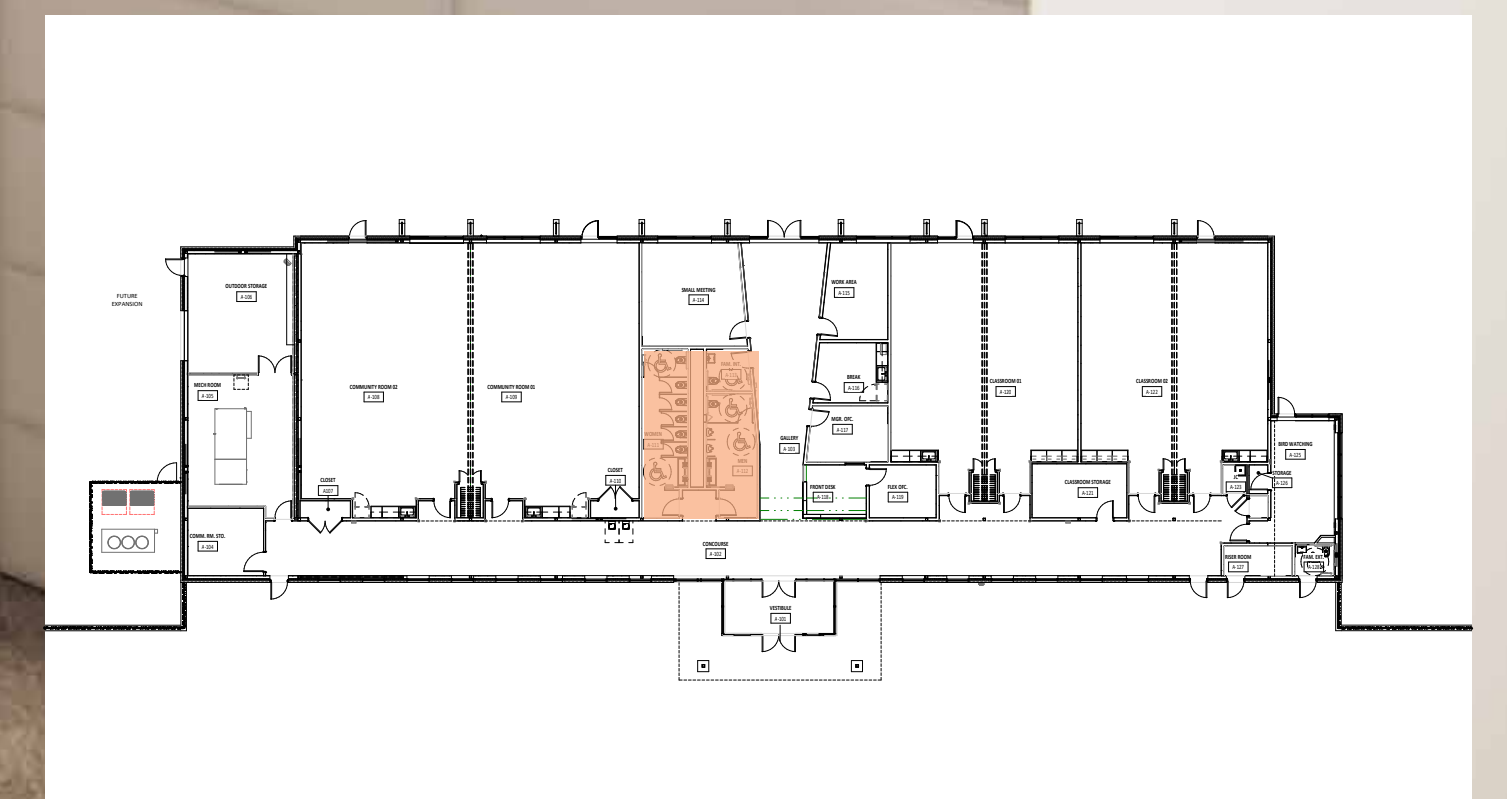
INTERIOR VIEW - WILDLIFE VIEWING

Grassy Creek Regional Park | Indianapolis, IN | October 18, 2022





LOCATION



INTERIOR VIEW - RESTROOM

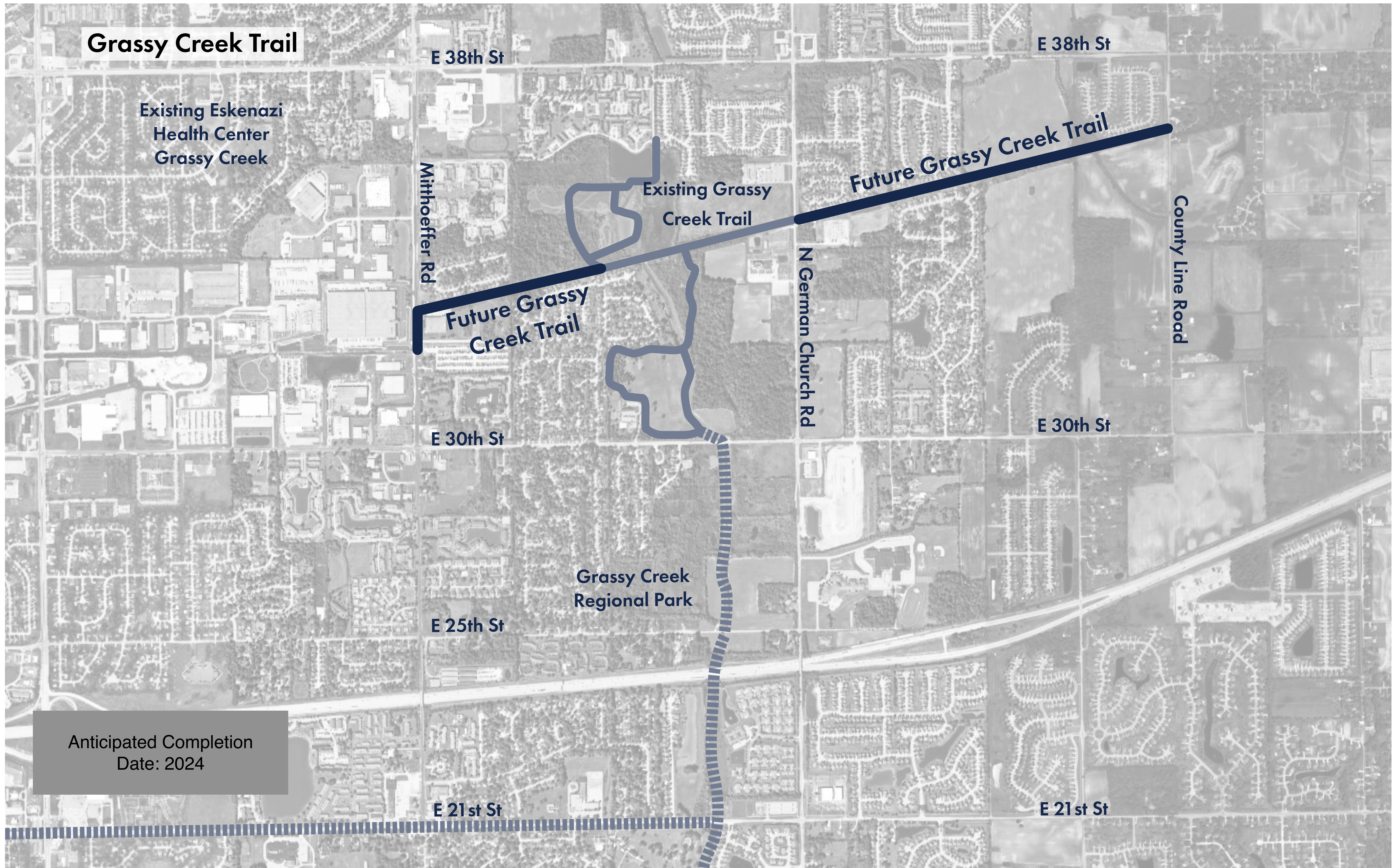
Grassy Creek Regional Park | Indianapolis, IN | October 18, 2022



GREENWAY PROJECT



Grassy Creek Trail



Grassy Creek Greenway Trail Grassy Creek Greenway Trail

Grassy Creek Regional Park | Indianapolis, IN | October 18, 2022



QUESTIONS OR COMMENTS?

Send any questions or comments to IndyParksCS@indy.gov

THANK YOU!

