

**2022-2023 RiverRenew  
Stakeholder Advisory Group**

**Meeting No. 3**

July 21, 2022

## Recap from May Meeting

- **Tunnel boring machine** update and journey
- Provided an update on **One Water Costs** in Alexandria
- Reviewed **Wayfinding Signage** in African American Heritage Park and at Pendleton St Site
- Tunnel Project **progress update**
- Tunnel Project **6-month look-ahead**
- **Community outreach** update

## Tonight's Presentation

- SAG Feedback
- Tunnel Project Update and Look-Ahead
- Community Listening Sessions recap
- Community Outreach Look-Ahead
- Major Takeaways
- Public Comment Period

# Virtual Meeting Best Practices

## Video

- **Camera turned on** for SAG members, when possible

## Audio

- **Microphones muted** unless speaking
- Avoid speaking over or interrupting each other (**see Ground Rules**)

## Participation

- Questions for **SAG members only** will be taken **after each section**
- Please use the **“Raise Hand”** button to ask a question
- Questions will be **answered in the order received**
- **Public comment** will be taken at the end of the meeting. Each speaker will be allotted **3 minutes**

# SAG Feedback



Review and **monitor construction/program progress**



**Communicate progress** to the community by leveraging existing networks



Identify concerns and **receive input** from the public



**Provide recommendations** regarding mitigation of construction impacts

# Tunnel Project Update

---

# RiverRenew Tunnel Project construction schedule.

Construction Staging Area	2021	2022	2023	2024	2025
AlexRenew	Grey, Dark Blue	Orange, Red	Pink	Blue	Green
Pendleton Street	Grey	Dark Blue	Orange, Blue	Pink, Blue	Green
Royal Street	Grey	Dark Blue	Orange, Blue, Pink	Blue	Green
Hooffs Run Interceptor					
Jamieson Avenue		Grey, Dark Blue, Blue, Green	Blue, Green, Hatched	Green	
AAHP		Grey, Dark Blue, Hatched	Green, Hatched		

Note: Schedule is generalized and subject to change



Site Preparation



Support of Excavation



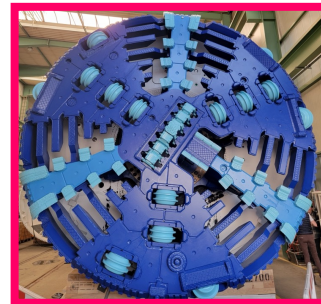
Excavation



Cut and Cover



Permanent Structures



Tunneling



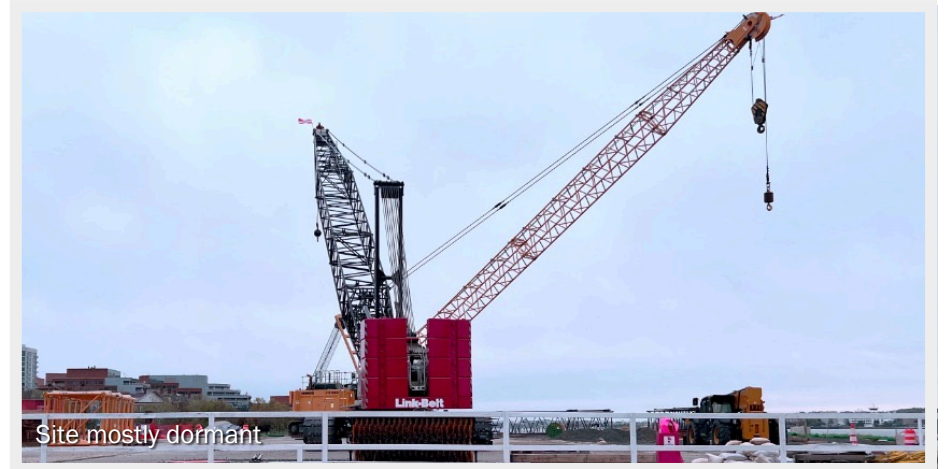
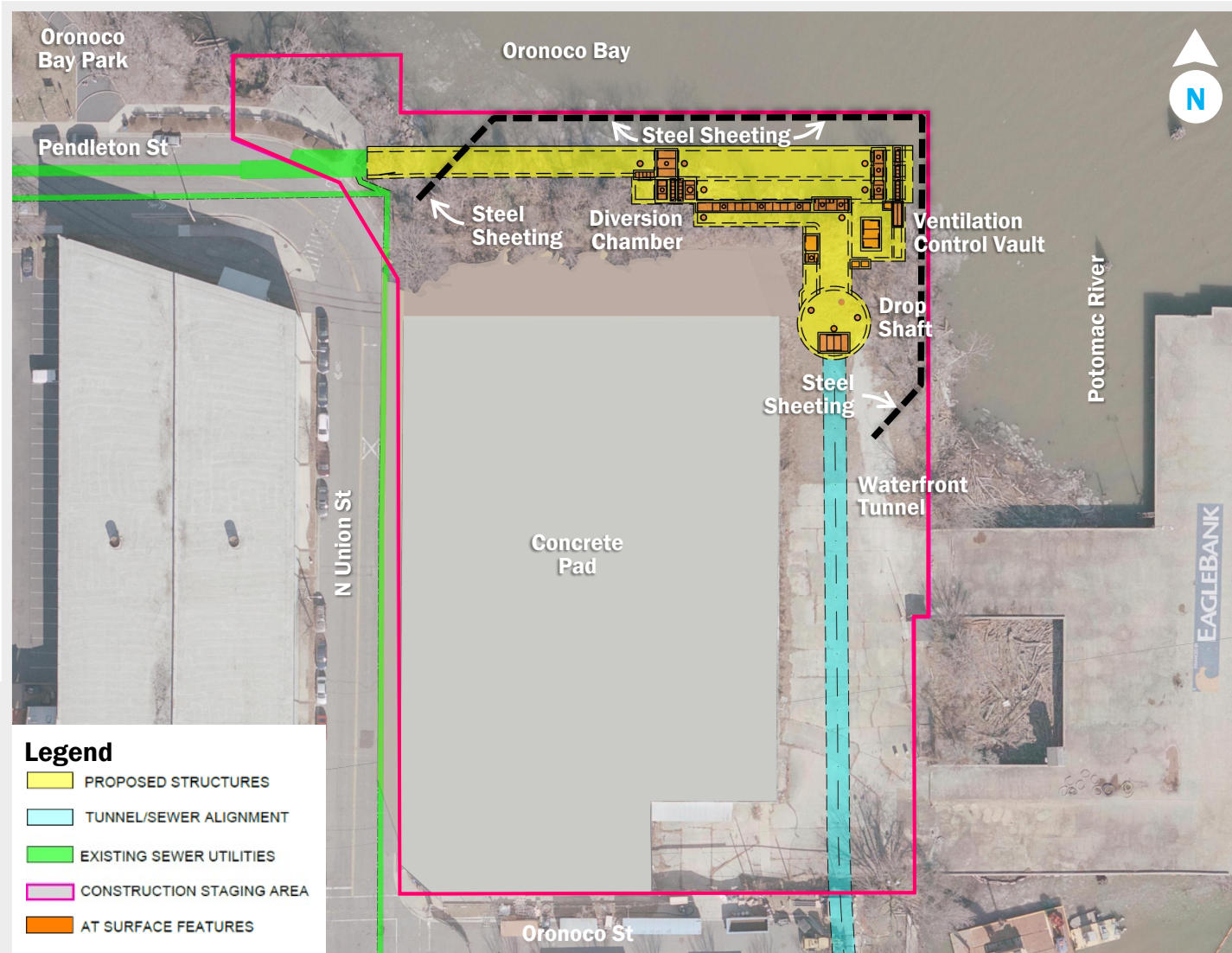
Restoration

# Summary of RiverRenew Tunnel Project noise variances with the City of Alexandria.

Site	Activity	Noise variance	Hauling	Dates
<b>Pendleton Street</b>	Shaft slurry walls	24/7 ( <b>11 days total</b> )	24/7 ( <b>11 days total</b> )	Aug 2022 – Dec 2022
	Shaft excavation	5 a.m. – 11 p.m. (Mon-Fri)	7 a.m. – 6 p.m. (Mon-Fri)	Dec 2022 – May 2023
	TBM removal	24/7	7 a.m. – 6 p.m. (Mon-Fri)	Oct 2023 – Dec 2023
<b>Royal Street</b>	Shaft slurry walls	24/7 ( <b>9 days total</b> )	24/7 ( <b>9 days total</b> )	Thru Aug 2022
	Shaft excavation	5 a.m. – 11 p.m. (Mon-Fri)	7 a.m. – 6 p.m. (Mon-Fri)	Sep 2022 – Dec 2022
<b>AlexRenew</b>	Shaft excavation	6 a.m. – 2 a.m. (Mon-Fri)	7 a.m. – 6 p.m. (Mon-Fri)	Thru Aug 2022
	Tunnel construction	24/7	7 a.m. – 6 p.m. (Mon-Fri)	Aug 2022 – Oct 2023



# Pendleton Street Site design and construction update.



## Design Progress

Actual Planned As of June 30, 2022



## Construction Progress

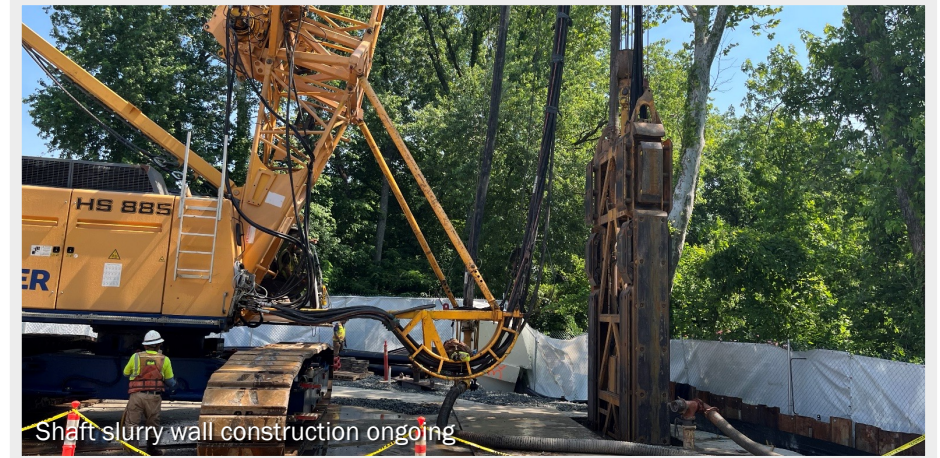
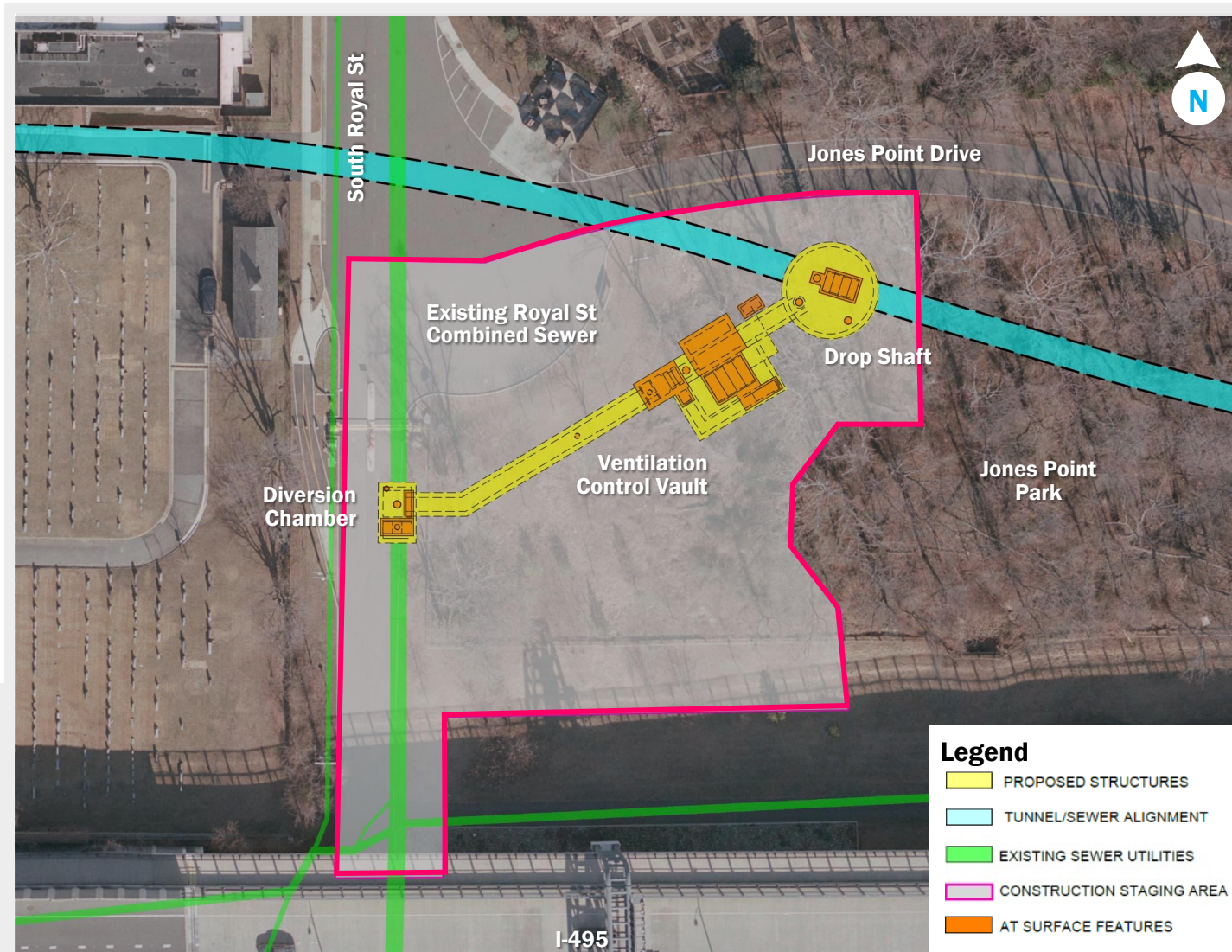


## Major Activities

- Preparing site for backfill
- Site mostly dormant until shaft construction begins in Aug 2022



# Royal Street Site design and construction update.



## Design Progress

■ Actual ▨ Planned As of June 30, 2022



## Construction Progress



## Major Activities

- Shaft slurry wall construction ongoing
- Bathtub panels completed

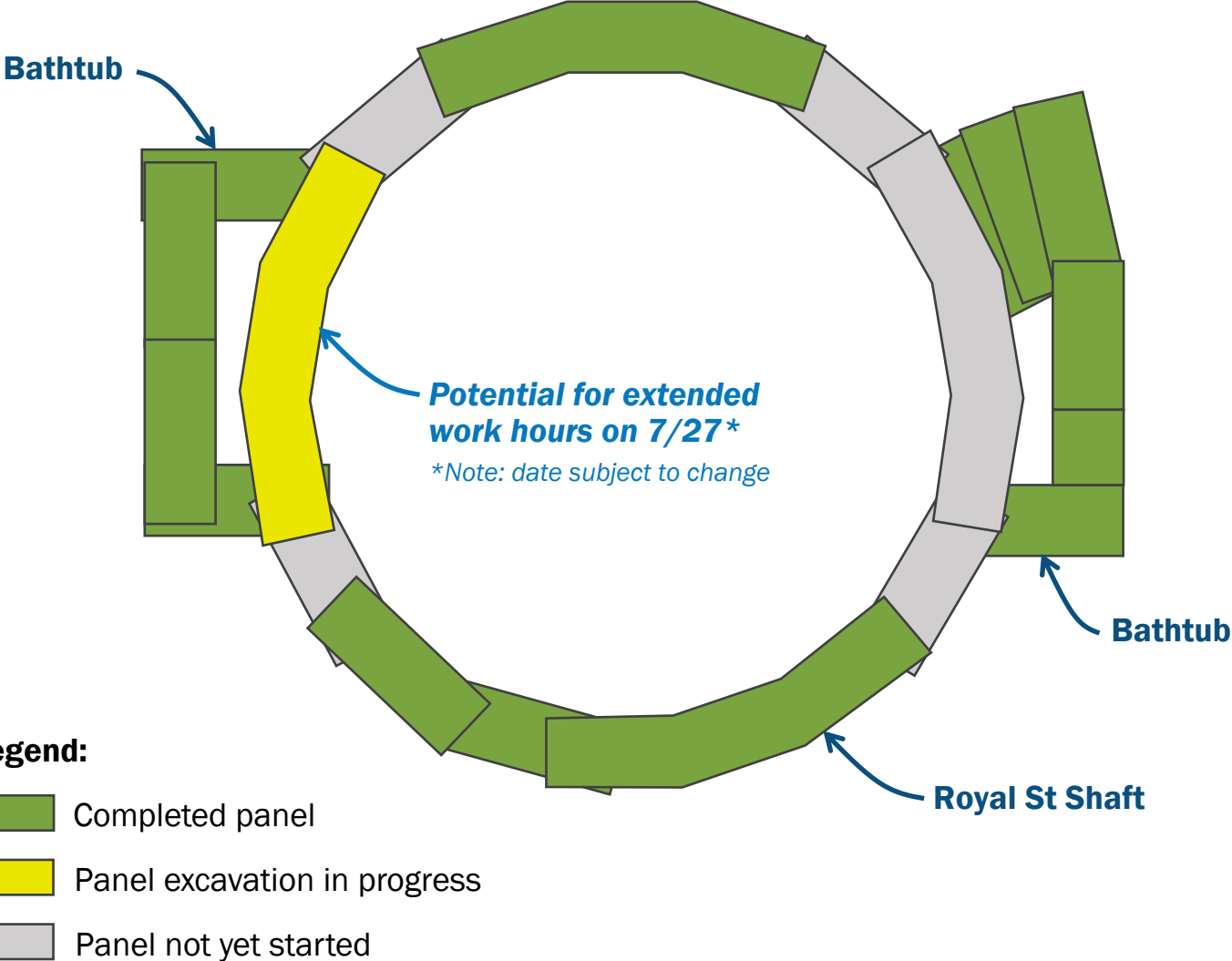
# Shaft slurry wall progress at Royal Street.



3,500+ cubic yards (~438 trucks)  
Concrete placed to-date



113,000+ pounds (57+ tons)  
Rebar installed to-date





# Heads Up!

Extended work hours on July 27\* at the Royal Street site.

\*Timing of extended work hours is subject to change pending concrete availability.



RiverRenew crews are busy constructing shaft slurry walls at the **ROYAL STREET** site as part of our mission to prevent millions of gallons of combined sewage from polluting local waterways each year.

To complete this important work, crews will be working extended hours on July 14 to accommodate the placement of approximately 500 yards of concrete that will form sturdy temporary shaft walls.

### What you can expect:

- Crews working within the fenceline at the end of South Royal Street outside of normal work hours (7 a.m. to 6 p.m.)
- Concrete delivery outside of normal work hours
- About 60 trucks over the course of the work day along South Royal, Franklin, and Gibbon Streets

Please note that this work is permitted through the City of Alexandria and necessary to accommodate these large concrete pours to keep us on schedule.

We greatly appreciate your patience as we built toward healthier waterways for Alexandria. Email us at [askriverrenew@alexrenew.com](mailto:askriverrenew@alexrenew.com) or call the construction hotline at 1.800.234.6592 with any questions.

Sign-up for alerts at [riverrenew.com/construction/alerts](http://riverrenew.com/construction/alerts) so we can keep you up to date on important project updates and notifications.



# Flyers distributed for extended work hours at Royal Street Site

Haul routes are subject to review and approval by the City of Alexandria

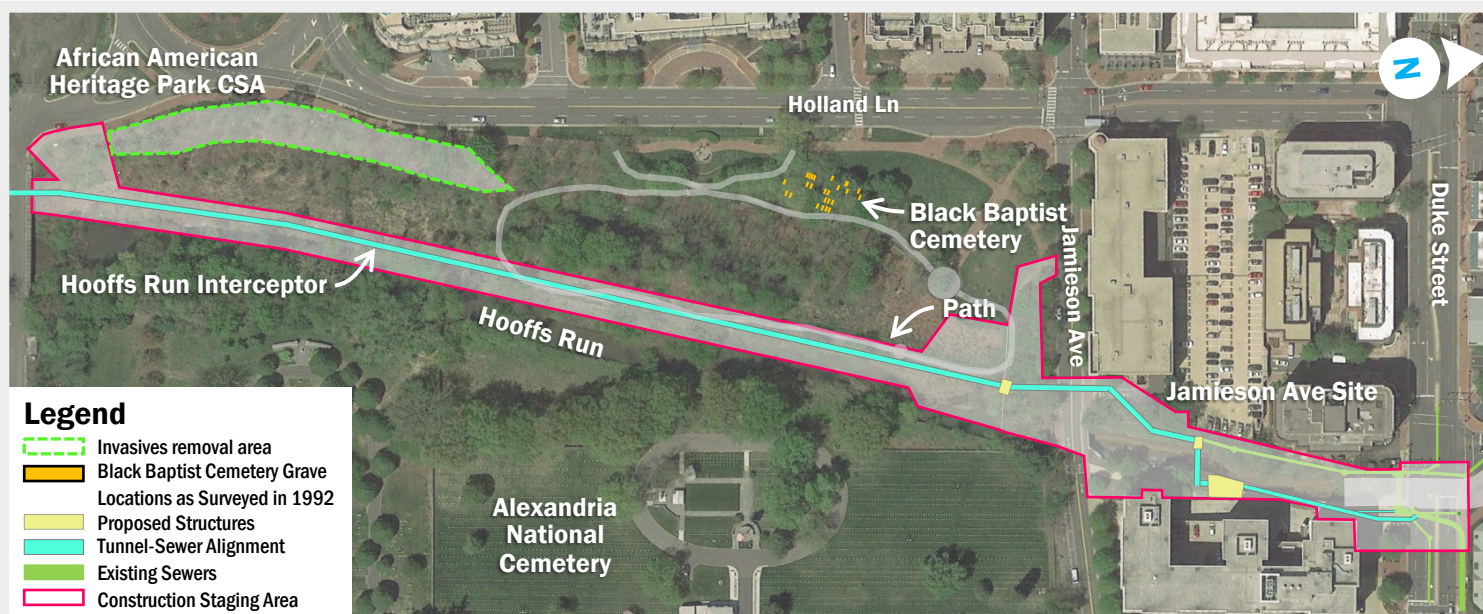


## LEGEND

- Inbound/Outbound Route
- Outbound Route
- Inbound Route
- Royal Street CSA
- Properties for Flyer Distribution



# Hooffs Run Interceptor design and construction update.

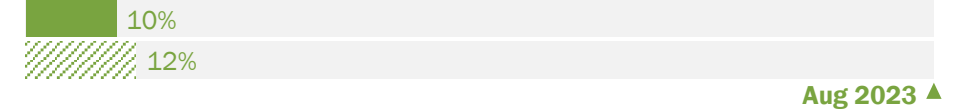


## Design Progress

■ Actual ▨ Planned As of June 30, 2022



## Construction Progress



## Major Activities

- Diversion chamber excavation started
- Outfall 003 extension sewer excavation started
- African American Heritage Park Site support of excavation started

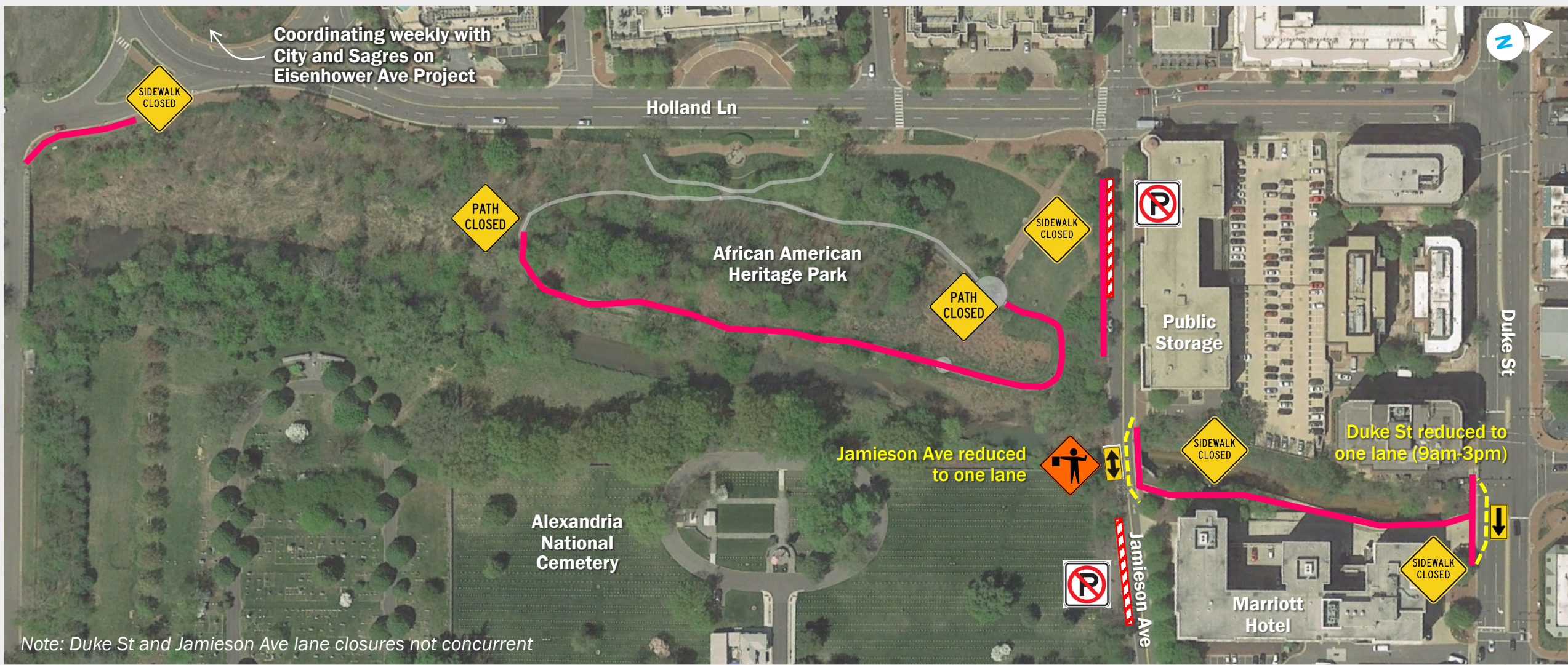


◀ African American Heritage Park Site

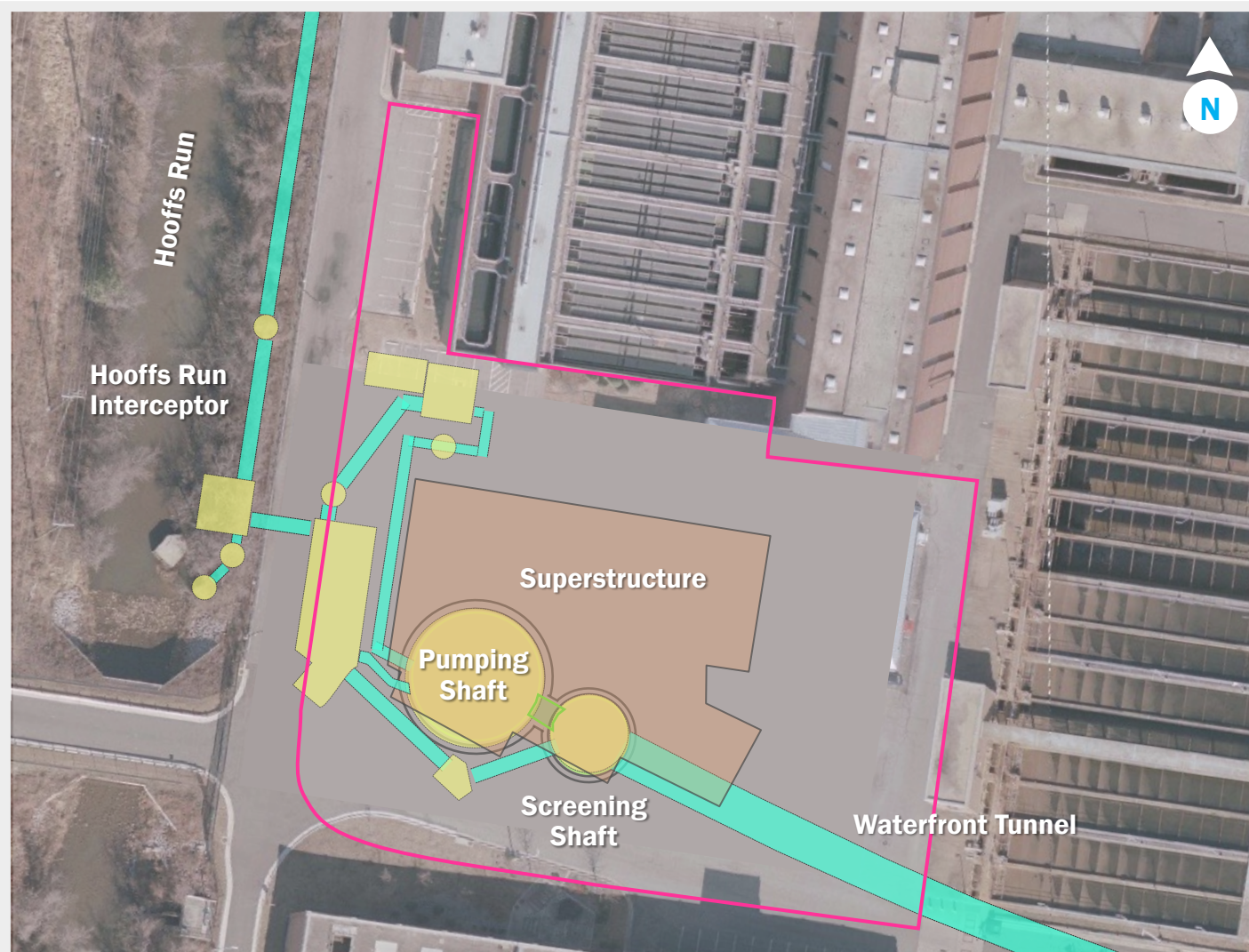


◀ Jamieson Avenue Site

# Managing Hooffs Run Interceptor construction impacts. Road and sidewalk impacts through August 2023.



# AlexRenew design and construction update.



## Design Progress

■ Actual ▨ Planned As of June 30, 2022



## Construction Progress



## Major Activities

- Shaft slurry walls completed
- Depressurization well installation completed
- Screening Shaft excavation nearing completion
- Pumping Shaft excavation ongoing

# Alexandria welcomed our healthier waterways heroine on July 14, 2022.



## HELLO HAZEL. THE PERSON BEHIND THE NAME!

**Meet Hazel Johnson.**

Hazel. Such a sweet name for such powerful technology — and for good reason. This 380-ton tunnel boring machine got its name from another environmental powerhouse: Hazel Johnson.

Hazel dedicated her life to fixing ecological issues in her Chicago community. After all, she witnessed the negative impacts that environmental waste and toxicity can have firsthand — losing her husband to cancer and watching her family endure health concerns stemming from exposure to hazardous fumes, asbestos, and contaminated drinking water in her neighborhood. She believed that all people and all communities deserve access to a clean environment and clean water, regardless of ethnicity, social standing, or economic status. She fought tirelessly for these ideals, founding People for Community Recovery and being posthumously nominated for a Congressional Gold Medal.

While Hazel is no longer with us, her fighting spirit is still going strong across the country.

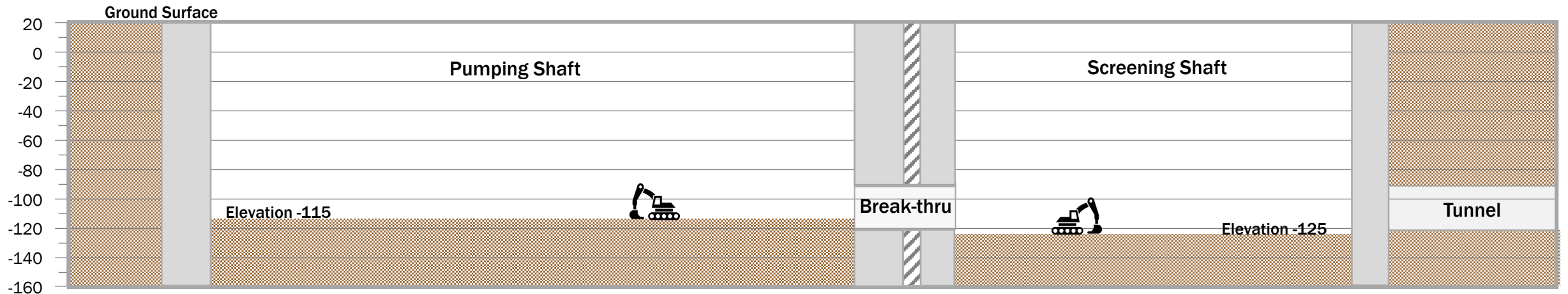
Today, we're simply proud that Hazel's vision for environmental justice is having a positive impact right here in Alexandria.

**Why do we name TBMs?**  
In honor of St. Barbara, a patron saint thought to bring good luck to engineers and miners who work underground, tunnel boring machines are typically named after influential women.

**Alexandria weighs in.**  
In the 2021 TBM naming campaign, about 500 Alexandrians spoke up and voted for their favorite of six TBM namesakes. With over 23% of the vote, Hazel clearly won our city's heart.



# AlexRenew shaft excavation progress.



Note: Horizontal scale exaggerated




A high-angle, wide shot looking down into a massive, circular concrete shaft under construction. The shaft's interior walls are a light tan color, showing horizontal construction layers and some orange spray-painted markings. At the top of the shaft, a large yellow lattice crane is visible against a clear blue sky. A worker in a blue safety harness is positioned on a blue aerial lift platform, which is suspended from a network of steel cables. The lift is positioned near a large, dark, cylindrical pipe that extends from the top edge of the shaft. In the foreground, the dark blue metal structure of a piece of heavy machinery is partially visible. The overall scene conveys a sense of large-scale industrial engineering.

# Tunnel Project Look-Ahead

---

Tunnel umbilical installation in Screening Shaft at AlexRenew

# Major construction activities in the next 6 months at Pendleton St.

Aug	Sep	Oct	Nov	Dec	Jan
Guide Walls	Slurry Setup	Shaft Slurry Wall Construction		Excavation	
 <p>7a.m.–6p.m. Mon–Fri</p> <p>No anticipated impacts to sidewalks, bicycle routes, or travel lanes</p> <p>15 trucks/day</p> <p>Construct Shaft Guide Walls</p>	 <p>7a.m.–6p.m. Mon–Fri</p> <p>No anticipated impacts to sidewalks, bicycle routes, or travel lanes</p> <p>10 trucks/day</p> <p>Setup Site for Shaft Slurry Walls</p>	 <p> 7a.m.–6p.m. Mon–Fri</p> <p>No anticipated impacts to sidewalks, bicycle routes, or travel lanes</p> <p>75 trucks/day</p> <p>Shaft Slurry Wall Construction</p>	 <p> 7a.m.–6p.m. Mon–Fri</p> <p>No anticipated impacts to sidewalks, bicycle routes, or travel lanes</p> <p>70 trucks/day</p> <p>Shaft Excavation</p>		






Note: Pictures representative of upcoming construction work



Variance (see slide 7)

# Major construction activities in the next 6 months at Royal St.

Aug	Sep	Oct	Nov	Dec	Jan
Shaft Slurry Walls	Shaft Excavation			Near Surface Structures Support of Excavation	
 <p><b>!</b> 7am-6pm Mon-Fri</p> <p>Temporary impacts to traffic in cul-de-sac and bike path</p> <p>75 trucks/day</p> <p><b>Construct Shaft Slurry Walls</b></p>	 <p><b>!</b> 7am-6pm Mon-Fri</p> <p>No anticipated impacts to sidewalks, bicycle routes, or travel lanes</p> <p>70 trucks/day</p> <p><b>Shaft Excavation</b></p>	 <p>7am-6pm Mon-Fri</p> <p>No anticipated impacts to sidewalks, bicycle routes, or travel lanes</p> <p>20 trucks/day</p> <p><b>Near Surface Structures Support of Excavation</b></p>			






Note: Pictures representative of upcoming construction work



Variance (see slide 7)

# Major construction activities in the next 6 months at Jamieson Avenue.

Aug	Sep	Oct	Nov	Dec	Jan
Diversion Chamber		Open-Cut		Diversion Chamber and Junction Chamber	
					
7am-6pm Mon-Fri		7am-6pm Mon-Fri		7am-6pm Mon-Fri	
Lane and sidewalk closures: Duke St and Jamieson Ave		Lane and sidewalk closures: Duke St and Jamieson Ave		Lane and sidewalk closures: Duke St and Jamieson Ave	
30 trucks/day		10 trucks/day		30 trucks/day	
Diversion Chamber Construction		Open-Cut Construction		Diversion Chamber and Junction Chamber Construction	



Note: Pictures representative of upcoming construction work

# Major construction activities in the next 6 months at African American Heritage Park.

Aug	Sep	Oct	Nov	Dec	Jan
-----	-----	-----	-----	-----	-----

Junction Chamber Construction

Open Cut and Manhole Construction



**7am-6pm**  
Mon-Fri

**7am-6pm**  
Mon-Fri

Sidewalk closures (intermittent):  
Jamieson Ave, Holland  
Parking restrictions (24/7): Jamieson  
Path closures (24/7): AAHP

Sidewalk closures (intermittent):  
Jamieson Ave, Holland  
Parking restrictions (24/7): Jamieson  
Path closures (24/7): AAHP

**30 trucks/day**


**30 trucks/day**

**Junction Chamber Construction**

**Open Cut Construction**



# Major construction activities in the next 6 months at AlexRenew.

 Variance (see slide 7)



Waterfront Tunnel

7a.m.–6p.m.  
Mon–Fri

50 trucks/day



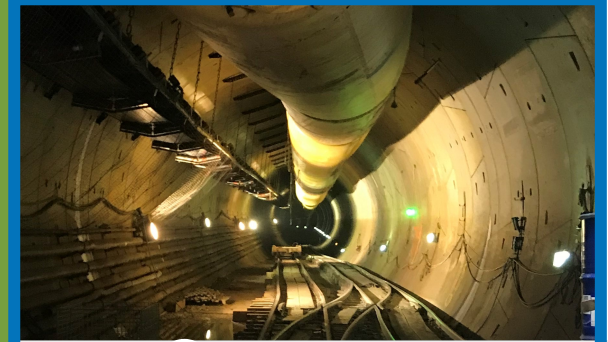
7a.m.–6p.m.  
Mon–Fri


50 trucks/day



7a.m.–6p.m.  
Mon–Fri

30 trucks/day



 24 hours/day  
7 days/week (Hauling 7a.m.–6p.m.)

120 trucks/day

Assemble and Lower Tunnel Boring Machine

TBM Initial Drive

Install Vertical Conveyor

Tunneling

Aug

Sep

Oct

Nov

Dec

Jan

Near Surface Struct. Support of Excavation

Microtunneling

Permanent Concrete Structures



Hooffs Run Interceptor & Pumping Station

7a.m.–6p.m.  
Mon–Fri

50 trucks/day



7a.m.–6p.m.  
Mon–Fri

50 trucks/day

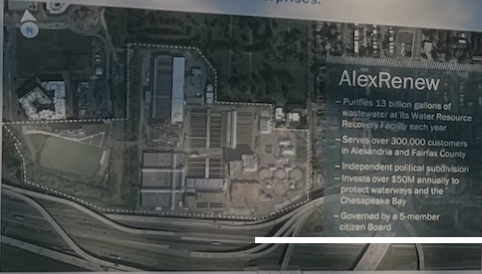


7a.m.–6p.m.  
Mon–Fri

30 Trucks/day

# Community Outreach

Overview of Alexandria Renew Enterprises.



**AlexRenew**

- Purifies 1.3 billion gallons of wastewater at its Water Resource Recovery Facility each year
- Serves over 300,000 customers in Alexandria and Fairfax County
- Independent political subdivision
- Invests over \$50M annually to protect watersheds and the Chesapeake Bay
- Governed by a 5-member citizen Board

Alexandria, VA is served by both separate and combined sewer systems.



Each year, 540 million gallons of combined sewage pollution are reported to watersheds from four distinct areas.



# Community Listening Sessions held July 11–14 engaged a wide audience across all construction sites.



**AlexRenew**  
July 13  
Attendees: 1



**Hooffs Run Interceptor**  
July 14  
Attendees: 30



**Royal Street**  
July 14  
Attendees: 20

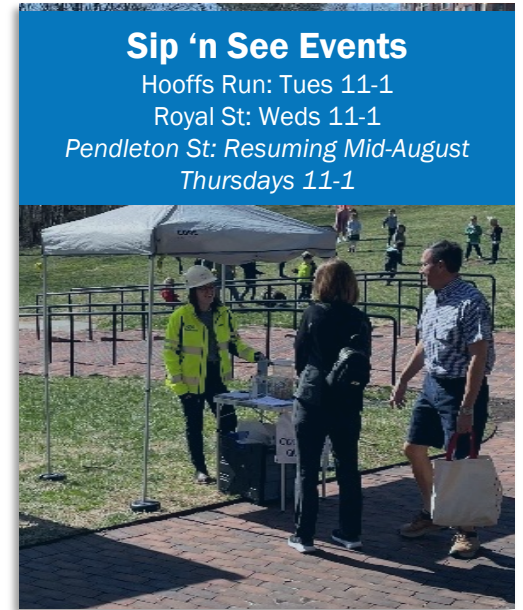
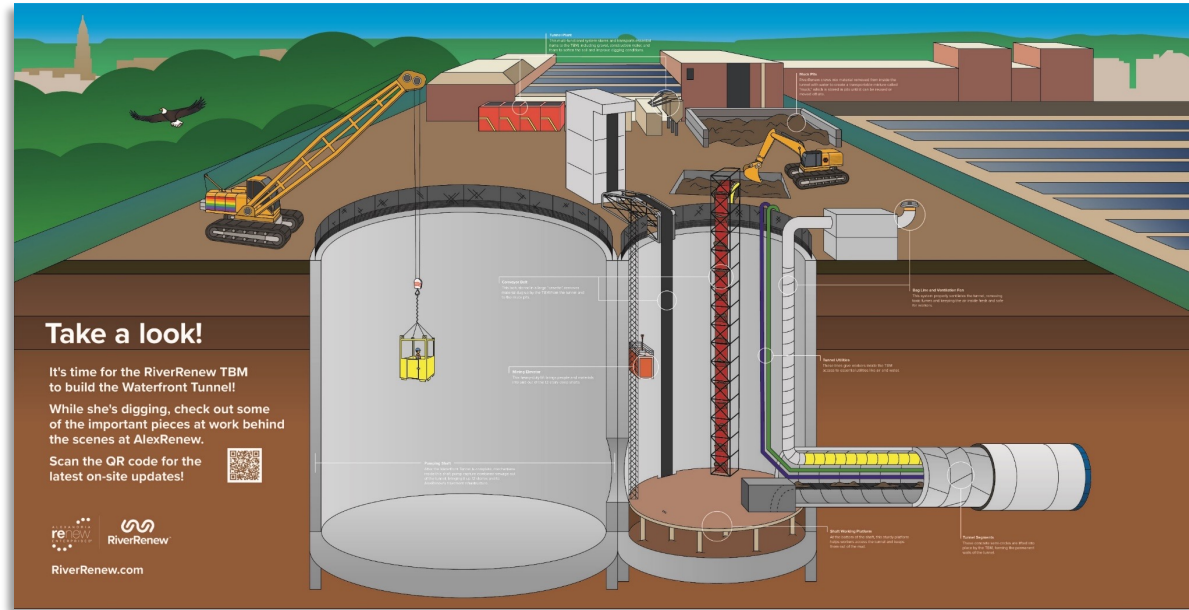


**Pendleton Street**  
July 11  
Attendees: 50





# Upcoming community outreach.



**2022-23 Stakeholder Advisory Group Meeting**

- September 15



# Meeting Takeaways

- Summary of active and upcoming noise variances for Pendleton St, Royal St, and AlexRenew sites
  - Shaft slurry wall excavation ongoing at Royal Street Site
    - *Extended work hours communicated via social media, website alerts, and flyer distribution*
  - Sidewalk and path impacts at AAHP ongoing
  - Duke Street and Jamieson Avenue lane closures ongoing
  - Shaft excavation nearing completion at AlexRenew
  - Tunnel Boring Machine getting ready for action!
-

# Public Comment Period

Healthier waterways start here.  
See something, say something – reach out with construction concerns at  
extension 2100 or [HeadsUp@alexrenew.com](mailto:HeadsUp@alexrenew.com)

Healthier waterways start here.  
See something, say something – reach out with construction concerns at  
extension 2100 or [HeadsUp@alexrenew.com](mailto:HeadsUp@alexrenew.com)



**RiverRenew**<sup>TM</sup>

INVESTING IN HEALTHIER WATERWAYS FOR ALEXANDRIA