



Evergreen
Developments Group

FORBES NAMED NORTH CYPRUS NO. 1 DESTINATION FOR BUYING BEACHFRONT PROPERTIES IN 2021



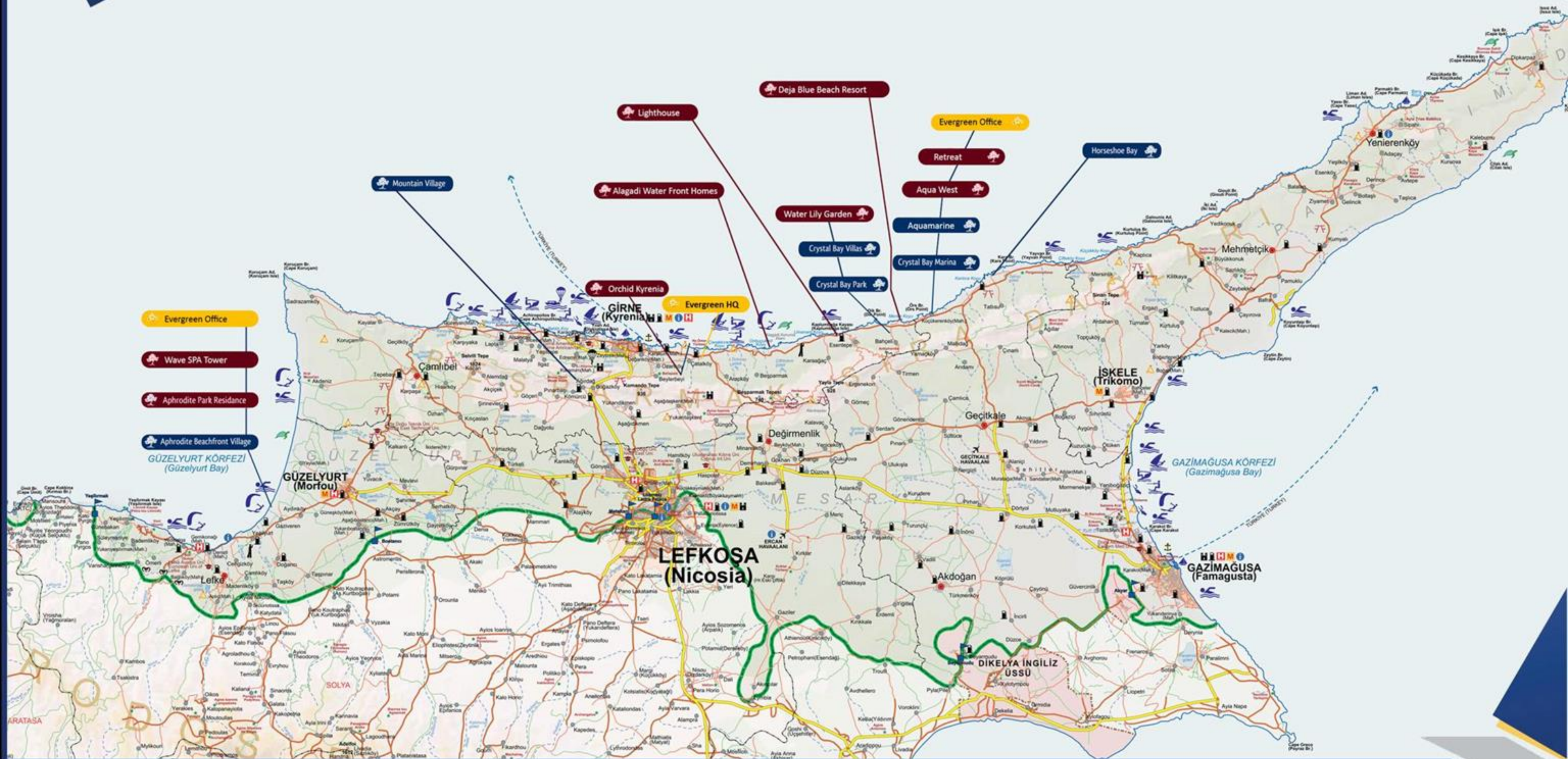
"IF YOU'RE UP FOR AN ADVENTURE AT THIS STAGE OF YOUR LIFE
WHILE STRETCHING YOUR RETIREMENT BUDGET TO BUY A BONA-FIDE LUXURY STANDARD OF LIFE
ON ONE OF THE WORLD'S MOST BEAUTIFUL STRETCHES OF COASTLINE,

NORTHERN CYPRUS SHOULD BE AT THE TOP OF YOUR LIST"

Excellence is in our nature...

Established in 2003, Evergreen Developments Group specializes in creating refined, luxury properties in prime locations in North Cyprus, with the emphasis on lifestyle to enhance your holiday experience and investment opportunities. Evergreen has delivered over 2000 properties within 33 quality developments and more exciting products to come with over 1905 units in next 5 years consisting of bungalows, villas and apartments on the North Coast of Cyprus, to the East & West of Kyrenia City, as well as the sought-after region of Bellapais. Known as the trailblazers in property development in North Cyprus, Evergreen is focused on providing an incomparable lifestyle experience with our Spas, a la carte Restaurants, Beach Bars, Surf School, Nature Trails and unsurpassed Management and Letting Programs.





PRESENTING PHASE 5: APHRODITE WELLNESS & ANTI AGING RESORT

WELLNESS



WELLNESS



| APHRODITE WELLNESS

A place to grow younger and healthier...

We are proud to present to you our seafront resort situated on the longest beach coastline on the island, stretching for 36 kilometers. This ambitious beachfront project includes a total of 604 units, offering a selection of studio, 1-bedroom & 2-bedroom apartments.

Evergreen aims to introduce a new level of healthy and young life style, with a comprehensive umbrella of treatments, facilities, services, activities and environment to enable people to live better, feel better, and look better. Aphrodite Wellness will offer hotel-like facilities & services including, but not limited to:

- Maintained sandy beach
- Biological outdoor swimming pools
- Well-equipped modern gym
- Yoga & meditation suites
- Wellness & SPA: sauna, steam room, hammam, jacuzzi & massage therapy
- Indoor heated swimming pool
- Cryo-sauna
- Landscaped parks & gardens
- Surfing & Water Sports Club
- Various restaurants
- Non-invasive Treatment Centre
- Functional Medicine Centre
- Beauty & Anti-ageing Centre
- Diagnostics & Check-up Centre



BEACH



BAR



RESTAURANT



COMMUNAL
POOL



CHILDREN
PLAY GROUND



INDOOR
HEATED POOL



FITNESS



SPA



SAUNA



STEAM ROOM



JACUZZI



YOGA



WELLNESS & ANTI-AGEING CLINIC

OFFERING MEDICAL CHECK UP AND DIAGNOSTICS

WELLNESS



MEMBER OF A TOP-RANKED INTERNATIONAL HOSPITAL GROUP

WELLNESS



WELLNESS



WELLNESS





WELLNESS





WELLNESS





WELLNESS





WELLNES

1 Bedroom



WELLNES

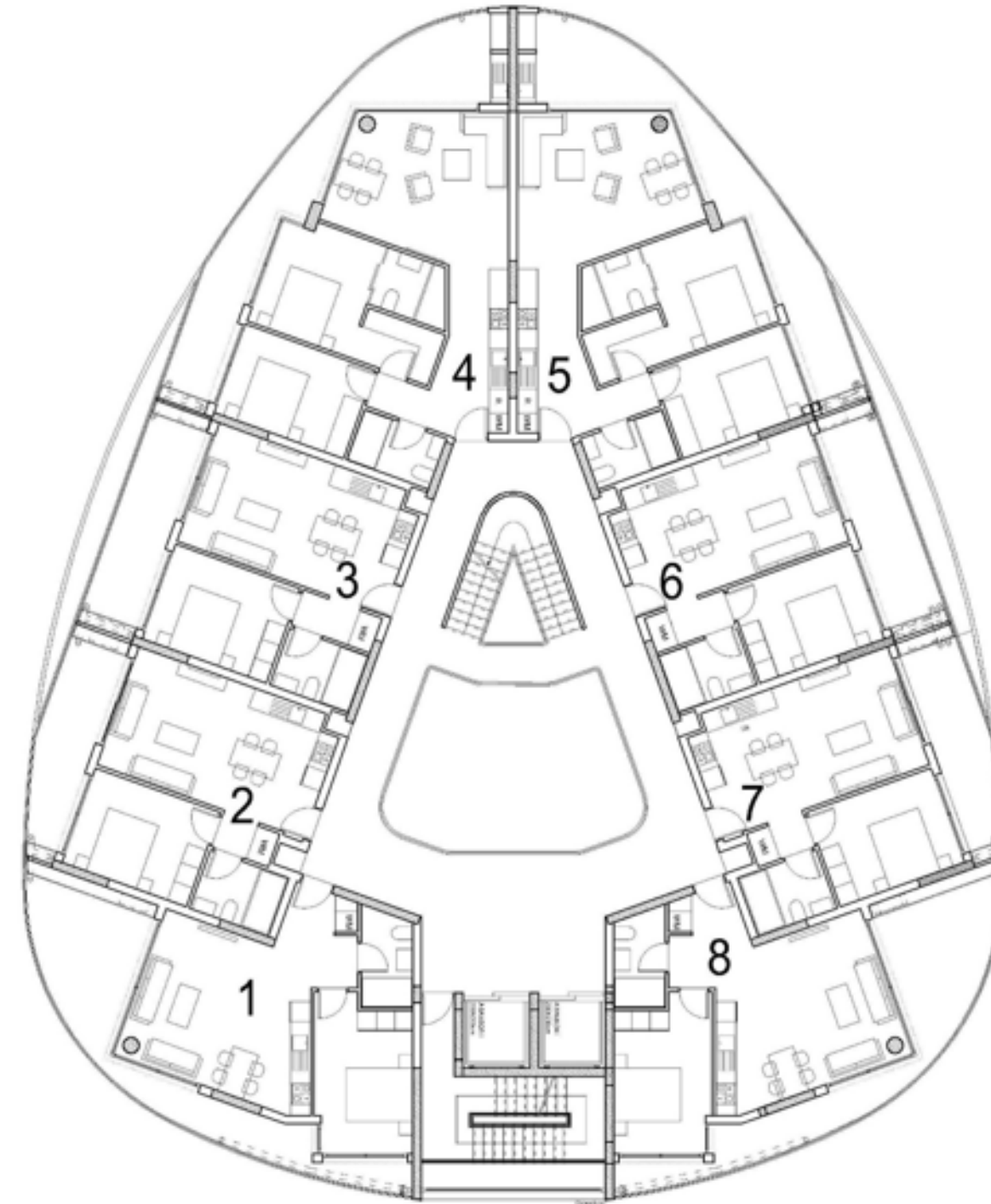
2 Bedrooms





WELLNESS D BLOCK

WELLNESS D BLOCK								
Apt No			1	2	3	4		
10th Floor								
Type			1BR	2BR	2BR	1BR		
Internal Area m2			64	109	109	66		
Terraces m2			53	33	33	51		
Apt No		1	2	3	4	5	6	
9th Floor								
Type		1BR	2BR	2BR	2BR	2BR	1BR	
Total Covered Area m2		105	93	104	104	92	105	
Internal Area m2		65	72	77	77	72	65	
Terraces m2	SUNSET	40	21	27	27	20	40	SUNRISE
Apt No	1	2	3	4	5	6	7	8
1st-8th Floors								
Type	1BR	1BR	1BR	2BR	2BR	1BR	1BR	1BR
Apt No	1	2	3	4	5	6	7	8
Total Covered Area m2	79	61	67	104	104	67	61	80
Internal Area m2	55	49	49	77	77	49	49	55
Covered Terraces m2	24	12	18	27	27	18	12	25





APHRODITE WELLNESS E BLOCK

Apt No	1	2	3	4	5	6	7	8	Apt No
11th Floor: PENTHOUSE									PENTHOUSE
Type	1BR	1BR	1BR	1BR	1BR	1BR	1BR	1BR	Type
Internal Area	50	48	48	53	53	44	49	50	Internal Area
Terraces	37	21	21	52	53	50	22	37	Terraces

SUNSET							SUNRISE					
Apt No	1	2	3	4	5	6	7	8	9	10	11	12
Floor / Type	Studio	1BR	Studio	Studio	1BR	1BR	1BR	1BR	1BR	1BR	1BR	Studio
1st-10th Floors												
Apt No	1	2	3	4	5	6	7	8	9	10	11	12
Floor / Type	Studio	1BR	Studio	Studio	1BR	1BR	1BR	1BR	1BR	1BR	1BR	Studio
Total Covered Area	37	60	36	35	61	77	56	77	57	71	56	37
Internal Area	33	49	31	28	50	64	49	64	46	59	45	33
Covered Terraces	4	11	5	7	11	13	7	13	11	12	11	4



WELLNESS



WELLNESS



WELLNESS





WELLNESS



WELLNESS



WELLNESS





AND ARRANGING
FISHING VILLAGE
WITH PARKING BOATS AND
BOAT HIRING SERVICES



LEFKE MUNICIPALITY IS PLANNING
TO REHABILITATE THE 9 HOLE CMC GOLF-RESORT





THE BUYING PROCESS

1. Reserve your property for only £2000
2. Sign power of attorney with a lawyer, share information about your purchase
3. Contract signing
4. Flexible payment plan

PROPERTY PURCHASE TAXES:

STAMP DUTY = 0.5%

VAT = 5%

TRANSFER FEE = 3%

CONSTRUCTION STAGES PAYMENT PLAN

%30

SIGNING

%20

COMPLETION
OF FOUNDATION

%20

COMPLETION
OF BRICKWORK

%20

COMPLETION
OF Plastering,
floor tiling,
windows, wall
tailing and
paintwork on
your apartment.

%7

COMPLETION
OF THE PROPERTY

%3



An aerial photograph of a coastal residential development. The image shows several modern, multi-story apartment buildings with curved facades and balconies. There are two large swimming pools with blue water and surrounding greenery. The development is situated on a peninsula or near a coastline, with a body of water visible on the left. The background shows a hazy landscape with more greenery and distant structures.

THANK YOU!

WWW.EVERGREENCYPRUS.COM