



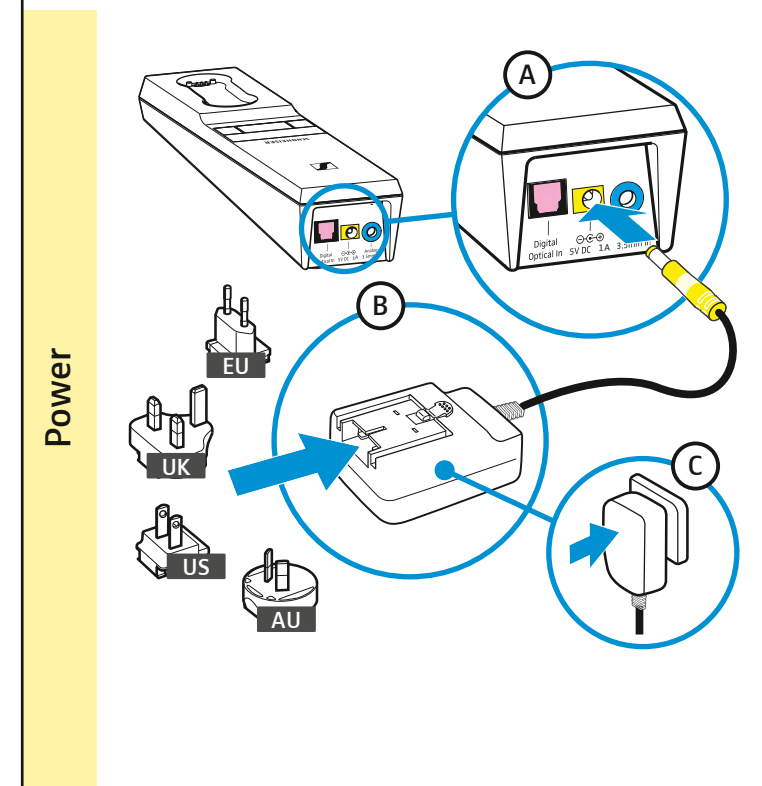
SENNHEISER

Set 860

Quick guide | Kurzanleitung | Guide de démarrage rapide | Instrucciones resumidas | Guida rapida | Beknopte gebruiksaanwijzing | Instruções resumidas | Krótka instrukcja obsługi

Putting the system into operation | In Betrieb nehmen | Mise en service du système | Puesta en servicio | Messa in funzione | In gebruik nemen | Colocar em funcionamento | Uručamianie

1 Connecting the transmitter to the power supply system | Sender an das Stromnetz anschließen | Raccorder l'émetteur au secteur | Conectar el transmisor a la red eléctrica | Collegamento del trasmettitore alla rete elettrica | De zender op de voedingsspanning aansluiten | Ligar o emissor à rede elétrica | Podłączanie nadajnika do sieci prądu



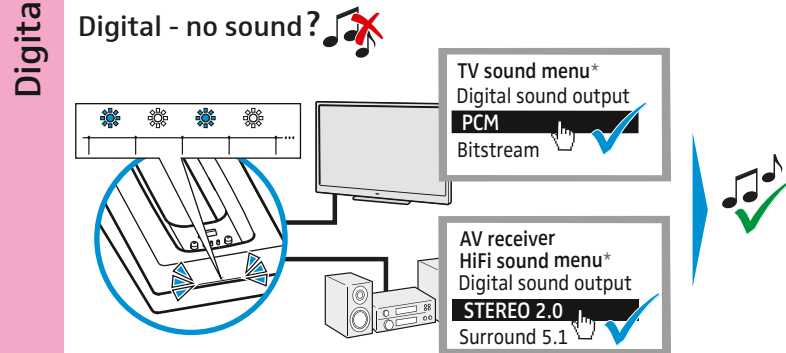
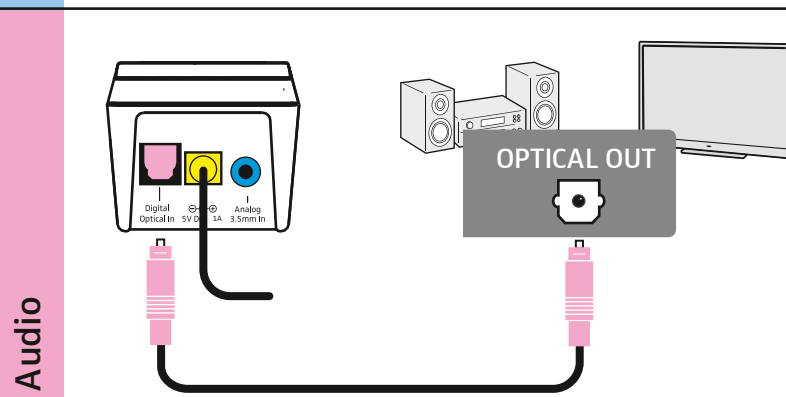
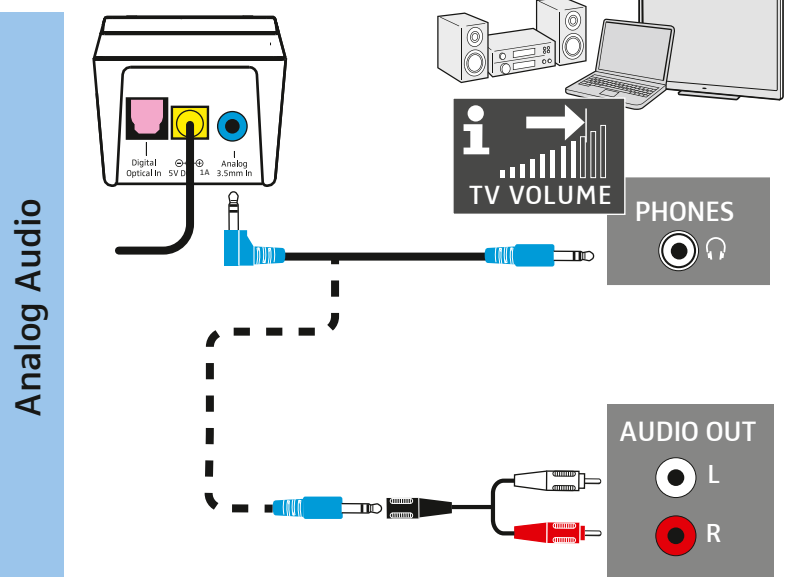
Sennheiser electronic GmbH & Co. KG
Am Labor 1, 30900 Wedemark, Germany
www.sennheiser.com

Publ. 11/18, 570712/A03

2

Connecting the transmitter to audio sources | Sender an Audioquellen anschließen | Raccorder l'émetteur à des sources audio | Conectar el transmisor a fuentes de audio | Collegamento del trasmettitore a sorgenti audio | Zender op audiobronnen aansluiten | Ligar o emissor às fontes áudio | Podłączanie nadajnika do źródeł audio

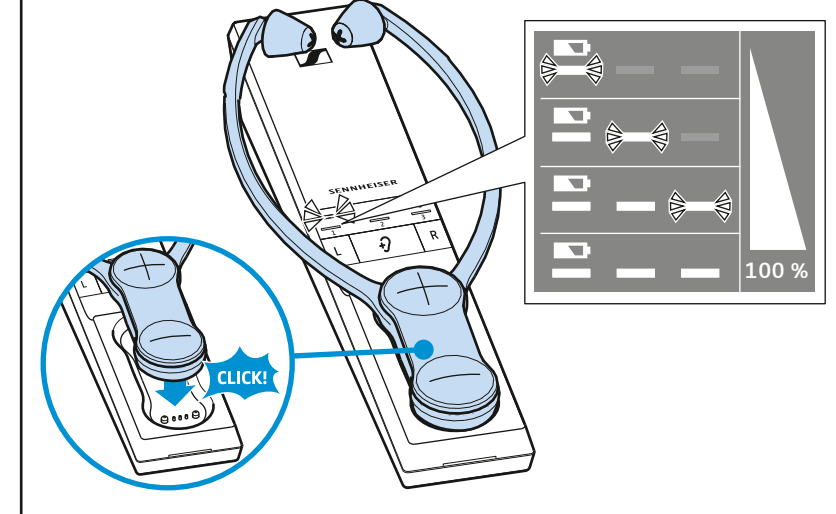
www.sennheiser.com/
how-to-videos



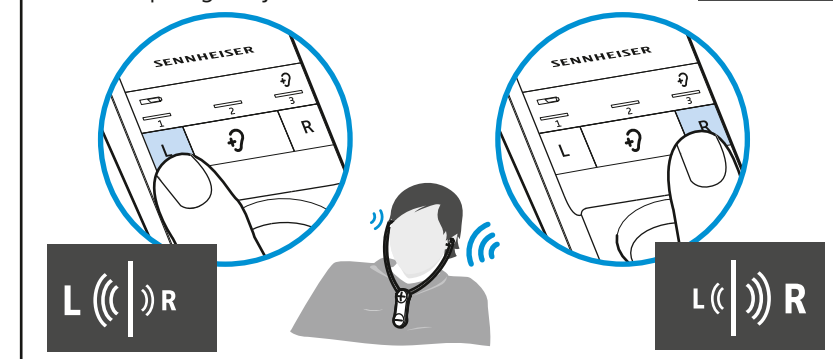
*Sound menu may vary

Using the system | Verwenden | Utilisation du système | Utilizar | Utilizzo | Gebruiken | Utilizar | Stosowanie

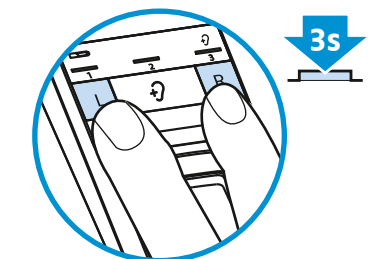
Charging the stethoset receiver | Kinnbügelhörer laden | Charger le récepteur stéthoscopique | Cargar los auriculares de mentonera | Caricamento degli auricolari sottomento | De kinbeugel-hoofdtelefoon opladen | Carregar os auscultadores estetoscópicos | Ładowanie słuchawek z pałąkiem podbródkowym



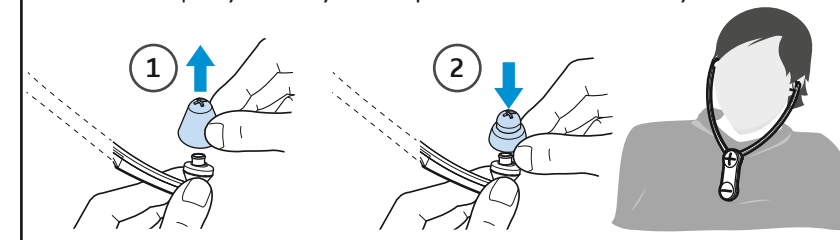
Adjusting the balance | Balance einstellen | Régler la balance | Ajustar el balance | Impostazione del bilanciamento | Balans instellen | Ajustar o Balance | Regulacja balansu



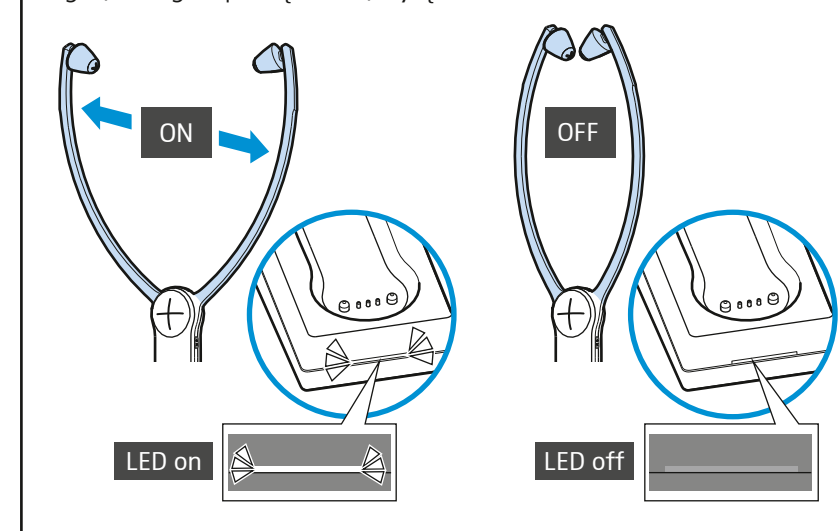
Resetting the balance | Balance zurücksetzen | Réinitialiser le réglage de la balance | Restablecer el balance | Ripristino del bilanciamento | Balans resetten | Repor o Balance | Resetowanie balansu



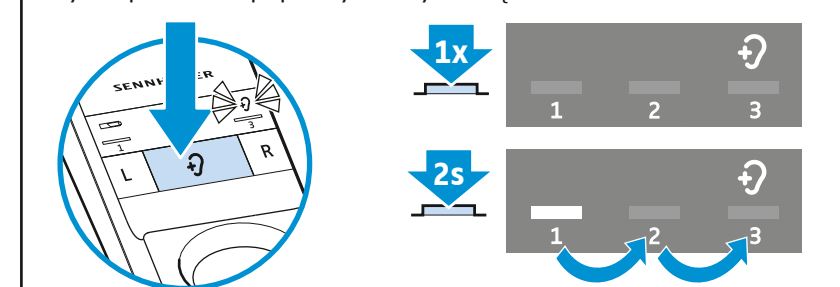
Selecting and replacing the ear pads | Ohrpolster wählen und austauschen | Sélectionner et remplacer les embouts d'oreille | Seleccionar y cambiar almohadillas | Scelta e sostituzione dei cuscinetti auricolari | Oorkussens selecteren en vervangen | Seleccionar e substituir as almofadas | Wybór i wymiana poduszek słuchawkowych



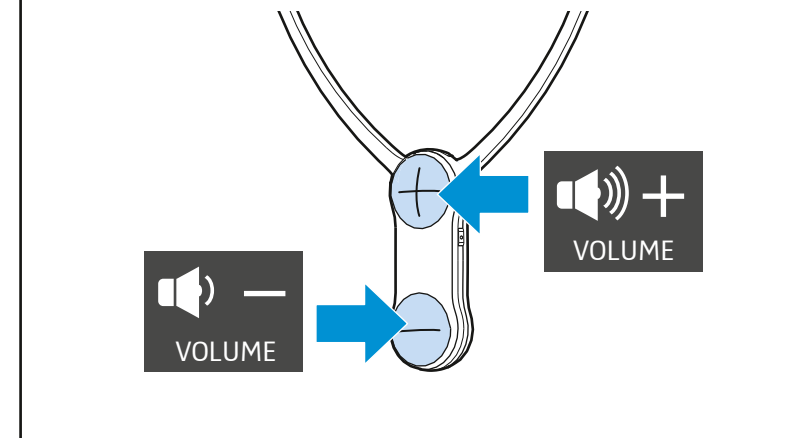
Switching on/off | Ein-/ausschalten | Mise en marche/à l'arrêt | Encender/Apagar | Accensione/Spengimento | In-/uitschakelen | Ligar/desligar | Włączanie/wyłączanie



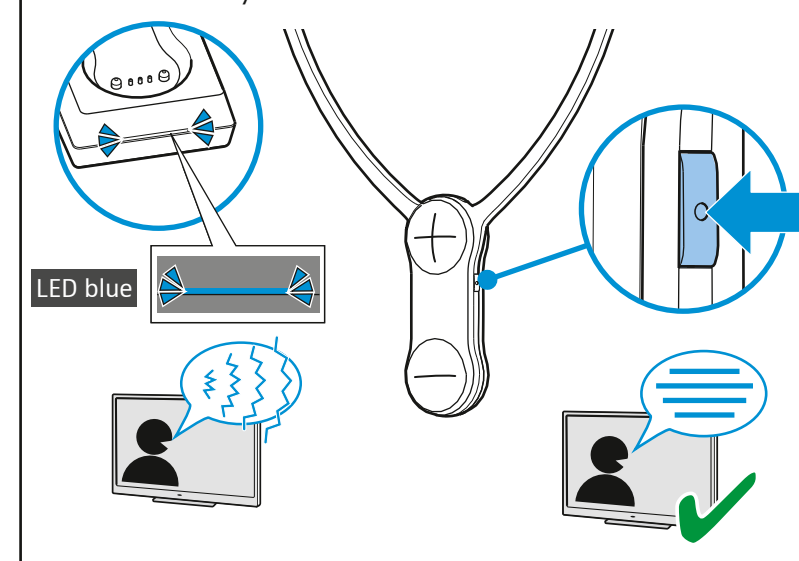
Selecting a profile for sound enhancement | Profil zur Klangverbesserung auswählen | Sélectionner un profil pour l'optimisation sonore | Seleccionar un perfil para mejorar el sonido | Selezione del profilo di perfezionamento acustico | Het profiel voor de klankverbetering selecteren | Seleccionar o perfil de melhoramento de som | Wybór profilu do poprawy barwy dźwięku



Adjusting the volume | Lautstärke einstellen | Régler le volume | Ajustar el volumen | Impostazione del volume | Volume instellen | Ajustar o volume | Regulacja głośności



Switching on the speech intelligibility function | Sprachverständlichkeit einschalten | Activer la fonction « intelligibilité de la parole » | Activar la inteligibilidad de la voz | Attivazione della chiarezza vocale | De verstaanbaarheid van spraak inschakelen | Ligar a inteligibilidade do discurso | Włączanie funkcji rozumienia mowy



www.sennheiser.com/download

EN ES PT FI CS JA LV HU SL
DE IT PL NO EL RU LT RO HR
FR NL DA SV TR ET SK BG



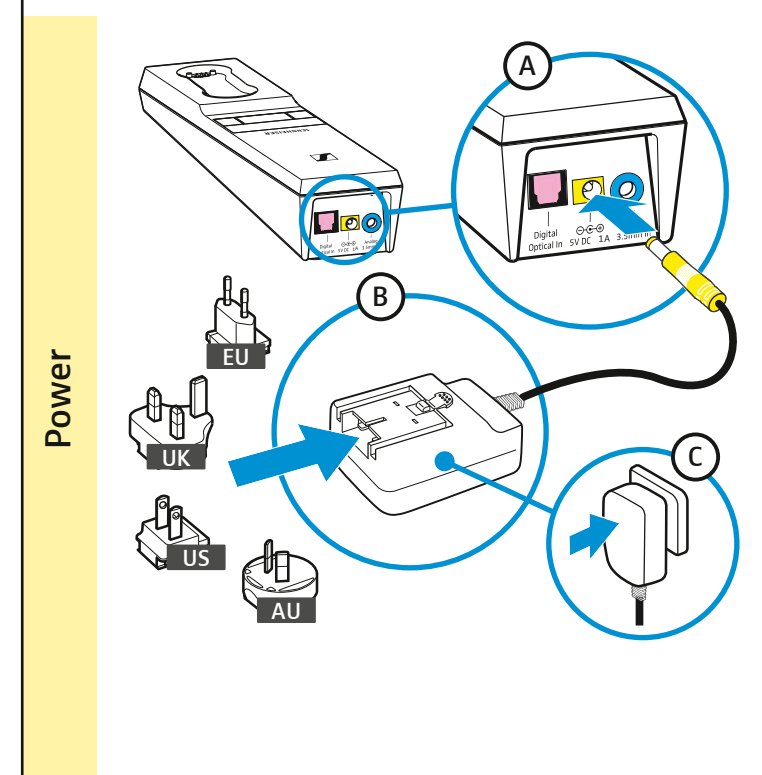
SENNHEISER

Set 860

Lühijuhend | Īsā instrukcija | Trumpoји naudojimo instrukcija | Stručný návod | Rövid útmutató | Instrucțiuni succinte | Кратко ръководство | Kratka navodila | Kratke upute

Kasutuselevõtt | Eksploatacїas sākšana | Paruošti naudoti | Uvedenie do prevádzky | Üzembe helyezés | Punerea în funcțiune | Въвеждане в експлоатация | Zagon | Pustiti u rad

1 Saatja ühendamine voluvõrku | Raiditāja pieslēgšana pie elektrotīkla | Siųstuvą prijungti prie elektros tinklo | Pripojenie vysieláča do siete | Az adó csatlakoztatása a villamos hálózathoz | Conectarea emițătorului la rețeaua de curent electric | Свързване на предавателя към електрическата мрежа | Prikľučítev oddajnika na električno omrežje | Prikľučiti odašiljač na strujnu mrežu



Sennheiser electronic GmbH & Co. KG
Am Labor 1, 30900 Wedemark, Germany
www.sennheiser.com

Publ. 11/18, 570712/A03

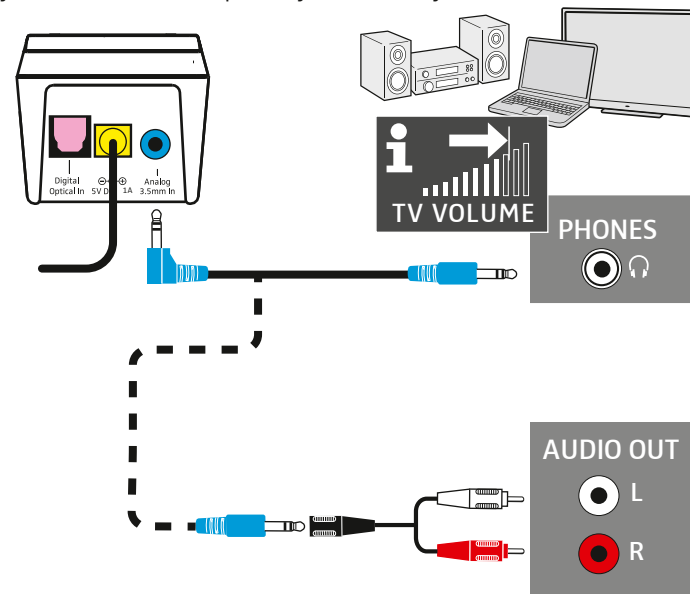
2

Saatja ühendamine audioallikaga | Raiditāja pieslēgšana pie audio avota | Siųstuvą prijungti prie garso šaltinio | Pripojenie vysieláča k zdroji zvuku | Az adó csatlakoztatása egy hangforráshoz | Conectarea emițătorului la sursa audio | Свързване на предавателя към аудио източник | Prikľučítev oddajnika na vir zvoka | Prikľučiti odašiljač na izvor zvuka

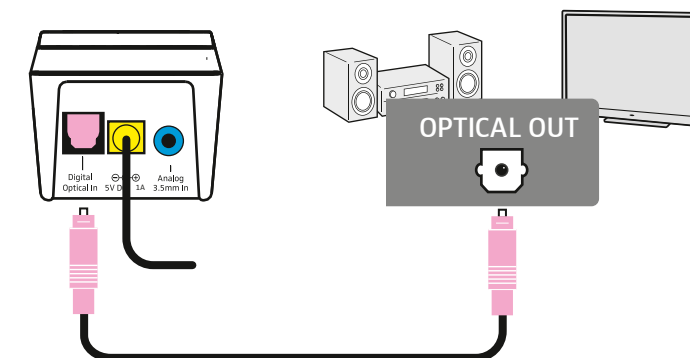
www.sennheiser.com/
how-to-videos



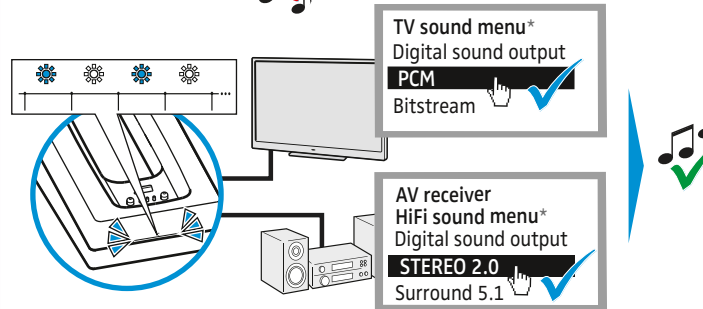
Analog Audio



Digital Audio



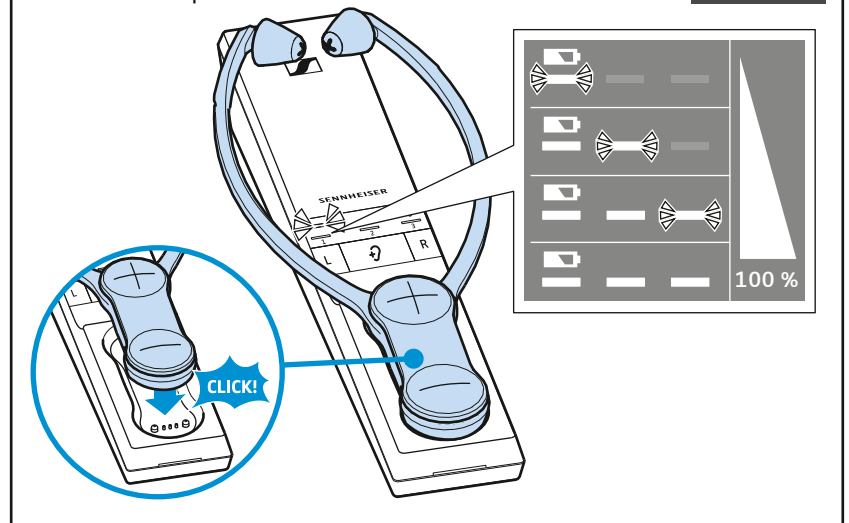
Digital - no sound?



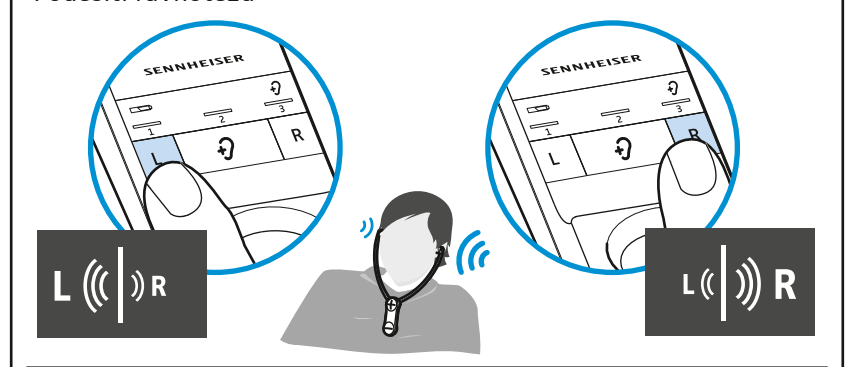
*Sound menu may vary

Kasutamine | Izmantošana | Naudoti | Používanie | Alkalmazás | Modul de utilizare | Употреба | Uporaba | Upotrijebiti

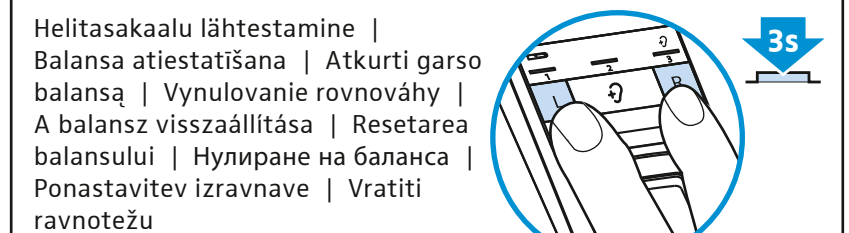
Lõuaaluse kinnitusega kõrvaklappide laadimine | Stetoskopa lādēšana | Įkrauti po smakru dėvimas ausines | Nabíjanie slúchadiel pod bradu | Az állpántos fejhallgató töltése | Încărcarea receptorului stetosopic | Заредете слушалките | Polnjenje podbradnih slušalk | Napuniti slušalice sa stremenom ispod brade



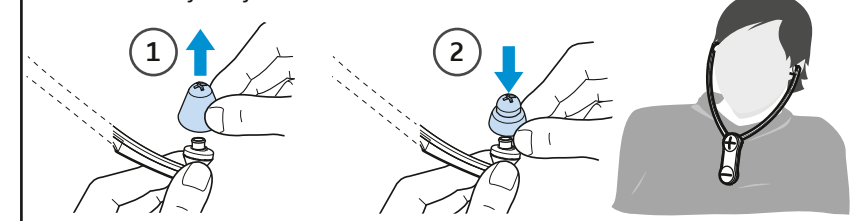
Helitasakaalu seadmine | Balansa regulēšana | Nustatyti garso balansą | Nastavenie rovnováhy | A balans beállítása | Reglarea balansului | Регулиране на баланса | Nastavitev izravnave | Podesiti ravnotežu



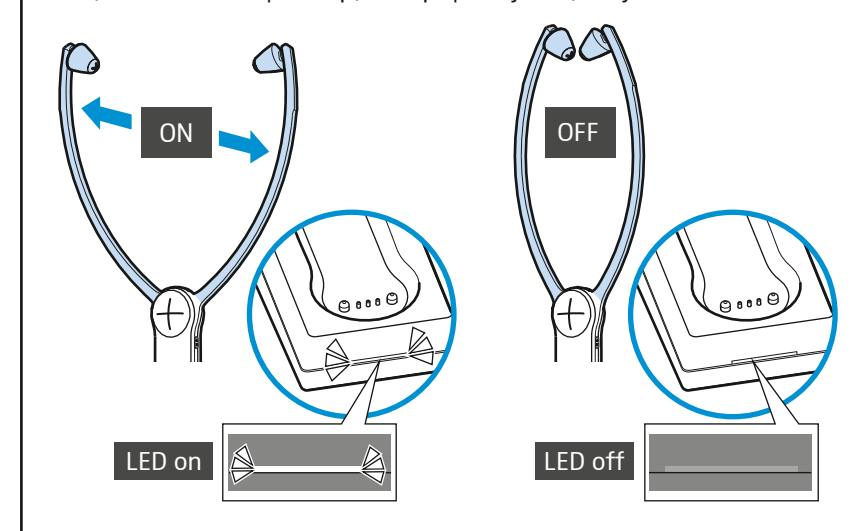
Helitasakaalu lähtestamine | Balansa atiestatīšana | Atkurti garso balansą | Vynulovanie rovnováhy | A balans visszaállítás | Resetarea balansului | Нулиране на баланса | Ponastavitev izravnave | Vratiti ravnotežu



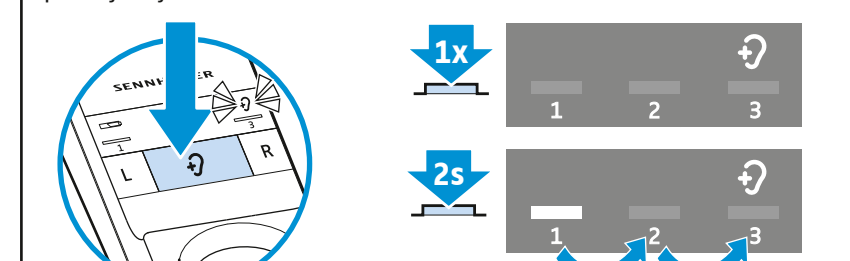
Kõrvapolstrite valimine ja vahetamine | Austiņu uzgaļu izvēle un nomaņa | Ausinių pagalvėlių pasirinkimas ir keitimas | Výber a výmena ušných vankúšikov | Válasszon fülpárnát, és cserélje ki | Alegerea și schimbarea mușajelor pentru urechi | Изберете възглавнички за уши и ги сменете | Izberite in zamenjajte ušesne blazinice | Odabir i zamjena jastučića za slušalice



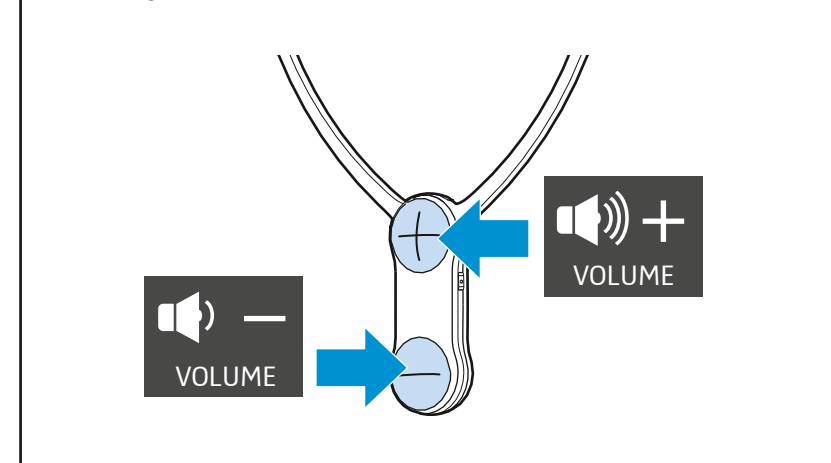
Sisse-/väljalülitamine | Ieslēgšana/izslēgšana | Įjungti arba | Zapnutie/vyprnutie | Be-/kikapcsolás | Pornirea/oprirea | Вкл./изключване | Vkllop/izklop | Uključiti/isključiti



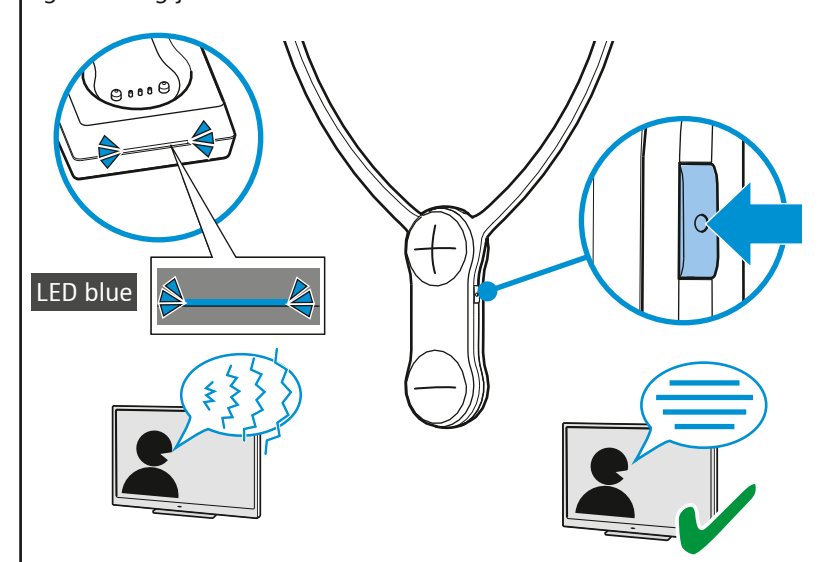
Heliparanduseks profiili valimine | Profila izvēle skaņas uzlabošanai | Pasirinkti profilį garsui pagerinti | Výber profilu na zlepšenie zvuku | A hangjavítási profil kiválasztása | Selectarea unui profil de amplificare a sunetului | Изберете профил за подобрене на звука | Izbira profila za izboljšanje zvoka | Odabrali profil za poboljšanje zvuka



Helitugevuse seadmine | Skaļuma iestatīšana | Nustatyti garsumą | Nastavenie hlasitosti | A hangerő beállítása | Reglarea volumului | Настройка силата на звука | Nastavitev glasnosti | Podesiti glasnoću zvuka



Kõne mõistetavuse sisselülitamine | Runas skaidrības ieslēgšana | Įjungti kalbos suprantamumo funkciją | Zapnutie zrozumiteľnosti jazyka | A beszéd érthetőségének beállítása | Pornirea funcției de inteligibilitate a limbajului | Включете говора | Vklp razumljivosti govora | Uključiti razumijevanje govorenog jezika



www.sennheiser.com/download

EN ES PT FI CS JA LV HU SL
DE IT PL NO EL RU LT RO HR
FR NL DA SV TR ET SK BG