



TOTAL SOLUTIONS PROVIDER OF GLUING & INSPECTION SYSTEMS TO THE

# HOT MELT PACKAGING INDUSTRY



ecostitch™  
VALCO MELTON

# WHO WE ARE

---

Valco Melton is a world-leading manufacturer of hot melt and cold glue adhesive dispensing equipment and quality inspection systems.

Combined with our commitment to providing unparalleled customer service, we offer one of the largest support networks with a team of knowledgeable sales and service personnel working to provide personal assistance with installations, troubleshooting, and support of installed equipment in over 96 countries worldwide.

Designed to operate in industrial hot melt applications, with a special focus on the food & beverage industries, Valco Melton's EcoStitch™ technology ensures your cartons are glued more efficiently, more effectively, and with much greater consistency. Featuring a hot melt applicator, a valve driver and an adhesive melter, the all-electric triad allows the manufacturing process to run without downtime and needless part changes due to wear items.



# THE POWER OF ECOSTITCH

**EcoStitch** is the all-electric, hot melt gluing solution that has revolutionized the packaging industry.

## BENEFITS

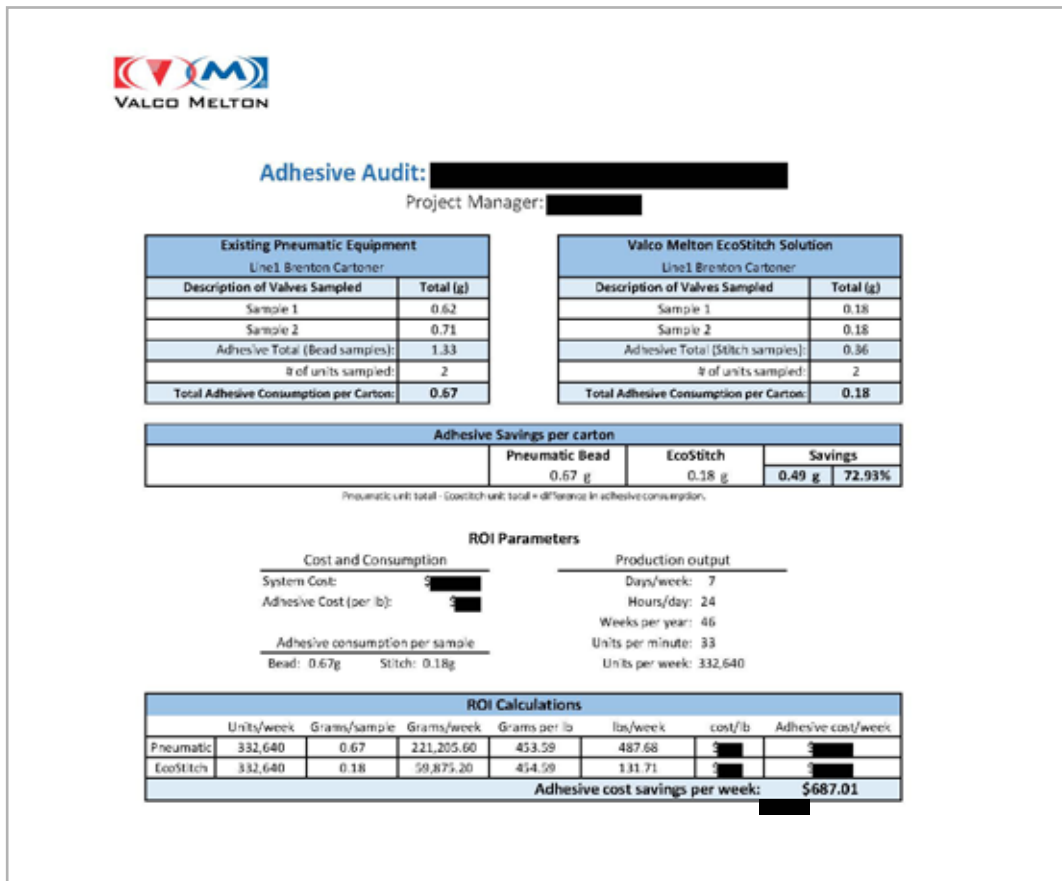
1. Return on investment in as little as 4 months
2. Reduce adhesive consumption by 40-70%
3. Elimination of plant air from system operation
4. Improve OEE and minimize TCO
5. Minimize downtime due to glue system failure
6. Significantly reduce parts changes/consumption

# ADHESIVE SAVINGS

Valco Melton's EcoStitch solution can help you reduce adhesive usage by applying precision dots. The unique Dot Count, Dot/Gap, and Stitch Percentage features will reduce adhesive usage while improving the bond quality.

**Reduce adhesive consumption by 40-70%**

\*Dependent on current usage



A Valco Melton sales representative will audit adhesive usage before and after installation and provide data as part of your system installation.



**Traditional Bead**



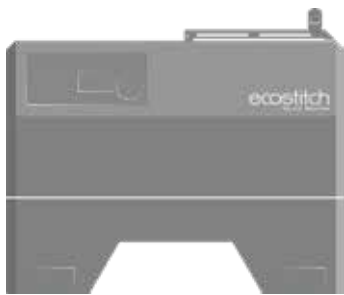
**EcoStitch Dots**

# DYNAMIC SEALS

EcoStitch electric valves and gear pumps remove almost all dynamic seals required to run a pneumatic system. This instantly improves machine uptime and reduces the chance of failure created by too many moving parts.

## ECOSTITCH SOLUTION

**1** DYNAMIC SEAL



Melter: **1** Dynamic Seal



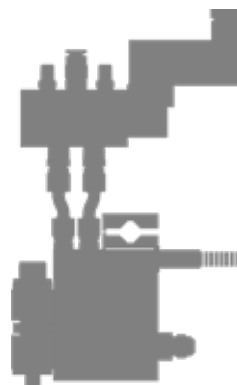
Valve: **ZERO** Dynamic Seals

## TRADITIONAL PNEUMATIC SYSTEM

**21** DYNAMIC SEALS



Melter: **10** Dynamic Seals



Solenoid: **6** Dynamic Seals



Valve: **5** Dynamic Seals

 = Dynamic Seal

The elimination of dynamic seals is a primary reason why EcoStitch valves are more accurate and last significantly longer than industry standard pneumatic valves.

EcoStitch valves are rated for 2 billion cycles.\*

*\*Field and lab tested. Operating conditions may affect results.*

# CARTON SEALING & ERECTING

Designed for high-speed carton sealing and erecting, our MXM valves are capable of accurately applying precision dot patterns at cycle rates as fast as 2.1ms while maintaining long life cycles and reducing adhesive consumption.

\*Product solutions include applicator conversion kits, full system kits, and OEM conversion kits.



*Single or Dual Module*

**45-55% Glue Savings in Case & Carton Sealing and Erecting applications.**

*OEMs we've installed on include:  
Adco, Syntegon, Bradman Lake, RA Jones,  
Serpa, WestRock, Graphic Packaging*

# CASE SEALING & ERECTING

---

Valco Melton provides hot melt gluing solutions for all types of corrugated case erecting applications. Our solutions are fully compatible with other manufacturers' equipment, so you can increase your efficiency without having to overhaul your entire line.

\*Product solutions include applicator conversion kits, full system kits, and OEM conversion kits.



# TRAY MAKING

---

Valco Melton's high-speed MXM valves reduce adhesive applied to beverage cartons packed in trays. Product quality is maintained at faster line speeds typically seen in tray making applications.



*Single or Dual Module*

**30-40% Glue Savings  
for Tray Making applications**



# PALLETIZING SOLUTIONS

---

Minimize product damage before, during, and after transportation with Valco Melton's adhesive-based palletizing systems. The palletizing systems increase overall line efficiency by avoiding unnecessary costs related to stretch film wrap such as material, disposal, and intensive labor.



- Complete pallet stabilization system for load locking cartons and bags using shot or spray methods

- Great savings in material and labor costs over stretch film palletizing systems

- Adhesive bonds prevent heat and moisture from damaging the packaged goods - even during long storage periods

- Bolt on and go
  - Just mount to your conveyor and connect to electrical supply

- No restrictions
  - Operates in any orientation



# BAG IN BOX SOLUTIONS

---

Valco Melton can customize valve designs to fit any BIB application or machine type. EcoStitch can clean up the machine, minimize the cost of product, and improve the overall process.



Immediately reduce your  
cost per product

---

**Reduce adhesive usage by  
50% in Bag in Box  
applications**



# ELECTRIC VALVES

Valco Melton's MXM electric hot melt valve is the workhorse for any hot melt dispensing solution. The valve is designed to operate at extremely high speeds, reaching 15,000 cycles per minute for short bursts, and have a lifetime capable of reaching more than 2 billion cycles\*. The MXM electric valve is used for many different applications, most notably in Food and Beverage Packaging where production uptime is essential and adhesive savings ROI is paramount.



## STANDARD

Single module valve used in carton sealing and erecting as well as small tray and carton forming



## KHS V-WING CONFIGURATION

Customized for kits with side load case packs. High-speed valve ensures accurate adhesive placement



## SLOPE BACK

Single and multi-module configurations. Easily integrates into existing machine



## TOP FEED

Features a slim, compact design uniquely configured for wrap around case packers and anywhere space is limited



## MULTI-MODULE CONFIGURATIONS

Customizable to the number of valves or spacing your application requires

Nearly any configuration is possible and easily adaptable to your existing machine



## LOW PROFILE

Commonly used in case erecting and sealing applications where the flaps of the carton or case close while glue is being applied

Also available in multi-module setups with dual and quad module configurations



## WASHDOWN RATED VALVES

All standard, multi-module, and low profile valves are available in a washdown configuration for use with water wash or wet environment heated hoses.

Immersion tested and elastomeric seals ensure water tight connections.

*\*Operating conditions may affect results.*

# MELTERS

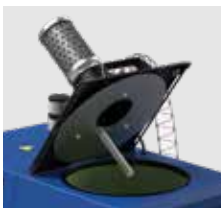
Valco Melton's EcoStitch HMUs are our most advanced melters, featuring Ethernet/IP integration, digital pressure control, adhesive usage data on screen, and full OEM integration with digital based data.



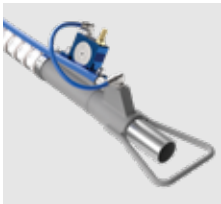
EcoStitch Hot Melt Units are available in 4L, 10L, and 16L capacities

## AUTO-FEED VACUUM SYSTEM

Valco Melton's Auto-Feed System automatically maintains the adhesive level of your connected hot melt unit while preventing debris from entering the system. Auto-feed systems offer operator safety and time-efficiency to your production floor by reducing loss of time and additional labor costs associated with manual refilling processes.



A specially designed lid assembly includes a probe to measure and maintain the adhesive level



Venturi feed process can transport adhesive chips up to 1/2" (12mm) in length up to 30m distance



Optional visual and audible alarm for confirmation of filling



# VALVE DRIVERS

---

VD2 drivers integrate into any existing machine and provide the EcoStitch dot and gap control to regulate adhesive usage. Each valve can be individually programmed for a specific dot size and gap offering unparalleled flexibility to achieve maximum adhesive savings while achieving best bond quality.



## **VD2-E** VALVE DRIVER

- Capable of operating up to two electric valves
- Two inputs for independent valve activation



## **VD2-P** VALVE DRIVER

- Ethernet/IP connectivity, for integration with the parent machine PLC
- Scalable from 2 to 12 valve outputs

## FEATURES

- Full electronic control over adhesive volume
- Four user-selectable operating modes
  - Dot/gap, dot count, bead mode, or stitch percentage
- Dot pattern, not a series of short stitches
- Activates valves based on input signals from the parent machine
  - Existing recipes are unchanged

## ENCLOSURES

Floor or wall mount if there is no room inside of existing PLC cabinet



# RUGGED HOSES

---

The RUGGED hoses from Valco Melton bring a new definition of durability, longevity, and overall quality to the hot melt hose supply industry. Valco Melton has been manufacturing hot melt hoses for over 40 years and are now introducing the hose that's more durable and industry tough than any that have come before it.

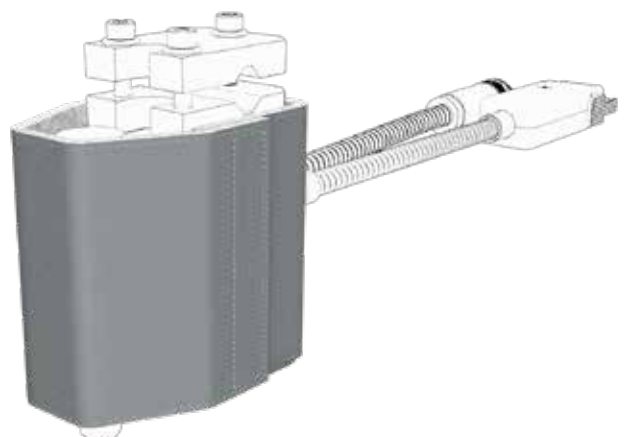


# INSULATING COVERS

---

Insulating covers for valves and fittings

- Heat retention of components
- Burn prevention for operators and maintenance personnel



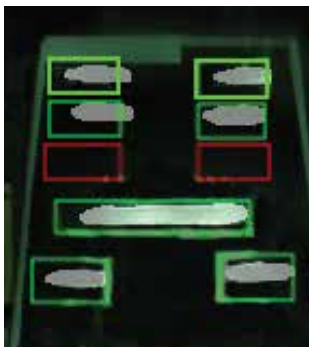
A blue and black industrial inspection system with a white logo of an open box with a checkmark inside. The background shows a factory setting with cardboard boxes.

## MAKE QUALITY VISIBLE WITH CLEARVISION'S **PACKCHEK** QUALITY ASSURANCE & VISION INSPECTION SYSTEM

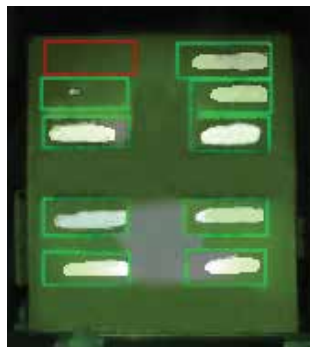
PackChek is ClearVision's automated packaging inspection system that takes a thermal and visible image of every package to ensure hot melt glue has been applied in the correct locations. Hot melt sensors have been around for decades, but tight space constraints on packaging machinery makes retrofitting them into existing machines extremely difficult. PackChek can be installed at the discharge of your machine without space constraints.

### HOW IT WORKS

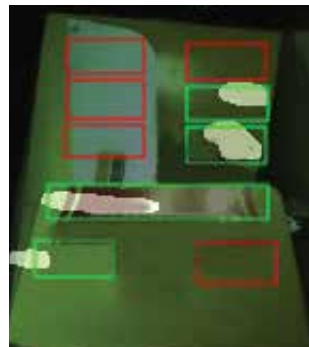
Using the thermal image, PackChek finds the heat signature of each glue bead, verifies its position and displays a user-friendly image.



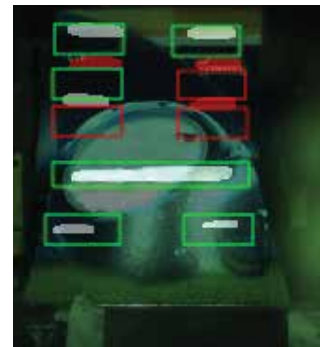
**MISSING GLUE  
BEADS**



**WEAK GLUE  
BEADS**



**CRUSHED, TORN OR  
OPEN FLAP**



**MISALIGNED GLUE  
BEADS**

## World Headquarters

**USA, OH, Cincinnati** | Tel: +1.513.874.6550  
info@valcomelton.com

### America Manufacturing, Sales & Service Centers

**Canada, Vancouver, B.C.**  
**ClearVision Technologies**  
Tel: +1.604.998.4012  
canada@valcomelton.com

**USA West Coast, CA, Petaluma**  
**GMS-Vansco**  
Tel: +1.707.285.3392  
inquiry@gmsvansco.com

**Mexico, México D.F.**  
Tel: +52.55.6278.1727  
mexico@valcomelton.com

**Colombia, Bogotá**  
Tel: +57.313.421.0926  
colombia@valcomelton.com

**Brazil, Sao Paulo**  
Tel: +55.11.3071.2117  
brazil@valcomelton.com

### Europe Manufacturing, Sales & Service Centers

**Spain, Navarra, Orcoyen** | Tel: +34 948 321 580  
spain@valcomelton.com

**France, Valence** | Tel: +33 (0) 4 75 78 13 73  
france@valcomelton.com

**Italy, Brescia** | Tel: +39 030 2732544  
italy@valcomelton.com

**Italy, Brescia | ERO s.l.r** | Tel: +39 030 2731503  
info@ero-gluers.com

**Benelux, The Netherlands** | Tel: +31 252-673673  
benelux@valcomelton.com

**Hungary, Budapest** | Tel: +36 1-214-4705  
hungary@valcomelton.com

**UK, England, Telford** | Tel: +44 1952-677911  
uk@valcomelton.com

**Germany, Düsseldorf** | Tel: +49.211 984 798-0  
germany@valcomelton.com

**Poland, Dlugoleka** | Tel: +48 71 889 04 50  
poland@valcomelton.com



Direct Sales Centers ●  
Distributors Worldwide ●

### South, Southeast, West & Central Asia Manufacturing, Sales & Service Centers

**Turkey, Istanbul** | Tel: +90 212 327 99 71  
turkey@valcomelton.com

**India, Bangalore** | Tel: +91.80.46553300  
india@valcomelton.com

**UAE, Sharjah** | Tel: +971.521305960  
uae@valcomelton.com

**Singapore, Singapore** | Tel: +65 850 95355  
singapore@valcomelton.com

### East Asia Sales & Service Centers

**China, Shanghai** | china@valcomelton.com  
**China, Xiamen** | Tel: +86.592.591.7854  
Fax: +86.592.591.7834 | china@valcomelton.com

To find the office nearest you, visit:  
<http://bit.ly/2Cb8Fv2>  
or snap a picture of this QR Code

