



GLUECHEK

How it Works

GlueChek™ takes a picture of every glue tab. The system analyzes the glue pattern to ensure that no gluing problems exist. When a gluing problem is found, GlueChek™ notifies operators by alarm, then marks the defective box and saves an image of the gluing problem.

Benefits

By identifying and removing all defects before shipment, box makers can now provide perfectly glued boxes to their customers. Having saved a picture of every defect builds operator confidence, helps maintenance troubleshoot, and increases customer satisfaction.

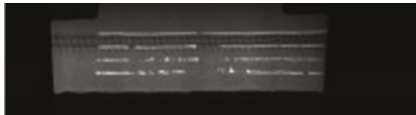


Bad Glue Joint Examples

No Glue



Light Glue



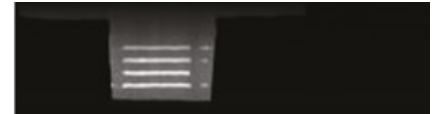
Damaged Box



Glue Gaps



Late End



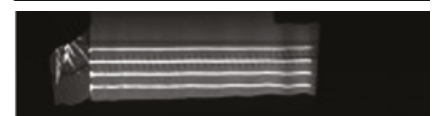
Late Start



Missing Bead



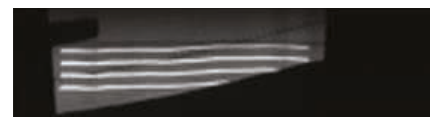
Hanging Tab



Skew/Offset Examples

Skew

Skew tolerance set by angle.



Offset

Offset box compares each box location accross machine with learned position.

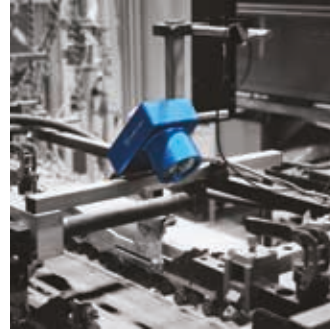


Cameras For Every Application



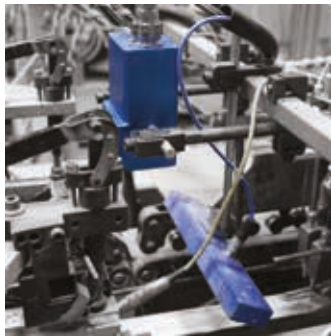
Narrow

- Small footprint
- Simple to move and install
- Self-calibrating
- Ideal for single glue line or DOT applications
- Field of view 60mm wide



Standard

- Typically uses external lighting
- Best for permanent mount
- FOV: 40mm (1.57") to 100mm (3.94")
- Ideal for LaserChek, GlueChek, and WindowChek applications



Mega

- Ideal for whole carton image
- Glue pattern, flaps, and fold confirmation
- FOV: 60mm (2.36") to 700mm (27.56")



Shadow

- Built-in lighting source
- Designed to create profile or shadow to define raised edges.
- Ideal for braille, glue patterns, tip-ons and more

User Interface

MegaGlueChek™ - 3 Camera Array



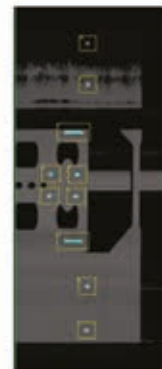
Patented Dual-Channel Lighting Technology for GlueChek Products



Visible Light Image



UV Light Image



Hybrid Image



Analysis Image



For more information, visit valcomelton.com or contact your local Valco Melton representative.

World Headquarters: Cincinnati, OH, USA (Corporate Offices) • Tel: +1.513.874.6550 • info@valcomelton.com

Europe Headquarters: Orkoien, Spain • Tel: +34.948.321.580

Asia Headquarters: Xiamen, Fujian, China • Tel: +86.592.591.7854