

PLAYA PACIFICA





What is Playa Pacifica?

Playa Pacifica is a beautiful Spanish Ranch style neighborhood nestled within the gated resort of Gran Pacifica in Nicaragua. This community is the closest gated beachfront resort to both the capital city of Managua and the international airport. With a long list of amenities and stunning weather all year round, Playa Pacifica is the perfect place to own a vacation rental, a “plan B” home, or settle down and relax.

Take a look at the homes that are to come in this one-of-a-kind opportunity to own a beautiful home on the Pacific Ocean!



Nicaragua

Nicaragua is known for its natural beauty, historical buildings, rich culture and extremely friendly people. With one of the lowest crime rates in Central America and welcoming locals, Nicaragua should be high on your list of places to invest.





Master Plan

Phase One Availability:

Ocean Front

- F1
- F2
- F3

Ocean View

- V4
- V5
- V6

Tiny Homes

- T1 - Reserved
- T2
- T3
- T4
- T5
- T6
- T7
- T8

- T9
- T10
- T11
- T12
- T13
- T14
- T15
- T16





Clubhouse and Restaurant





Home Models

Galician or Losino (Tiny Home/s)

538 ft²

579 ft²

Studio
1 - bathroom

2 - bedroom
1 - bathroom



Paso Fino (Beach View)

1,400 ft²

2 - bedroom
2 - bathroom



Andalusian (Beach Front)

1,937 ft²

3 - bedroom
2.5 - bathroom



See price list for current pricing on all models.

Galician

538 ft²

Studio

1 - bathroom

The Galician tiny home, named after one of the rarest of Spanish horses, is a rare find indeed. This home is the most efficiently designed home across the entire resort. This home model might categorically be a “tiny home,” but its roomy floor plan and luxurious appointments make it your own castle by the beach!

This tiny home neighborhood within the Playa Pacifica community is conveniently located to the Pacific ocean, multiple pools, fine dining restaurants, and the community's lazy river than any other tiny homes on the resort property!

Because of the limited number of homes available and the most affordable cost of ownership in proximity to the ocean, an immediate appreciation in value is all but guaranteed.

Enjoy your outdoor cooking area as you relax to the sound of the waves knowing you have one of the most unique homes in an amazing location!

Welcome to your Galician tiny home at Playa Pacifica.







Galician Interior Examples

Galician Floor Plan

538 ft²

Studio

1 - bathroom



Losino

579 ft²

2 - bed

1 - bathroom

The Losino tiny home is the perfect blend between a “tiny home” size and price but with the estate home feel. This home has the most “bang for the buck” that you’ll find.

When you love the idea of having a minimalist home that is also Eco-sensible, but also has an extra room for guests, kids or grandkids to join you at the beach, the Losino is your dream home!

Plus this tiny home model within the Playa Pacifica community is the perfect rental revenue investment home as well with the best mix between space for vacationers and nightly rate to be the model chosen by most renters.

Welcome to your Losino tiny home at Playa Pacifica.

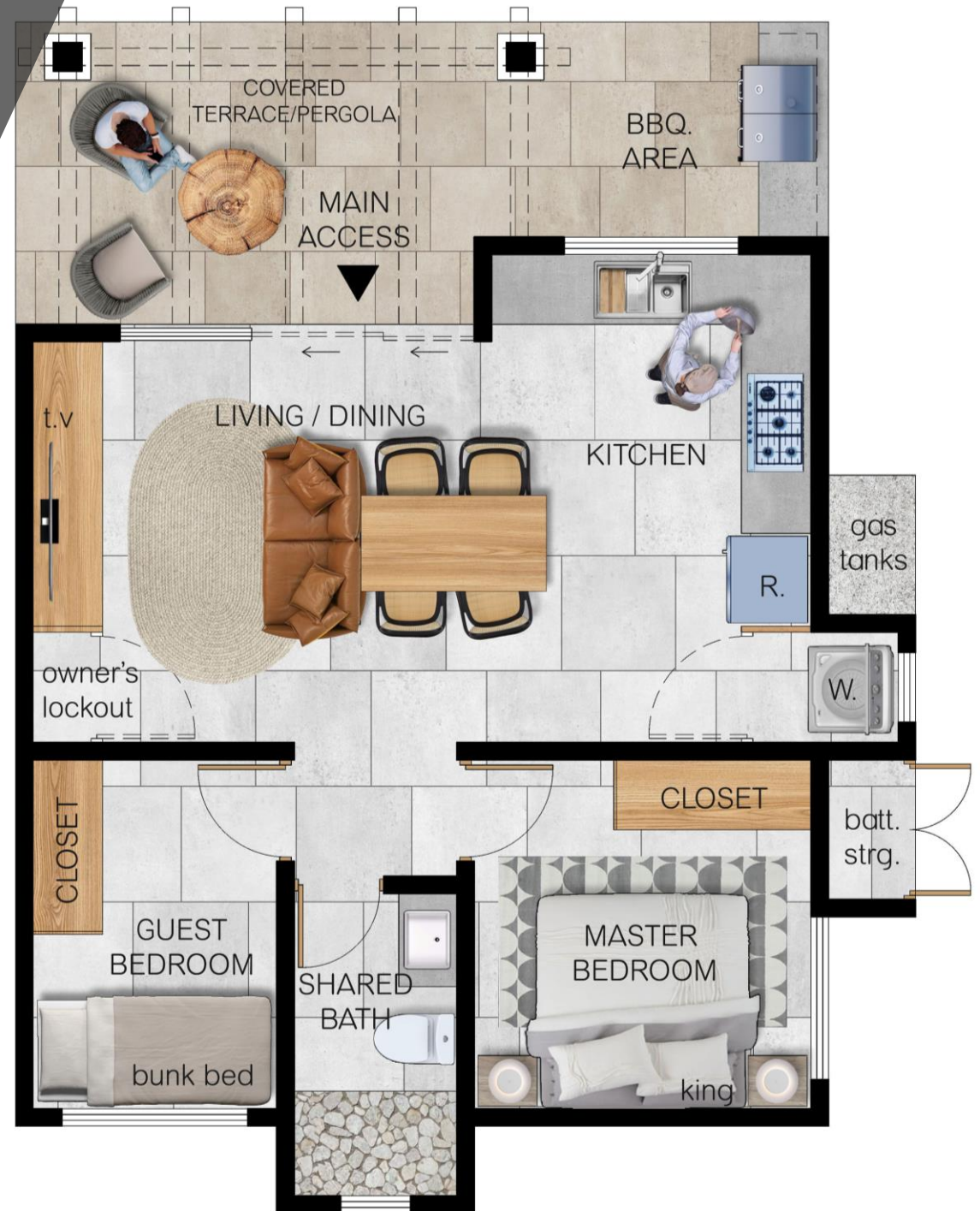


Losino Floor Plan

579 ft²

2 - bedroom

1 - bathroom



Paso Fino

1,400 ft²

2 - bedroom

2 - bathroom

The Paso Fino model home is named after one of the world's most graceful horses and rightfully so. This home boasts an effortless natural flow from indoors to outdoors by way of open living and entertainment spaces that invite a feeling of spacious comfort.

With your home site just, a stone's throw from the beach you will hypnotize your senses with incredible ocean views, warm tropical breezes, and sounds of soft waves. You will be the envy of your friends and family and will likely have frequent visitors!

Enjoy the money savings of your hybrid solar-powered home while relaxing on your open-air patio.

Welcome to your Paso Fino home in Playa Pacifica.







Paso Fino Interior Examples

Paso Fino Floor Plan

1,400 ft²

2 - bedroom

2 - bathroom



Andalusian

1,937 ft²

3 - bedroom

2.5 - bathroom

The Andalusian is Playa Pacifica's grand estate beachfront home, named after the grandest of the Spanish horses. The Andalusian home model is one of the most luxurious homes, in the most ideal beachfront location within all of the resort!

This custom designed masterpiece not only has extremely efficient use of its gracious space, a state-of-the-art hybrid solar power system but also boasts being as close to the beach as you can get. Your home is just steps to the beach, the lazy river and to the pools of Playa Pacifica plus just a short walk to multiple restaurants!

Enjoy your large and luxurious covered patio while you watch the spectacular sunsets over the Pacific Ocean!

Welcome to your Andalusian home in Playa Pacifica.







Andalusian Interior Examples

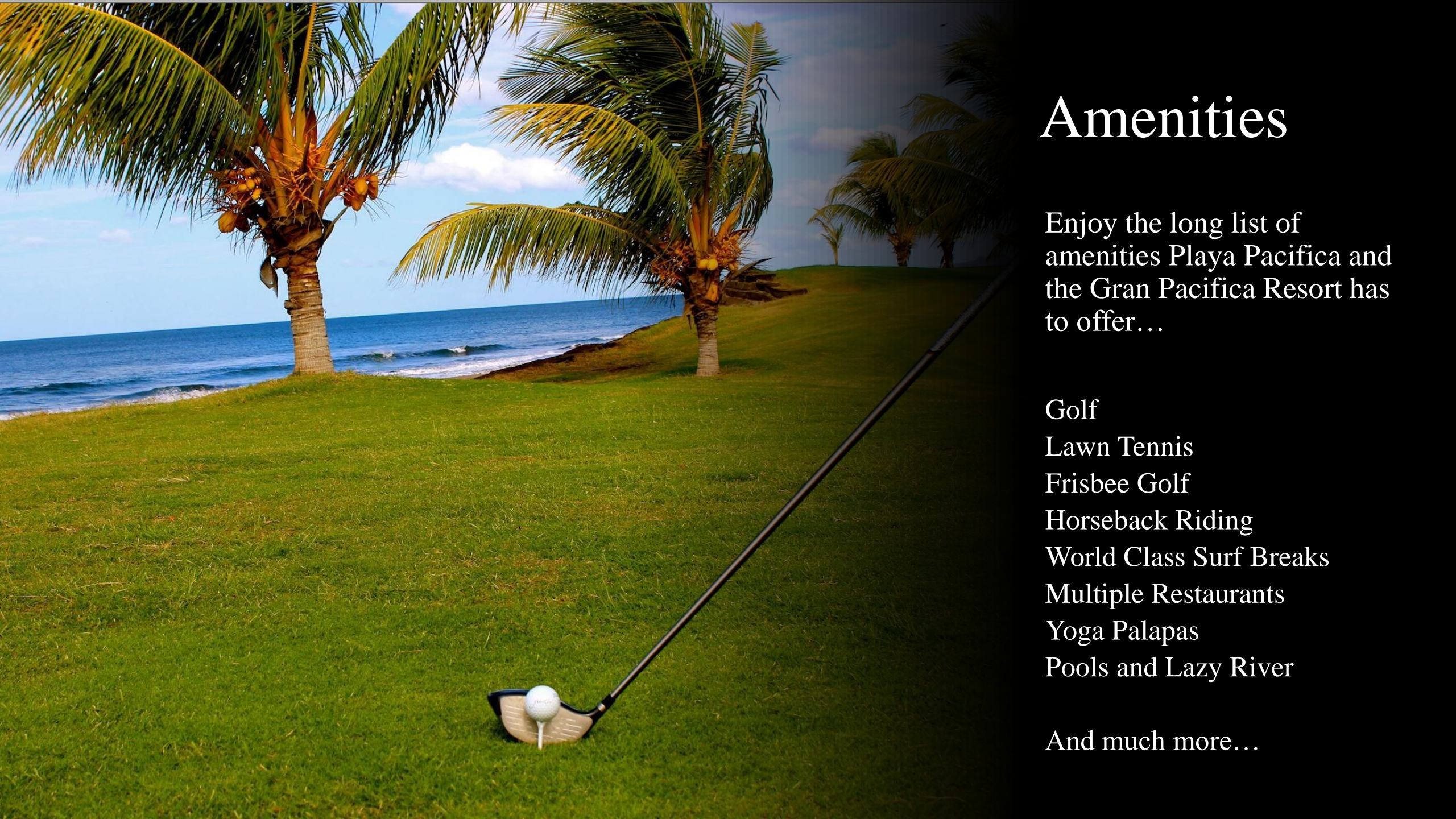
Andalusian Floor Plan

1,937 ft²

3 - bedroom

2.5 - bathroom





Amenities

Enjoy the long list of amenities Playa Pacifica and the Gran Pacifica Resort has to offer...

Golf

Lawn Tennis

Frisbee Golf

Horseback Riding

World Class Surf Breaks

Multiple Restaurants

Yoga Palapas

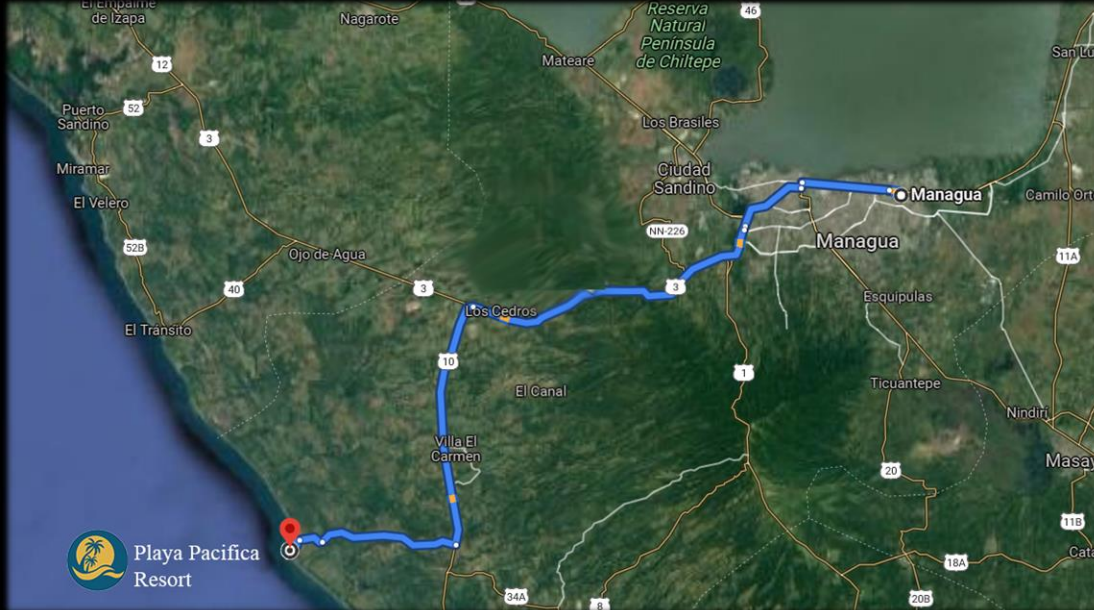
Pools and Lazy River

And much more...





Distance to Airport



Less than an hour away from the capital city of Managua, Playa Pacifica is in the closest gated, beachfront community to the international airport.

So, you can enjoy a nice dinner and movie in the city and then easily drive to your tranquil beach home for a peaceful nights sleep.



PLAYA PACIFICA

THANK YOU, CONTACT US FOR MORE
INFORMATION.

www.playapacificaresort.com
INFO@ECOVILLAGES.LIFE

