

# City Council/AlexRenew Board CSO Subcommittee/Workgroup

Meeting No. 16

October 19, 2022



## Recap from July Meeting

- Provided a summary of Noise Variances permitted by the City of Alexandria for the Tunnel Project
- Tunnel Project Update
- Community Outreach Update

## Tonight's Presentation

- Tunnel Project Update
- Community Outreach Update

# Tunnel Project Update

---

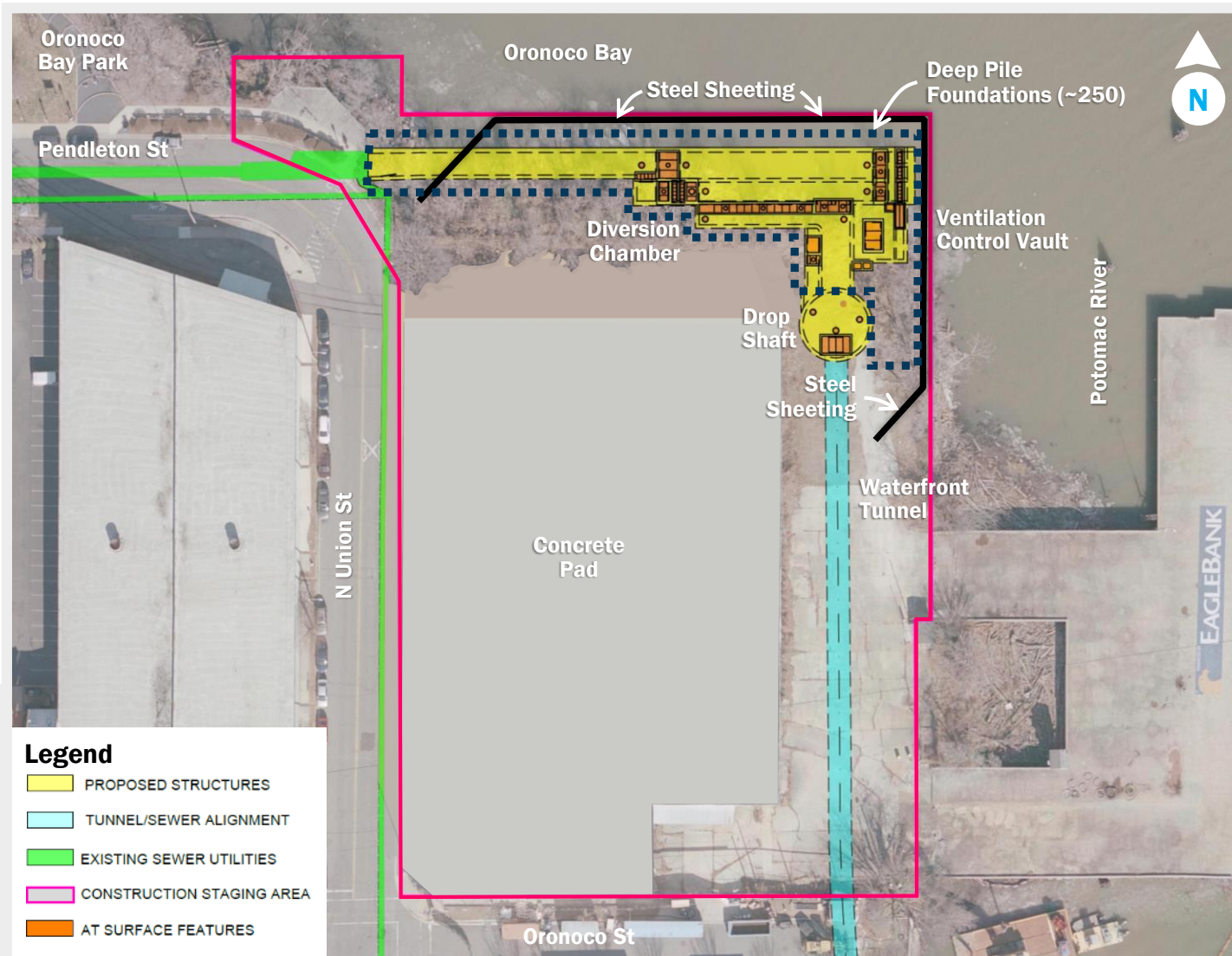


# Summary of RiverRenew Tunnel Project noise variances permitted by the City of Alexandria.

Site	Activity	Noise variance	Hauling	Dates
<b>Pendleton Street</b>	Shaft slurry wall construction	5 a.m. – 11 p.m. (Mon-Fri)	7 a.m. – 6 p.m. (Mon-Fri)	Aug 2022 – Dec 2022
	Shaft slurry wall construction (large concrete pours)	24/7 (7 days remaining)	24/7 (7 days remaining)	Aug 2022 – Dec 2022
	Shaft excavation	5 a.m. – 11 p.m. (Mon-Fri)	7 a.m. – 6 p.m. (Mon-Fri)	Dec 2022 – May 2023
	TBM removal	24/7	7 a.m. – 6 p.m. (Mon-Fri)	Oct 2023 – Dec 2023
<b>Royal Street</b>	Shaft excavation	5 a.m. – 11 p.m. (Mon-Fri)	7 a.m. – 6 p.m. (Mon-Fri)	Sep 2022 – Dec 2022
<b>AlexRenew</b>	Tunnel construction	24/7	7 a.m. – 6 p.m. (Mon-Fri)	Aug 2022 – Oct 2023



# Pendleton Street Site design and construction update.



## Design Progress

■ Actual ▨ Planned As of Sep 30, 2022



## Construction Progress





Nov 2024 ▲

## Major Activities

- Shaft slurry wall construction ongoing

# Major construction activities in the next 6 months at Pendleton Street Site.

Nov	Dec	Jan	Feb	Mar	Apr
Slurry Wall Construction		Shaft Excavation		Permanent Concrete	
Near Surface Structures (NSS) Deep Foundations and Support of Excavation (SOE)				Permanent Concrete	
 <p><b>!</b> 5 a.m. – 11 p.m. Mon–Fri</p> <p>No anticipated impacts to sidewalks, bicycle routes, or travel lanes</p> <p>75 trucks/day</p> <p><b>Shaft Slurry Wall Construction</b></p>	 <p><b>!</b> 5 a.m. – 11 p.m. Mon–Fri</p> <p>No anticipated impacts to sidewalks, bicycle routes, or travel lanes</p> <p>70 trucks/day</p> <p><b>Shaft Excavation</b></p>	 <p>7 a.m. – 6 p.m. Mon–Fri</p> <p>No anticipated impacts to sidewalks, bicycle routes, or travel lanes</p> <p>15 trucks/day</p> <p><b>NSS Deep Foundations and SOE (Pile Driving Activities)</b></p>	 <p>7 a.m. – 6 p.m. Mon–Fri</p> <p>No anticipated impacts to sidewalks, bicycle routes, or travel lanes</p> <p>70 trucks/day</p> <p><b>Permanent Concrete Construction</b></p>		

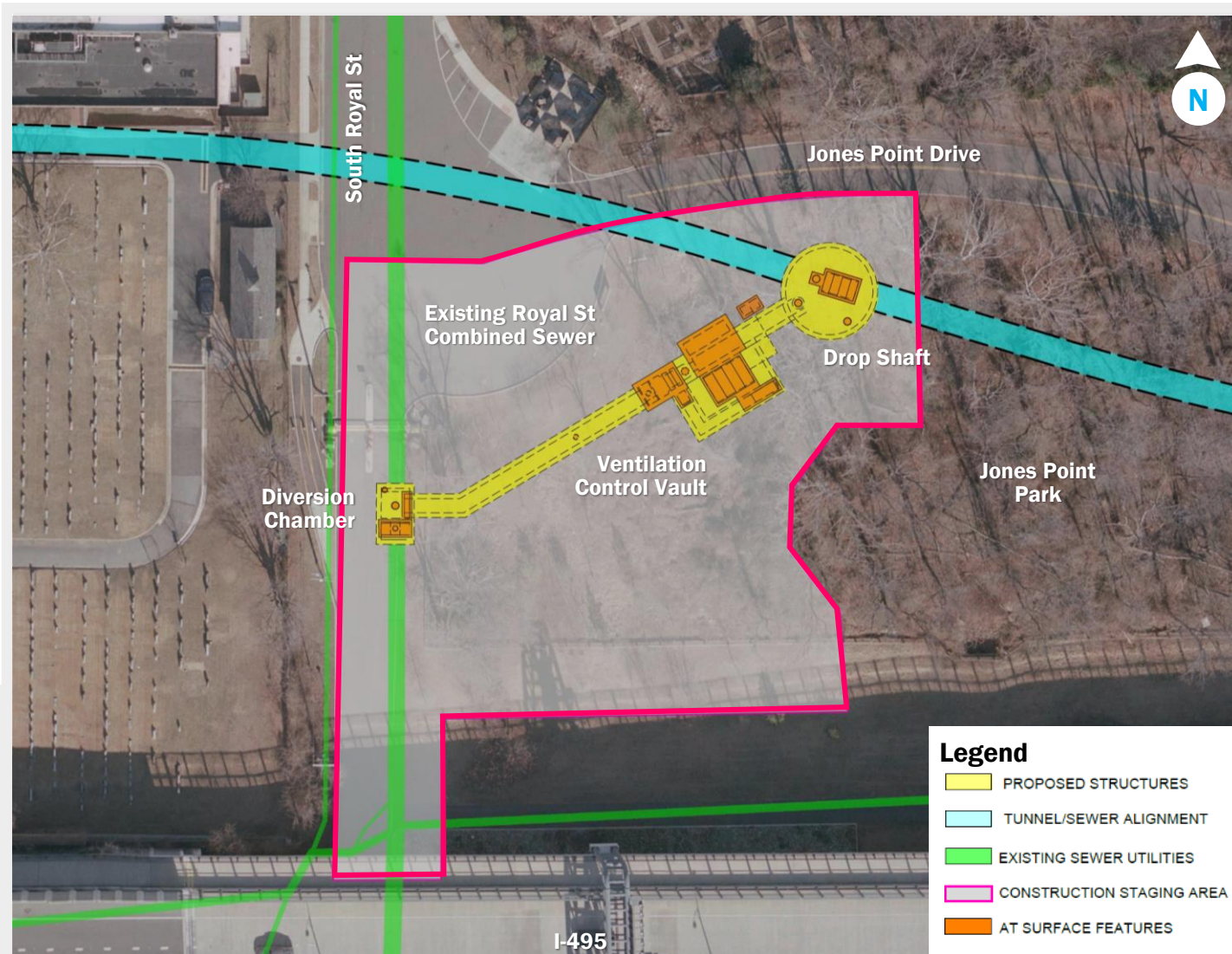


Note: Pictures representative of upcoming construction work



Variance (see Slide 4)

# Royal Street Site design and construction update.



## Design Progress

■ Actual ▨ Planned As of Sep 30, 2022





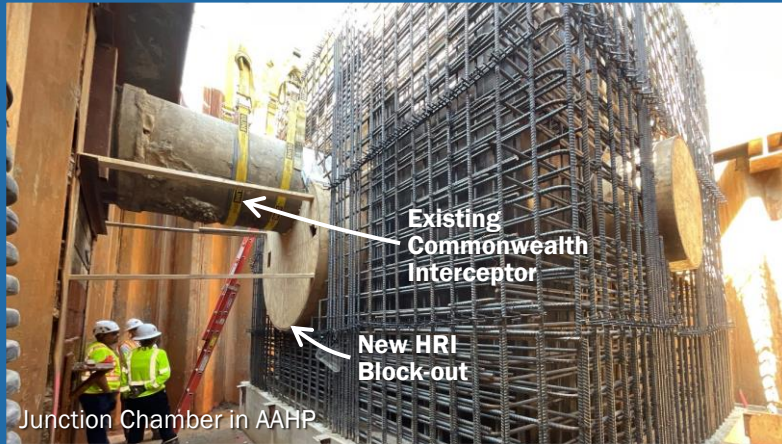
## Construction Progress



## Major Activities

- Shaft slurry wall construction complete
- Shaft excavation ongoing

# Major construction activities in the next 6 months at Royal Street Site.

Nov	Dec	Jan	Feb	Mar	Apr
Shaft Excavation	Near Surface Structures Support of Excavation and Foundation Piles			Near Surface Structures Construction	
 <p><b>!</b> 5 a.m.- 11 p.m. Mon-Fri</p> <p>No anticipated impacts to sidewalks, bicycle routes, or travel lanes</p> <p><b>70</b> trucks/day</p>	 <p>7 a.m. - 6 p.m. Mon-Fri</p> <p>No anticipated impacts to sidewalks, bicycle routes, or travel lanes</p> <p><b>20</b> trucks/day</p>			 <p>7 a.m. - 6 p.m. Mon-Fri</p> <p>No anticipated impacts to sidewalks, bicycle routes, or travel lanes</p> <p><b>30</b> trucks/day</p>	
<b>Shaft Excavation</b>	<b>Near Surface Structures Support of Excavation and Foundation Piles</b>			<b>Near Surface Structures Construction</b>	



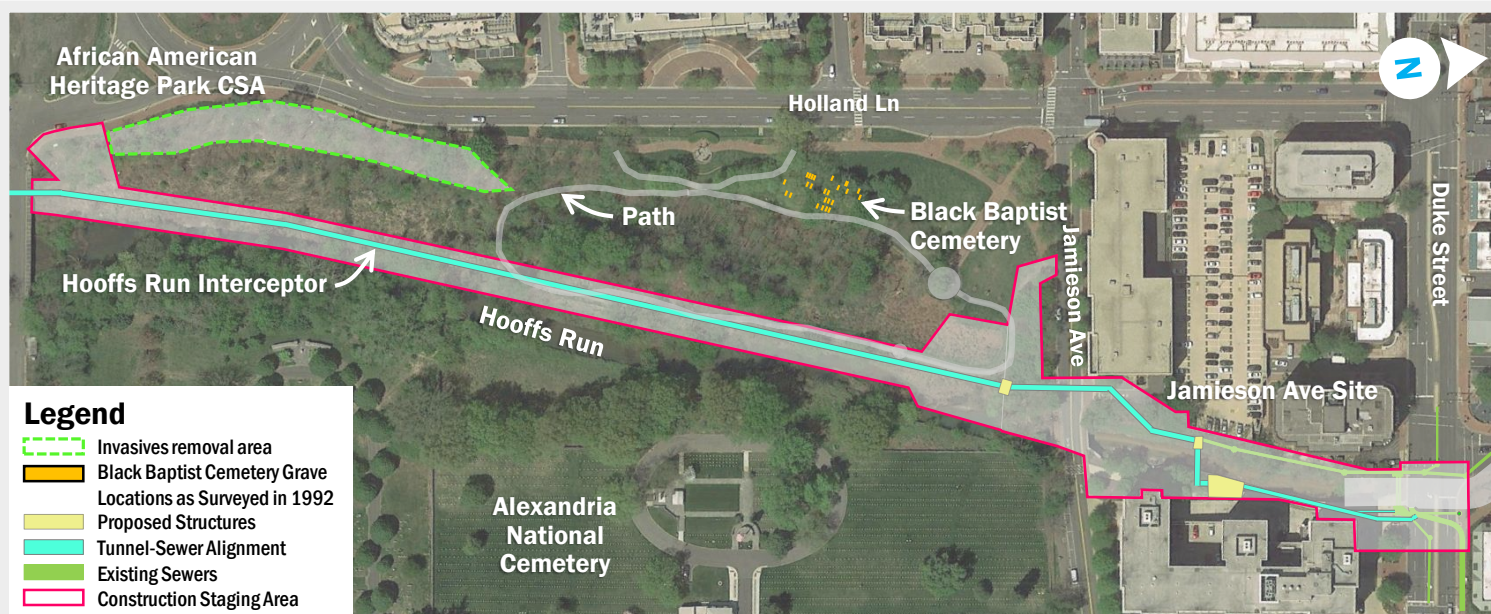
Note: Pictures representative of upcoming construction work



Variance (see Slide 4)



# Hooffs Run Interceptor design and construction update.

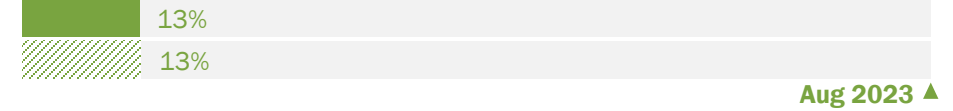


## Design Progress

■ Actual ▨ Planned As of Sep 30, 2022

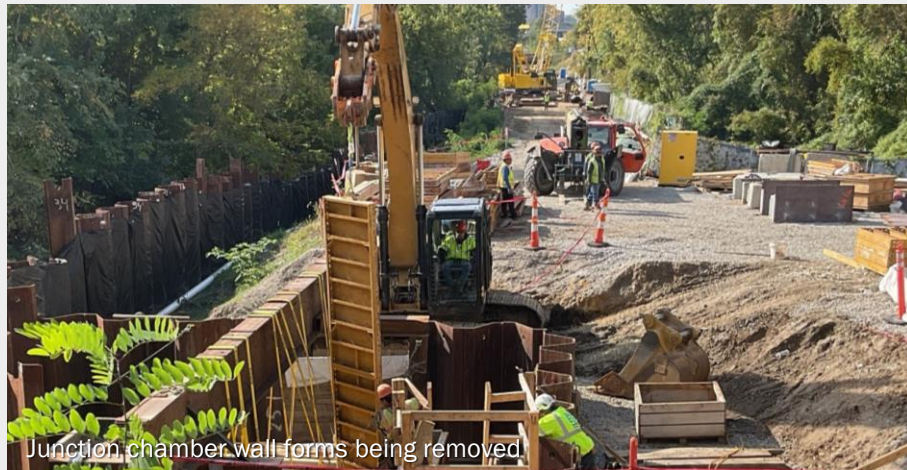


## Construction Progress

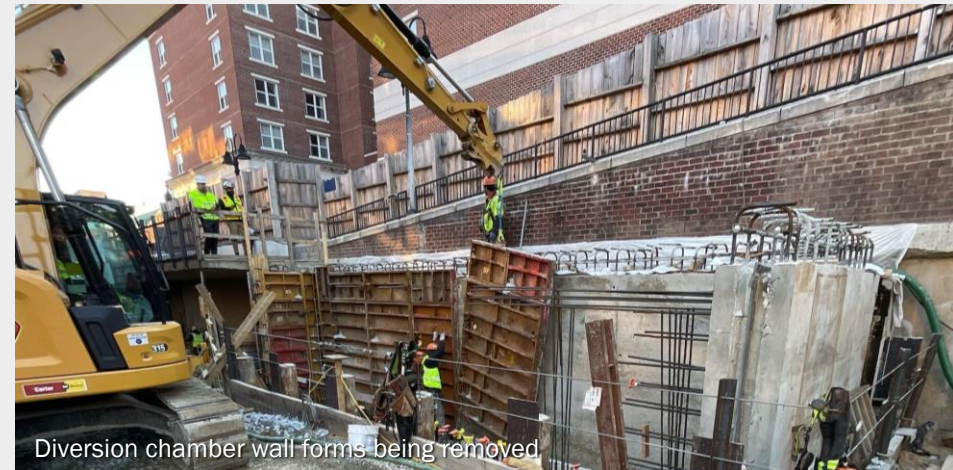


## Major Activities

- Jamieson Ave Site diversion chamber construction ongoing
- African American Heritage Park Site junction chamber construction ongoing

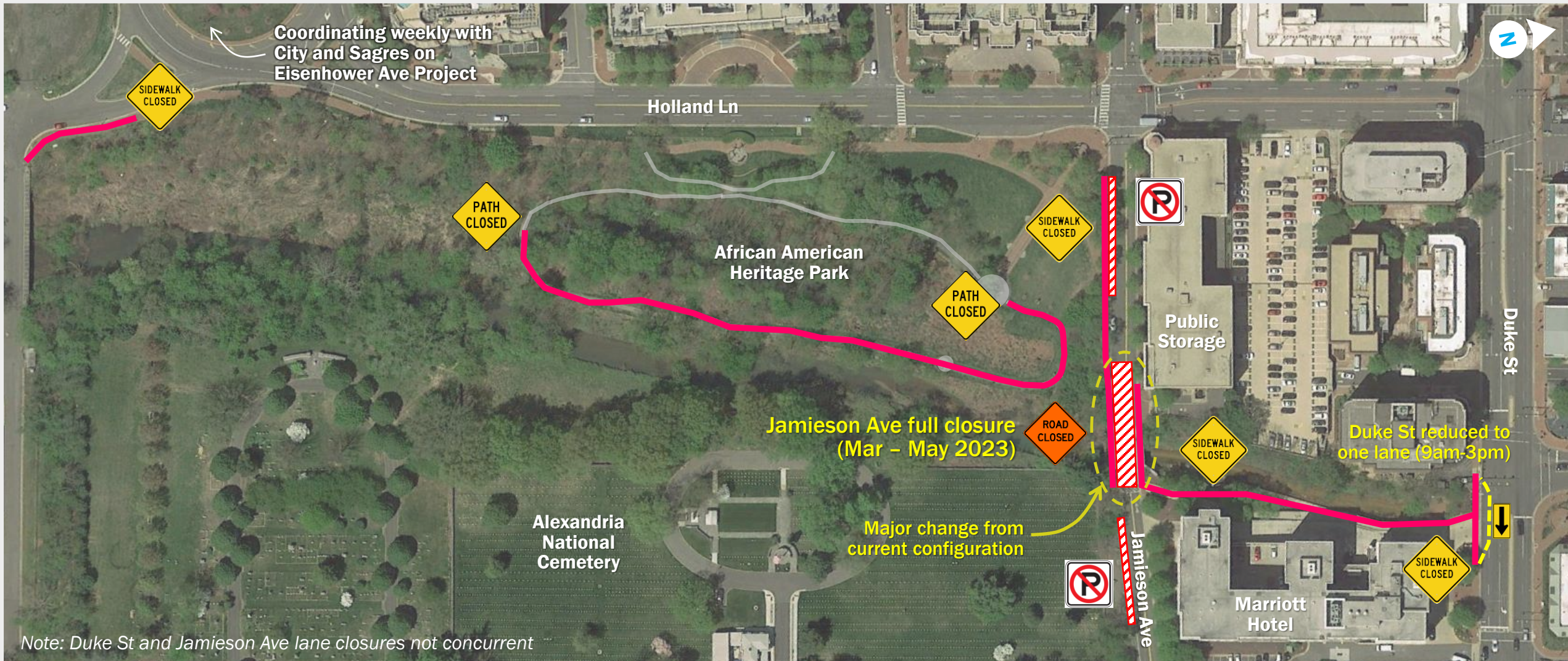


◀ African American Heritage Park Site



◀ Jamieson Avenue Site

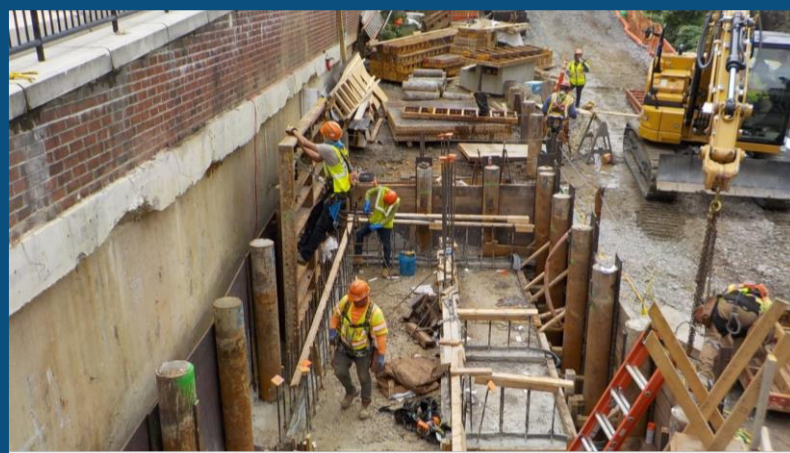
# Upcoming road and sidewalk changes associated with Hooffs Run Interceptor (March – May 2023).



# Major construction activities in the next 6 months at Jamieson Avenue Site.

Nov	Dec	Jan	Feb	Mar	Apr
Diversion Chamber	Open-Cut	Diversion Chamber and Junction Chamber		★	Open-Cut

*Jamieson Avenue full closure*



**7am-6pm**  
Mon-Fri

Lane and sidewalk closures:  
Duke St and Jamieson Ave

**30 trucks/day**

**Diversion Chamber Construction**



**7am-6pm**  
Mon-Fri

Lane and sidewalk closures:  
Duke St and Jamieson Ave

**10 trucks/day**

**Open-Cut Construction**



**7am-6pm**  
Mon-Fri

Lane and sidewalk closures:  
Duke St and Jamieson Ave

**30 trucks/day**

**Diversion Chamber and  
Junction Chamber Construction**



*Note: Pictures representative of upcoming construction work*

# Major construction activities in the next 6 months at African American Heritage Park Site.

Nov	Dec	Jan	Feb	Mar	Apr
-----	-----	-----	-----	-----	-----

Junc. Chamber Manholes and Open-Cut Construction



**7am-6pm**  
Mon-Fri

Sidewalk closures (intermittent):  
Jamieson Ave, Holland Ln  
Parking restrictions (24/7): Jamieson  
Path closures (24/7): AAHP

**30 trucks/day**

**Junction Chamber Construction**



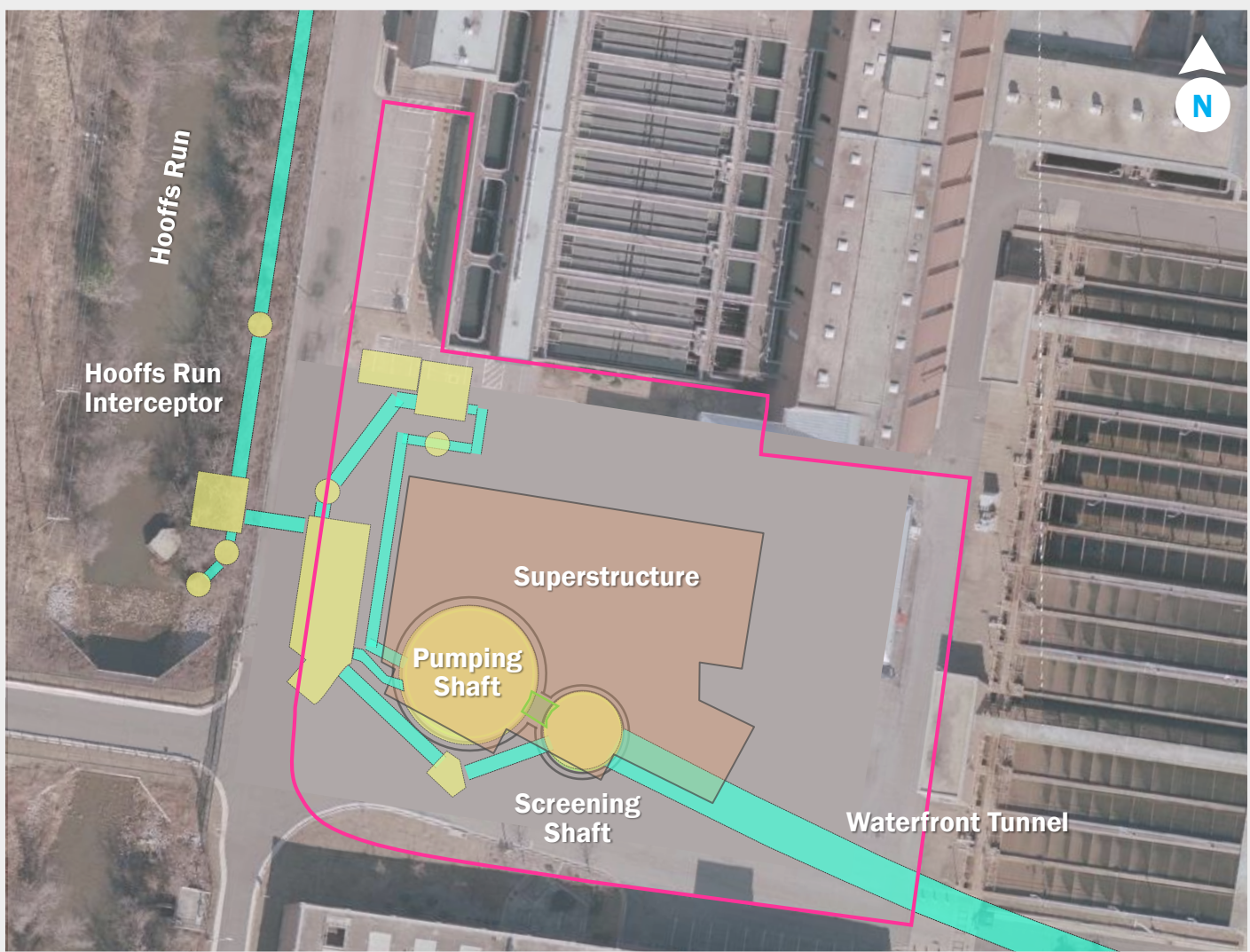
**7am-6pm**  
Mon-Fri

Sidewalk closures (intermittent):  
Jamieson Ave, Holland Ln  
Parking restrictions (24/7): Jamieson  
Path closures (24/7): AAHP

**30 trucks/day**

**Manholes and Open-Cut Construction**

# AlexRenew design and construction update.

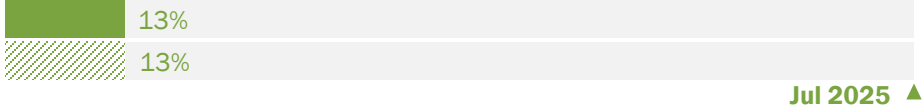


### Design Progress

■ Actual ▨ Planned As of Sep 30, 2022



### Construction Progress



### Major Activities

- TBM lowered into shaft and assembly ongoing
- Near surface structure support of excavation started



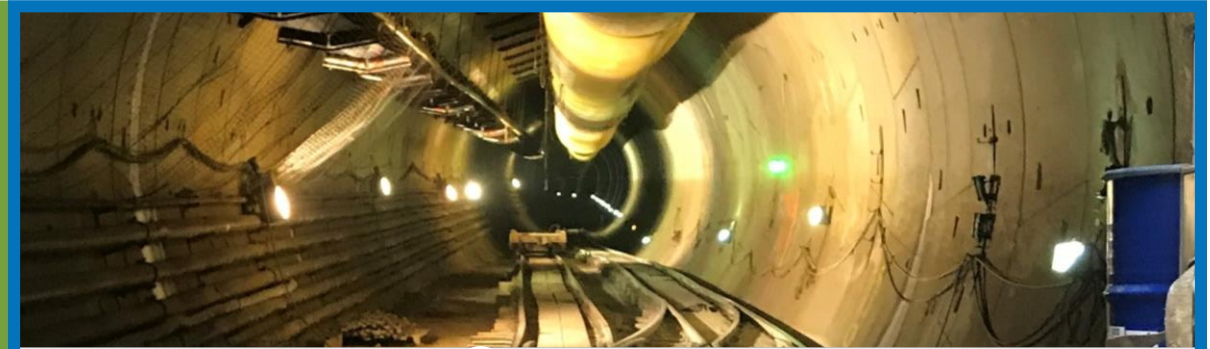
Hazel, the TBM, is scheduled to launch on October 27!



Click the play  
button to watch  
the video

# Major construction activities in the next 6 months at AlexRenew Site.

**!** Variance  
(see Slide 4)


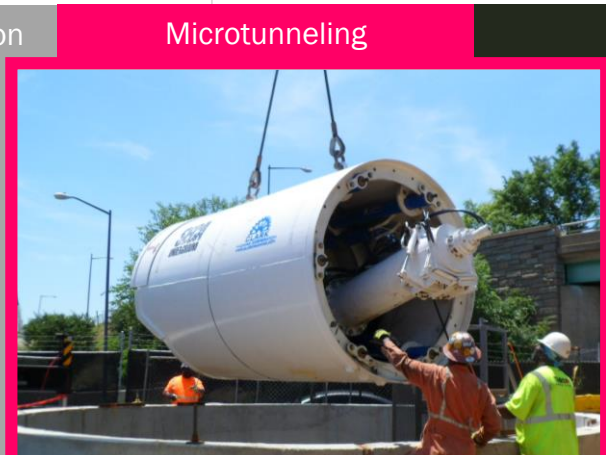
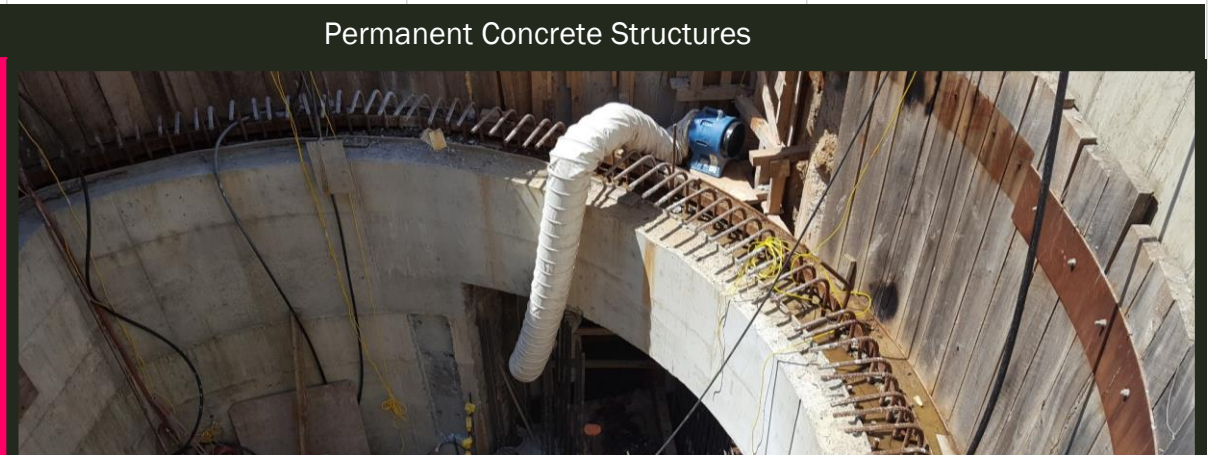
 <p><b>Waterfront Tunnel</b></p> <p><b>!</b> 24 hours/day 7 days/week (Hauling 7a.m.–6p.m.) 50 trucks/day</p>	 <p><b>!</b> 24 hours/day 7 days/week (Hauling 7a.m.–6p.m.) 30 trucks/day</p>	 <p><b>!</b> 24 hours/day 7 days/week (Hauling 7a.m.–6p.m.) 120 trucks/day</p>
---	---	---

TBM Initial Drive

Conveyor Install

Tunneling

Nov	Dec	Jan	Feb	Mar	Apr
-----	-----	-----	-----	-----	-----

<p>Near Surface Struct. Support of Excavation</p>  <p><b>Hooffs Run Interceptor &amp; Pumping Station</b></p> <p>7a.m.–6p.m. Mon–Fri 50 trucks/day</p>	<p>Microtunneling</p>  <p><i>*Potential Variance</i> 7a.m.–6p.m. Mon–Fri 50 trucks/day</p>	<p>Permanent Concrete Structures</p>  <p>7a.m.–6p.m. Mon–Fri 30 Trucks/day</p>
---	---	--



# Community Outreach Update

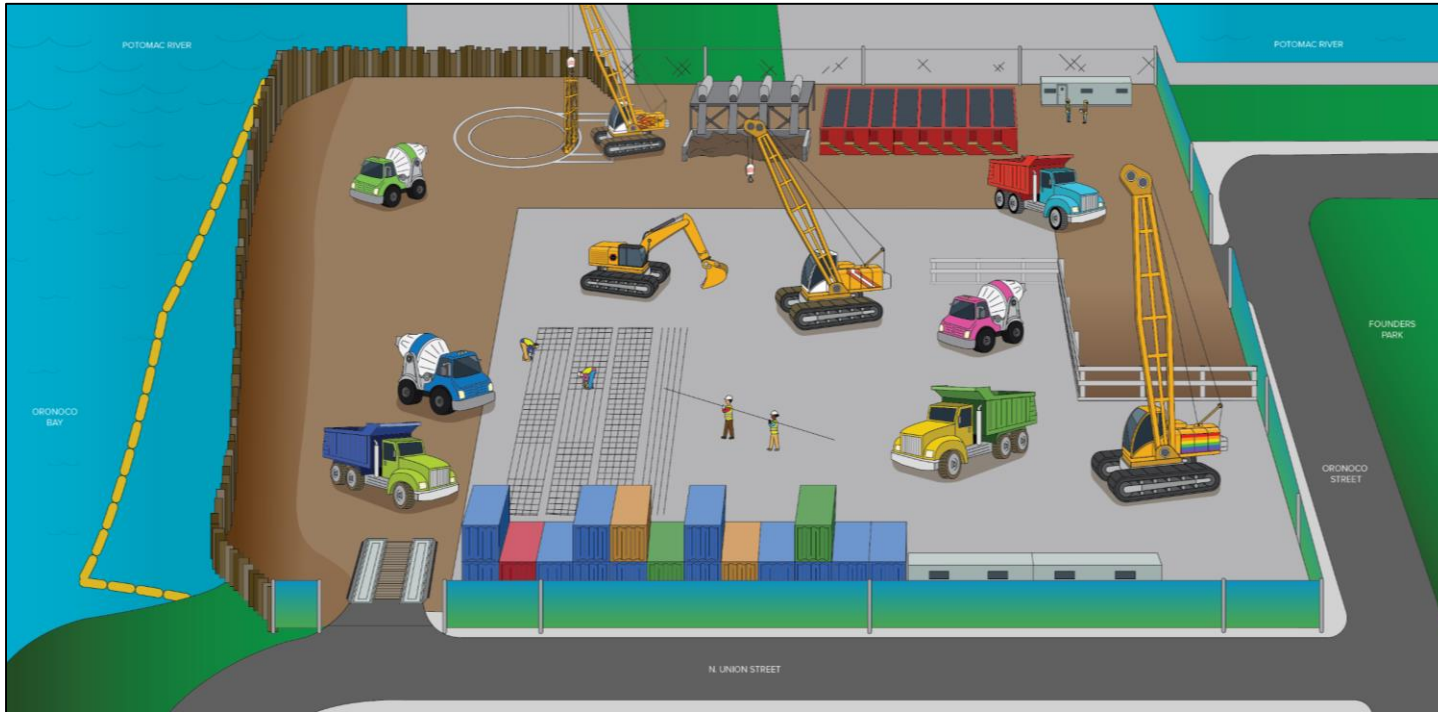
---



# Collaborating with Mr. Myers on historical wayfinding signage at African American Heritage Park and Pendleton Street.



# Upcoming community outreach.



 **Imagine a Day Without Water**

**Market Square**  
**301 King St**  
**October 20**

**Sip 'n See Events**  
Hooffs Run: Tues 11-1  
Royal St: Weds 11-1  
Pendleton St: Thursdays 11-1



**2022-23 Stakeholder Advisory Group Meeting**

- November 17



