

RS 175

Digital Wireless Headphone System

Model: RS 175, TR 175, HDR 175





Instruction Manual



Important safety instructions

- ▶ Read this instruction manual carefully and completely before using the product.
- ▶ Always include this instruction manual when passing the product on to third parties.
- ▶ Do not use an obviously defective product.
- ▶ Only use the product in environments where wireless 2.4 GHz transmission is permitted.

Preventing damage to health and accidents

- ▶ Protect your hearing from high volume levels. Permanent hearing damage may occur when headphones are used at high volume levels for long periods of time. Headphones of the Sennheiser brand sound exceptionally even good at low and medium volume levels. 
- ▶ Do not use the product in an environment that requires your special attention (e.g. when performing skilled jobs).
- ▶ The product generates stronger permanent magnetic fields that could cause interference with cardiac pacemakers, implanted defibrillators (ICDs) and other implants. Always maintain a distance of at least 3.94"/10 cm between the product component containing the magnet and the cardiac pacemaker, implanted defibrillator, or other implant. 
- ▶ Do not use the product near water. Do not expose the product to rain or moisture to reduce the risk of fire or electric shock.
- ▶ Keep the product, accessories and packaging parts out of reach of children and pets to prevent accidents. Swallowing and choking hazard.
- ▶ Only use the power supply units supplied by Sonova Consumer Hearing.

Preventing damage to the product and malfunctions

- ▶ Always keep the product dry and do not expose it to extreme temperatures to avoid corrosion or deformation. The normal operating temperature is from 0 to 40 °C/32 to 104 °F.
- ▶ Use the product with care and store it in a clean, dust-free environment.
- ▶ Do not use the product if it is obviously damaged, if it has been dropped, or if liquids or objects have entered the product. In this case, contact a qualified specialist workshop or your Sonova Consumer Hearing partner to have the product checked.
- ▶ Switch off the product after use to conserve battery power. When not using the product for extended periods of time, remove the rechargeable batteries.
- ▶ Unplug the power supply unit from the wall socket
 - to completely disconnect the product from the power source,
 - during lightning storms or
 - when not using the product for long periods of time.

- ▶ Always ensure that the power supply unit is
 - in a safe operating condition and easily accessible,
 - properly plugged into the wall socket,
 - only operated within the permissible temperature range,
 - not exposed to direct sunlight for longer periods of time in order to prevent heat accumulation.
- ▶ Do not place your headphones on a glass dummy head, chair armrest or similar objects for long periods as this can widen the headband and reduce the contact pressure of the headphones.
- ▶ Varnish or furniture polish may degrade the feet of the transmitter, which could stain your furniture. You should therefore place the transmitter on a non-slip pad to avoid potential staining of furniture.
- ▶ Do not operate the product near heat sources.
- ▶ Clean the product only with a soft, dry cloth.
- ▶ Use only attachments/accessories/spare parts supplied or recommended by Sonova Consumer Hearing.

Intended use/Liability

This wireless headphone system is suitable for use with hi-fi systems, TV sets, and home cinema systems and supports both analog and digital signals simultaneously.

This product is intended for private domestic use only. It is not suitable for commercial use. This product is also not intended to be used with portable audio devices.

It is considered improper use when this product is used for any application not named in this instruction manual and the associated product documentation.

Sonova Consumer Hearing GmbH does not accept liability for damage arising from misuse or improper use of the product and its attachments/accessories.

Before putting the product into operation, please observe the respective country-specific regulations.

Safety instructions for rechargeable batteries



WARNING

If abused or misused, rechargeable batteries may leak. In extreme cases, they may even present a risk of:

- explosion,
- heat and fire development
- smoke and/or gas development
- damage to health and/or the environment

	Keep away from children.		Do not expose to moisture.
	Do not mutilate or dismantle.		Observe correct polarity.
	Pack/store charged rechargeable batteries so that the terminals cannot contact each other – danger of shorting out/fire hazard.		Switch rechargeable battery-powered products off after use.
	Only charge rechargeable batteries at ambient temperatures between 10 °C and 40 °C/50 °F and 104 °F.		Do not heat above 70 °C/158 °F, e.g. do not expose to sunlight or throw into a fire.
	When not using rechargeable batteries for extended periods of time, charge them regularly (about every 3 months).		When not using the product for extended periods of time, remove the rechargeable batteries.
	Only use rechargeable batteries and chargers supplied and/or recommended by Sonova Consumer Hearing.		Do not continue using defective rechargeable batteries and dispose of them immediately.
	Immediately remove rechargeable batteries from an obviously defective product.		Dispose of defective products with built-in rechargeable batteries at special collection points or return them to your specialist dealer to facilitate recycling.
	Do not charge standard batteries.		Do not mix standard and rechargeable batteries in the battery compartments.

The RS 175 digital wireless headphone system

The RS 175 wireless headphone system offers compelling features that let you enjoy music and movies even more intensely. With the dynamic bass boost and the two surround modes of the RS 175, you can fully exploit the sound potential of your home entertainment system: The dynamic bass boost enhances the bass response, while the two surround sound modes create a more spacious and vibrant stereo sound in the headphones.

In addition, the RS 175's innovative digital wireless technology provides crystal-clear, high-fidelity audio as you move from room to room. The headphone system is simple to install and easy to use. The main operating controls are located right on the headphones, so there's nothing to distract you from an exciting home entertainment experience. The ergonomic design of the headphones ensures excellent wearing comfort for hours on end.

The Sennheiser RS 175: Home entertainment is now even more entertaining!

Features

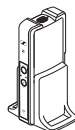
- Closed, circumaural headphones with excellent digital wireless audio transmission
- Exceptional digital audio clarity and transmission range of up to 100 m/328 ft (line of sight)
- Adjustable dynamic bass boost and two surround sound modes for individual sound customization
- Supports analog and digital audio inputs and allows toggling between the inputs
- Intelligently designed controls for maximum ease of use
- Multi-purpose transmitter – also functions as “easy-charge” cradle and docking station
- Multi-receiver transmission – transmitter supports up to two pairs of headphones simultaneously
- Ergonomic design for enhanced wearing comfort
- 2-year warranty



Package contents



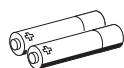
Headphones
Model: HDR 175



Transmitter
Model: TR 175



Power supply unit with country adapters
(EU, UK, US, AU)
Model: NT9-3AW



Low self-discharge NiMH rechargeable batteries,
AAA size



Optical digital cable, 1.5 m



Stereo audio cable with 3.5 mm jack plugs, 2 m



Quick guide



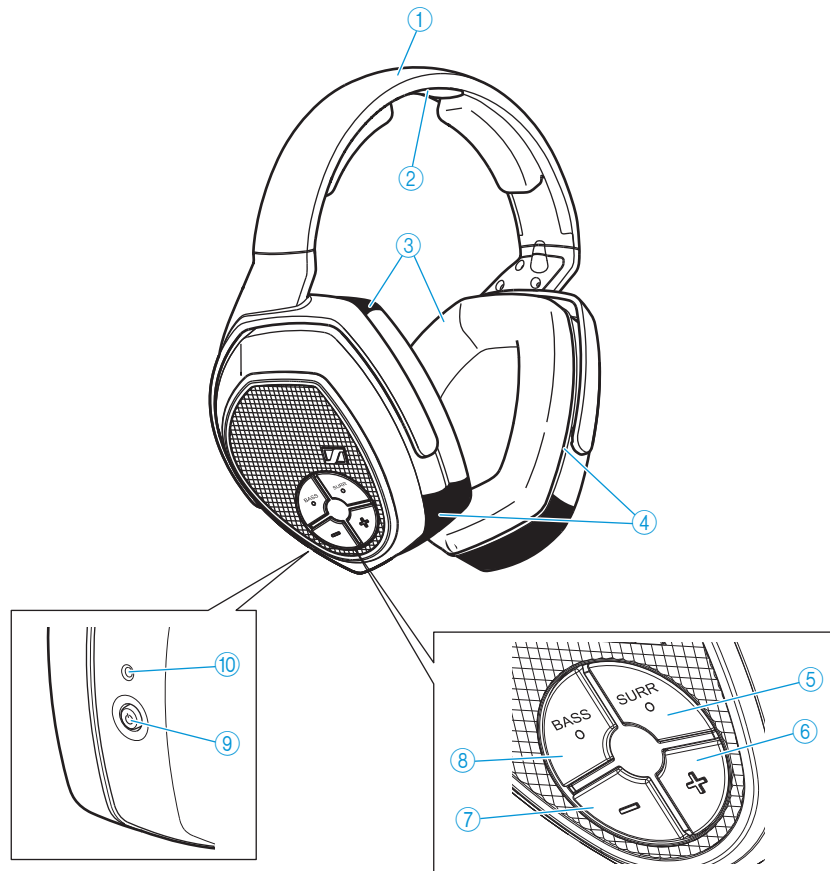
Safety guide


Overview of accessories

A list of accessories can be found on the RS 175 product page at www.sennheiser-hearing.com. Contact your local Sonova Consumer Hearing partner: www.sennheiser-hearing.com/service-support).

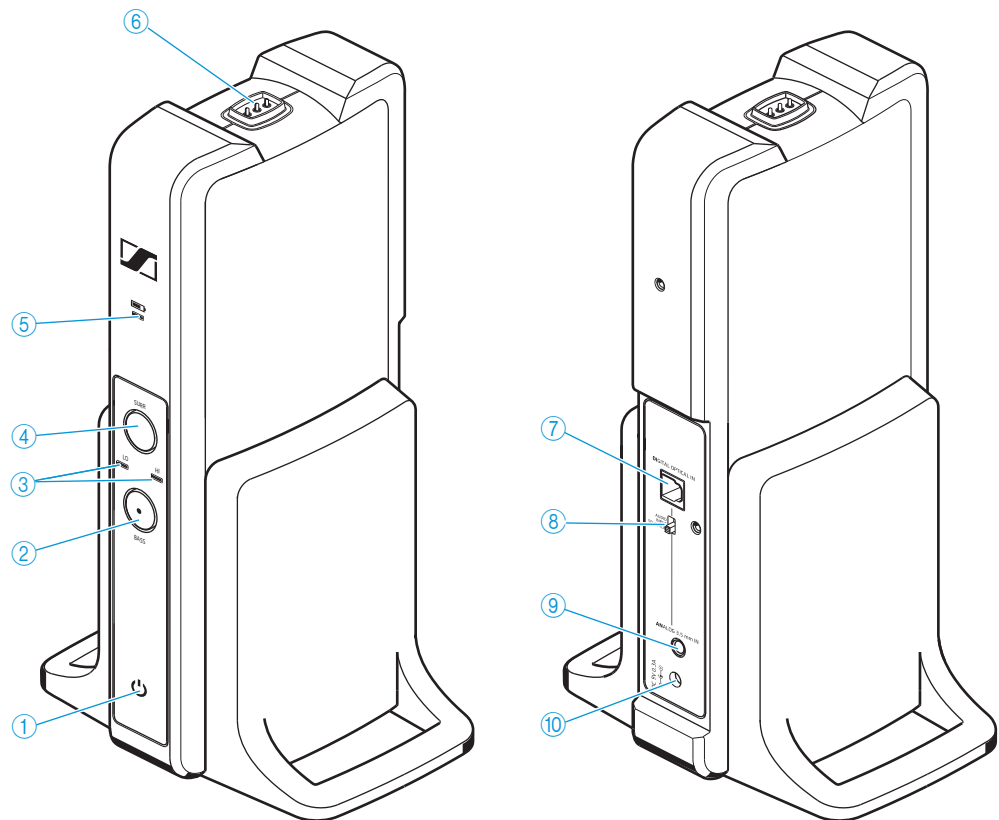
Product overview



Overview of the HDR 175 headphones



- ① Headband
- ② Charging contacts
- ③ Ear pads
- ④ Ear cups/Battery compartments
- ⑤ **SURR** button for virtual surround sound
- ⑥ Volume + button
- ⑦ Volume - button
- ⑧ **BASS** button
- ⑨ Power HDR button 
- ⑩ HDR status LED

Overview of the TR 175 transmitter

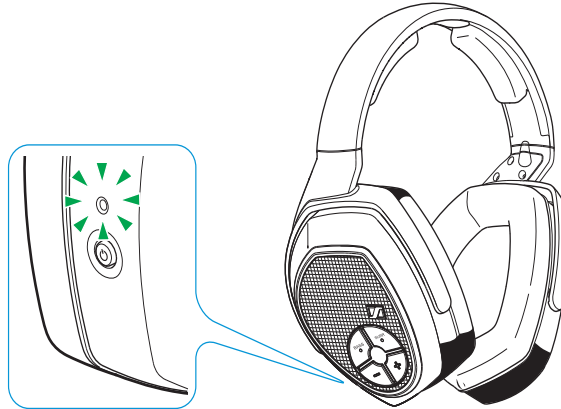


- ① TR status LED 
- ② BASS button (with LED)
- ③ Surround sound LEDs, low LO and high HI, indicate the selected surround sound mode
- ④ SURR button for virtual surround sound
- ⑤ Charge status LED 
- ⑥ Charging contacts
- ⑦ Digital optical audio input DIGITAL OPTICAL IN
- ⑧ Audio input switch AUDIO INPUT SELECTION
- ⑨ Analog audio input ANALOG 3.5 mm IN (3.5 mm jack socket)
- ⑩ DC 9V 0.3A connection socket for the power supply unit

Overview of the displays

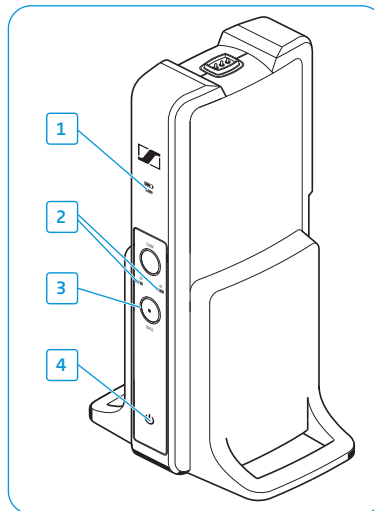
The LEDs on the headphones and on the transmitter indicate the current operating state. If you are not using the headphones, the LEDs automatically dim after approx. 30 seconds to not disturb you.

Overview of the LED on the headphones



HDR status LED	Meaning
	The headphones are switched off.
	The headphones and the transmitter are connected.
	The headphones and the transmitter are connected and the rechargeable batteries are almost empty.
	The headphones are not connected or cannot connect to the transmitter.
	The headphones are not connected or cannot connect to the transmitter and the rechargeable batteries are almost empty.

Overview of the LEDs on the transmitter



1	Charge status LED	Meaning
		The transmitter is not charging.
		The rechargeable batteries are being charged.
		The rechargeable batteries are fully charged.
		A charging error/battery error has been detected.

When you remove the headphones from the transmitter’s headphone holder, the Charge status LED on the transmitter indicates the approximate operating time of the headphones:

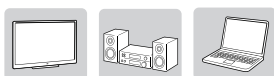
Charge status LED	Operating time	Battery capacity
	up to 4 hours	0–25 %
	approx. 4 to 9 hours	25–50 %
	approx. 9 to 14 hours	50–75 %
	approx. 14 to 18 hours	75–100 %

2	Surround sound LED	Meaning
		The virtual surround sound is deactivated.
		LO: The surround sound mode “low” is activated. HI: The surround sound mode “high” is activated.

3	BASS LED	Meaning
	○	The dynamic bass boost is deactivated.
	—	
	⚙️	The dynamic bass boost is activated.
4	TR status LED ⏻	Meaning
	⚙️ ○	The transmitter is connected to the power supply system.
	— 1 s	
	○	The transmitter is in standby mode.
	⚙️	The transmitter and the headphones are connected.
	⚙️⚙️⚙️ ○ ○ ○ ○ ⚙️⚙️⚙️	The transmitter has detected an incompatible digital audio signal (see page 27).
	— 1.5 s 1.5 s	

Putting the RS 175 into operation

Setting up the transmitter



- ▶ Place the transmitter near your audio source.
- ▶ Place the transmitter at least 20"/50 cm away from other wireless devices in the room to avoid interference.
- ▶ Do not place the transmitter close to metal objects such as shelf bars, reinforced concrete walls, etc. as this can decrease the transmitter's range.



Connecting the transmitter to audio sources

You can simultaneously connect two audio sources (e.g. a TV and a stereo hi-fi system) to the transmitter. The transmitter features a digital as well as an analog audio input. If you connect two audio sources, you can toggle between them using the **AUDIO INPUT SELECTION** switch (see page 21).



i You can also refer to the video guides on how to connect your digital wireless headphone system to a TV: www.sennheiser-hearing.com/how-to-videos.

- ▶ Switch your audio source off before connecting the transmitter.
- ▶ Check the connection possibilities of your audio source (audio output, usually marked “OUT”).
- ▶ Select the corresponding connection cable and, if necessary, a suitable adapter.
- ▶ Depending on the connection possibility selected, go to the respective chapter and follow the instructions on how to connect the transmitter to an audio source.

Connection possibilities of the audio source		Connection cable	Page
A	Optical (digital)	Optical digital cable	13
B	3.5 mm or 6.3 mm/¼" jack socket (analog)	Stereo audio cable; in case of a 6.3 mm/¼" jack socket: with adapter 3.5 mm jack socket to 6.3 mm/¼" jack plug (to be ordered separately)	14
C	RCA sockets (analog)	Stereo audio cable with adapter 3.5 mm jack socket to 2 RCA connectors (to be ordered separately)	15

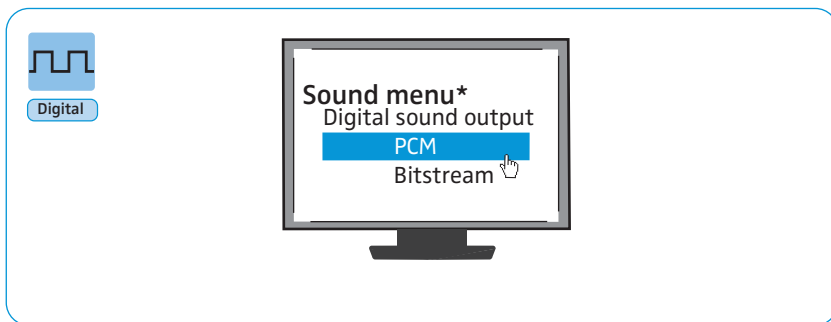
i Accessories and adapters are available from your Sonova Consumer Hearing partner.

A

Connection possibility A: optical (digital)

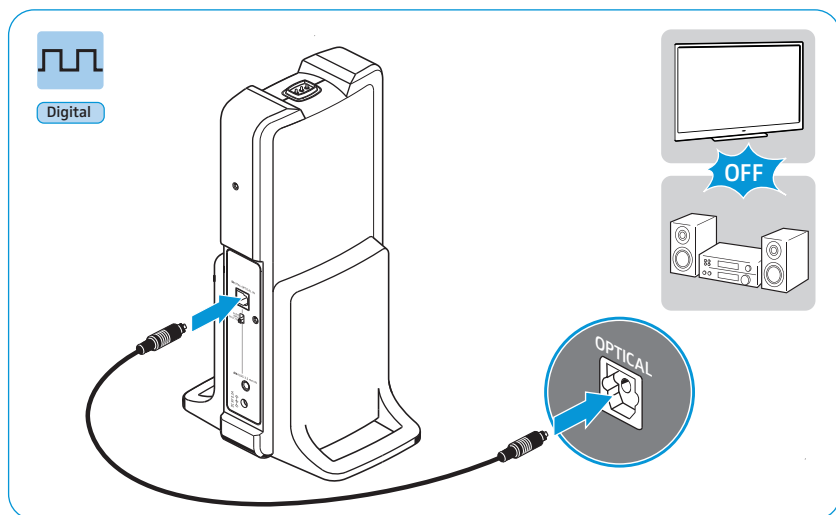
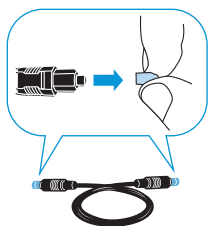
To achieve the best possible audio transmission, connect the transmitter to your home cinema or hi-fi system using the supplied optical digital cable.

Your wireless headphone system is able to decode digital audio signals from a device connected to the **DIGITAL OPTICAL IN** input. Note that your RS 175 only supports digital PCM signals. Information on how to set the audio format of the connected audio source to PCM can be found in the Sound menu or in the instruction manual of your device.



* The appearance of the Sound menu can vary depending on the device you are using.

- ▶ Switch your audio source off before connecting the transmitter.
- ▶ Pull off the clear protective caps from both plugs before connecting the cable.
- ▶ Connect one end of the optical digital cable to the **DIGITAL OPTICAL IN** input of the transmitter and the other end to the optical output of your audio source.

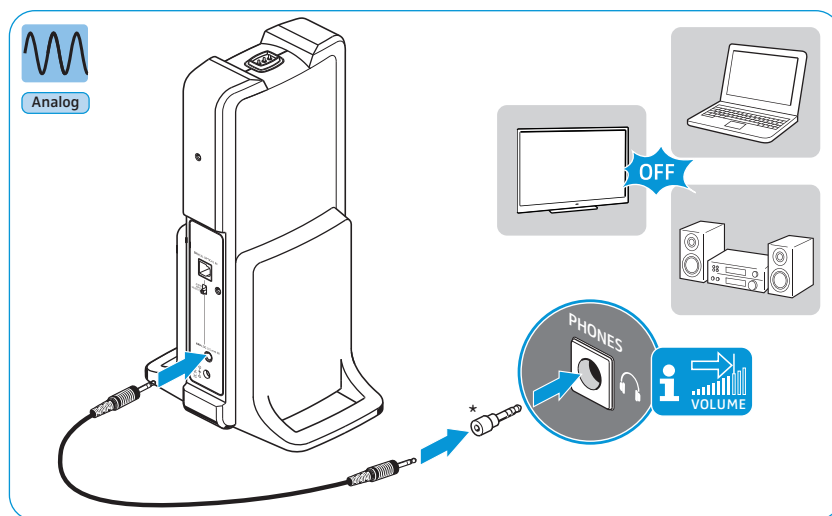


B

Connection possibility B: 3.5 mm or 6.3 mm/¼" jack socket (analog)

Some TV models mute the loudspeakers when you connect the transmitter to the headphone socket. Check the menu of your TV to see if the muting function can be deactivated. Alternatively, connect the TV and the transmitter using a different connection possibility (A or C).

- ▶ Switch your audio source off before connecting the transmitter.
- ▶ If necessary, plug the adapter 6.3 mm/¼" jack plug onto the stereo audio cable.
- ▶ Connect the stereo audio cable to the 3.5 mm jack socket of the transmitter and to the headphone socket of your audio source.



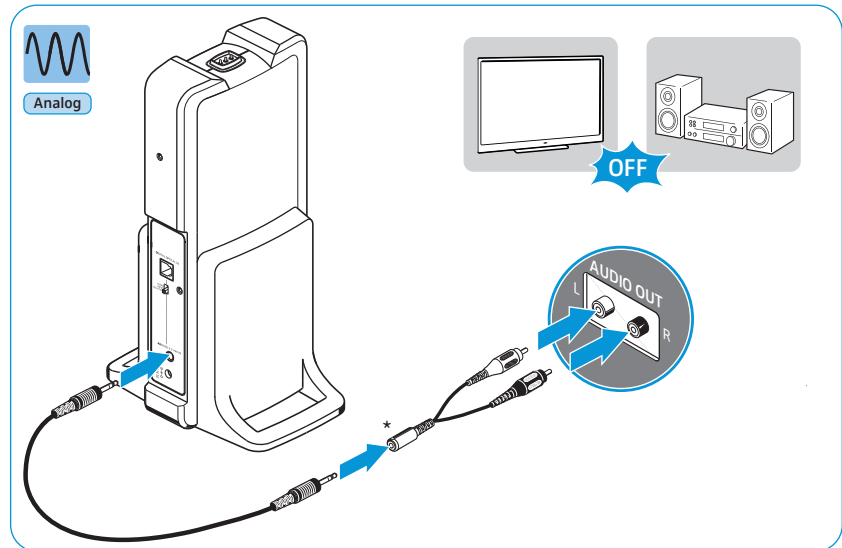
* optional accessory

i Adjust the volume of the headphone socket on your audio source to at least a medium level.

C


Connection possibility C: RCA sockets (analog)

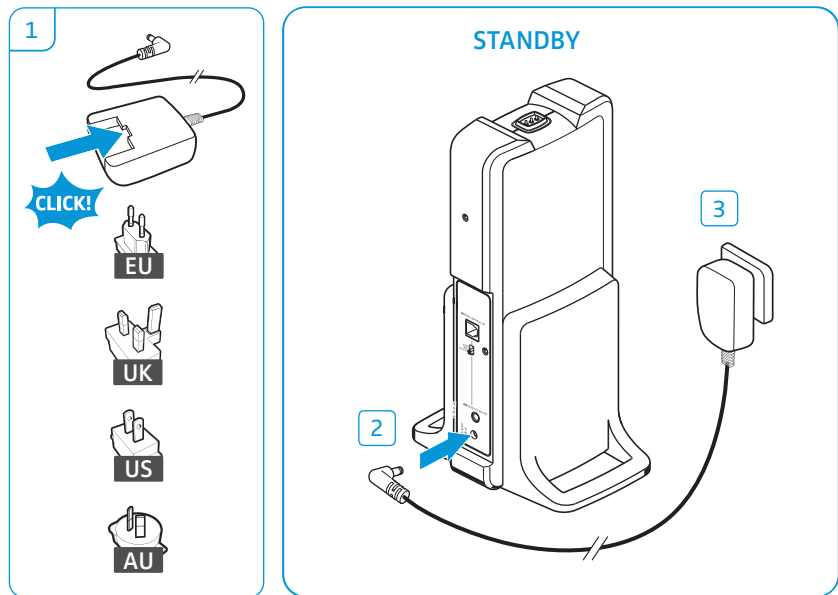
- ▶ Switch your audio source off before connecting the transmitter.
- ▶ Plug the RCA adapter onto the stereo audio cable.
- ▶ Connect the stereo audio cable to the 3.5 mm jack socket of the transmitter.
- ▶ Connect the RCA plugs to the RCA outputs of your audio source (usually marked “AUDIO OUT”). Connect the red plug to the red RCA socket and the white plug to the white or black RCA socket.



* optional accessory

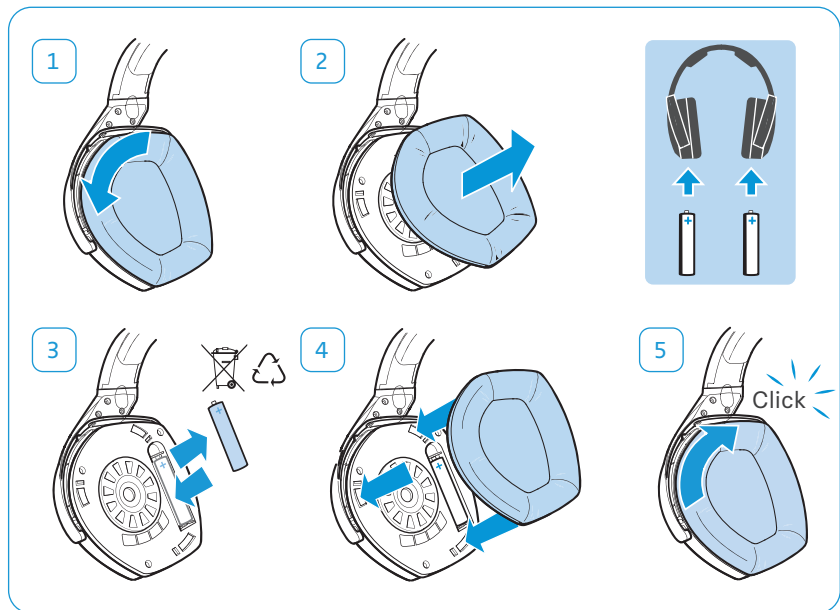
Connecting the transmitter to the power supply system

- 1 Select a suitable country adapter and slide it onto the power supply unit until it clicks audibly into place.
- 2 Connect the connector of the power supply unit to the connection socket of the transmitter.
- 3 Plug the power supply unit into the wall socket.
The TR status LED  on the transmitter lights up briefly. The transmitter is in standby mode.



Inserting or replacing the rechargeable batteries

- 1 Turn the two ear pads counterclockwise until you overcome a slight resistance.
- 2 Lift the ear pads off the ear cups to reveal the battery compartments.
- 3 Insert the rechargeable batteries into the battery compartments. To replace the batteries, pull the batteries out of the compartments and insert the new ones. Observe correct polarity when inserting the rechargeable batteries. Dispose of old rechargeable batteries as special waste or return them to your specialist dealer.
- 4 Place the two ear pads back on the ear cups. Observe the **L** (left) and **R** (right) markings on the rear of the ear pads.
- 5 Turn the two ear pads clockwise until they lock into place.



i You can also power the headphones using standard batteries (AAA size, 1.5 V). Note, however, that standard batteries are not rechargeable. Therefore, if you are using non-rechargeable batteries, do not place the headphones on the transmitter's headphone holder to charge them.

Charging the rechargeable batteries

CAUTION Danger of damage to the headphones!

If you insert non-rechargeable batteries into the battery compartments, the batteries may leak during charging and can damage your headphones.

- ▶ Do not place the headphones on the transmitter's headphone holder if you are using non-rechargeable batteries.

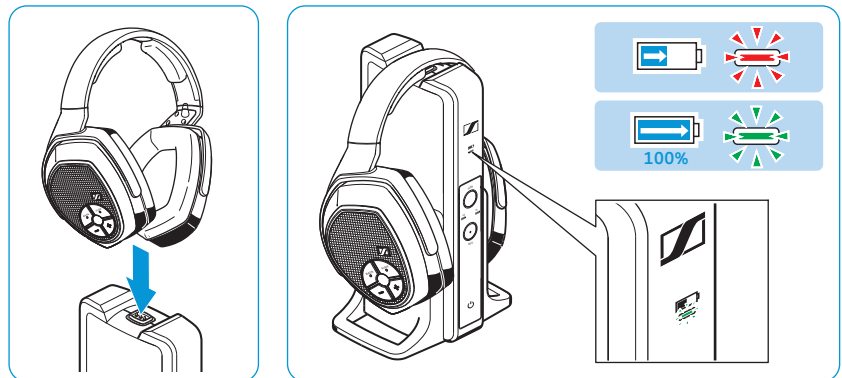


A complete charging cycle takes about 8.5 hours. However, before using the headphones for the first time, charge the rechargeable batteries for at least 16 hours without interruption to optimize the performance of the batteries.

When the rechargeable batteries are almost empty, the HDR status LED lights up red and you hear beeps in the headphones. The headphones switch off after a few minutes.

- ▶ Place the headphones on the transmitter's headphone holder. You may place the headphones on either side provided that the charging contacts of the headphones and the transmitter connect.

The headphones automatically switch off and the Charge status LED on the transmitter lights up red. When the rechargeable batteries are fully charged, the Charge status LED lights up green.



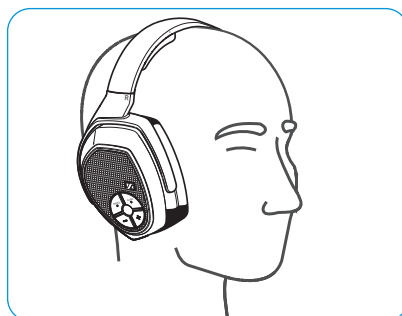
- i** When not in use, place the headphones on the transmitter's headphone holder to ensure that the rechargeable batteries are fully charged when needed. The intelligent battery charging technology prevents overcharging.

When you remove the headphones from the transmitter's headphone holder, the Charge status LED on the transmitter indicates the approximate operating time of the headphones (see page 10).

Adjusting the headband

For good sound quality and best possible wearing comfort, the headband has to be adjusted to properly fit your head. The headphones feature an adjustable headband with a snap-in locking mechanism for easy adjustment.

- ▶ Wear the headphones so that the headband runs over the top of your head. Observe the **L** (left) and **R** (right) markings on the outer headband when putting the headphones on.
- ▶ Adjust the length of the headband so that
 - your ears are comfortably covered by the ear pads,
 - you feel even, gentle pressure around your ears,
 - a snug fit of the headband on the head is ensured.



Using the RS 175 wireless headphone system

Switching the wireless headphone system on



WARNING

Danger of hearing damage due to high volumes!

Listening at high volume levels can lead to permanent hearing defects.


- ▶ Before putting the headphones on and before toggling between your audio inputs, adjust the volume on the headphones to a low level. Toggling between the audio inputs may cause enormous volume jumps that can damage your hearing.
- ▶ Do not expose yourself to high volume levels for extended periods of time.



1 Switch your audio source on.

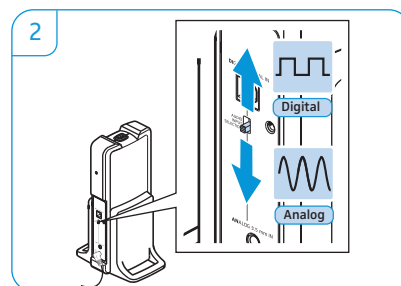
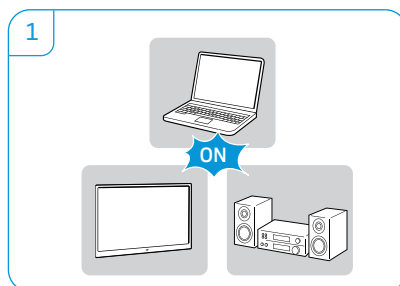
If the transmitter is connected to the headphone socket (see page 13) of your audio source, adjust the volume of the headphone socket on your audio source (e.g. TV) to at least a medium level.

2 Slide the **AUDIO INPUT SELECTION** switch on the transmitter up or down to select your audio source (see page 21).

The transmitter is in standby mode and the TR status LED  on the transmitter lights up green.

3 Press the Power HDR button on the headphones for approx. 2 seconds to switch the headphones on.

The transmitter recognizes the paired headphones and automatically transmits a signal. The TR status LED on the transmitter and the HDR status LED on the headphones light up green.

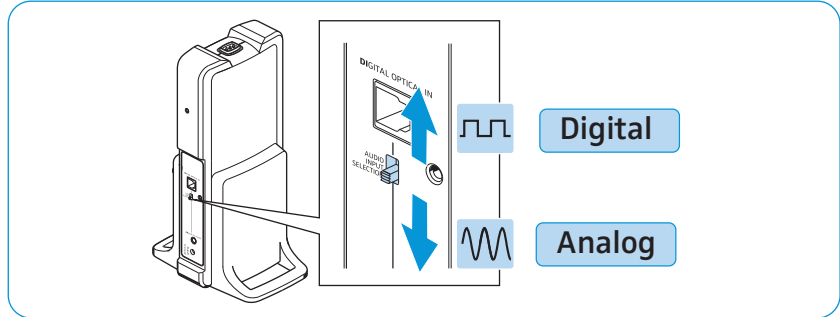


If the headphones are outside the transmission range or if there is no audio signal received from the transmitter for more than 5 minutes, the headphones switch off automatically.

Selecting an audio input

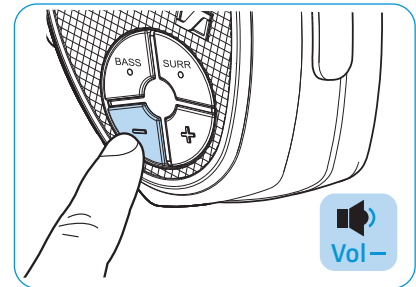
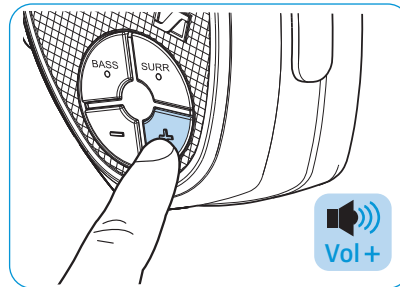
If both the analog and the digital audio input are connected to an audio source, you can toggle between the two audio inputs.

- ▶ Slide the **AUDIO INPUT SELECTION** switch up to select the digital (optical) audio input (see page 13).
- ▶ Slide the **AUDIO INPUT SELECTION** switch down to select the analog audio input (see page 14 and 15).





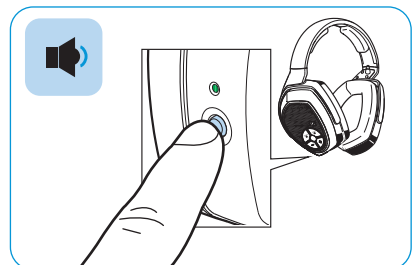
Adjusting the volume


- ▶ Press the Volume + button or the Volume – button repeatedly until the volume is adjusted to the desired level. When the minimum or maximum volume is reached, you hear a beep in the headphones.



Muting/unmuting the headphones

- ▶ Press the Power HDR button  to mute the headphones.
- ▶ Press the Power HDR button  or one of the Volume +/- buttons to cancel the muting.



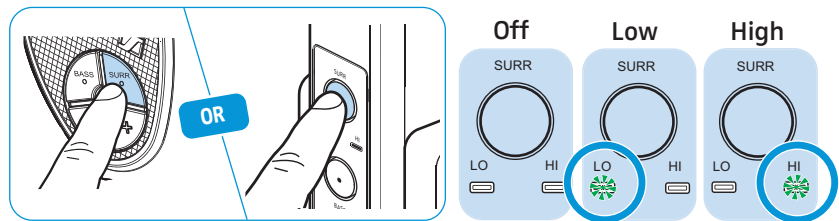
 If the headphones are muted for more than 15 minutes, they switch off automatically.

Activating/deactivating the virtual surround sound

The RS 175 offers two virtual surround sound modes (high **HI**/low **LO**) that simulate external stereo speakers to create a more spacious and vibrant sound in the headphones.

The two modes differ in the intensity of the generated surround sound effect. According to your personal preferences, you can choose between the surround sound modes “high” (**HI**) and “low” (**LO**).

- ▶ Press the **SURR** button on the headphones or on transmitter to toggle between “surround sound deactivated” and the two surround sound modes. The **LO** and **HI** LEDs indicate the selected mode.

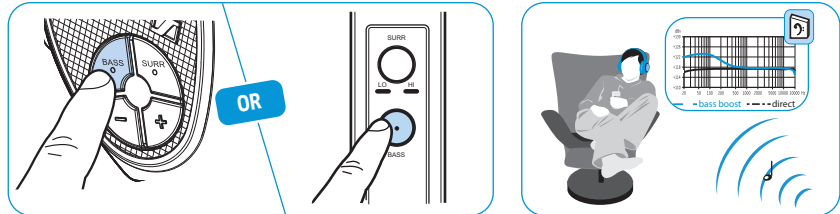




Surround sound LED	Meaning
	The virtual surround sound is deactivated.
	LO : The surround sound mode “low” is activated.
	HI : The surround sound mode “high” is activated.

Activating/deactivating the dynamic bass boost

The dynamic bass boost enhances the bass response.

- ▶ Press the **BASS** button on the headphones or on the transmitter to activate and deactivate the bass boost. The **BASS** LED lights up when the dynamic bass boost is activated.




BASS LED	Meaning
 <p>A green LED icon with a circular pattern of light rays, labeled 'BASS' below it.</p>	The dynamic bass boost is activated.
 <p>A simple circular LED icon, labeled 'BASS' below it.</p>	The dynamic bass boost is deactivated.

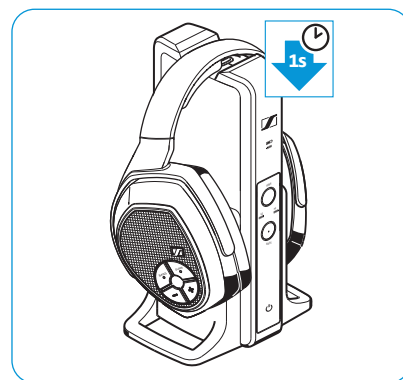
Pairing one or two pairs of headphones with the transmitter

The headphones and the transmitter of your wireless headphone system are factory pre-paired. The following procedure is only necessary if you have cleared all pairing settings from your wireless headphone system and want to re-establish the pairing, or if you want to pair another pair of headphones with the transmitter.

You can simultaneously connect up to 2 paired headphones to your TR 175 transmitter.

- ▶ Place the headphones on the headphone holder of the transmitter for one second.


The Charge status LED  on the transmitter lights up red. The headphones are paired with the transmitter.

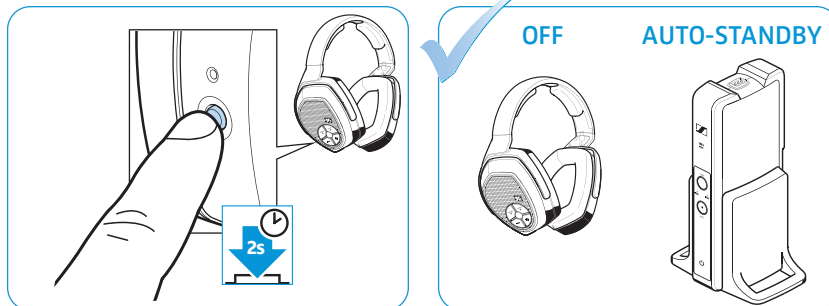


Switching your wireless headphones off

There are two ways to switch your wireless headphones off:

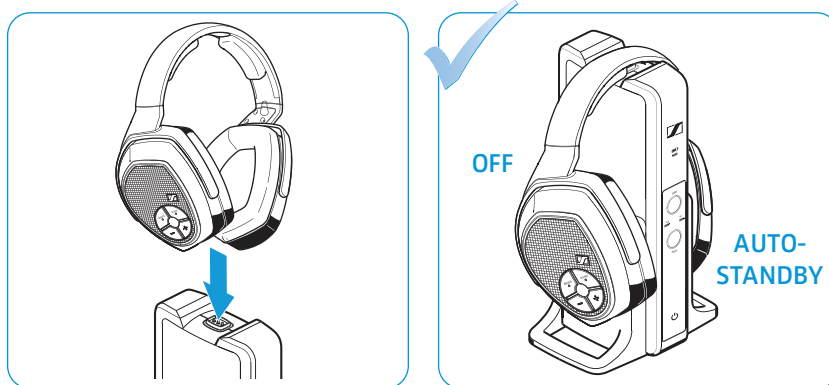
A

- ▶ Press the Power HDR button  on the headphones for approx. 2 seconds.
The headphones switch off. If no other pair of headphones is connected to the transmitter, the transmitter switches to standby mode. All LEDs go off.



B

- ▶ Place the headphones on the transmitter's headphone holder. The headphones switch off and the charging process starts (see page 18). If no other pair of headphones is connected to the transmitter, the transmitter switches to standby mode.



- i** To disconnect the transmitter from the power supply system, unplug the power supply unit from the wall socket.

Cleaning and maintaining the RS 175

CAUTION

Liquids can damage the electronics of the product!

Liquids entering the housing of the product can cause a short-circuit and damage the electronics.

- ▶ Keep all liquids far away from the product.
- ▶ Do not use any solvents or cleansing agents.

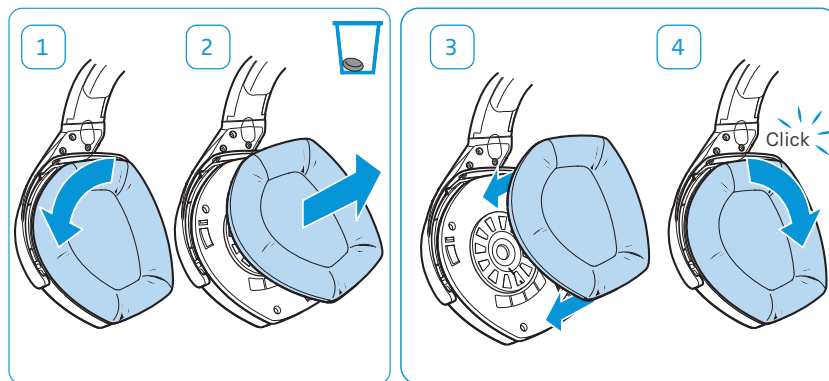
To clean the wireless headphone system:

- ▶ Switch your wireless headphone system off and disconnect the transmitter from the wall socket before cleaning.
- ▶ Clean the product only with a soft, dry cloth.

Replacing the ear pads

For reasons of hygiene, you should replace your ear pads from time to time. Spare ear pads are available from your Sonova Consumer Hearing partner.

- 1 Turn the two ear pads counterclockwise until you overcome a slight resistance.
- 2 Lift the ear pads off the ear cups and dispose of them properly.
- 3 Place the two new ear pads back on the ear cups. Observe the **L** (left) and **R** (right) markings on the rear of the ear pads.
- 4 Turn the two ear pads clockwise until they lock into place.



i The headband padding can be replaced by the repair service. Please contact your Sonova Consumer Hearing partner.

If a problem occurs ...

Sound problems

Problem	Possible cause	Possible solution	Page
No sound	Headphones are switched off.	Switch the headphones on.	20
	No power connection.	Check the connections of the power supply unit.	16
	Headphones are muted.	Deactivate the muting function.	21
	Audio plug is not properly connected.	Check the audio plug connection.	12
	Audio source is switched off.	Switch the audio source on.	–
	Volume of the analog audio source is either set to the minimum or is on mute.	Increase the volume on the audio source to at least a medium level/ deactivate the muting function on the audio source.	–
	Audio cable is defective.	Replace the audio cable.	–
	Headphones are not correctly paired with the transmitter (e.g. additional headphones).	Pair the headphones with the transmitter again.	24
	Wrong audio input is selected.	Select the other audio input.	21
	Digital audio connection uses incompatible data transmission settings.	Set the audio format of your audio source to “PCM”, with a sampling rate of max. 96 kHz (see the instruction manual of the audio source).	–
Occasional sound drop-outs	Headphones are out of the transmitter’s range.	Reduce the distance between the headphones and the transmitter.	–
	The signal is shielded.	Remove obstacles between the transmitter and the headphones.	–
	There are interfering devices (e.g. WiFi routers, Bluetooth devices or microwaves) in the vicinity.	Change the position of the transmitter or of the headphones.	11
		Ensure that the transmitter is separated from other wireless devices by at least 50 cm/20”.	–
Sound too low	Headphone volume is adjusted too low.	Increase the volume on the headphones.	21
	The volume of the analog audio source is adjusted too low.	Increase the volume of the analog audio source to at least a medium level.	–
You hear echoes when using the headphones with a TV	On some TVs, a delay or latency can be set for the digital audio output signal.	Check the audio output settings of your TV and set the latency to “0”.	–
Sound only on one ear	The audio cable is not properly connected.	Check the audio plug connection.	12
	The audio cable is defective.	Replace the audio cable.	–
Sound is distorted	The signal of the audio source is distorted.	Reduce the volume of the audio source.	–
	The volume on the headphones is adjusted too high.	Reduce the volume on the headphones.	21
	The volume of the analog audio source is adjusted too high.	Reduce the volume of the analog audio source to a medium level.	–

Other problems

Problem	Possible cause	Possible solution	Page
Transmitter does not switch on	No power connection.	Check the connections of the power supply unit.	16
Headphones do not switch on	The rechargeable batteries are empty.	Recharge the rechargeable batteries.	18
	No batteries inside the battery compartments.	Insert the rechargeable batteries.	17
	The rechargeable batteries are inserted the wrong way round.	Remove the rechargeable batteries from the headphones and reinsert them again. Observe correct polarity.	17
The operating time decreases	The rechargeable batteries are exhausted.	Replace the rechargeable batteries with new ones.	17
You hear beeps in the headphones	The rechargeable batteries are almost empty.	Recharge the rechargeable batteries.	18
Headphones cannot be connected to the transmitter	Distance to the transmitter is too large.	Reduce the distance to the transmitter.	–
	Headphones are not paired with the transmitter.	Pair the headphones with the transmitter.	24
	One pair of headphones is being charged so that you cannot pair a second pair of headphones with the transmitter.	Perform a proximity pairing: 1. Place the headphones as close as possible to the transmitter. 2. Switch the headphones on. 3. Press the Volume +/- buttons simultaneously for about 7 seconds.	–
	Headphones are not compatible.	Only use the following headphones of the Sennheiser brand: HDR 165, HDR 175, HDR 185, or HDR 195.	–

If a problem occurs that is not listed in the above table or if the problem cannot be solved with the proposed solutions, visit the RS 175 product page at www.sennheiser-hearing.com. There you will find a current list of frequently asked questions (FAQ).

You can also contact your Sonova Consumer Hearing partner for assistance. You can find your local Sonova Consumer Hearing partner at www.sennheiser-hearing.com/service-support.




Leaving the range of the transmitter

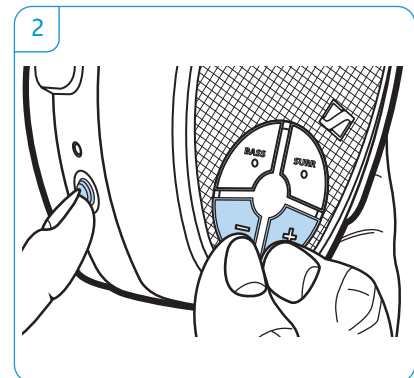
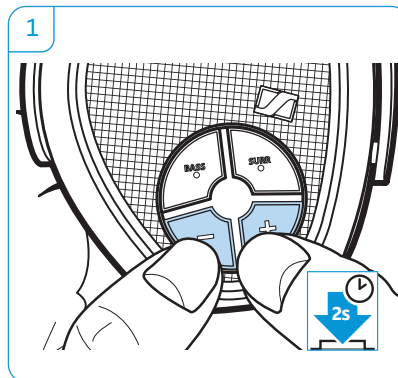
The range of the transmitter largely depends on environmental conditions such as wall thickness, wall composition etc. If you, and therefore the headphones, leave the transmission range of the transmitter, the sound drops out occasionally at first before the connection breaks down completely.

If you re-enter the transmission range within 5 minutes, the connection is automatically re-established.

If you spend more than 5 minutes outside the transmission range, the headphones switch off automatically.

Clearing the pairing settings from the headphones

- 1 Simultaneously press the Volume +/- buttons for 2 seconds. The HDR status LED flashes red rapidly.
- 2 Press the HDR power button  while holding the Volume +/- buttons pressed. Release all 3 buttons. The HDR status LED lights up green or red, depending on the battery condition, and starts flashing slowly. The pairing settings are cleared from the headphones.



Specifications

System – model: RS 175

Transmission frequency	2,406 to 2,474 MHz
Modulation	8-FSK Digital
Signal-to-noise ratio	analog input: typ. 85 dBA at 1 V _{rms} digital input: > 90 dBA
RF output power	max. 10 dBm
Range	up to 100 m (free line of sight)
Max. number of simultaneously connected headphones	2
Temperature range	operation: 0 °C to +40 °C storage: -25 °C to +70 °C
Relative humidity	operation: 10 to 80 %, non condensing storage: 10 to 90 %

Headphones – model: HDR 175

Type	circumaural, closed
Transducer principle	dynamic, neodymium magnets
Frequency response	17 Hz to 22 kHz
Max. SPL	max. 114 dB at 1 kHz, 3 % THD
THD	< 0.5 % at 1 kHz, 100 dB SPL
Operating time	up to 18 hours
Charging time of rechargeable batteries	up to 8.5 hours
Power supply	2 low self-discharge NiMH rechargeable batteries, AAA size, 1.2 V, 820 mAh
Magnetic field strength	2.7 mT
Weight (incl. batteries)	approx. 310 g
Dimensions (W x H x D)	approx. 17 cm x 20 cm x 9.5 cm

Transmitter – model: TR 175

Connections	digital input: optical analog input: 3.5 mm jack socket
Power supply	9 V --- , 300 mA
Power consumption	operation: typ. 4 W standby: ≤ 0.3 W (without charging)
Dimensions (W x H x D)	approx. 12.7 cm x 23.4 cm x 23 mm

Power supply unit – model: NT9-3AW

Nominal input voltage/ input current	100–240 V~ / 100 mA
Power frequency	50–60 Hz
Nominal output voltage	9 V ===
Nominal output current	300 mA
Temperature range	operation: 0 °C to +40 °C storage: -40 °C to +85 °C
Relative humidity	operation: 0 to 90 %, non condensing storage: 0 to 90 %

Manufacturer declarations

Warranty

Sonova Consumer Hearing GmbH gives a warranty of 24 months on this product.

For the current warranty conditions, please visit our website at www.sennheiser-hearing.com/warranty or contact your Sonova Consumer Hearing partner.

In compliance with the following requirements

EU declaration of conformity



- ErP Directive (2009/125/EC)
- RoHS Directive (2011/65/EU)

Hereby, Sonova Consumer Hearing GmbH declares that the radio equipment type RS 175 (TR 175, HDR 175) is in compliance with the Radio Equipment Directive (2014/53/EU).



The full text of the EU declaration of conformity is available at the following Internet address: www.sennheiser-hearing.com/download.

UK declaration of conformity



- Radio Equipment Regulations (2017)
- The Ecodesign for Energy-Related Products and Energy Information (Amendment) (EU Exit) Regulations (2019)
- RoHS Regulations (2012)

Notes on disposal



- WEEE Directive (2012/19/EU)
- Battery Directive (2006/66/EC & 2013/56/EU)

The symbol of the crossed-out wheeled bin on the product, the battery/rechargeable battery (if applicable) and/or the packaging indicates that these products must not be disposed of with normal household waste, but must be disposed of separately at the end of their operational lifetime. For packaging disposal, observe the legal regulations on waste segregation applicable in your country. Improper disposal of packaging materials can harm your health and the environment.

The separate collection of waste electrical and electronic equipment, batteries/rechargeable batteries (if applicable) and packaging is used to promote the reuse and recycling and to prevent negative effects on your health and the environment, e.g. caused by potentially hazardous substances contained in these products. Recycle electrical and electronic equipment and batteries/rechargeable batteries at the end of their operational lifetime in order to make contained recyclable materials usable and to avoid littering the environment.

If batteries/rechargeable batteries can be removed without damaging them, you are obliged to dispose of them separately (for the safe removal of batteries/rechargeable batteries, see the instruction manual of the product). Handle lithium-containing batteries/rechargeable batteries with special care, as they pose particular risks, such as the risk of fire and/or the risk of ingestion in the case of coin batteries. Reduce the generation of battery waste as much as possible by using longer-life batteries or rechargeable batteries.

Further information on the recycling of these products can be obtained from your municipal administration, from the municipal collection points, or from your Sonova Consumer Hearing partner. You can also return electrical or electronic equipment to distributors who have a take-back obligation. Herewith you make an important contribution to the protection of the environment and public health.

Sonova Consumer Hearing GmbH

Am Labor 1, 30900 Wedemark, Germany
www.sennheiser-hearing.com

Publ. 07/22, A06