



Mark II Assembly Manual Ver1.6

If you have questions that are not addressed in this manual, please email steve@eyedirect.tv

Introduction

Thank you for purchasing an EyeDirect® Focusing Device. The EyeDirect is extremely easy to use and as Philip Bloom, DP, Director/Filmmaker says, will become an "essential piece of kit for direct-to-camera interviews". Visit eyedirect.tv on the web for videos of the amazing results.

Package Check List

EyeDirect Mark II

- ☐ adjustable, sliding 18 inch (45cm) base plate, consisting of base slider with both 3/8x16 and 1/4x20 fastener holes and 18" top plate with slotted holes for camera balance adjustment
- ☐ 4- 1/4x20x 1/2" knobs to secure bottom sled to top plate
- ☐ EyeDirect Box; swing out wing to accept Edison (conventional) mirror assembly, optical quality beam splitter
- ☐ Edison Mirror assembly; ABS plastic frame hardware; 1/4x20 (standard) Fastener knob
- ☐ Rubber donut; to mask light from between lens and EyeDirect lens port opening.
- ☐ iPad® 2 holder with hook and loop fastening strips; to convert the device into a teleprompter/autocue.
- ☐ Optional 2.25 in. (57mm) riser; to lift Canon C300, DSLRs and other low lens mount profiles to center of EyeDirect lens port opening
- ☐ Optional SKB iSeries 2217-10 Waterproof case with custom cut foam insert

*"Essential piece
of kit for direct-
to-camera
interviews"*

*Philip Bloom, DP,
Director/Filmmaker*

Getting Started with the EyeDirect Mark II

After the initial fitting of your camera to the EyeDirect, the setup time will be greatly reduced. This unit has many adjustment options and this manual will assume a few common elements to help with this initial fitting. We will assume you are setting up a professional camera, with a separate interviewer and not a one-person-crew.

- 1) Release the elastic cord that holds the (Edison) mirror assembly tightly against the beam splitter.
 - a. 50/50 Beam splitter measurement is 349mm x 157mm x 3mm
 - b. Both glass surfaces should be cleaned and handled as you would a nice camera filter
- 2) Use elastic cord as pictured, to secure the Edison mirror into place during travel.
 - a. When packing for travel it may be necessary to remove beam splitter to avoid breakage.
- 3) Confirm mirrors were not damaged in transit. (WARNING: IF GLASS IS BROKEN, BE EXTREMELY CAREFUL OF VBROKEN GLASS DANGER)
- 4) Swing open the WING. The WING will hold the Edison mirror assembly in place and allow for vertical and horizontal adjustment for the interviewer's site line and comfort.



- 5) EDISON mirror slides into the open WING and fastens in place with a 1/4x20 tie down screw.

a. A foam block is a light weight, vibration suppression device.



- 6) Tighten enough to hold in place, but resist tightening too much. Set unit to the side.

a. By design, the tie down screw is not to be overly torqued. It is tempting to move the Edison mirror by hand without loosening the fastener. This will often results in a broken mirror.

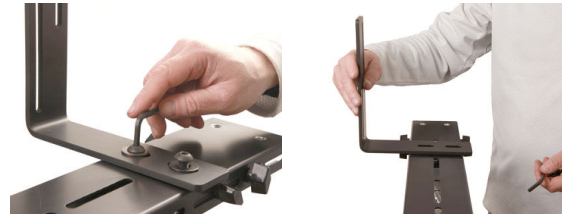
- 7) Determine initial desired adjustment of the base plate bottom sled. The base plate has multiple 3- 3/8x16 and 2- 1/4x20 tie down holes.

Later in this manual you will see how to balance the unit and make a base plate position selection before the entire unit is on top of the tripod. For all cameras, it is recommended to secure the base plate with more than one tie down bolts.



- 8) Orient the L Bracket to the adjustable base plate (as illustrated) to the left side. This configuration accommodates both a camera person and an interviewer. The interviewer would be on the right side as camera faces the subject.

- a. Use the included 7/32 (standard) Hex/Allen Key wrench to secure the L Bracket tie down bolts to the adjustable base plate.
- b. There is a 1/2 inch (12mm) adjustment to each side of center.
- c. Two pairs of 3/8x16 inch fastener holes are provided to allow the EyeDirect to be moved closer to the camera or further away to accommodate longer lenses.



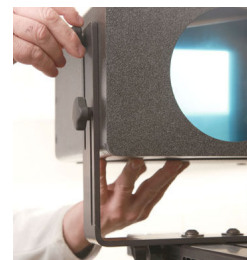
- 9) Attach the mirror box with 1/2 inch 1/4x20 tie down knobs (included).

a. **IMPORTANT:** Do not use a fastener that is longer than the enclosed 1/2 inch length... as the tip of the fastener may push through the black matte that protects the camera from recording a reflection of that fastener



- 10) For best results, the lens height needs to be at least 3.5 inches (9 centimeters) from the base of the camera to the center of the lens.

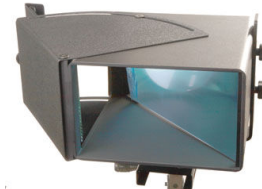
- a. A sliding base plate, quick release or optional EyeDirect riser may be needed to 'lift' the camera to this minimum height.
- b. C300, DSLRs and prosumer cameras all need to be lifted to optical center.
- c. (This height is required so the center of the lens will be in the center of the EyeDirect lens port hole.)
- d. The camera's lens center may up to 7 inches (177mm) high, as the EyeDirect has an additional 4.5 in (115mm) of vertical adjustment to accommodate.



- 11) The Edison Mirror may now be adjusted up or down to assist with eyeline and interviewer comfort.



- 12) The device comes with a protective plastic film on the beam splitter that must be removed before use.

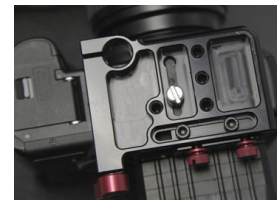
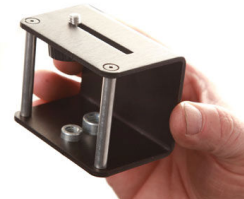


- 13) Observe how the EDISON mirror may be moved up or down... and the WING adjusted left and right... to optimize the viewing area to the subject.



- 14) When using a small camera, like a C300, DSLR or prosumer video camera with the 18 inch base plate, the optional 2.25 inch RISER will assist in putting the camera lens at optical center of the EyeDirect.

- a. *Additionally, there is left to right adjustment in the RISER to center DSLRs that have camera tie down holes that are off-optical-center.*
- b. *Third party devices can also put the camera tie down hole off center and the riser will compensate for that offset.*



C300 with riser



Canon Mark II with riser



Arri Alexa with 18-100 Cooke Cine Zoom on Arri sliding base plate

Note the L Bracket has been moved to the furthest position on the EyeDirect adjustable base plate to accommodate the longer lens footprint.

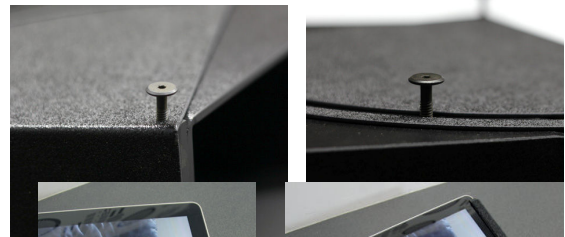
iPad® 2 Teleprompter/Autocue Accessory- (Mark II only)

With the addition of an included ABS plastic holder, the EyeDirect Mark II user may attach their personal iPad 2 and create a Teleprompter/Autocue. (Third party app software is required and not included.)

- 1) By removing the WING from the Mark II, this reveals hook and loop fastener strips to which the accessory may be attached.



- 2) Use included 5/32" hex/allen key wrench tool to remove 4- 1/4x20 fasteners on top and bottom of wing



- 3) Attach iPad accessory securely.
 - a. **IMPORTANT:** The hook and loop fastening system may be undermined by dirt or debris that may be present in a shipping case. Please be confident your iPad is secure and do not install if you are not sure the iPad will remain secure during operation and camera movement.



- 4) Once secure... and the WING is off of the Mark II... then you may attach your iPad to the EyeDirect.

- 5) Attach iPad accessory securely.



Rubber Donut

The RUBBER DONUT is used to put over the barrel of the camera lens.... and 'matte' the light that is seen by the subject between the barrel of the taking lens and the EyeDirect lens port. Just like with an Autocue/teleprompter, you want to provide a 'black field' behind the beam splitter for your subject to look into.



- 1) Here you can see the light 'leaking' around the lens barrel which may be distracting to the subject.

- a. *Unlike the use of a donut in a matte box system, the fear is not light from behind the camera hitting the 'filter' as much as it is a courtesy to the subject to have an unobstructed 'reflection' of the interviewer.*



Interviewer Light

It is important to provide a bright ambient environment or a light for the interviewer. Subject will need the supplemental lighting to help 'cut through' the lighting that is on them.

