



BUNDLECHEK

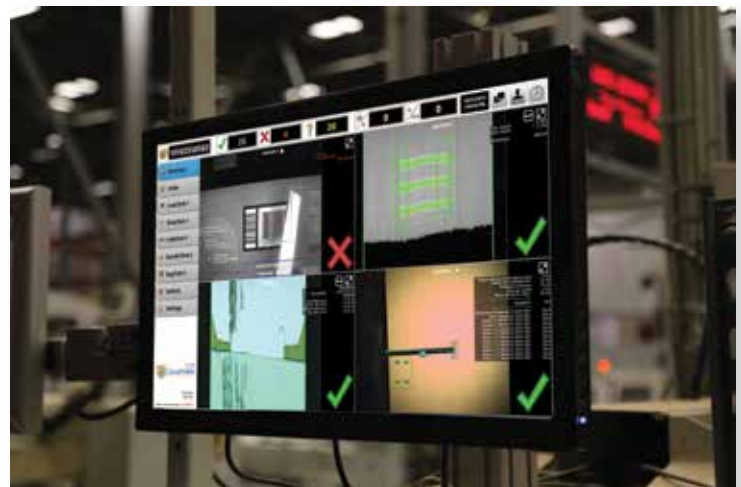
How it Works

BundleChek ejects any bundle in which a defective box is found by any ClearVision camera, including GapChek. BundleChek uses a camera to detect a spray mark made on the bottom of the bundle. This spray mark is only placed on the bundle if it contains defective boxes identified by ClearVision cameras such as GlueChek, FoldChek, CodeChek, ScoreChek, etc. BundleChek will also eject bundles in which GapChek has identified gap problems. Once the Bundle has been ejected from the conveyor, an operator can locate the individual defective box that has been marked on its side.



Benefits

With the BundleChek™, manufacturers and customers alike can be sure that defective boxes are eliminated from the shipment. Without BundleChek, you are relying on operators manually removing bundles to identify defects. BundleChek automates that process which eliminates the risk of defects in the production stream, reduces time taken to find defects and provides accountability to the quality organization.



For more information, visit valcomelton.com or contact your local Valco Melton representative.
World Headquarters: Cincinnati, OH, USA (Corporate Offices) • Tel:+1.513.874.6550 • info@valcomelton.com
Europe Headquarters: Orkoien, Spain • Tel:+34.948.321.580
Asia Headquarters: Xiamen, Fujian, China • Tel:+86.592.591.7854